



ENVIRONMENTAL
HEALTH
PERSPECTIVES

ehponline.org

Placental Mitochondrial DNA Content and Particulate
Air Pollution During in Utero Life

**Bram G. Janssen, Elke Munters, Nicky Pieters, Karen Smeets,
Bianca Cox, Ann Cuypers, Frans Fierens, Joris Penders,
Jaco Vangronsveld, Wilfried Gyselaers, Tim S. Nawrot**

<http://dx.doi.org/10.1289/ehp.1104458>

Online 24 May 2012



NIEHS
National Institute of
Environmental Health Sciences

National Institutes of Health
U.S. Department of Health and Human Services

Placental Mitochondrial DNA Content and Particulate Air Pollution During *in Utero* Life

Bram G. Janssen¹, Elke Munters¹, Nicky Pieters¹, Karen Smeets¹, Bianca Cox¹, Ann Cuypers¹, Frans Fierens², Joris Penders³, Jaco Vangronsveld¹, Wilfried Gyselaers⁴, Tim S. Nawrot^{1,5}

¹ Centre for Environmental Sciences, Hasselt University, Diepenbeek, Belgium;

² Belgian Interregional Environment Agency, Brussels, Belgium;

³ Biomedical Research Institute, Hasselt University, Diepenbeek, Belgium;

⁴ Department of Obstetrics, East-Limburg Hospital, Genk, Belgium;

⁵ Department of Public Health, Occupational and Environmental Medicine, Leuven University (KULeuven), Leuven, Belgium.

Address correspondence to dr. T.S. Nawrot, Centre for Environmental Sciences, Hasselt University, Agoralaan gebouw D, 3590 Diepenbeek, Belgium. Telephone: 32-11-268382. Fax: 32-11-268299. E-mail: tim.nawrot@uhasselt.be

Running title: Mitochondrial DNA-content and air pollution *in utero*

KEY WORDS: fetal development, mitochondrial DNA-content, mitochondrial function, particulate matter.

Acknowledgment: This work was supported by grants from the Flemish Scientific Fund (FWO, G.0.873.11.N.10/1516112N), BOF and tUL-impulse financing (Transnational University Limburg, Hasselt-Maastricht Impuls Financing).

The authors declare they have no competing financial interests.

Abbreviations

<i>ACTB</i>	Beta Actin
<i>HBB</i>	Hemoglobin beta
mtDNA	Mitochondrial DNA
<i>MTF3212/R3319</i>	Mitochondrial forward primer from nucleotide 3212 and reverse primer from nucleotide 3319
<i>MT-ND1</i>	Mitochondrial encoded NADH dehydrogenase 1
nDNA	Nuclear DNA
PM	Particulate matter
PM ₁₀	Particles with a diameter smaller than 10 µm
qPCR	Quantitative polymerase chain reaction
ROS	Reactive oxygen species
<i>RPLP0</i>	Acidic ribosomal phosphoprotein P0

ABSTRACT

BACKGROUND: Studies emphasize the importance of particulate matter (PM) in the formation of reactive oxygen species and inflammation. We hypothesized that these processes can influence mitochondrial function of the placenta and fetus.

OBJECTIVES: We investigated the influence of PM₁₀ exposure during pregnancy on the mitochondrial DNA-content (mtDNA content) of the placenta and umbilical cord blood.

METHODS: DNA was extracted from placental tissue ($n = 174$) and umbilical cord leukocytes ($n = 176$). Relative mtDNA copy numbers (i.e. mtDNA content) were determined by real-time PCR. Multiple regression models were used to link mtDNA content and *in utero* exposure to PM₁₀ over various time windows during pregnancy.

RESULTS: In multivariate-adjusted analysis, a 10- $\mu\text{g}/\text{m}^3$ increase in PM₁₀ exposure during the last month of pregnancy was associated with a 16.1% decrease (95% CI: -25.2, -6.0%, $p = 0.003$) in placental mtDNA content. The corresponding effect-size for average PM₁₀ exposure during the third trimester was 17.4% (95% CI: -31.8, -0.1%, $p = 0.05$). Furthermore, we found that each doubling in residential distance to major roads was associated with an increase in placental mtDNA content of 4.0% (95% CI: 0.4, 7.8%, $p = 0.03$). No association was found between cord blood mtDNA content and PM₁₀ exposure.

CONCLUSIONS: Prenatal PM₁₀ exposure was associated with placental mitochondrial alterations, which may both reflect and intensify oxidative stress production. The potential health consequences of decreased placental mtDNA content in early life must be further elucidated.

Introduction

Particulate matter (PM) is a part of ambient air pollution and is most relevant to human health (Brunekreef and Holgate 2002; Nawrot et al. 2011). PM has been associated with adverse health outcomes of the fetus (Ballester et al. 2010; Dejmek et al. 1999; Gemma et al. 2006; Glinianaia et al. 2004; Kannan et al. 2006; Morello-Frosch et al. 2010) and neonate (Scheers et al. 2011). In addition, the functional morphology of the placenta is also influenced by PM exposure in experimental animal models (Veras et al. 2008). The underlying mechanisms by which PM exposure may induce adverse fetal health effects are poorly understood. Several studies have emphasized the importance of PM and its associated metal components in the formation of reactive oxygen species (ROS) (Chahine et al. 2007; Li et al. 1996) and inflammation (Salvi et al. 1999).

The placenta is a metabolically active organ that plays a role in nutrient transfer, growth, and organ development. Mitochondria play an important role in the regulation of these processes. These intracellular organelles are essential for cellular energy provision through the production of ATP via oxidative phosphorylation. Each cell contains approximately 200 to 2000 mitochondria, each carrying 2-10 copies of mitochondrial DNA (mtDNA) that are bound to protein structures. The major difference between human nuclear DNA (nDNA) and mtDNA is that the latter lacks protective histones, chromatin structure, and introns. Additionally, the mitochondrial DNA repair mechanisms work less efficiently than that of nDNA (Lee and Wei 2000). Mitochondria are the major intracellular sources and primary targets of ROS and, therefore, mtDNA is particularly vulnerable to ROS-induced damage and has a high mutation rate (Linnane et al. 1989). Mitochondria compensate for these mutations, resulting in a change in mtDNA copy number (i.e. change in mtDNA content). Recently, mitochondrial function has been linked to various disease mechanisms and can be assessed

by measuring the mtDNA content, an established marker of mitochondrial damage and dysfunction (Hou et al. 2010; Sahin et al. 2011).

Developmental adaptations due to metabolic changes, including suboptimal fetal nutrition, permanently “program” the fetus and may lead to adverse pregnancy outcomes that form the origin of diseases that may arise in adult life (Barker et al. 1991; Geelhoed and Jaddoe 2010; Made et al. 2006). Mitochondrial damage and dysfunction attributes to metabolic shifts and may represent a biological effect along the pathway linking PM to effects on the newborn. However, whether placental and cord blood mtDNA content is associated with PM₁₀ exposure during *in utero* life has never been studied. In the present study we investigated the association of placental and cord blood mtDNA content with long- and short-term exposure to airborne PM₁₀ and residential distance to major roads.

Material and Methods

Study population and data collection

AGEing is a complex phenotype responsive to a plethora of ENVIRONMENTAL exposures from early life onwards including particulate air pollution. The current study is part of a new initiated and ongoing birth cohort “ENVIRONAGE”. We recruited 178 newborns (only singletons) from South-East-Limburg Hospital (ZOL) in Genk born between Friday 12 PM and Monday 7 AM from the 5th of February 2010 until the 3rd of April 2011. The only inclusion criterion was that mothers had to be able to fill out questionnaires in Dutch. Enrollment was equally spread over all seasons of the year. The overall participation rate of eligible mothers was 47%. During the first month of the campaign midwives recorded the reason of non-participation. The main reasons (in descending importance) were: forgotten to ask for participation, communication problems, or complications during labor. Participating mothers provided written informed consent when they arrived at the hospital for delivery, and

completed study questionnaires in the postnatal ward after delivery to provide detailed information on age, socioeconomic status, ethnicity, smoking, place of residence, pre-gestational body mass index (BMI) and parity. Socioeconomic status was coded and condensed into a scale with scores ranging from 0 to 2 based on mother's education. Ethnicity was classified based on the native country of the newborn's grandparents as European (when two or more grandparents were European) or non-European (when at least three grandparents were of non-European origin). Current smokers were defined as having smoked before and during pregnancy. Before-smokers were defined as those who had quit prior to pregnancy, and never-smokers had never smoked.

Samples of placental tissue ($n = 174$) and umbilical cord blood ($n = 176$) were collected immediately after delivery, along with other perinatal parameters such as newborn's sex, birth date, birth weight and length, gestational age (range, 35-42 weeks), Apgar score, and ultrasonographic data. All neonates were assessed for congenital anomalies immediately after birth and all were considered healthy. The Apgar score after 1 min ranged from 2 to 10 but improved up to values between 7 and 10 after 5 min for all participants. Birth date was condensed into a seasonal scale where a difference was made between cold periods (October to March) and warm periods (April to September).

The study was conducted according to the principles outlined in the Helsinki declaration for investigation of human subjects. Written informed consent was provided by all study participants in accordance with procedures approved by the Ethical Committee of Hasselt University and South-East-Limburg Hospital.

Sample collection

Umbilical cord blood was collected immediately after delivery in Vacutainer® Plus Plastic K₂EDTA Tubes (BD, Franklin Lakes, NJ, USA). Blood cell counts (including platelet counts) and differential leukocyte counts were determined using an automated cell counter

with flow differential (Cell Dyn 3500, Abbott Diagnostics, Abott Park, IL USA). Samples were centrifuged at 3200 rpm for 15 minutes to retrieve buffy coats and instantly frozen, first at -20°C and afterwards at -80°C.

Placentas were obtained for 174 mothers in the delivery room and deep-frozen within 10 minutes. Afterwards, placentas were thawed to take tissue samples for DNA extraction following a standardized protocol as described in Adibi et al. (2009). Briefly, villous tissue, protected by the chorio-amniotic membrane, was biopsied from the fetal side of the placenta and preserved at -80°C. We assessed within placenta variability in a random subset of 6 placentas by comparing biopsies taken at four standardized sites across the middle region of the placenta, approximately 4 cm away from the umbilical cord. The first biopsy was taken to the right of the main artery and three other biopsies in the remaining quadrants of the placenta. mtDNA content within each placenta varied by a mean of 19.3% across the quadrants. To minimize the impact of within placental variability, biopsies used for mtDNA content assays were all taken 1-1.5 cm below the chorio-amniotic membrane at a fixed location by using a device to orientate the fetal side of the placenta in relation to the umbilical cord. Care was taken by visual examination and dissection to avoid the chorio-amniotic membrane contamination. Each biopsy was approximately 1 to 2 cubic centimeters. Histological confirmation of cell type in 10 placentas showed consistent results in all studied samples.

Exposure measurement

We calculated the regional background levels of PM₁₀ for each mother's home address using a kriging interpolation method (Jacobs et al. 2010; Janssen et al. 2008) that uses land cover data obtained from satellite images (Corine land cover data set; European Environment Agency 2000). This model provides interpolated PM₁₀ values from the Belgian telemetric air quality networks in 4 × 4 km grids. In order to explore potentially critical exposures during

pregnancy, individual PM₁₀ concentrations ($\mu\text{g}/\text{m}^3$) were calculated for various periods: 0-7 days before delivery (Lag 0-7), the last month of pregnancy, and for each of the three trimesters of pregnancy, with trimesters being defined as: 1-13 weeks (trimester 1), 14-28 weeks (trimester 2) and 29 weeks to delivery (trimester 3). Also, the whole pregnancy exposure was calculated as the mean of three trimesters. The date of conception was estimated based on ultrasound data. Additionally, NO₂ exposure was interpolated using the same methods as PM₁₀ exposure and is used in a sensitivity analysis. Distances from the mother's residence to a major road were calculated through geocoding (the shortest distance being set at 10 meters). A major road was defined as an N-road (major local traffic road with average total number of motor vehicles per 24h > 10000) or an E-road (motorway/highway).

The Royal Meteorological Institute (Brussels, Belgium) provided mean daily temperatures and relative humidity for the study region and are averaged using the same exposure windows as for PM₁₀. The temperature and relative humidity averaged 10.1 ± 1.4 °C and $80.9 \pm 10.1\%$, respectively. Apparent temperature (8.4 ± 1.6 °C) was calculated by using the following formula (Kalkstein and Valimont 1986; Steadman 1979): $-2.653 + (0.994 \times Ta) + (0.0153 \times Td^2)$, where Ta is air temperature and Td is dew-point temperature (in °C).

Measurement of mtDNA content

DNA was extracted from white blood cells of the buffy coat and placental tissue cells using the MagMAX™ DNA Multi-Sample kit (Applied biosystems, Foster City, CA, USA) following the manufacturer's instructions. Briefly, this purification kit uses MagMAX™ magnetic bead-based nucleic acid isolation technology for producing high quantities of purified DNA. RNA contamination was minimized with a RNase digestion step. The concentration of extracted DNA was measured at 260 nm with the Nanodrop spectrophotometer (ND-1000, Isogen Life Science, De Meern, NE). Both DNA yield (ng/ μl)

and purity ratios (A260/280 and A260/230) were determined. Extracted DNA was stored at -20°C until further use.

mtDNA content was measured in placental tissue and leukocytes of umbilical cord blood by determining the ratio of two mitochondrial gene copy numbers (*MTF3212/R3319* and *MT-ND1*) to three single-copy nuclear control genes (*RPLP0*, *ACTB* and *HBB*) using a quantitative real-time polymerase chain reaction (qPCR) assay. Extracted genomic DNA was diluted to a final concentration of 5 ng/μl in RNase free water, prior to the qPCR runs. PCR reactions were set up by aliquoting 7.5 μl master mix into each well of a MicroAmp® Fast Optical 96-Well Reaction Plate compatible with the 7900HT Fast Real-Time PCR System (Applied Biosystems, Foster City, CA, USA), followed by 2.5 μl of each experimental DNA sample, for a final volume of 10 μl per reaction. The master mix consisted of Fast SYBR® Green I dye 2x (Applied Biosystems, Lennik, 5 μl/reaction), forward (0.3 μl/reaction) and reverse (0.3 μl/reaction) primer and RNase free water (1.9 μl/reaction). Primer sequences (Table 1) were diluted to a final concentration of 300 nM in the master mix. Two non-template controls and six inter-run calibrators were carried along in each PCR plate. The thermal cycling profile was the same for all transcripts: 20 s at 95°C for activation of the AmpliTaq Gold® DNA-polymerase, followed by 40 cycles of 1 s at 95°C for denaturation and 20 s at 60°C for annealing/extension. Amplification specificity and absence of primer dimers was confirmed by melting curve analysis at the end of each run (15 s at 95 °C, 15 s at 60 °C, 15 s at 95 °C). After thermal cycling, raw data were collected and processed. C_T-values of the two mitochondrial genes were normalized relative to the three nuclear reference genes according to the qBase software (Biogazelle, Zwijnaarde, BE). The program uses modified software from the classic comparative C_T method ($\Delta\Delta C_T$) that takes multiple reference genes into account and uses inter-run calibration algorithms to correct for run-to-run differences (Hellemans et al. 2007). Plate effects were minimized by measuring

one gene for all 178 placenta or cord blood samples in one day. The coefficient of variation for the mtDNA content in inter-run samples was 4.2%.

Statistical analysis

We used SAS software (version 9.2; SAS Institute Inc., Cary, NC, USA) for database management and statistical analysis. Continuous data were checked for normality and are presented as arithmetic means \pm SD or geometric means with interquartile range (IQR) when data was not normally distributed. Categorical data are presented as frequencies (%) and numbers. Pearson or Spearman correlation coefficients and linear regression were used to assess the relationship of mtDNA content from placental tissue or umbilical cord blood with PM₁₀ exposure. Multiple linear regression was performed to determine the independent variables of mtDNA content. Covariates considered for entry in the model ($p \leq 0.10$) were newborn's sex, maternal age, pre-gestational BMI, net weight gain, socioeconomic status, ethnicity, smoking status, parity, gestational age, season and time-specific apparent temperature. Newborn's sex, maternal age, smoking status, gestational age and ethnicity were forced into the model regardless of the p -value. In addition, umbilical cord models were adjusted for white blood cell count, percentage of neutrophils, and platelet counts to account for cord blood cell distribution. Q-Q plots of the residuals were used to test the assumptions of all linear models.

Results

Characteristics of the study population

Table 2 summarizes the characteristics of the 178 mother-newborn pairs. Maternal age averaged 29.1 years and ranged from 18 to 42 years. The mothers had a mean pre-gestational BMI of 24.3 ± 4.8 kg/m². 15.7% of the mothers ($n = 28$) smoked during pregnancy, and 29.2% ($n = 52$) had ever smoked. The average pack-years for mothers who ever smoked was

6.1 ± 5.1. The majority were working mothers (87.7%), who lived on average 15.5 km (IQR = 5-20 km) from their working places. The study population included 82 male and 96 female newborns and 87.6% ($n = 149$) were classified as Europeans. Seven infants were born preterm (less than 37 weeks). Birth weight averaged 3403 ± 386.7 g. We determined the mtDNA content in cells from placental tissue and cord blood of 174 and 176 subjects respectively.

PM₁₀ exposure during the seven days before delivery averaged 24.9 ± 11.1 µg/m³, and 25.6 ± 8.6 µg/m³ for the last month of pregnancy (Table 3). Average trimester-specific PM₁₀ exposure was 21.5 ± 5.1 µg/m³ for the first trimester, 22.3 ± 4.3 µg/m³ for the second trimester and 24.4 ± 5.7 µg/m³ for the third trimester. The average distance from the participant's home address to the nearest major road was 207 m (85-676 m).

Predictors of mtDNA content

Placental mtDNA content was negatively associated with parity ($\beta = -0.064 \pm 0.027$, $p = 0.018$), also after adjusting for maternal age ($\beta = -0.063 \pm 0.029$, $p = 0.028$), negatively associated with cold season ($\beta = -0.243 \pm 0.040$, $p < 0.0001$) and positively associated with apparent temperature the week before delivery ($\beta = 0.018 \pm 0.003$, $p < 0.0001$). Birth weight adjusted for newborn's sex, gestational age, season and apparent temperature during third trimester was not significantly associated with placental mtDNA content ($p = 0.71$) nor with PM₁₀ exposure during the third trimester ($p = 0.33$).

mtDNA content in association with in utero PM₁₀ exposure

Unadjusted analysis showed that placental mtDNA content was correlated with PM₁₀ exposure during the whole pregnancy ($\beta = -0.01 \pm 0.006$, $p = 0.068$), but this was largely attributable to exposure during the last week, last month and third trimester of pregnancy (all $p < 0.0001$, Figure 1A-C). PM₁₀ exposures during the first and second trimester of pregnancy were not significantly ($p > 0.31$) associated with placental mtDNA content. We adjusted for

relevant variables that may influence the mtDNA content outcome ($p \leq 0.10$). Although newborn's sex, maternal age, smoking status, gestational age and ethnicity were not significantly associated with placental mtDNA content, we forced these variables into the regression model, together with parity, season and time-specific apparent temperature. After adjustment for the aforementioned variables, placental mtDNA content remained negatively associated with PM_{10} exposure during the last week, last month and third trimester of pregnancy (Figure 1D). Each $10 \mu\text{g}/\text{m}^3$ increase in PM_{10} was associated with a lower placental mtDNA content of 10.1% (95% CI: -17.6, -1.9, $p = 0.02$) when considering the average exposure during the last week of pregnancy, 16.1% (95% CI: -25.2, -6.0, $p = 0.003$) during the last month of pregnancy and 17.4% (95% CI: -31.8, -0.1, $p = 0.05$) during the third trimester (Table 4). Placental mtDNA content at birth did not correlate with PM_{10} exposure during first and second trimester.

In contrast to placental mtDNA content, none of these pollution windows were significantly associated with cord blood mtDNA content, either before or after adjusting for potential confounders as in the previous models and in addition including platelet counts, neutrophils and total number of white blood cells (Table 4, Figure 1D). Although we adjusted for cord blood cell distribution, mtDNA content was not significantly associated with cord blood platelets ($p = 0.97$), neutrophils ($p = 0.47$), white blood cells ($p = 0.18$) or the white blood cell/platelet ratio ($p = 0.15$).

Markers of traffic-related air pollution

Distance to a major road is an exposure marker that can be used as a surrogate for traffic-related air pollution (Hoek et al. 2002). Adjusted estimates showed that distance to major roads was significantly associated with placental mtDNA content, with a 4% increase in mtDNA content with each doubling of the distance (95% CI: 0.4, 7.8) (Table 4). No association was observed between cord blood mtDNA content and distance to major roads.

Sensitivity analysis

Excluding women with preeclampsia ($n = 1$) or other pregnancy complications ($n = 2$) did not alter the reported changes between PM_{10} exposure and mtDNA content of placental tissue or cord blood. The expression of the nuclear genes, used as internal controls to quantify mtDNA content in pPCR assays, was not significantly associated with PM_{10} exposure during the various time windows ($p > 0.28$). Models in which we replaced PM_{10} exposure with NO_2 exposure (Supplemental Material, Table 1 and 2) showed significant negative associations with placental mtDNA content for a $10 \mu\text{g}/\text{m}^3$ increase in NO_2 during the last month (-14.1%, 95% CI: -26.5, -0.3; $p = 0.05$) and third trimester (-21.8%, 95% CI: -32.1, -9.8, $p = 0.0009$) of pregnancy. The other time periods were not significantly associated, and no significant associations between NO_2 and cord blood mtDNA content during any time period were observed.

Discussion

The placenta plays a pivotal role in nutrient transfer, growth and organ development and these processes are regulated by mitochondria. Placental mitochondria also play an important role in the proper formation and functioning of the placenta, and therefore, are essential for fetal health. Urban PM has adverse effects on the functional morphology of the placenta in experimental animal models (Veras et al. 2008) and has been associated with adverse health outcomes of the fetus (Ballester et al. 2010; Dejmek et al. 1999; Gemma et al. 2006; Glinianaia et al. 2004; Kannan et al. 2006; Morello-Frosch et al. 2010), but the molecular changes have barely been studied. The key finding of our study is that placental mtDNA content, a molecular marker of mitochondrial damage and mitochondrial inflammation, is associated with *in utero* exposure to PM_{10} , especially during the last period of pregnancy. We also assessed the association between proximity of the mother's home to major roads, as a

surrogate of traffic-related air pollution and the placental mtDNA content. The placental mtDNA content was positively associated with an increase in residential distance to major roads. These associations persisted with adjustment for newborn's sex, maternal age, smoking status, gestational age, ethnicity, parity, season and time-specific apparent temperature or any other covariate studied. In contrast to placental mtDNA content, none of these average pollution levels correlated with mtDNA content from cord blood.

Our observation that exposure to PM₁₀ and traffic-related air pollutants during pregnancy appears to modulate mtDNA replication in a negative manner is consistent with two studies on the effect of smoking. A decrease in the mtDNA content in the lung of smokers has been observed, which was attributed to the oxidative stress induced by smoking (Lee et al. 1998). Moreover, Bouhours-Nouet et al. (2005), showed that maternal smoking is associated with mtDNA depletion of placental tissue from newborns. In our study, we did not confirm a significant association between smoking during pregnancy and a lower mtDNA content ($p = 0.40$) in the whole study population, possibly due to the low prevalence of maternal smoking (15.7%).

The biological mechanisms by which air pollution may affect fetal health outcomes are poorly understood but the formation of ROS and inflammation due to PM is thought to be of importance. In addition to ROS formed as a by-product of mitochondrial respiration (Li et al. 2003), ROS may also be present in mitochondria of placental tissue in response to maternal smoking (Bouhours-Nouet et al. 2005). However, ROS are not only formed in placental mitochondria but also in mitochondria of endothelial cells, lining the inside of maternal and fetal capillary surface areas of the placenta. It has been shown that PM exposure, particularly to pro-oxidative combustion particles, influences endothelial function (Li et al. 2006; Peretz et al. 2008). The observation that smoke exposure during pregnancy causes a direct increase in the vascular resistance of the placenta from the fetal side (Geelhoed et al. 2011; Larsen et

al. 2002) suggests that PM exposure may lead to an increased resistance of umbilical-placental circulation which may impair oxygen and nutrient exchange across placenta. Mitochondria respond to energy deficiency by synthesizing more copies of their mtDNA and increase their abundance (Hou et al. 2010). However, mtDNA is particularly vulnerable to ROS-induced damage and has a high mutation rate (Linnane et al. 1989). mtDNA replication can be a compensatory mechanism in response to inefficient mitochondrial function due to mutations, resulting in a vicious circle of more ROS formation from defective cells (Andreu et al. 2009). In time, the bio-energetic and replicative functions of defective mitochondria decline resulting in further depletion of mtDNA content and loss of mitochondrial function (Wong et al. 2009).

Pollutants may interfere differently with placental development during different gestational periods. During the first trimester and late pregnancy, the placenta expresses several cytochrome P450 enzymes, although only a few of them are active, indicating that metabolism of PM may be reduced (Myllynen et al. 2005). Mutations in placental mtDNA may occur in early pregnancy, leading to an onset of mitochondrial dysfunction in later trimesters. The strongest association we observed between placental mtDNA content and different PM₁₀ exposure windows during pregnancy was for the last period of pregnancy, suggesting that this might be a potential window for susceptibility to PM₁₀ exposure. Indeed, first and third trimester air pollution exposures have been implicated as having the most relevance for low birth weight and preterm birth (Gehring et al. 2011). The study of Morello-Frosch et al. (2010) revealed a decrease in birth weight of 7.7 g for each 10 µg/m³ increase in PM₁₀ in the third trimester, although the international collaboration on air pollution and pregnancy outcomes reported heterogeneity in estimated effects of air pollution on birth weight among different locations (Parker et al. 2011). We found neither a significant

association between birth weight and PM₁₀ exposure nor an association between birth weight and placental and cord blood mtDNA content.

Mitochondrial dysfunction can be caused by a change in mtDNA content and may be related to the development of multiple forms of disease. Decreased mtDNA content of white blood cells has been shown in diabetes type II (Choi et al. 2001; Gianotti et al. 2008; Wong et al. 2009), breast cancer (Xia et al. 2009; Yu et al. 2007) and low birth weight (Gemma et al. 2006). Alternatively, low-dose benzene exposure in various occupational groups and PM exposure in steel workers was associated with damaged mitochondria, as exemplified by increased mtDNA copy numbers in whole blood and white blood cells, respectively (Carugno et al. 2012; Hou et al. 2010). In contrast to these observations, our results are consistent with an earlier report (Bouhours-Nouet et al. 2005) on maternal smoking (a personalised form of air pollution) and a lower mtDNA content. We must bear in mind that mtDNA content fluctuates during aging, under the influence of different environmental factors, and the tissue investigated (Andreu et al. 2009; Clay Montier et al. 2009). Experimental evidence shows that short telomeres trigger a decline in mitochondrial mass that induces additional telomere shortening (Sahin et al. 2011).

The fact that we observed associations with mtDNA content in placental tissue but not in umbilical cord blood demands consideration. First, umbilical cord blood has a separate circulation that may not be representative of other tissues. For example, Gemma et al. (2006) postulated that umbilical cord blood is not representative for fetal tissue. Also, they found no association between maternal leukocyte mtDNA content and umbilical cord mtDNA content, indicating that leukocyte mtDNA of cord blood may not be a good indicator of mtDNA in maternal tissue or that other *in utero* factors influence mtDNA content of cord blood. Some authors attributed variation in mtDNA in human blood cells due to variation in platelets (Banas et al. 2004; Cossarizza et al. 2003). Platelet contamination increases mtDNA without

contributing to nDNA and affects the mtDNA content. However, we adjusted our models of cord blood mtDNA content for blood cell count (including platelet count). A second consideration is that the movement of pollutants into the fetal compartments can be blocked or facilitated by placental transporters (Adibi et al. 2010; Veras et al. 2008). Pollutants that do not traverse the placenta will not contribute to effects in the cord blood but may impact placental cells, including effects on active nutrient transfer and vascular development that may adversely affect fetal development. Complex vascular alterations are considered to be the main cause of placental abnormalities in the second and third trimester and PM-induced effects may comprise a mechanism by which these alterations occur (Jalaludin et al. 2007). Finally, differences in turnover rates of mtDNA between tissues have been documented (Collins et al. 2003; Gross et al. 1969) which might also contribute to different effects on cord blood and placental tissue.

Morphological changes in placental structure and vasculature occur throughout whole pregnancy (Myllynen et al. 2005). Peroxisome proliferator activated receptor protein gamma (PPAR γ), a nuclear transcription factor, and its transcriptional coactivator PPAR γ -coactivator alpha (PGC-1 α) are essential in basic placental development and function through the regulation of genes involved in trophoblast differentiation, angiogenesis, fatty acid transport and inflammation (Adibi et al. 2009). In addition, PGC-1 α also controls other nuclear receptors and transcription factors that are essential in mitochondrial biogenesis and energy metabolism (Wenz 2011). We postulate that PM-induced oxidative stress may have effects on the expression of PPAR γ and PGC-1 α , resulting in changes in expression of PPAR γ -dependent genes and genes controlling mitochondrial biogenesis and mtDNA content of placental mitochondria.

Several limitations of the present study warrant consideration. Although our results were consistent after multiple adjustments, we cannot exclude the possibility of residual

confounding by some unknown factor that is associated with both mitochondrial function and ambient air pollution. Ambient exposure does not account for indoor exposure, but we obtained information on environmental tobacco smoke. mtDNA content showed considerable variation within placenta (19.3%), therefore we took biopsies at a fixed location to minimize variation of placental mtDNA content attributed to differences across placental regions.

Conclusion

In conclusion, *in utero* PM₁₀ exposure during the last period of pregnancy was associated with mitochondrial damage as exemplified by placental mtDNA content. This might suggest a potential window for susceptibility to PM₁₀ exposure. The potential health consequences of decreased mtDNA content in early life must be further elucidated.

References

- Adibi JJ, Hauser R, Williams PL, Whyatt RM, Thaker HM, Nelson H, et al. 2009. Placental biomarkers of phthalate effects on mRNA transcription: application in epidemiologic research. *Environ Health* 8:20.
- Adibi JJ, Whyatt RM, Hauser R, Bhat HK, Davis BJ, Calafat AM, et al. 2010. Transcriptional biomarkers of steroidogenesis and trophoblast differentiation in the placenta in relation to prenatal phthalate exposure. *Environ Health Perspect* 118:291-296.
- Andreu AL, Martinez R, Marti R and Garcia-Arumi E. 2009. Quantification of mitochondrial DNA copy number: pre-analytical factors. *Mitochondrion* 9:242-246.
- Ballester F, Estarlich M, Iniguez C, Llop S, Ramon R, Esplugues A, et al. 2010. Air pollution exposure during pregnancy and reduced birth size: a prospective birth cohort study in Valencia, Spain. *Environ Health* 9:6.
- Banas B, Kost BP and Goebel FD. 2004. Platelets, a typical source of error in real-time PCR quantification of mitochondrial DNA content in human peripheral blood cells. *Eur J Med Res* 9:371-377.
- Barker DJ, Godfrey KM, Fall C, Osmond C, Winter PD and Shaheen SO. 1991. Relation of birth weight and childhood respiratory infection to adult lung function and death from chronic obstructive airways disease. *BMJ* 303:671-675.
- Bouhours-Nouet N, May-Panloup P, Coutant R, de Casson FB, Descamps P, Douay O, et al. 2005. Maternal smoking is associated with mitochondrial DNA depletion and respiratory chain complex III deficiency in placenta. *Am J Physiol Endocrinol Metab* 288:E171-177.
- Brunekreef B and Holgate ST. 2002. Air pollution and health. *Lancet* 360:1233-1242.
- Carugno M, Pesatori AC, Dioni L, Hoxha M, Bollati V, Albetti B, et al. 2012. Increased Mitochondrial DNA Copy Number in Occupations Associated with Low-Dose Benzene Exposure. *Environ Health Perspect* 120.
- Chahine T, Baccarelli A, Litonjua A, Wright RO, Suh H, Gold DR, et al. 2007. Particulate air pollution, oxidative stress genes, and heart rate variability in an elderly cohort. *Environ Health Perspect* 115:1617-1622.
- Choi YS, Kim S and Pak YK. 2001. Mitochondrial transcription factor A (mtTFA) and diabetes. *Diabetes Research and Clinical Practice* 54:S3-S9.
- Clay Montier LL, Deng JJ and Bai Y. 2009. Number matters: control of mammalian mitochondrial DNA copy number. *Journal of Genetics and Genomics* 36:125-131.

- Collins ML, Eng S, Hoh R and Hellerstein MK. 2003. Measurement of mitochondrial DNA synthesis in vivo using a stable isotope-mass spectrometric technique. *Journal of Applied Physiology* 94:2203-2211.
- Cossarizza A, Riva A, Pinti M, Ammannato S, Fedeli P, Mussini C, et al. 2003. Increased mitochondrial DNA content in peripheral blood lymphocytes from HIV-infected patients with lipodystrophy. *Antivir Ther* 8:315-321.
- Dejmek J, Selevan SG, Benes I, Solansky I and Sram RJ. 1999. Fetal growth and maternal exposure to particulate matter during pregnancy. *Environ Health Perspect* 107:475-480.
- Geelhoed JJ, El Marroun H, Verburg BO, van Osch-Gevers L, Hofman A, Huizink AC, et al. 2011. Maternal smoking during pregnancy, fetal arterial resistance adaptations and cardiovascular function in childhood. *BJOG* 118:755-762.
- Geelhoed JJ and Jaddoe VW. 2010. Early influences on cardiovascular and renal development. *Eur J Epidemiol* 25:677-692.
- Gehring U, Wijga AH, Fischer P, de Jongste JC, Kerkhof M, Koppelman GH, et al. 2011. Traffic-related air pollution, preterm birth and term birth weight in the PIAMA birth cohort study. *Environ Res* 111:125-135.
- Gemma C, Sookoian S, Alvarinas J, Garcia SI, Quintana L, Kanevsky D, et al. 2006. Mitochondrial DNA Depletion in Small- and Large-for-Gestational-Age Newborns. *Obesity* 14:2193-2199.
- Gianotti TF, Sookoian S, Dieuzeide G, Garcia SI, Gemma C, Gonzalez CD, et al. 2008. A decreased mitochondrial DNA content is related to insulin resistance in adolescents. *Obesity* 16:1591-1595.
- Glinianaia SV, Rankin J, Bell R, Pless-Mulloli T and Howel D. 2004. Particulate air pollution and fetal health: a systematic review of the epidemiologic evidence. *Epidemiology* 15:36-45.
- Gross NJ, Getz GS and Rabinowitz M. 1969. Apparent Turnover of Mitochondrial Deoxyribonucleic Acid and Mitochondrial Phospholipids in the Tissues of the Rat. *Journal of Biological Chemistry* 244:1552-1562.
- Hellems J, Mortier G, De Paepe A, Speleman F and Vandesompele J. 2007. qBase relative quantification framework and software for management and automated analysis of real-time quantitative PCR data. *Genome Biol* 8:R19.

- Hoek G, Brunekreef B, Goldbohm S, Fischer P and van den Brandt PA. 2002. Association between mortality and indicators of traffic-related air pollution in the Netherlands: a cohort study. *Lancet* 360:1203-1209.
- Hou L, Zhu Z-Z, Zhang X, Nordio F, Bonzini M, Schwartz J, et al. 2010. Airborne particulate matter and mitochondrial damage: a cross-sectional study. *Environmental Health* 9:48.
- Jacobs L, Emmerechts J, Mathieu C, Hoylaerts MF, Fierens F, Hoet PH, et al. 2010. Air pollution related prothrombotic changes in persons with diabetes. *Environ Health Perspect* 118:191-196.
- Jalaludin B, Mannes T, Morgan G, Lincoln D, Sheppard V and Corbett S. 2007. Impact of ambient air pollution on gestational age is modified by season in Sydney, Australia. *Environmental Health* 6:16.
- Janssen S, Dumont G, Fierens F and Mensink C. 2008. Spatial interpolation of air pollution measurements using CORINE land cover data. *Atmospheric Environment* 42:4884-4903.
- Kalkstein LS and Valimont KM. 1986. An evaluation of summer discomfort in the United States using a relative climatological index. *Bulletin of the American Meteorological Society* 7:842-848.
- Kannan S, Misra DP, Dvonch JT and Krishnakumar A. 2006. Exposures to airborne particulate matter and adverse perinatal outcomes: a biologically plausible mechanistic framework for exploring potential effect modification by nutrition. *Environ Health Perspect* 114:1636-1642.
- Larsen LG, Clausen HV and Jonsson L. 2002. Stereologic examination of placentas from mothers who smoke during pregnancy. *Am J Obstet Gynecol* 186:531-537.
- Lee HC, Lu CY, Fahn HJ and Wei YH. 1998. Aging- and smoking-associated alteration in the relative content of mitochondrial DNA in human lung. *Febs Letters* 441:292-296.
- Lee HC and Wei YH. 2000. Mitochondrial role in life and death of the cell. *Journal of Biomedical Science* 7:2-15.
- Li N, Sioutas C, Cho A, Schmitz D, Misra C, Sempf J, et al. 2003. Ultrafine Particulate Pollutants Induce Oxidative Stress and Mitochondrial Damage. *Environ Health Perspect* 111.
- Li XY, Gilmour PS, Donaldson K and MacNee W. 1996. Free radical activity and pro-inflammatory effects of particulate air pollution (PM10) in vivo and in vitro. *Thorax* 51:1216-1222.

- Li Z, Hyseni X, Carter JD, Soukup JM, Dailey LA and Huang YC. 2006. Pollutant particles enhanced H₂O₂ production from NAD(P)H oxidase and mitochondria in human pulmonary artery endothelial cells. *Am J Physiol Cell Physiol* 291:C357-365.
- Linnane AW, Marzuki S, Ozawa T and Tanaka M. 1989. Mitochondrial DNA mutations as an important contributor to ageing and degenerative diseases. *Lancet* 1:642-645.
- Made KR, Diederick EG, Michiel LB, Manuel Castro C, Lydia EV, Anath O, et al. 2006. Lower birth weight predicts metabolic syndrome in young adults: The Atherosclerosis Risk in Young Adults (ARYA)-study. *Atherosclerosis* 184:21-27.
- Morello-Frosch R, Jesdale BM, Sadd JL and Pastor M. 2010. Ambient air pollution exposure and full-term birth weight in California. *Environ Health* 9:44.
- Myllynen P, Pasanen M and Pelkonen O. 2005. Human placenta: a human organ for developmental toxicology research and biomonitoring. *Placenta* 26:361-371.
- Nawrot TS, Perez L, Kunzli N, Munters E and Nemery B. 2011. Public health importance of triggers of myocardial infarction: a comparative risk assessment. *Lancet* 377:732-740.
- Parker JD, Rich DQ, Glinianaia SV, Leem JH, Wartenberg D, Bell ML, et al. 2011. The international collaboration on air pollution and pregnancy outcomes: initial results. *Environ Health Perspect* 119:1023-1028.
- Peretz A, Sullivan JH, Leotta DF, Trenga CA, Sands FN, Allen J, et al. 2008. Diesel exhaust inhalation elicits acute vasoconstriction in vivo. *Environ Health Perspect* 116:937-942.
- Sahin E, Colla S, Liesa M, Moslehi J, Muller FL, Guo M, et al. 2011. Telomere dysfunction induces metabolic and mitochondrial compromise. *Nature* 470:359-365.
- Salvi S, Blomberg A, Rudell B, Kelly F, Sandstrom T, Holgate ST, et al. 1999. Acute Inflammatory Responses in the Airways and Peripheral Blood After Short-Term Exposure to Diesel Exhaust in Healthy Human Volunteers. *Am J Respir Crit Care Med* 159:702-709.
- Scheers H, Mwalili SM, Faes C, Fierens F, Nemery B and Nawrot TS. 2011. Does air pollution trigger infant mortality in Western europe? A case-crossover study. *Environ Health Perspect* 119:1017-1022.
- Steadman RG. 1979. The Assessment of Sultriness. Part I: A Temperature-Humidity Index Based on Human Physiology and Clothing Science. *J. Appl. Meteor* 18:861-873.
- Veras MM, Damaceno-Rodrigues NR, Caldini EG, Maciel Ribeiro AA, Mayhew TM, Saldiva PH, et al. 2008. Particulate urban air pollution affects the functional morphology of mouse placenta. *Biol Reprod* 79:578-584.

- Wenz T. 2011. Mitochondria and PGC-1alpha in Aging and Age-Associated Diseases. *J Aging Res* 2011:810619.
- Wong J, McLennan SV, Molyneaux L, Min D, Twigg SM and Yue DK. 2009. Mitochondrial DNA content in peripheral blood monocytes: relationship with age of diabetes onset and diabetic complications. *Diabetologia* 52:1953-1961.
- Xia P, An HX, Dang CX, Radpour R, Kohler C, Fokas E, et al. 2009. Decreased mitochondrial DNA content in blood samples of patients with stage I breast cancer. *BMC Cancer* 9:454.
- Yu M, Zhou Y, Shi Y, Ning L, Yang Y, Wei X, et al. 2007. Reduced mitochondrial DNA copy number is correlated with tumor progression and prognosis in Chinese breast cancer patients. *IUBMB Life* 59:450-457.

Table 1. Primer sequences for selected genes and their accession number.

Gene symbol	Accession number	Nuclear/ Mitochondrial	Forward 5' – 3'	Reverse 5' – 3'	Primer Efficiency (%)
<i>MTF3212/R3319</i>	NC_012920.1	M	CACCCAAGAACAGGGTTTGT	TGGCCATGGGTATGTTGTTAA	96.3
<i>MT-ND1</i>	NC_012920.1	M	ATGGCCAACCTCCTACTCCT	CTACAACGTTGGGGCCTTT	99.3
<i>RPLP0</i>	NM_001002.3	N	GGAATGTGGGCTTTGTGTTC	CCCAATTGTCCCCTTACCTT	100.7
<i>ACTB</i>	NM_001101.3	N	ACTCTTCCAGCCTTCCTTCC	GGCAGGACTTAGCTTCCACA	96.8
<i>HBB</i>	NM_000518.4	N	GTGCACCTGACTCCTGAGGAGA	CCTTGATACCAACCTGCCAG	100.4

Mitochondrial forward primer from nucleotide 3212 and reverse primer from nucleotide 3319 (*MTF3212/R3319*); Mitochondrial encoded NADH dehydrogenase 1 (*MT-ND1*); Acidic ribosomal phosphoprotein P0 (*RPLP0*); Beta actin (*ACTB*); Hemoglobin beta (*HBB*).

Table 2. Study population characteristics ($n = 178$).

Characteristic	Mean \pm SD, geometric mean (25 th -75 th percentile) or number (%)
Maternal	
Age, y	29.1 \pm 4.9
< 20	6 (3.4%)
20-29	88 (49.4%)
30-35	65 (36.5%)
≥ 35	19 (10.7%)
Socioeconomic status	
Low	28 (15.7%)
Middle	58 (32.6%)
High	92 (51.69%)
Smoking	
Never	126 (70.8%)
Before pregnancy	24 (13.5%)
Before and during pregnancy	28 (15.7%)
Cigarettes / day	
0	124 (75.6%)
1 to 10	28 (17.1%)
≥ 11	12 (7.3%)
Pack-years of ever smokers	6.1 \pm 5.1
Pre-gestational BMI, kg/m ²	24.3 \pm 4.8
Net weight gain, kg	14.5 \pm 6.5
Parity	
1	101 (56.7%)
2	57 (32.0%)
≥ 3	20 (11.2%)
Daily apparent temperature, °C	8.4 \pm 1.6
Newborn	
Gestational age, w	39.2 (39-40)
Preterm delivery, < 37 w	
Yes	7 (3.9%)
No	171 (96.0%)
Sex	
Male	82 (46.0%)
Female	96 (53.9%)
Ethnicity	
European	156 (87.6%)
Non-European	22 (12.4%)
Season	
Cold period	104 (58.4%)
Warm period	74 (41.6%)
Apgar score	
1 min	8.4 (8-9)
5 min	9.5 (9-10)

Table 2 (cont.) Study population characteristics ($n = 178$).

Characteristic	Mean \pm SD, geometric mean (25 th -75 th percentile) or number (%)
Neonate birth weight, g	3403 \pm 386.66
Neonate length, cm	50 (49-51)
Placental mtDNA content ^a	1.03 (0.6-1.63)
Umbilical cord mtDNA content ^b	1.02 (0.75-1.30)
White blood cells, x10.e3/ μ L	15.3 \pm 4.6
Neutrophils, %	52.3 \pm 8.5
Platelets, x10.e3/ μ L	289.4 \pm 95.4

Data are presented as arithmetic means \pm standard deviation (SD) or number (%). Not normally distributed values are presented as geometric means with 25th-75th percentiles. mtDNA content is determined as mtDNA copy number (mean of *MTF3212/R3319* and *MT-ND1*) normalized to nDNA copy number (mean of *RPLP0*, *ACTB* and *HBB*).

^a Data available for 174 subjects. ^b Data available for 176 subjects.

Table 3. Exposure characteristics.

Pollution indicator	Mean ^a	SD	25 th percentile	75 th percentile
Particulate matter (PM ₁₀), µg/m ³				
Week (Mean Lag 0-7)	24.9	11.1	17.5	30.5
Last month	25.6	8.6	19.3	29.5
Trimester 1	21.5	5.1	18.1	23.7
Trimester 2	22.3	4.3	19.3	25.3
Trimester 3	24.4	5.7	20.2	28.1
Whole pregnancy	22.7	3.7	20.1	25.1
Traffic-related pollution				
Residential distance to major road, meters	207		85	676

^a Arithmetic mean except for the residential distance to major road, which was not normally distributed, for which the geometric mean is given.

Table 4. Estimated change in placental and umbilical cord blood mtDNA content in association with PM₁₀ during pregnancy or distance from residence to nearest major road.

Variable	Placental tissue (<i>n</i> = 174)			Umbilical cord blood (<i>n</i> = 176)		
	Percentage change	95% CI	<i>p</i> -value	Percentage change	95% CI	<i>p</i> -value
Time window, PM ₁₀ ^{a, b}						
Trimester 1	-10.9%	-27.1 to 8.9%	0.26	11.2%	-6.0 to 31.6%	0.22
Trimester 2	-1.3%	-20.7 to 22.9%	0.91	1.8%	-14.2 to 20.8%	0.84
Trimester 3	-17.4%	-31.8 to -0.1%	0.05	-5.8%	-20.0 to 11.0%	0.48
Last month	-16.1%	-25.2 to -6.0%	0.003	-3.6%	-12.3 to 6.0%	0.45
Week (Mean Lag 0-7)	-10.1%	-17.6 to -1.9%	0.02	-4.6%	-11.0 to 2.2%	0.20
Traffic						
Distance from residence to a major road ^{b, c}	4.0%	0.4 to 7.8%	0.03	-2.0%	-4.8 to 0.9%	0.17

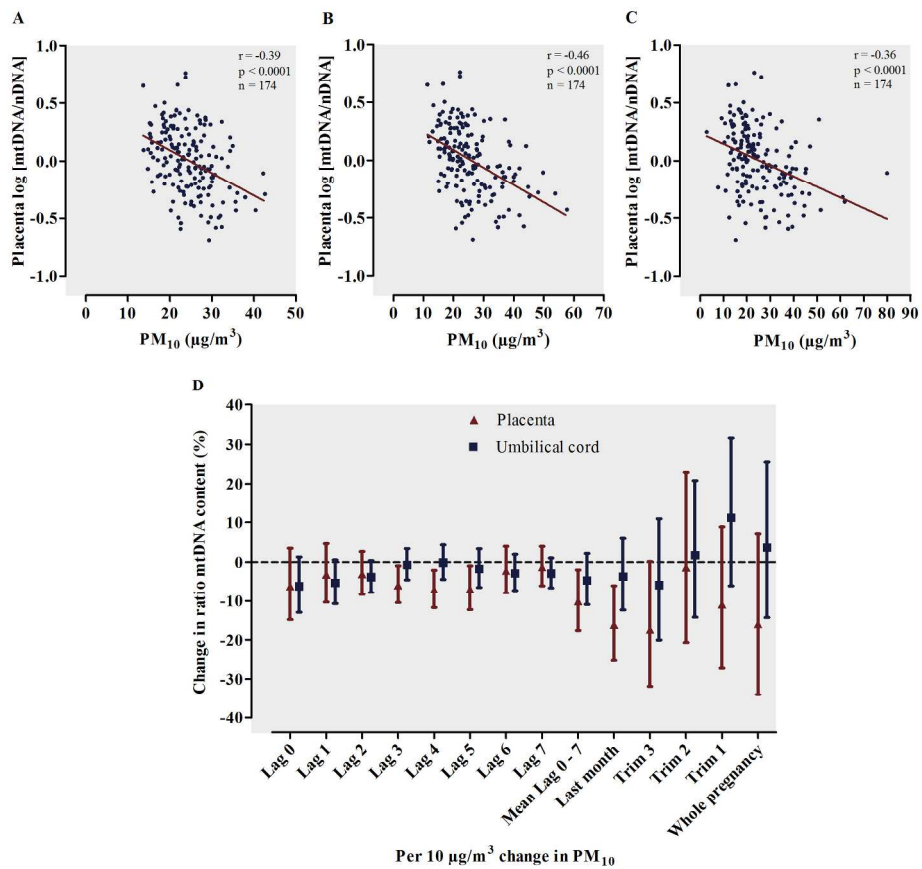
^a Effect size was estimated for each 10 µg/m³ increase in PM₁₀ exposure at mother's residence during the corresponding period.

^b Adjusted for newborn's sex (boy/girl), maternal age (years), parity (continues), gestational age (weeks), ethnicity (European/non-European), smoking status (never, before, current) season (cold/warm period), and time-specific apparent temperature (°C). Additionally, umbilical cord blood was adjusted for blood cell count (# of white blood cells, % neutrophils, and # of platelets).

^c Percentage was calculated for each doubling in distance from residence to major road (based on a model with log distance and log mtDNA content).

Figure Legend

Figure 1. Association between mtDNA content in placental tissue or cord blood and PM₁₀ exposure. Three correlation plots are given, each indicating PM₁₀ exposure during a period of pregnancy: third trimester (A), the last month of pregnancy (B) and mean of 7 days before delivery (C). In panel D, the percent change (95% CI) in mtDNA content of both placental tissue and cord blood for each 10 µg/m³ increase of PM₁₀ exposure. The model is adjusted for newborn's sex, maternal age, parity, gestational age, ethnicity, smoking status, season and time-specific apparent temperature. Additionally, umbilical cord blood was adjusted for blood cell count (# of white blood cells, % neutrophils and # of platelets). PM₁₀ concentrations are given in µg/m³. Values of mtDNA content are log transformed.



213x196mm (300 x 300 DPI)