

Short-term phytotoxicity in *Brassica napus* (L.) in response to pre-emergently applied metazachlor: A microcosm study

Supplementary material

VERCAMPT, Hanne; Koleva, Lyubka; Vassilev, Andon; VANGRONSVELD, Jaco & CUYPERS, Ann (2017) Short-term phytotoxicity in *Brassica napus* (L.) in response to pre-emergently applied metazachlor: A microcosm study. In: ENVIRONMENTAL TOXICOLOGY AND CHEMISTRY, 36(1), p. 59-70.

DOI: 10.1002/etc.3538

Handle: <http://hdl.handle.net/1942/23281>

Figure 1

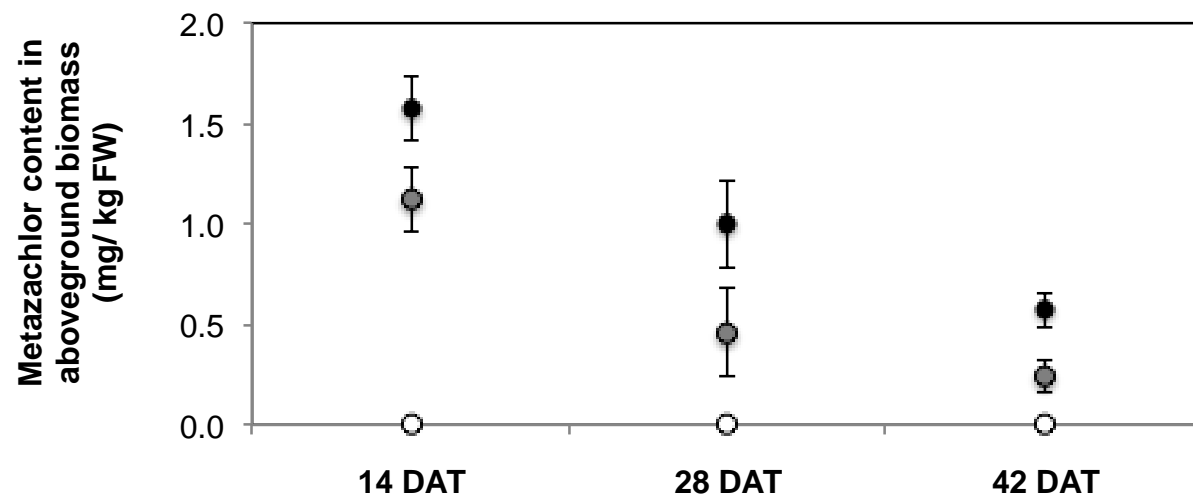


Figure 2

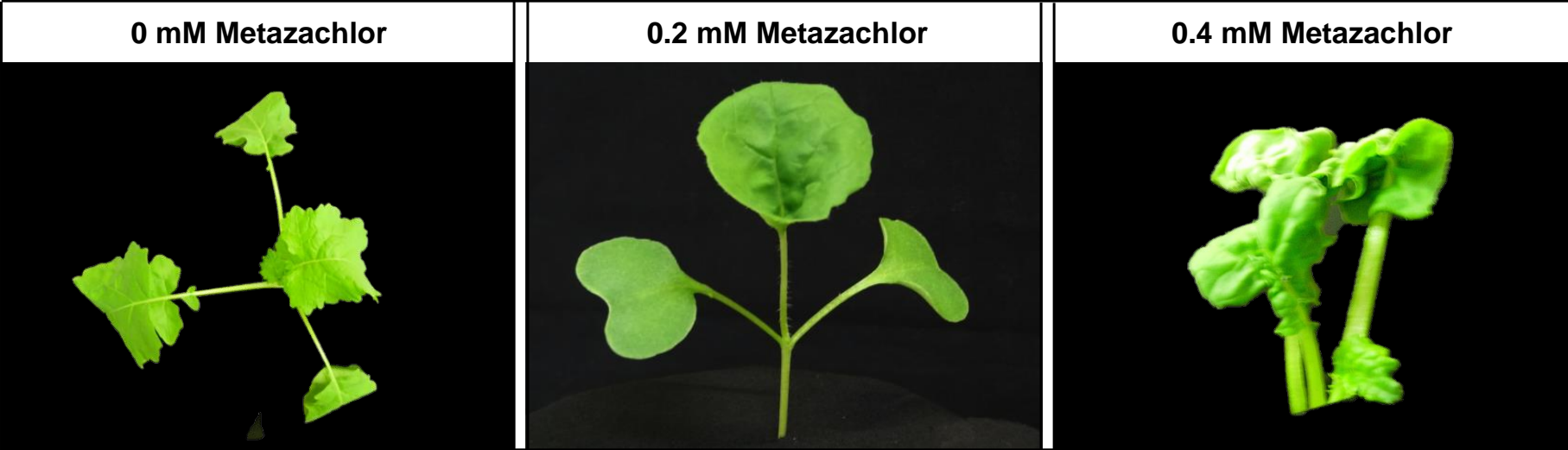


Figure 3

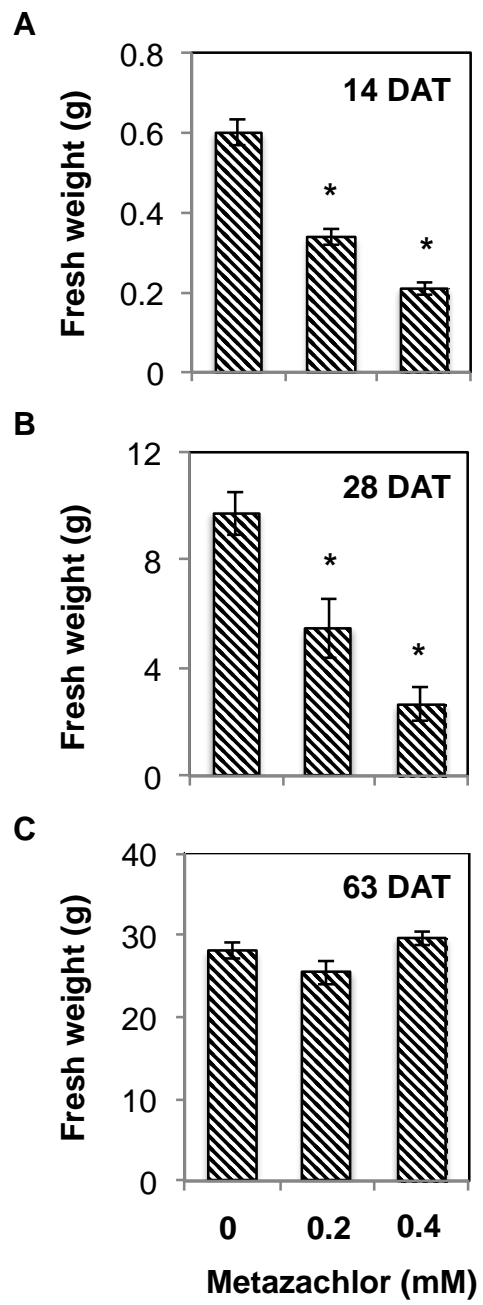


Figure 4

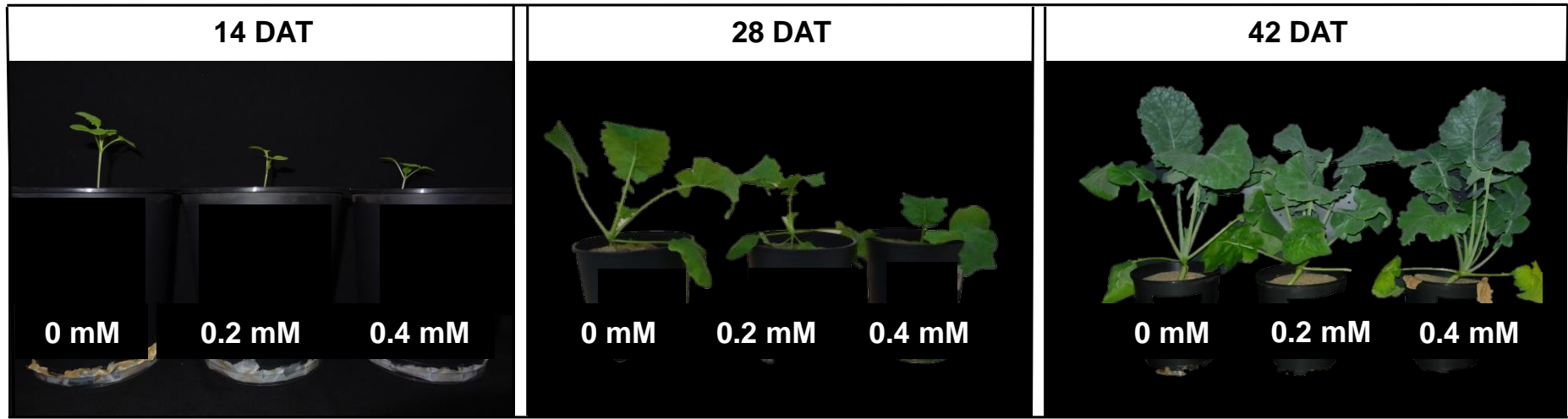


Figure 6

