

Active liver X receptor signaling in phagocytes in multiple sclerosis lesions

Peer-reviewed author version

MAILLEUX, Jo; VANMIERLO, Tim; BOGIE, Jeroen; WOUTERS, Elien; Lütjohann, Dieter; HENDRIKS, Jerome & VAN HORSSSEN, Jack (2018) Active liver X receptor signaling in phagocytes in multiple sclerosis lesions. In: Multiple Sclerosis Journal, 24 (3), p. 279-289.

DOI: 10.1177/1352458517696595

Handle: <http://hdl.handle.net/1942/23716>

ACTIVE LIVER X RECEPTOR SIGNALING IN MULTIPLE SCLEROSIS LESIONS

Abstract

Objective: We sought to determine the LXR ligands present in human macrophages after myelin phagocytosis and whether LXRs are activated in MS lesions.

Methods: We used real-time quantitative PCR and immunohistochemistry to determine expression of LXRs and their response genes in human phagocytes after myelin phagocytosis and in active MS lesions. We used gas chromatographic/mass spectrometric analysis to determine LXR-activating oxysterols and cholesterol precursors present and formed in myelin and myelin-incubated cells, respectively.

Results: Myelin induced LXR response genes ABCA1 and ABCG1 in human monocyte-derived macrophages. In active MS lesions, we found that both gene expression and protein levels of ABCA1 and APOE are upregulated in foamy phagocytes. Moreover, we found that the LXR ligand 27-hydroxycholesterol (27OHC) is significantly increased in human monocyte-derived macrophages after myelin uptake.

Conclusions: LXR response genes are upregulated in phagocytes present in active MS lesions, indicating that LXRs are activated in actively demyelinating phagocytes. In addition, we have shown that myelin contains LXR ligands and that 27OHC is generated in human monocyte-derived macrophages after myelin processing. This suggests that LXRs in phagocytes in active MS lesions are activated at least partially by (oxy)sterols present in myelin and the generation thereof during myelin processing.

Introduction

Multiple sclerosis (MS) is a chronic inflammatory, demyelinating, and neurodegenerative disease of the CNS (1). Acute inflammatory focal demyelination and the resulting neurodegeneration are among the most prominent pathological hallmarks of MS. Monocyte-derived macrophages and resident microglia secrete inflammatory and toxic mediators that negatively impact axonal and myelin integrity (2-4). Moreover, phagocytes contribute to MS lesion formation by phagocytosing myelin, apoptotic cells, and cellular debris. Although degeneration of myelin is considered detrimental, its clearance is essential prior to initiation of remyelination. Myelin debris contains proteins that inhibit both axonal re-growth and differentiation of oligodendrocyte precursor cells into mature oligodendrocytes during remyelination (5, 6). This emphasizes the cardinal role of phagocytes in stimulating CNS repair.

Cholesterol is the most abundant lipid within myelin (7) and plays a key role in myelination, illustrated by perturbed myelin formation in mice with defective cholesterol synthesis in the myelin-forming oligodendrocytes (8). Virtually all cholesterol within the CNS is synthesized *in situ* and a stable turnover is necessary to maintain cholesterol homeostasis (9). Breakdown of myelin results in a disturbed CNS cholesterol metabolism in MS patients, demonstrated by altered plasma levels of CNS-specific cholesterol metabolites 24(S)-hydroxycholesterol (24SOHC) and 27-hydroxycholesterol (27OHC) (10-12). Infiltrating macrophages and resident microglia phagocytose myelin leading to an increased uptake of cholesterol. This may lead to the formation of intracellular oxysterols. Oxysterols and other intermediates of the cholesterol biosynthetic pathway, such as desmosterol, are natural liver X receptor (LXR) ligands, fueling cellular sterol efflux (13). Both isoforms, LXR α and LXR β , are expressed in the CNS and immune cells (14, 15). When activated, LXRs heterodimerize with retinoid x receptors (RXR). They regulate the expression of genes that participate in reverse cholesterol transport, such as ATP binding cassette transporter (*ABC*) *A1*, *ABCG1*, and apolipoprotein E (*APOE*). LXRs have also emerged as suppressors of inflammatory pathways in macrophages through SUMOylation (16, 17). Evidence is emerging that macrophages display an anti-inflammatory phenotype upon myelin phagocytosis (18-20), suggesting that myelin contains functional LXR ligands or leads to the formation thereof. Recently, we demonstrated that myelin-derived lipids are able to activate LXRs in rat macrophages and skew these macrophages towards a less inflammatory phenotype *in vitro* (21). However, it is currently unknown if LXRs are activated in phagocytes in active MS lesions. We hypothesize that the uptake of myelin and the subsequent formation of LXR ligands, results in the activation of LXRs in phagocytes in active MS lesions.

We show that phagocytosis of myelin by human monocyte-derived macrophages leads to a significant induction of LXR response genes. In addition, we show that infiltrated macrophages and resident microglia

express enhanced levels of LXR α , ABCA1 and APOE in active demyelinating lesions. Lastly, we show that the oxysterol 27OHC is formed after myelin uptake and processing. The formation of this LXR ligand may explain the LXR activation seen in myelin-phagocytosing phagocytes in active demyelinating lesions.

Methods

Myelin Isolation

Myelin was purified from human brain tissue by density-gradient centrifugation, as described previously (22). Protein concentration was determined using a BCA protein assay kit (Thermo Fisher Scientific, Erembodegem, Belgium). Endotoxin content was determined using a LAL Chromogenic endotoxin quantitation kit (Thermo Fisher). The isolated myelin contained a negligible amount of endotoxin ($<1.8 \times 10^{-3}$ pg/ μ g myelin).

Cell culture

Human peripheral blood mononuclear cells (PBMCs) were obtained from consented healthy donors using Ficoll (Cedarlane Labs, Canada) density gradient. Monocytes were isolated from the PBMCs by anti-CD14 EasySep microbeads (Stemcell technologies, Grenoble, France) according to manufacturer's instructions. Monocytes (1×10^6 cells/ml) were cultured in 24-well plates (Greiner Bio-one) in macrophage differentiation medium (RPMI (Lonza, Vervier, Belgium), supplemented with 10% v/v normal fetal calf serum (Life Technologies, Ghent, Belgium) and 50 U/ml v/v penicillin-streptomycin (Sigma-Aldrich, Bornem, Belgium)), at 37°C, 5% CO₂. Monocytes matured into macrophages in the course of 7 days. For experiments, myelin (100 μ g/ml) was added to macrophages for 24 hours preceding mRNA extraction.

Autopsy material

Brain tissue samples were obtained from the Netherlands Brain Bank. All patients, healthy controls or their next of kin, had given informed consent for autopsy and use of brain tissue for research purposes. Active lesions were immunohistochemically characterized as lesions with abundant immune cell infiltrates and extensive myelin loss (table 1).

Table 1 Brain tissue characteristics. (NDC; non demented controls, RR-MS; relapse remitting MS, PP-MS; primary progressive MS; SP-MS; secondary progressive MS). Cases marked * were used for IHC, cases marked + were used for qPCR.

Nr.	Autopsy	Diagnosis	Gender	Age	Type MS
1	S94-163 ⁺	NDC	Female	74y	-
2	S95-019 ⁺	NDC	Male	54y	-
3	S96-373 ⁺	NDC	Male	70y	-
4	S01-016 ⁺	NDC	Female	64y	-
5	S01-174 ⁺	NDC	Female	47y	-
6	S97-131 ⁺	NDC	Female	65y	-
7	S01-58 ⁺	MS	Female	48y	RR-MS

8	S01-298⁺	MS	Female	53y	RR-MS
9	S03-142⁺	MS	Male	53y	PP-MS
10	S04-045⁺	MS	Female	41y	RR-MS
11	S99-261*	MS	Female	38y	RR-MS
12	S07-269*	MS	Male	41y	PP-MS
13	S07-314⁺	MS	Female	66y	SP-MS
14	S09-152*	MS	Male	50y	Unknown
15	S11-008*	MS	Male	54y	RR-MS

Quantitative PCR

Total RNA was prepared using the RNeasy mini kit (Qiagen, Venlo, The Netherlands) according to the manufacturer's instructions with the following modification: Qiazol lysis reagent (Qiagen) with 1% β -mercaptoethanol (Sigma-Aldrich) was used as lysis buffer. RNA concentration and purity was determined using a Nanodrop spectrophotometer (Isogen Life science). RNA was converted to cDNA using qScript cDNA SuperMix (Quanta Biosciences, Boston, USA) according to the manufacturer's instructions. Quantitative PCR (qPCR) was conducted on a StepOnePlus™ Real-Time PCR system (Applied biosystems, Ghent, Belgium). The SYBR green master mix (Applied biosystems), 10 μ M of forward and reverse primers, nuclease free water and 12.5 ng template cDNA in a total reaction volume of 10 μ l. Relative quantification of gene expression was accomplished by using the comparative Ct method. Data were normalized to the most stable reference genes. Primers were chosen according to literature or designed using Primer-express (<http://www.ncbi.nlm.nih.gov/tools/primer-blast>). Details of primers used are shown in table 2.

Table 2 Primers used to measure the relative expression of different human genes.

Gene	Sequence (5'-3')	Product size	Accession number
LXR α forward	CGCACTACATCTGCCACAGT	159 bp	NM_001251935.1
LXR α reverse	CTTGCCGCTTCAGTTTCTTC		
LXR β forward	CAGCAGCAGGAGTCACAGTC	157 bp	NM_001256647.1
LXR β reverse	GTTCTTGAGCCGCTGTTAGC		
ABCA1 forward	AACGAGACTAACCAGGCAATC	148 bp	NM_005502.3
ABCA1 reverse	ACACAATACCAGCCAGAAC		
ABCG1 forward	CCAGAAGTCGGAGGCCATC	63 bp	NM_207629.1
ABCG1 reverse	AAGTCCAGGTACAGCTTGGCA		
APOE forward	ACTGGGTCGCTTTTGGGATT	64 bp	NM_000041.2
APOE reverse	CTCCTCCTGCACCTGCTCA		

TBP forward	TATAATCCCAAGCGGTTTGC		
TBP reverse	GCTGGAAAACCCAACTTCTG	170 bp	NM_003194.4
CYCA forward	AGACTGAGTGGTTGGATGGC		
CYCA reverse	TCGAGTTGTCCACAGTCAGC	142 bp	NM_021130.3
YWHAZ forward	CTTGACATTGTGGACATCGG		
YWHAZ reverse	TATTTGTGGGACAGCATGGA	145 bp	NM_003406.3
Rpl13a forward	AAGTTGAAGTACCTGGCTTTCC		
Rpl13a reverse	GCCGTCAAACACCTTGAGAC	171 bp	NM_012423.3

Immunohistochemistry

Snap-frozen brain tissue was sectioned at 5 μ m and stained for proteolipid protein (PLP, 1:500, MCA839G, AbD Serotec, Temse, Belgium) and HLA-DR (biotin-labeled clone LN3, eBioscience; 13-9956) to determine MS lesion type. All antibodies were diluted in phosphate buffered saline (PBS) with 1% bovine serum albumin (BSA, Sigma-Aldrich).

For DAB-stainings, sections were air-dried and fixed in acetone for 10 minutes. Endogenous peroxidase activity was quenched by incubating the slides in 0.3% hydrogen peroxide. Sections of each tissue sample were incubated either with goat anti-LXR α (1:200, kindly provided by Prof. Dr. Gustafsson), goat anti-LXR β (1:200, kindly provided by Prof. Dr. Gustafsson), rabbit anti-ABCA1 (1:200, NB400-105, Novus biologicals, Denver, USA), rabbit anti-APOE (1:200, NBP1-19807, Novus biologicals), or rabbit anti-LDLR (1:400, NB110-57162, Novus biologicals) for 60 minutes at room temperature. Then, slides were incubated with EnVision+ Dual Link System-HRP (DAKO, Heverlee, Belgium) for 30 minutes or with HRP labeled rabbit anti-goat (1:100, DAKO) for 60 minutes at room temperature. 3, 3'-diaminobenzidine (DAB+, DAKO) was used as chromogen. Sections were thoroughly washed with PBS between each incubation step. After a short rinse in tap water, sections were incubated with hematoxylin for 1 minute and extensively washed with tap water for 10 minutes. Sections were dehydrated with ethanol followed by xylene and mounted with Entellan (Merck).

For immunofluorescence staining, sections were air-dried and fixed in acetone for 10 minutes. Non-specific binding was blocked using 1% BSA in PBS for 30 minutes. Sections of each tissue sample were incubated either with anti-LXR α , anti-LXR β , anti-ABCA1, anti-APOE or anti-LDLR overnight at 4°C followed by incubation with Alexa-488-labeled donkey anti-goat (1:150, Molecular Probes) or Alexa-488-labeled goat anti-rabbit (1:400, Molecular Probes). To visualize HLA-DR positive macrophages, an antibody against HLA-DR (biotin-labeled clone LN3, eBioscience; 13-9956) was subsequently applied for 60 minutes. HLA-DR

slides were further incubated with Alexa-555-labeled streptavidin (1:400, Molecular Probes). Analysis was carried out using a Nikon eclipse 80i microscope and NIS Elements BR 4.20 software (Nikon).

Oil red O staining

Myelin treated human monocyte-derived macrophages were fixed using 4% paraformaldehyde (Sigma-Aldrich) for 20 min. Next, cells were stained with oil red O (ORO) (Sigma-Aldrich) for 10 min and exhaustively rinsed with water. In order to quantify intracellular myelin levels, 1 ml of isopropyl alcohol was added to the stained culture dish, the extracted dye was immediately removed by gentle pipetting and its absorbance determined spectrophotometrically at 510 nm. To delineate active MS lesion tissue for qPCR, cryosections (unfixed) were stained with ORO for 10 min and exhaustively rinsed with water. Next, a hematoxylin counterstain was applied and cryosections were subsequently mounted.

Sterol analysis

Human monocyte-derived macrophages were treated with or without 100µg/ml human myelin for 24 hours. Next, the medium containing myelin was collected and stored for further analysis, while cells were incubated for another four days in fresh medium. Cells were then lysed in 1M NaOH (in 80% ethanol) and sterols were subsequently extracted from cell lysates and medium using chloroform-methanol (2:1). Sterol levels were determined by gas chromatograph mass spectrometer (GC/MS) as described previously (23, 24). The change in amount of sterols was determined by subtracting (condition with myelin) from (condition no myelin), and subsequently dividing it by the amount of sterols present in pure myelin after normalizing with the plant sterol campesterol, which is not metabolized by mammalian cells (25). A flow diagram of the experimental design is included in figure 4B.

Statistical Analysis

Data were statistically analyzed with GraphPad Prism 5 for windows and are reported as mean values \pm standard error (SEM). D'Agostino and Pearson omnibus normality test was used to test normal distribution. An analysis of variances (ANOVA) or two-tailed unpaired student t-test (with Welch's correction if necessary) was used for normally distributed data sets ($t(df)$; P). The Mann-Whitney U analysis (MWU, n_1 , n_2 ; P) was used for data sets which did not pass normality. * $P < 0,05$, ** $P < 0,01$ and *** $P < 0,001$.

Results

Induction of LXR response gene expression in human monocyte-derived macrophages after myelin uptake

To investigate if LXRs in human monocyte-derived macrophages are activated after myelin uptake, we determined the expression of well-known LXR downstream targets by quantitative real-time PCR (qPCR) analysis. mRNA expression of the autoregulated LXR α and LXR response genes ABCA1 and ABCG1 was increased in myelin-treated cells, compared to non-treated cells, whereas LXR β and APOE mRNA levels remained unchanged (fig. 1). The Ct value of LXR α in unstimulated cells is lower than LXR β (LXR α :17.90 vs. LXR β :26.38). The threshold cycle is inversely proportional to the expression level indicating that LXR α mRNA expression is ~250 times higher than LXR β in human macrophages (fig. S1). This indicates that LXR α appears to be the dominant driver behind LXR signaling in macrophages.

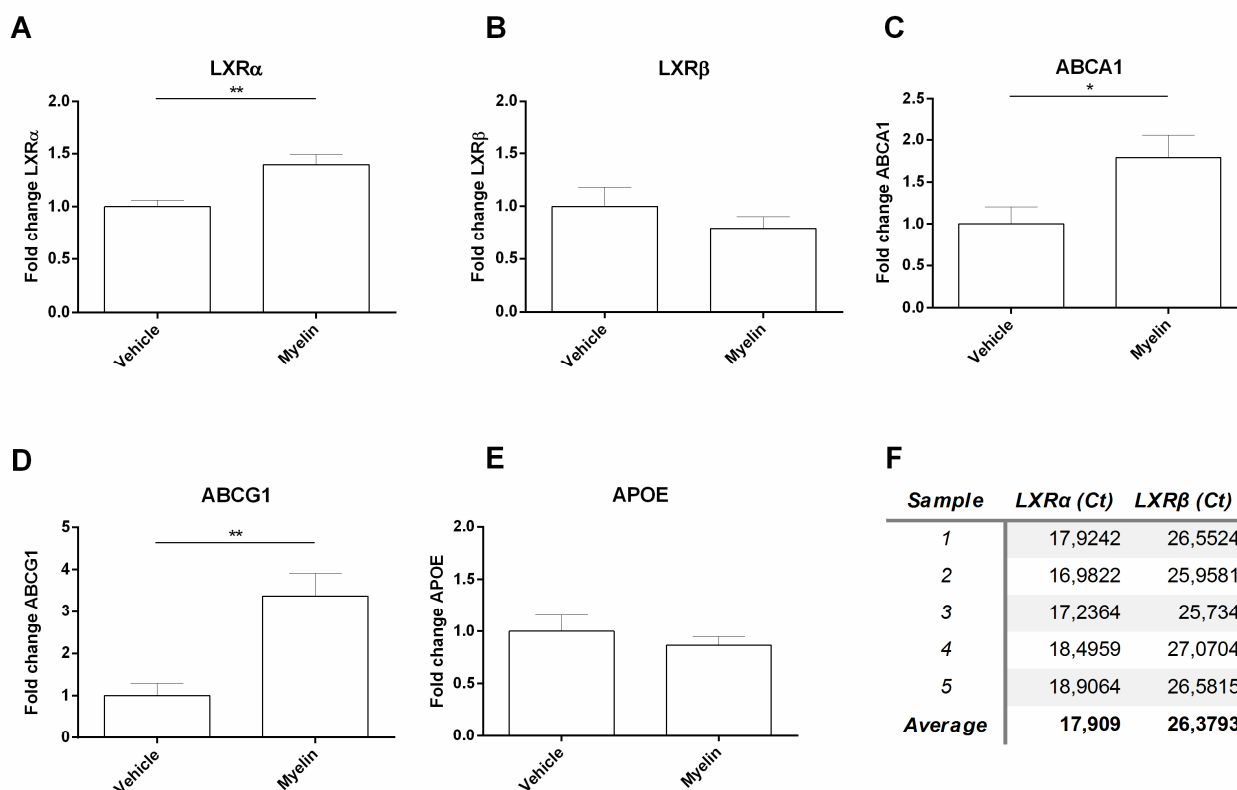


Figure 1 LXR activation after myelin phagocytosis in human monocyte-derived macrophages.

Comparison of fold changes of LXRs and their response genes between untreated (n=11) and myelin-treated (100 μ g/ml) human monocyte-derived macrophages (n=11). Relative quantification of LXR α (t(20)=3.516; p<0.003) (A), LXR β (B), ABCA1 (MWU=29; 11; 11; p<0.039) (C), ABCG1 (MWU=8; 11; 11; p<0.001) (D) and APOE (E) was accomplished by using comparative Ct method. Data were normalized

to the most stable reference genes, determined by Genorm (TBP and CYCA). **Induction of LXR response gene expression in active MS lesions**

To determine whether LXRs are activated in MS lesions, gene expression levels of LXRs and downstream targets were determined (fig 2). RNA was isolated from regions accommodating lipid-containing macrophages and microglia, determined by Oil Red O (ORO) staining. mRNA expression of LXR α and its response genes ABCA1 and APOE were increased in active lesions, compared to white matter tissue from non-neurological controls (fig. 2A, C, E). Moreover, LXR β mRNA expression was significantly reduced in active MS lesions, whereas the expression of ABCG1 remained unchanged. These results show LXR response genes are upregulated in active demyelinating MS lesions.

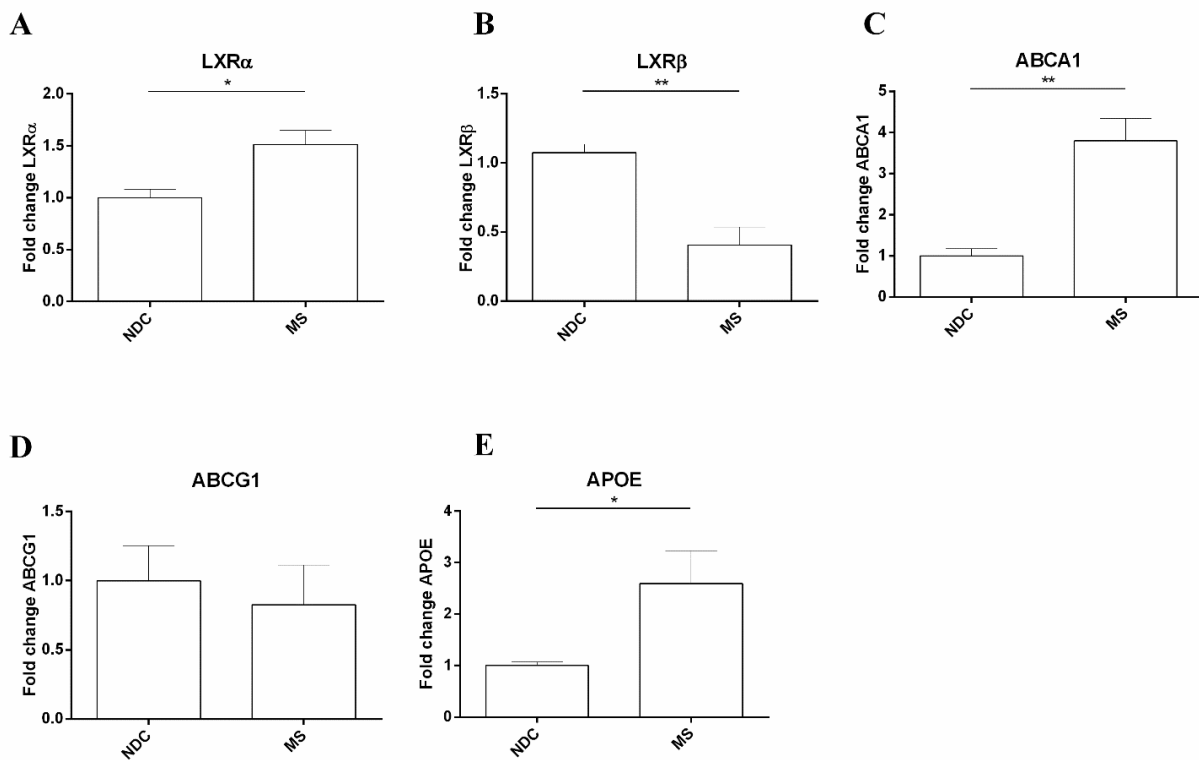


Figure 2 Active LXR signaling in MS lesions. Comparison of fold changes of LXRs and their response genes between non-demented controls (n=6, see table 1 nr:1-6) and active MS lesions (n=5, see table 1 nr:7-11). Relative quantification of LXR α (MWU=6; 6; 5; p<0.012) (A), LXR β (t(11)=3.620; p<0.004) (B), ABCA1 (t (12) =4.293; p<0.001) C), ABCG1 (D) and APOE (MWU=9; 6; 5; p<0.036) (E) was accomplished by using comparative Ct method. Data were normalized to the most stable reference genes, determined by Genorm (YWHAZ and Rpl13a). NDC; non-demented controls.

LXR downstream targets ABCA1 and APOE are upregulated in phagocytes in active MS lesions

To determine whether LXR response genes are also induced at protein level in MS lesions and to establish the cellular location of this induction, we determined the expression of LXRs and LXR response genes in active MS lesions by immunohistochemistry. For this purpose, we selected active demyelinating MS lesions of four MS cases (table 1). Identification of active lesions was based on immunohistochemical analysis of phagocytes (anti-HLA-DR) and proteolipid protein (PLP). Active lesions are characterized by extensive myelin loss and abundant myelin-containing phagocytic macrophages and microglia (fig. 3A-C). We found that the LXR response genes ABCA1, APOE, LXR α , and LXR β are abundantly expressed in active lesions (fig. 3D-E, G-H, J-K, and M-N). Double immunofluorescence stainings revealed that ABCA1, APOE, and LXR α/β were highly expressed in HLA-DR $^{+}$ cells with a foamy appearance (fig. 3F, I, L, O) suggesting that LXRs are activated in phagocytes in active MS lesions.

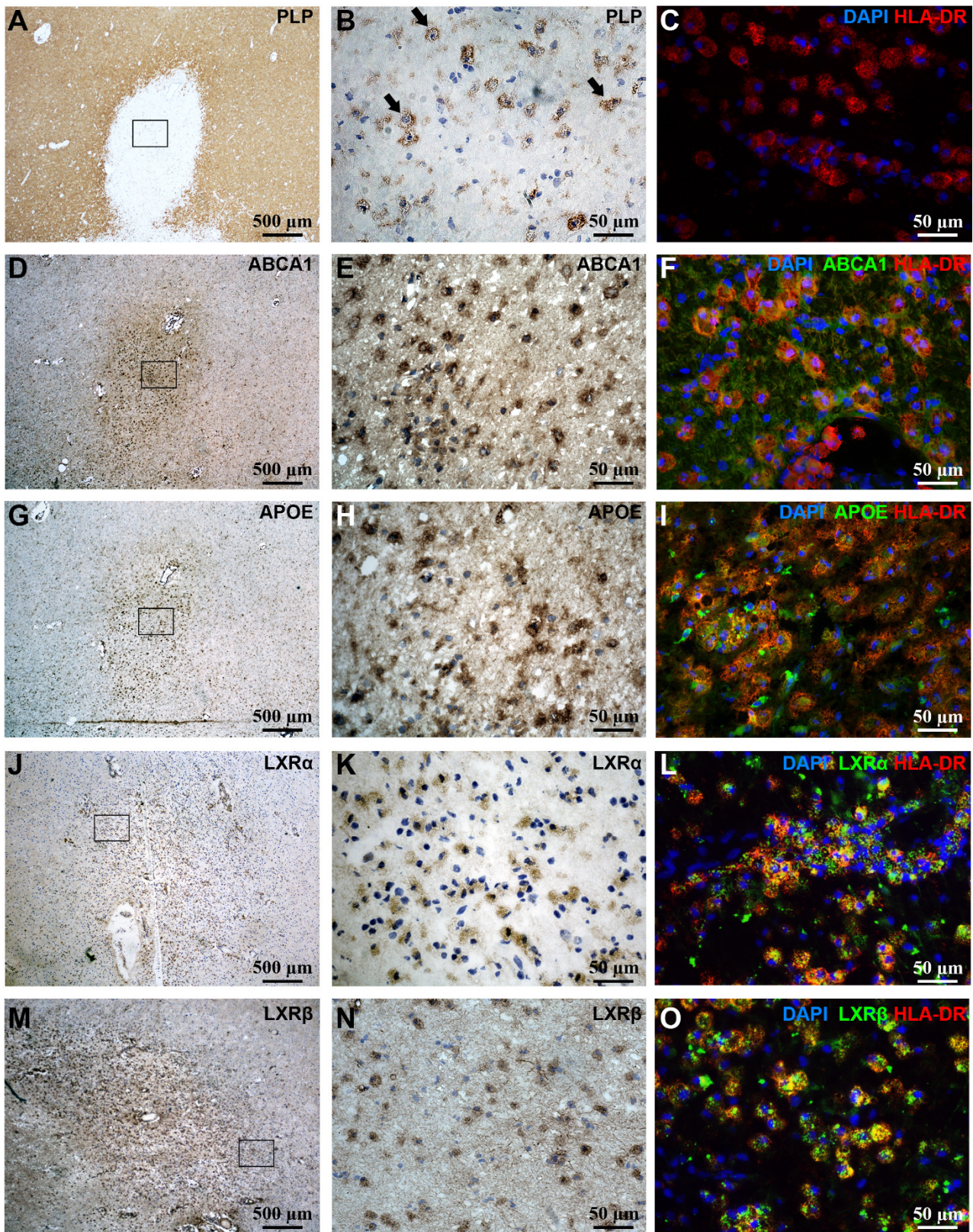


Figure 3 LXR α and LXR β are activated in HLA-DR $^{+}$ phagocytes in active MS lesions. Extensive demyelination and PLP $^{+}$ phagocytic cells (black arrows) are observed in active MS lesions (A, B: proteolipid protein). Figure B represents a magnification of the outlined square in A. Active lesions are characterized by infiltrating macrophages and microglia expressing HLA-DR (C). ABCA1 (D, E), APOE (G, H), LXR α (J, K), and LXR β (M, N) were abundantly expressed by phagocytes. Figure E, H and K represent a magnification

of the outlined square in D, G and J respectively. ABCA1 (F), APOE (I) and LXR α/β (L/O) were strongly expressed by HLA-DR+ phagocytes in active lesions. Original magnifications: A, D, G, J and M: 4x; B, C, E, F, H, I, K, L, N and O: 40x.

27-hydroxycholesterol is formed in human monocyte-derived macrophages after myelin ingestion

After myelin is phagocytosed, it is degraded inside the cell (fig. 4A). Myelin, visualized by ORO-staining, is rapidly phagocytosed and intracellular levels remain stable until day four. At day five a decline can be seen, indicating processing of myelin and possibly the release of cholesterol oxidation products. Using GC/MS we determined cellular oxysterol levels in human macrophages, treated with or without myelin incubated for five days. We compared these levels with the levels present in human myelin (fig. 4B-C). We found that while levels of cholesterol and the LXR ligand desmosterol were decreased after five days of myelin ingestion, 27OHC, but not 24OHC levels, were significantly increased in macrophages.

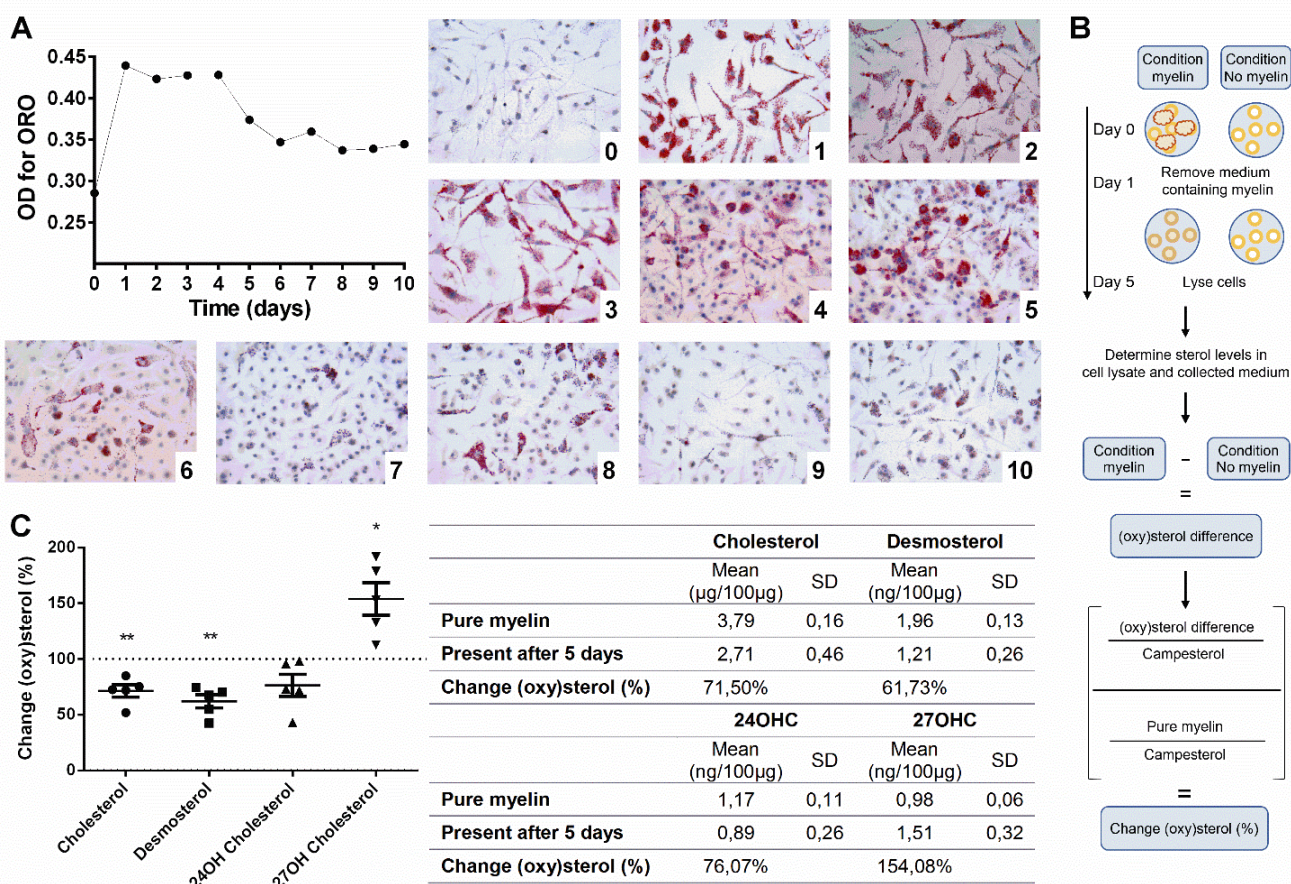


Figure 4 Degradation of myelin and the formation of 27OHC. A) Monocyte-derived macrophages (0) were treated with 100 $\mu\text{g}/\text{ml}$ myelin (24h) after which the unbound myelin was washed away and incubated for 10 consecutive days (1-10). Intracellular myelin was visualized by ORO staining. Quantification was performed by determining the extracted dye. B) Flow diagram of the experimental design. C) Human monocyte-derived macrophages were treated with 100 $\mu\text{g}/\text{ml}$ myelin for 24h, after which the unbound

myelin was washed away and cells incubated for another four days. Next, cholesterol, desmosterol and oxysterol levels were determined in the samples using GC/MS. Sterols were normalized using the plant sterol campesterol which is not metabolized. Relative levels of cholesterol ($t(4)=5.318$; $p<0.006$, ●), desmosterol ($t(4)=6.503$; $p<0.003$, ■), 24OH (▲) and 27OH ($t(4)=3.720$; $p<0.021$, ▼) are shown ($n=5$).

27-hydroxycholesterol induces LXR response gene expression in human monocyte-derived macrophages

We calculated that the concentration of 27OHC present per 1×10^6 macrophages after five days of myelin incubation is around $5 \mu\text{M}$. Therefore, we treated human monocyte-derived macrophages with 27OHC to determine whether the level of 27OHC induced in myelin phagocytosing macrophages is sufficient to induce LXR response gene expression (fig. 5). The expression of LXR α (MWU=0; 5; 5; $p<0.008$) and its response genes ABCA1 (MWU=1; 5; 5; $p<0.016$) and ABCG1 (MWU=0; 5; 5; $p<0.008$) was significantly increased in 27OHC-treated cells, compared to non-treated cells whereas LXR β and APOE mRNA expression remained unchanged. These results suggest that the amount of 27OHC present in vitro after myelin phagocytosis activates LXRs.

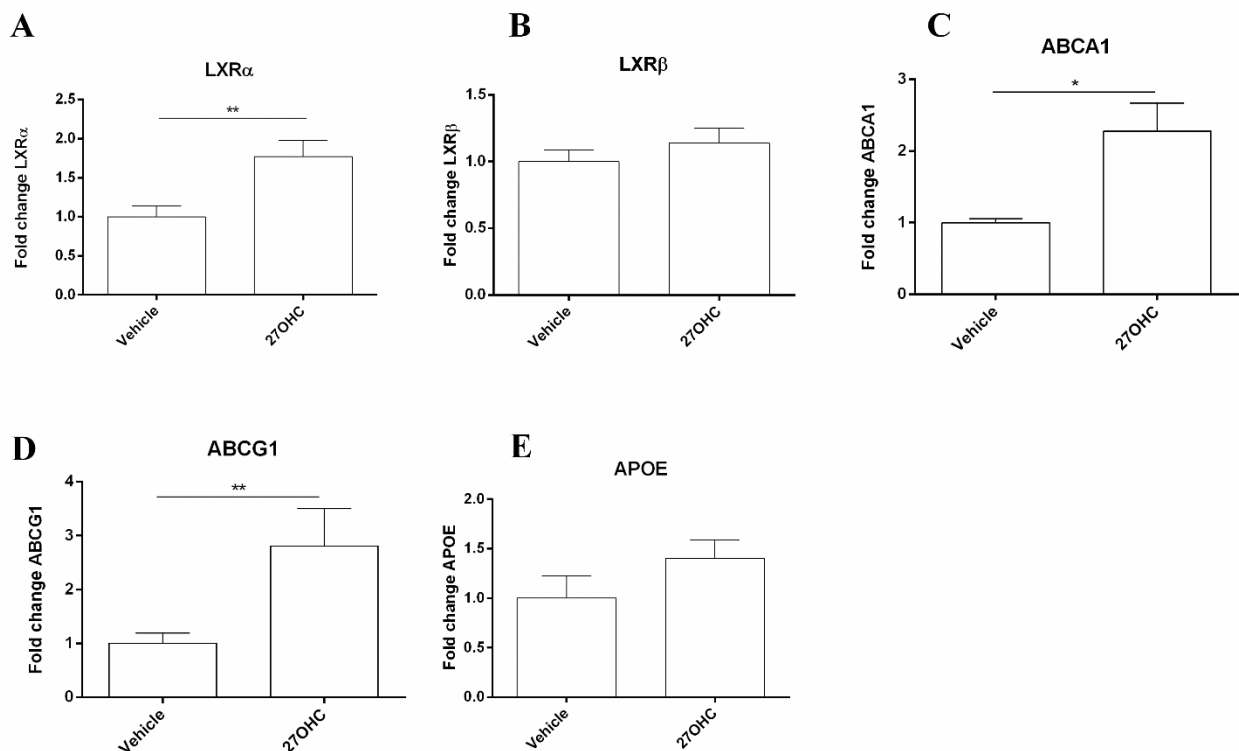


Figure 5 LXR activation after 27OHC treatment. Comparison of fold changes between untreated ($n=5$) and 27OHC-treated ($5 \mu\text{M}$) human monocyte-derived macrophages ($n=5$) for 24h. Relative quantification of LXR α (A), LXR β (B), ABCA1 (C), ABCG1 (D) and APOE (E) was accomplished by using comparative Ct method. Data were normalized to the most stable reference genes, determined by Genorm (YWHAZ and RPL13a).

Discussion

In this study, we show that LXRs and their downstream targets are induced in myelin-laden macrophages in active demyelinating MS lesions, indicative of LXR activation. In active lesions, macrophages and activated microglia contribute to lesion progression by phagocytosing large quantities of myelin. Conceivably, upon myelin processing, LXR ligands are released leading to the upregulation and activation of LXRs, and their response genes. LXRs are master regulators of cholesterol metabolism and inflammatory responses and are critical for brain homeostasis. By activation of LXRs, reverse cholesterol transport is induced which protects myelin-phagocytosing cells from elevated intracellular free cholesterol and oxysterol-induced toxicity (26). In the brain, LXR β is ubiquitously expressed, whereas LXR α expression is largely restricted to infiltrating macrophages and microglia (14, 15).

We found LXR α expression in active lesions to be mainly present in HLA-DR⁺ cells. Likewise, LXR β expression was observed in HLA-DR⁺ cells and in perilesional astrocytes (data not shown). Though both isoforms are expressed by phagocytes, it appears that LXR α , at least at mRNA level, is the dominant driver behind LXR signaling in macrophages (27) which is also evidenced by our *in vitro* data (fig. 1). However, it is likely that due to translational and/or post-translational regulation the protein expression ratio differs from the gene expression ratio. In line herewith, we show that the difference in the expression level of LXR α and LXR β is less clear on protein level in acute MS lesions (fig. 3). Microarray analysis of myelin-laden rat macrophages showed that the expression of LXR response gene *ABCA1* was significantly upregulated compared to non-myelin treated cells (21). In concordance, we found that *ABCA1* is induced in both myelin-treated human monocyte-derived macrophages and active MS lesions. In summary, based on the observation that downstream targets of LXRs are highly upregulated in myelin-laden phagocytes it is likely that LXRs are activated upon myelin digestion in active MS lesions.

Myelin contains various lipids and oxysterols that can influence macrophage function. Recently, we demonstrated that myelin phagocytosis alters macrophage phenotype in rat macrophages through activation of LXRs (21). Therefore, we hypothesized that the uptake of myelin and the subsequent formation of LXR ligands results in the activation of LXRs in phagocytes in active MS lesions. We measured (oxy)sterols present in myelin such as desmosterol, 24SOHC and 27OHC that are known to potently activate LXRs (28-31). After myelin phagocytosis, myelin is processed by the phagocyte, possibly generating cholesterol oxidation products, such as oxysterols. We found that five days after uptake of myelin by macrophages, intracellular myelin levels start to decrease and the levels of the cholesterol metabolite 27OHC, but not 24SOHC and desmosterol, are significantly elevated. Taken together, these results indicate

that LXR ligands are present in human myelin, and that after myelin processing, 27OHC is one of the major LXR ligands that is formed.

The amount of 27OHC present *in vitro* in macrophages after myelin phagocytosis activates both LXR-isoforms with a higher affinity for LXRA (29, 32). Exposing macrophages to 27OHC resulted, very similarly to myelin, in upregulation of *LXRA*, and LXR-response genes *ABCA1* and *ABCG1*. Based on these data, we speculate that initially LXRs are activated by ligands present in myelin (e.g. 24SOHC, 27OHC and desmosterol), while during later stages also LXR ligands that are generated after myelin processing contribute to LXR activation.

Collectively, based on the observation that downstream targets of LXRs are upregulated in myelin-laden phagocytes in active MS lesions it is conceivable that LXRs are activated by ligands present in myelin. Moreover, 27OHC is the major LXR ligand that is formed after myelin processing and the levels of 27OHC that are generated are capable of upregulating LXR downstream targets in phagocytes indicating that 27OHC is, at least in part, responsible for activation of LXRs in MS lesions. Although myelin is very stable in content, it cannot be excluded that differences in myelin composition between and within individuals (e.g. different anatomical CNS regions) may modulate the conversion of cholesterol to 27OHC. LXRs are of great importance in regulating cholesterol homeostasis and protect cells from elevated intracellular free cholesterol and oxysterol-induced toxicity (26). More importantly, LXRs have been shown to inhibit inflammatory gene expression and stimulate remyelination (16, 17, 33, 34) underscoring their significance as important regulators in MS pathogenesis. This notion is highlighted in a recent study in which a mutation was found in the *LXRA* gene in familial MS (35). The clinical disease progression and severity for mutant *LXRA* carriers is evidenced by its rapid progression and severity. In this study, the authors suggest that the p.Arg415Gln mutation, located in the ligand binding domain, prevents LXR activation by abrogating heterodimerization between LXR and RXR, resulting in loss of function. Because of the oxysterols present in myelin and the formation of cholesterol oxidation products, it is likely that myelin-laden phagocytes in MS are at least in part modulated by a myelin-mediated activation of LXRs, providing an intriguing hypothesis for the LXR-controlled self-limiting nature of MS lesion development.

Acknowledgements

We are grateful to all individuals who participated in this study. We thank A. Kerksiek for the sterol analysis and K. Wauterickx for technical assistance. This work was supported by Agentschap voor Innovatie van Wetenschap en Technologie (IWT) (Grant 131086) and Fonds voor Wetenschappelijk Onderzoek (FWO) (Grants 1506916N & 1512314N and 1264114N).

References

1. Bar-Or A, Oliveira EM, Anderson DE, Hafler DA. Molecular pathogenesis of multiple sclerosis. *J Neuroimmunol.* 1999;100(1-2):252-9.
2. Hendriks JJ, Teunissen CE, de Vries HE, Dijkstra CD. Macrophages and neurodegeneration. *Brain Res Brain Res Rev.* 2005;48(2):185-95.
3. Barnett MH, Henderson AP, Prineas JW. The macrophage in MS: just a scavenger after all? *Pathology and pathogenesis of the acute MS lesion. Mult Scler.* 2006;12(2):121-32.
4. Bogie JF, Stinissen P, Hendriks JJ. Macrophage subsets and microglia in multiple sclerosis. *Acta Neuropathol.* 2014;128(2):191-213.
5. Kotter MR, Zhao C, van Rooijen N, Franklin RJ. Macrophage-depletion induced impairment of experimental CNS remyelination is associated with a reduced oligodendrocyte progenitor cell response and altered growth factor expression. *Neurobiol Dis.* 2005;18(1):166-75.
6. Schwab ME. Nogo and axon regeneration. *Curr Opin Neurobiol.* 2004;14(1):118-24.
7. Morell P QR. Characteristic Composition of Myelin. *Basic Neurochemistry: Molecular, Cellular and Medical Aspects 6th edition.* Philadelphia: Lippincott-Raven; 1999.
8. Saher G, Brugger B, Lappe-Siefke C, Mobius W, Tozawa R, Wehr MC, et al. High cholesterol level is essential for myelin membrane growth. *Nat Neurosci.* 2005;8(4):468-75.
9. Spady DK, Dietschy JM. Sterol synthesis in vivo in 18 tissues of the squirrel monkey, guinea pig, rabbit, hamster, and rat. *J Lipid Res.* 1983;24(3):303-15.
10. van de Kraats C, Killestein J, Popescu V, Rijkers E, Vrenken H, Lutjohann D, et al. Oxysterols and cholesterol precursors correlate to magnetic resonance imaging measures of neurodegeneration in multiple sclerosis. *Mult Scler.* 2014;20(4):412-7.
11. Teunissen CE, Dijkstra CD, Polman CH, Hoogervorst EL, von Bergmann K, Lutjohann D. Decreased levels of the brain specific 24S-hydroxycholesterol and cholesterol precursors in serum of multiple sclerosis patients. *Neurosci Lett.* 2003;347(3):159-62.
12. Karrenbauer VD, Leoni V, Lim ET, Giovannoni G, Ingle GT, Sastre-Garriga J, et al. Plasma cerebrosterol and magnetic resonance imaging measures in multiple sclerosis. *Clin Neurol Neurosurg.* 2006;108(5):456-60.
13. Zhao C, Dahlman-Wright K. Liver X receptor in cholesterol metabolism. *J Endocrinol.* 2010;204(3):233-40.
14. Fan X, Kim HJ, Bouton D, Warner M, Gustafsson JA. Expression of liver X receptor beta is essential for formation of superficial cortical layers and migration of later-born neurons. *Proc Natl Acad Sci U S A.* 2008;105(36):13445-50.
15. Joseph SB, Bradley MN, Castrillo A, Bruhn KW, Mak PA, Pei L, et al. LXR-dependent gene expression is important for macrophage survival and the innate immune response. *Cell.* 2004;119(2):299-309.

16. Joseph SB, Castrillo A, Laffitte BA, Mangelsdorf DJ, Tontonoz P. Reciprocal regulation of inflammation and lipid metabolism by liver X receptors. *Nat Med.* 2003;9(2):213-9.
17. Ghisletti S, Huang W, Ogawa S, Pascual G, Lin ME, Willson TM, et al. Parallel SUMOylation-dependent pathways mediate gene- and signal-specific transrepression by LXRs and PPARgamma. *Mol Cell.* 2007;25(1):57-70.
18. Boven LA, Van Meurs M, Van Zwam M, Wierenga-Wolf A, Hintzen RQ, Boot RG, et al. Myelin-laden macrophages are anti-inflammatory, consistent with foam cells in multiple sclerosis. *Brain.* 2006;129(Pt 2):517-26.
19. Bogie JF, Stinissen P, Hellings N, Hendriks JJ. Myelin-phagocytosing macrophages modulate autoreactive T cell proliferation. *J Neuroinflammation.* 2011;8:85.
20. Bogie JF, Jorissen W, Mailleux J, Nijland PG, Zelcer N, Vanmierlo T, et al. Myelin alters the inflammatory phenotype of macrophages by activating PPARs. *Acta Neuropathol Commun.* 2013;1(1):43.
21. Bogie JF, Timmermans S, Huynh-Thu VA, Irrthum A, Smeets HJ, Gustafsson JA, et al. Myelin-derived lipids modulate macrophage activity by liver X receptor activation. *PLoS One.* 2012;7(9):e44998.
22. Norton WT, Poduslo SE. Myelination in rat brain: changes in myelin composition during brain maturation. *J Neurochem.* 1973;21(4):759-73.
23. Jansen PJ, Lutjohann D, Abildayeva K, Vanmierlo T, Plosch T, Plat J, et al. Dietary plant sterols accumulate in the brain. *Biochim Biophys Acta.* 2006;1761(4):445-53.
24. Lutjohann D, Brzezinka A, Barth E, Abramowski D, Staufenbiel M, von Bergmann K, et al. Profile of cholesterol-related sterols in aged amyloid precursor protein transgenic mouse brain. *J Lipid Res.* 2002;43(7):1078-85.
25. Vanmierlo T, Bogie JF, Mailleux J, Vanmol J, Lutjohann D, Mulder M, et al. Plant sterols: Friend or foe in CNS disorders? *Prog Lipid Res.* 2015;58:26-39.
26. Yvan-Charvet L, Wang N, Tall AR. Role of HDL, ABCA1, and ABCG1 transporters in cholesterol efflux and immune responses. *Arterioscler Thromb Vasc Biol.* 2010;30(2):139-43.
27. Mangelsdorf DJ, Evans RM. The RXR heterodimers and orphan receptors. *Cell.* 1995;83(6):841-50.
28. Janowski BA, Grogan MJ, Jones SA, Wisely GB, Kliewer SA, Corey EJ, et al. Structural requirements of ligands for the oxysterol liver X receptors LXRalpha and LXRbeta. *Proc Natl Acad Sci U S A.* 1999;96(1):266-71.
29. Fu X, Menke JG, Chen Y, Zhou G, MacNaul KL, Wright SD, et al. 27-hydroxycholesterol is an endogenous ligand for liver X receptor in cholesterol-loaded cells. *J Biol Chem.* 2001;276(42):38378-87.
30. Janowski BA, Willy PJ, Devi TR, Falck JR, Mangelsdorf DJ. An oxysterol signalling pathway mediated by the nuclear receptor LXR alpha. *Nature.* 1996;383(6602):728-31.
31. Forman BM, Ruan B, Chen J, Schroepfer GJ, Jr., Evans RM. The orphan nuclear receptor LXRalpha is positively and negatively regulated by distinct products of mevalonate metabolism. *Proc Natl Acad Sci U S A.* 1997;94(20):10588-93.
32. Zhou G, Cummings R, Li Y, Mitra S, Wilkinson HA, Elbrecht A, et al. Nuclear receptors have distinct affinities for coactivators: characterization by fluorescence resonance energy transfer. *Mol Endocrinol.* 1998;12(10):1594-604.
33. Castrillo A, Joseph SB, Marathe C, Mangelsdorf DJ, Tontonoz P. Liver X receptor-dependent repression of matrix metalloproteinase-9 expression in macrophages. *J Biol Chem.* 2003;278(12):10443-9.

34. Meffre D, Shackleford G, Hichor M, Gorgievski V, Tzavara ET, Trousson A, et al. Liver X receptors alpha and beta promote myelination and remyelination in the cerebellum. *Proc Natl Acad Sci U S A*. 2015;112(24):7587-92.
35. Wang Z, Sadovnick AD, Traboulsee AL, Ross JP, Bernales CQ, Encarnacion M, et al. Nuclear Receptor NR1H3 in Familial Multiple Sclerosis. *Neuron*. 2016;90(5):948-54.