

RADIANT PAVILION



26 August—
3 September 2017

Melbourne Contemporary Jewellery
and Object Biennial

radiantpavilion.com.au



NORTH MELBOURNE

NORTH MELBOURNE

QUEEN VIC MARKET

FLAGSTAFF GARDENS

DOCKLANDS

FLAGSTAFF

LITTLE LONSDALE ST

LONSDALE ST

LITTLE BOURKE ST

BOURKE ST

LITTLE COLLINS ST

COLLINS ST

FLINDERS LANE

FLINDERS ST

LENSBERRY ST

VICTORIA ST

ABBOTSFORD ST

HAWKE ST

RODEN ST

RAILWAY PLACE

LA TROBE ST

SPENCER ST

KING ST

WILLIAM ST

QUEEN ST

CURRIE ST

ARDEN ST

ERROL ST

LEVESON ST

COURTNEY ST

BLACKBURN ST

WRECKYHILL ST

CHETWYND ST

RAGLAN ST

ELM ST

65

68

18

79

80

22,
30,
42,
61

CBD & NORTH MELBOURNE

CARLTON

CARLTON GARDENS

GERTRUDE ST

VICTORIA PARADE

ALBERT ST

FITZROY GARDENS

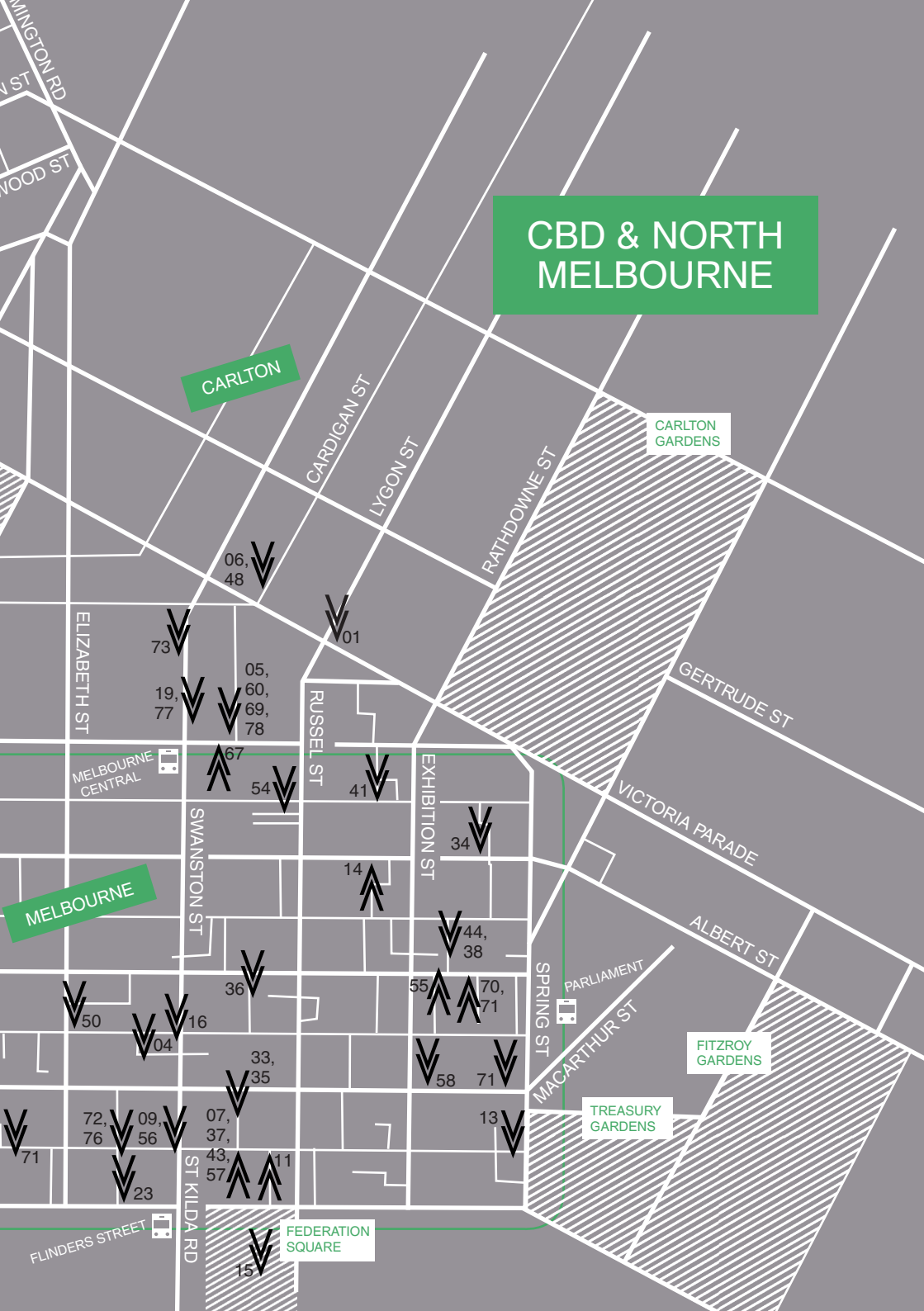
TREASURY GARDENS

FEDERATION SQUARE

FLINDERS STREET

MELBOURNE

MELBOURNE CENTRAL



NORTHSIDE

BRUNSWICK

HOLDEN ST

PRINCES PARK

NORT

PARKVILLE

ROYAL PDE

CARLTON NORTH

ROYAL PARK

FLEMINGTON RD

GATEHOUSE RD

ELGIN ST

NORTH MELBOURNE

GRATTAN ST

CARLTON

CARLTON GARDENS

VICTORIA ST

SWANSTON ST

CARDIGAN ST

LYGON ST

DRUMMOND ST

RATHDOWNE ST



NORTHCOTE

GLENLYON RD

BARKLY ST

64

MERRI

HIGH ST

WESTGARTH

WESTGARTH ST

H FITZROY

EDINBURGH GARDENS

YARRA BEND PARK

CLIFTON HILL

FAIRFIELD

ALEXANDRA PDE

ABBOTSFORD

VICTORIA PARK

JOHNSTON ST

COLLINGWOOD

FITZROY

ST HELIERS ST

GERTRUDE ST

LANGRIDGE ST

NICHOLSON ST

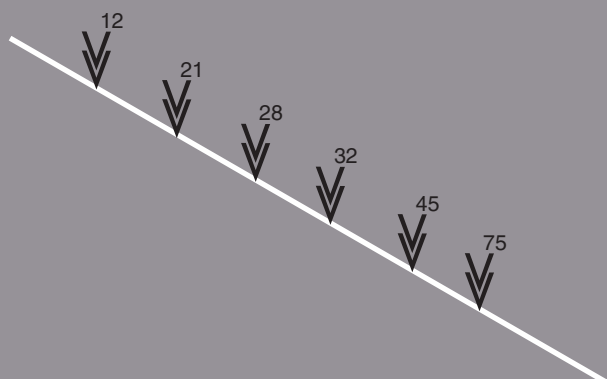
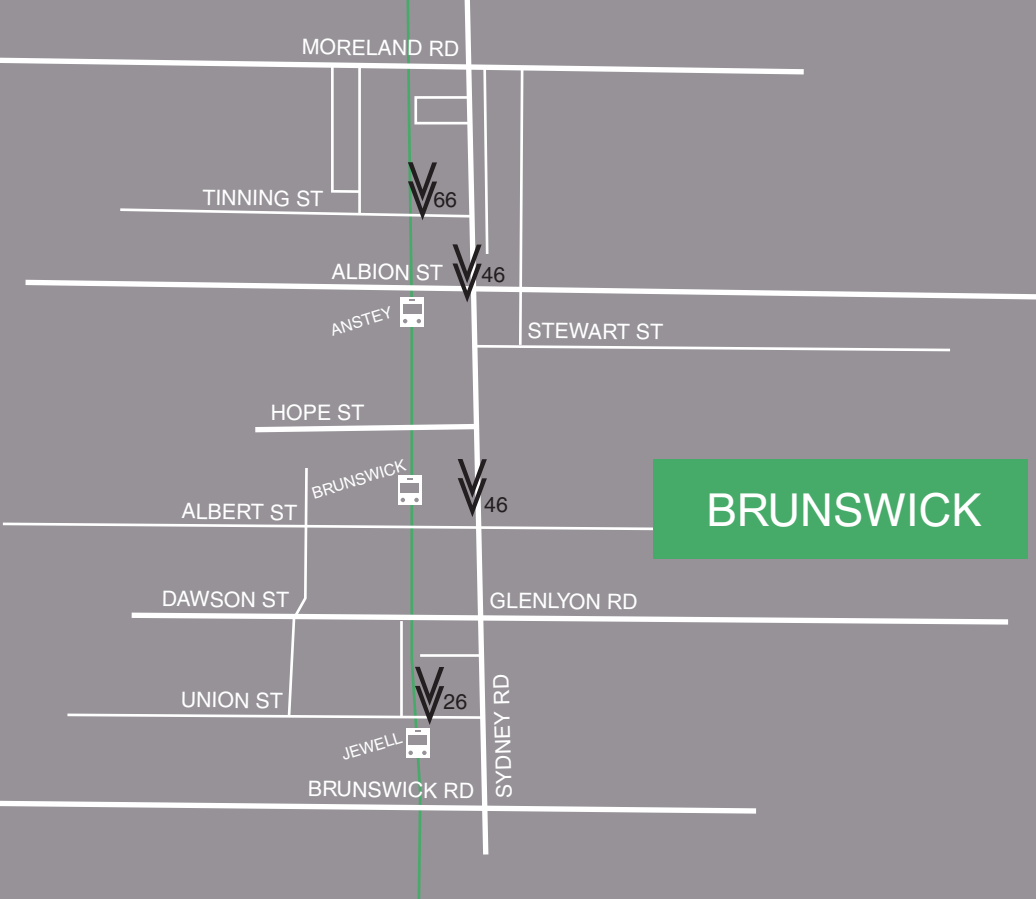
WELLINGTON ST

HOODLE ST

SMITH ST

BRUNSWICK ST

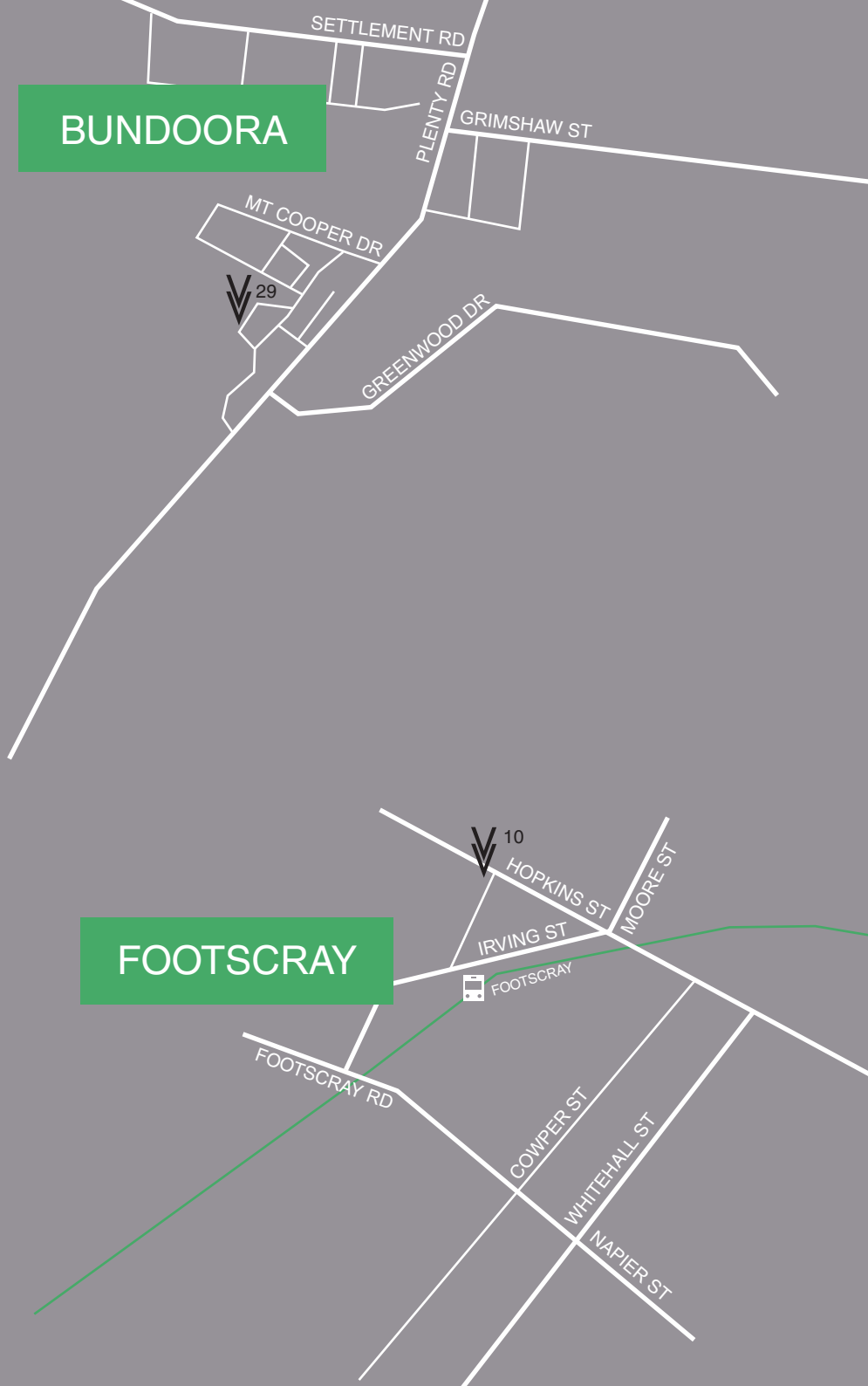
NICHOLSON ST



BUNDOORA



FOOTSCRAY



PROGRAM

01 **2483 – Melbourne Tailoresses' Union Triptych**

Artist/s: Justine Fletcher

2483 – Melbourne Tailoresses' Union Triptych is comprised of 2483 pendants each representing a name in the 1882–83 Melbourne Tailoresses' Strike Book.

📍 **Victoria Trades Hall Council Building**

Corner Victoria & Lygon St, Carlton South
28 August – 1 September, Mon–Fri 10am–4pm
Opening: Mon 28 August 4–7pm

02 **4 by 5**

Artist/s: Gemma Grace, Lisa Lubbock, Philip Monk, Ann Welton & Robyn Wilson

Five emerging jewellers showcase a collection of work inspired by the shifting seasons and Melbourne's obsession with all things black.

Zedi

109 Moor St, Fitzroy
26 August–3 September, Tue–Fri 10am–6pm,
Sat 9am–5pm, Sun 11am–5pm
Opening: Fri 25 August, 5.30–8pm



a.

03 **Anything imagined can be worn / how to wear it!**

Artist/s: Helen Aitken–Kuhnen, Johannes Kuhnen, Taweesak Molsawat, Zoe Brand, Jo Hawley, Kath Inglis, Melissa Cameron, Larah Nott, Mio Kuhnen, Panjapol Kulpapangkorn

Anything imagined can be worn – in the form of contemporary art jewellery with designer clothing.

Signet Bureau

114 Gertrude St, Fitzroy

Ess. Laboratory

165 Gertrude St, Fitzroy

26 – 27 August, Wed 10am–5pm, Thu 12–4pm

04 **back is front**

Artist/s: Anna Varendorff

back is front presents a series of canvas-less stretcher frames made from brass.

Fort Delta

Shop 59, Capitol Arcade (Basement Lvl)
113 Swanston St, Melbourne (enter via Howey Pl)

3 August – 2 September, Wed–Fri 12–6pm,
Sat 12–4pm

Opening: Thu 31 August, 5–6pm

05 **Beyond Skill**

David Huycke – RMIT University, Gold & Silversmithing Master class

Artist/s: David Huycke

In this master class led by Huycke, participants will be exploring techniques in unconventional ways in search for expressive potential.

RMIT University

Object Based Practice Gold & Silversmithing Studio, Lvl 1, Bldg 2,
124 La Trobe St, Melbourne

28 – 31 August, Mon–Thu 9.30am–4.30pm
Opening: Thu 31 August, 4.30–5.30pm

06 **Bielander/Britton/Minegishi**

Artist/s: David Bielander, Helen Britton & Yutaka Minegishi

Bielander/Britton/Minegishi brings together 3 distinct, respected practices by artists from 3 different countries who share a studio in Munich.

📍 **RMIT Project Space**

Bldg 94, Lvl 2, Rm 1, 23–27 Cardigan St, Carlton

25 August – 28 September, Wed–Fri
10am–5pm, Sat–Sun 12–4pm

Opening: Thu 24 August, 5–7pm

07 **Boring, very boring**

Artist/s: Susan Cohn

What if, what you make is boring, or even worse, very boring. How do you know? The starting point for this work is 'this object is boring'... you decide.

Anna Schwartz Gallery

185 Flinders Lane Melbourne

12 August – 3 September, Tue–Fri 12–6pm,
Sat 1–5pm

08 **Climate of Thought**

Artist/s: Nik Hanton

In this series Nik Hanton has made work that operates within the tenets of Modernism; emphasising clarity, order and the abstraction of concept.

Modern Times

311 Smith St, Fitzroy

26 August – 3 September, Mon–Fri 10am–6pm,
Sat 10am–5pm, Sun 11am–5pm

09 Close to here

Artist/s: Michaela Pegum, Gabbee Stolp,
Sarah Taylor & Cara Johnson

A collection of work by four artists whose
varying material and experiential practices
express their ongoing engagements with the
natural world.

Stephen McLaughlan Gallery

The Nicholas Building, Room 16, Lvl 8,
37 Swanston St, Melbourne

23 August – 9 September, Wed–Fri 1–5pm,
Sat 11am–5pm

Opening: Thu 31 August, 5–7pm

10 Container

Artist/s: Katrina Tyler

Container is a solo show of wearable and
sculptural pieces evoking the beauty, syste-
matic order and quirkiness of Melbourne's
industrial west.

Trocadero Artspace

Suite 1, Lvl 1, 119 Hopkins St, Footscray

30 August – 16 September, Wed–Sat 12–5pm

Opening: Wed 30 August, 6–9pm

Artist talk & drinks: Sat 16 September, 4–6pm

11 Dancing Together: Jane Reilly & Prue Venables

Artist/s: Jane Frances Reilly &
Prue Venables

Jane Frances Reilly and Prue Venables, both
potters and jewellers, present collaborative
metal and ceramic works that interweave
their imaginations.

e.g.etal

Downstairs, 167 Flinders Lane, Melbourne

21 August – 2 September, Mon–Thu
10am–6pm, Fri 10am–7pm, Sat 10am–5pm

Opening: Fri 25 August, 4–7pm

12 Dear Maker

Artist/s: Suse Scholem

An interactive project that collects and presents
stories of the hand made, inviting the public to
write a message to a 'maker' of their choice.

dearmakerexhibition.weebly.com

26 May – 1 December, online 24/7

13 Different Tastes

Artist/s: Sam Mertens

A chance for Radiant Pavilion goers to
experience the joy of sake tasting out of
handmade cups at Hihou.

Hihou

1 Flinders Lane, First floor, Melbourne

28 – 31 August, Mon–Thu 5–7pm

14 drinking about jewellery

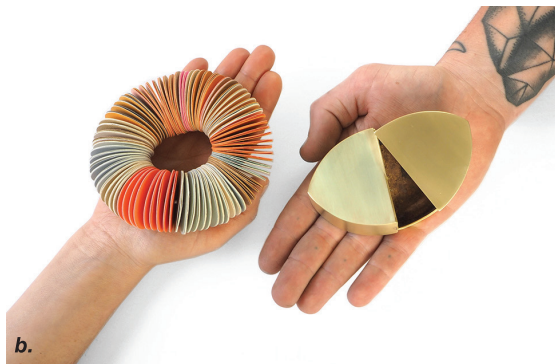
Artist/s: The Jewellers Guild of Greater
Sandringham

Beer, chips, and discussing contemporary
jewellery has been the formula for the Overview
newsletter for over a decade. Join in the
creative process!

Seamstress Bar

113 Lonsdale St, Melbourne

2 September, Sat 3–5pm



15 Equinox

Artist/s: Aurelia Yeomans, Naoko Inuzuka
& Inari Kiuru

The installation, jewellery and objects in
Equinox contemplate darkness and
light as driving forces within our human
experience and the natural world.

No Vacancy Gallery

Federation Square, Tenancy 32,
The Atrium, Melbourne

22 August – 3 September, Tue–Sat 11am–5pm,
Sun 12–5pm

Opening: Sat 26 August, 5–8pm

16 FiveTwelve Open Studio

Artist/s: Michelle Cangiano & Rhys Turner
Open studio and exhibition at FiveTwelve, an
independent jewellery studio located in the
iconic Century Building.

FiveTwelve

The Century Building, Lvl 5, Studio 512,
125 Swanston St, Melbourne

31 August, Thu 12–3pm

2 September, Sat 1–4pm

17 Form & Face

Artist/s: Elise Sheehan & Martha Poggioli

Form & Face is the culmination two artists'

individual investigations of the limitlessness of their preferred mediums.

C3 Gallery

Abbotsford Convent, 1 St Heliers St,
Abbotsford

16 August – 10 September, Wed–Sun

10am–5pm

Opening: Wed 16 August, 6–8pm

18 From C to Z

Artist/s: Zoe Brand & Claire McArdle

When is a work said to be original or a copy?

Brand & McArdle each create a series of work based on the other's initial piece.

1/100 Railway Place

1/100 Railway Place, West Melbourne

27–30 August, Mon–Wed 3–6pm,

Sun 5.30–7.30pm

Opening: Sun 27 August, 5.30–7.30pm



19 Graduate Metal XV

Artist/s: Recent graduates from Australia
and New Zealand

A biennial survey of AU and NZ jewellery and metalsmithing graduates with a continued legacy of celebrating the work of outstanding emerging artists.

First Site

Storey Hall Basement, 344 Swanston St,

Melbourne

22 August – 1 September, Tue–Fri 11am–5pm

Opening: Tue 22 August, 5–7pm

Artist talk: Fri 1 September, 1pm



20 Here & There

Artist/s: Lindy McSwan & Thomas O'Hara

Here & There, an exhibition of shared landscape, of influenced imagination, of two artists who travel here and then there and back to the studio.

Brunswick Street Gallery

Lvl 1 & 2, 322 Brunswick St, Fitzroy

18 – 31 August, Tue–Fri 10am–8pm, Sat–Sun

10am–6pm

Opening: Fri 18 August, 6–9pm

21 Impressions of Radiant Pavilion

Artist/s: Bench (Nellie Peoples,
Katie Stormonth, Clare Poppi &
Emma Clippingdale)

Impressions of Radiant Pavilion kits allow participants to literally take impressions of Radiant Pavilion and display them proudly on their sleeve.

Roaming

Various Radiant Pavilion event locations

25 – 27 August, Fri–Sun 10am–5pm

22 In and Out of Light

Artist/s: Ruby Aitchison & Nell Grant

Light and shadows are choreographed to skim over and accentuate objects and surfaces, things that pass in and out of light.

• The Stables at the Meat Market

2-8 Wreckyn St, North Melbourne

23 August – 3 September, Mon–Sun 11am–5pm

Opening: Tue 29 August, 6–9pm

23 in-between

Artist/s: Lauralai Wilson, Radha Russell,
Michelle Stewart, Katherine Hubble,
Danielle Sturgeon & Lana Scoville

Walk through otherworldly realms and delve

into the in-between. Five makers collaborate to create miniature worlds beneath Flinders Street Station.

The Dirty Dozen

Campbell Arcade (Underground),
Melbourne

26 August – 3 September, Mon–Fri 7am–7pm,
Sat 10am–5pm

24 Inhabit

Artist/s: Amelia Marks, Dunnielle Mina,
Karina Leddin & Kellie Joy Barnes

Works destined to occupy the landscape of the body are recontextualised to adorn this vacant laneway, creating a surprising urban sanctuary.

The Alley

(the alley on the right side of the building)
200 Argyle St, Fitzroy

26 August – 3 September, Daily 11am–5.30pm
Opening: Fri 1 September, 3–5.30pm

25 Intercept

Artist/s: Minna Loft & Birgitta Helmersson

Minna Loft and Birgitta Helmersson explore the intersection between clothing and jewellery through manipulating fabric to create engaging forms.

Birgitta Helmersson Studio/Shop

77 Johnston St, Collingwood

26 August – 2 September, Wed–Fri 11am–6pm,
Sat 11am–5pm, Sun 12–3pm

Workshop: Sun 27 August, 12–3pm

Bookings: <https://www.eventbrite.com/e/intercept-cloth-jewellery-workshop-tickets-35952294280>

26 Island Welcome

Artist/s: Jane Bowden, Michelle Cangiano,
Jess Dare, Nicky Hepburn, Kath Inglis,
Vicki Mason, Belinda Newick & Lauren
Simeoni

Island Welcome: Eight Australian contemporary jewellers make a single welcome garland in response to current Australian immigration & refugee policy.

↳ Brunswick Arts Space @ NeoMetro

(enter from Jewell Station car park)

15A Union St, Brunswick

26 August – 3 September, Mon–Fri 11am–4pm,
Sat–Sun 1–4pm

Opening: Sun 3 September, 2–4pm

27 It could go either way

Artist/s: Natasha Sutila & Rebecca Thomas

A meeting of two artistic practices in which pattern, repetition and componentry play a significant part.

↳ St Heliers Street Gallery

1 St Heliers St, Abbotsford

4 August – 3 September, Mon–Thu 8am–4pm,
Fri 8am–8pm, Sat 8am–4pm, Sun 8am–4pm

28 Jewellers Behaving Badly

Artist/s: Anna Gray

A roaming locket – a cache of jewellers' private and public moments. Providing comfort of community and disguise to the wearer's Radiant (mis)adventures.

Roaming

Various Radiant Pavilion event locations

28 August – 3 September, Mon–Sun 10am–1pm

29 Keepsake

Artist/s: Sim Luttin & Kirrily Hammond

An exhibition exploring documented moments in time—traces captured between night and day, work and home, travelling from one place to another.

↳ Bundoora Homestead Art Centre

7–27 Snake Gully Drive, Bundoora

9 August – 22 October, Wed–Fri 11am–4pm,
Sat–Sun 12–5pm

Opening: Sat 26 August, 2–4pm

Artist Talk: Sat 26 August, 3pm



30 **Labour Exchange**

Artist/s: Renée Ugazio

100 jewellery works carved out of a jeweller's bench are up for trade. Come take a work, and trade it for something you've made, a skill, or activity!

📍 **The Stables at the Meat Market**

2-8 Wreckyn St, North Melbourne

23 August – 3 September, Mon–Sun 11am–5pm

Opening: Tue 29 August, 6–9pm



f.

31 **Left and Right**

Artist/s: Brendan Adair–Smith, Jane Bowden, Georgie Brooks, Michelle Cangiano, Yu Fang Chi, Laila Marie Costa, Anna Davern, Bin Dixon Ward, Jeanette Dyke, Amanda Fox, Yuri Fujiyama, Emma Grace, Darren Harvey, Nicky Hepburn, Linda Hughes, Kath Inglis, Pennie Jagiello, Jin Ah Jo, Fiona Kwong, Kathryn Leopoldseder, Coconut Lu, Jennifer Martin, Victoria Mathews, Romy Mittelman, Belinda Newick, Sabine Pagan, Cass Partington, Peaches + Keen, Amy Renshaw, Sarah Ross, Rhys Turner, Katrina Tyler, Zoe Jay Veness, Kathryn Wardill, Leonie Westbrook & Vanessa Williams

Studio Ingot will present 100 pairs of earrings in a survey of styles and solutions. Found object to precious gem, conventional to the surprising.

📍 **Studio Ingot**

Shop 2, 234 Brunswick St, Fitzroy

25 August – 9 September, Viewable 24/7

Opening: Fri 1 September, 5–7pm

32 **Liminal Intervention: Having a jewellery moment**

Artist/s: Fran Carter & Caroline Thomas

Our evolving project explores the mysteries of the creative process, celebrating the idea that inspiration often lurks in the most unlikely places.

The Streets of Melbourne

26 August – 3 September

33 **Linda Hughes**

Artist/s: Linda Hughes

In this exhibition Linda Hughes examines how the occurrence of stripes in historic paintings can be translated into contemporary jewellery.

Craft

Watson Place, off Flinders Lane, Melbourne

17 August – 7 October, Mon–Fri 11am–6pm, Sat 10am–5pm

Opening: Sat 26 August, 5–7pm

Artist Talk: Sat 2 September, 12pm

34 **Locked**

Artist/s: Linda Blair, Emily Copp, Elizabeth Mitchell, Fiona Meller, Margarita Sampson & Albert Tse

Locked investigates ideas of the unseen and the forbidden both in the political and personal realm – presented by artists of SquarePeg Studios, Sydney.

Lord Coconut

5/38 Lonsdale St, Melbourne

26 August – 3 September, Mon–Fri 11am–6pm

Sat 12–4pm

Opening: Mon 28 August, 5–7pm

35 **Memory + Assembly**

Artist/s: Bianca Mavrick

In *Memory + Assembly*, jeweller and object maker Bianca Mavrick returns to her earliest memories of childhood, exploring the personal and collective migrant experiences of her Greek-Italian family growing up in sub-tropical Queensland.

📍 **Craft**

Watson Place, off Flinders Lane, Melbourne

23 August – 23 September, Mon–Fri 11am–

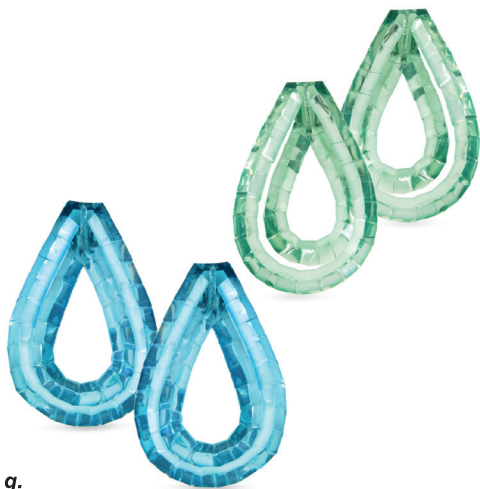
6pm, Sat 10am–5pm
Opening: Sat 26 August, 5–7pm

36 **NEO Cuts**

Artist/s: Melanie Katsalidis
In *NEO Cuts*, Katsalidis explores the case for breaking the rules in lapidary. Unusual and custom cut gems feature in one-off jewellery pieces.

📍 **Pieces of Eight**

28 Russell Place, Melbourne
31 August – 30 September, Fri–Sat 10am–6pm,
Sun 10am–5pm
Opening: Thu 31 August, 6–8pm



g.

37 **New Colony**

Artist/s: Liv Boyle
A swarm has landed. Seeking camouflage in changing environments, insects build exoskeletons from microplastics found in their polluted tidal habitat.

📍 **Workshop 3000**

183 Flinders Lane, Melbourne
26 August – 3 September, Viewable 7am – 5pm

38 **New Jewellery from China**

Artist/s: Bifei Cui, Xiang Dai, Xin Guo, Xiaowang Huang, Xiao Liu, Jie Sun, Fei Teng, Kezhen Wang, Li Liang, Mian Wu
Gallery Funaki, in collaboration with Professor Norman Cherry, presents an exhibition of new contemporary jewellery from China.

📍 **Gallery Funaki**

4 Crossley St, Melbourne
26 August – 23 September, Mon–Fri 10.30am–5.30pm, Sat–Sun 12–4pm

Opening: Sat 26 August, 6–8pm

39 **Non-Euclidean transformations, beyond object, fluidifying**

Artist/s: Helen Dilkes
Reciprocity between temporal/spatial multiplicities, experience in non-spatial time/duration, and a sense of this being spatially extended to matter.

📍 **Brunswick Street Gallery**

Lvl 1 & 2, 322 Brunswick St, Fitzroy
1 – 14 September, Tue–Fri 10am–8pm, Sat–Sun 10am–6pm
Opening: Fri 1 September, 6–9pm

40 **Object & Jewellery by Daehoon Kang & Joungmee Do**

Artist/s: Joungmee Do & Daehoon Kang
Combined exhibition presenting a body of contemporary silversmithing and jewellery that illustrates the distinctive and exceptional hybrid qualities.

📍 **Page Two Bookshop**

99 George St, Fitzroy
26 August – 3 September, Sat–Sun 11.30am–4pm

41 **On Purpose**

Artist/s: Natasha Sutula & Michael Wong
By presenting their work in the context of a domestic space, Michael Wong and Natasha Sutula explore how utility affects the reading of an object.

📍 **116 Little Lonsdale St**

116 Little Lonsdale St, Melbourne
26 August – 3 September, Viewable 24/7

42 **Oomph!**

Artist/s: Bin Dixon–Ward & Giulia Giannini–McGauran
Photographs and jewellery by Giulia Giannini–McGauran and Bin Dixon–Ward.

📍 **The Stables at the Meat Market**

2–8 Wreckyn St, North Melbourne
23 August – 3 September, Mon–Sun 11am–5pm
Opening: Tue 29 August, 6–9pm

43 **Over and Over and Over: a making performance**

Artist/s: Susan Cohn, Sam Mertens & Liv Boyle
A Radiant Performance by Robi, showing off making over and over and over.

📍 **Workshop 3000**

183 Flinders Lane, Melbourne
26 August – 3 September, Sun–Mon 12pm–5pm

44 **Paved with Gold**

Artist/s: Kelly McDonald, Sarah Read, Becky Bliss, Vivien Atkinson, Jhana Millers & Caroline Thomas

The myth that a city's streets are paved with gold is a potent one. Lured by its promise NZ's Occupation: Artist have Crossley Street all a-glow...

📍 **Crossley Street**

Crossley Street, Melbourne

26 August – 3 September, Viewable 24/7

Opening: Sat 26 August, 6–8pm



h.

45 **P.D.F.* Exchange**

***Portable Demonstration Facility**

Artist/s: Roseanne Bartley, Ceri Hann & Lynda Roberts

P.D.F. Exchange co-produces a performative and social compendium of jewellery concepts and techniques, with input from a range contemporary jewellers.

📍 **High Top Van**

Roaming

Various Radiant Pavilion event locations

26 August – 3 September, Sun–Mon 6–8pm

46 **Pieces of Place**

Artist/s: Kim Jaeger, Andy Hutson, Emma Grace, Sarah Heyward, Kate Hill &

Lindy McSwan

Using the Brunswick made Hoffman brick as a point of enquiry, six artists will respond to this as a found urban artefact.

📍 **Mr Kitly**

381 Sydney Rd, Brunswick

Brunswick Arts Window Space (viewable 24/7) 681 Sydney Rd, Brunswick

25 August – 9 September, Mon 1–6pm, Wed–Sat 11am–6pm, Sun 10am–5pm

Opening: Fri 25 August, 6–8pm at Mr Kitly

47 **Precious Little**

Artist/s: Wendy Korol

Malleable materials enable me to capture and reveal the immediacy of making. Within the present moment a precious 'jewel' is hidden.

📍 **Junior Space**

65 Smith St, Fitzroy

24 August – 5 September, Tue–Sat 11am–5pm, Sun 12–4pm

Opening: Thu 24 August, 6–8pm

48 **Precisely**

Artist/s: Sue Lorraine

A tribute to the modest and gentle life of my late father, architect and artist Hans Lorraine, a celebration of a precise and creative bequest.

📍 **RMIT Spare Room**

Building 94, Lvl 2, Rm 1

23–27 Cardigan St, Carlton

25 August – 28 September, Wed–Fri

10am–5pm, Sat–Sun 12–4pm

Opening: Thu 24 August, 5–7pm

Artist talk: Fri 25 August, 1.30–2.15pm

49 **Puzzle Time**

Artist/s: Annie Gobel

An interactive exhibition that invites you to have a play with Annie Gobel's sets of 'jigsaw puzzles' that are also magnetic brooches.

📍 **Arena Store**

222 Smith St, Collingwood

26 August – 3 September, Tue–Fri 11am–6pm,

Sat 10am–6pm, Sun 10am–5pm



i.

50 **Replica Replica**

Artist/s: Maria Natoli & Anita Crowther
Focusing on concepts of replication and material value, *Replica Replica* reimagines Georgian paste jewellery but with a subversive modern twist.

Klepner's Antique

324 Little Collins St, Melbourne
26 August – 2 September, Mon–Thu
10am–5pm, Fri 10am–6pm, Sat 11am–3pm

51 **REFLECTOR|RECEPTOR: Narratives of Experience**

Artist/s: Nicole Polentas
REFLECTOR|RECEPTOR seeks to examine the ways in which the crafted object can transform lived experience into narrative forms.

Red Gallery

157 St Georges Rd, North Fitzroy
30 August – 17 September, Wed–Sun
10am–5pm
Opening: Wed 30 August, 6–8pm

52 **Salt**

Artist/s: Brooke Coutts-Wood
Salt is a playful intervention of objects that bring into focus the visual and tactile senses experienced in the ritual of dining.

Pinotta Bar & Table

32 Best St, Fitzroy North
30 August – 3 September, Wed–Sun 12–10pm

53 **Shared Concerns**

Artist/s: Melissa Cameron, Aran Galligan, Caitie Sellers, Daniel DiCaprio, Jill Hermans, Kaori Juzu, Lynn Batchelder & Vincent Pontillo-Verrastro

Shared Concerns is an exhibition by a diverse group of artists who shared a winter residency at Penland, in the mountains of North Carolina.

Bini Gallery

62 Smith St, Collingwood
25 August – 15 September, Mon–Fri
10am–5.30pm, Sat 11am–5pm, Sun 12–4pm
Opening: Fri 25 August, 5.30–8pm

54 **Steel Lives**

Artist/s: Inari Kiuru & Jin Ah Jo
Steel lives: A shared celebration of the astonishing expressive, material and emotional possibilities this strong and often unpredictable metal holds.

No Vacancy QV

34–40 Jane Bell St, Melbourne
22 August – 3 September, Tue 11am–6pm,
Wed–Fri 10am–5pm, Sat 11am–5pm,
Sun 12–5pm
Opening: Thu 31 August, 6–8pm

55 **Sui-mon (Water-mark)**

Artist/s: Naoko Inuzuka & Emi Fukuda
In the time of people's constant relocations, two Japanese-born artists endeavor to visually and conceptually capture the fluidity of water in the form of wearable objects.

Self Preservation

70 Bourke St, Melbourne
25 August – 7 September, Mon–Fri 7.30–12am,
Sat–Sun 8–12am
Opening: Mon 28 August, 5–7pm



j.

56 **Tacit Recollection**

Artist/s: Yu Fang Chi, Monika Brugger, Yu Chun Chen, Carole Deltenre, Yuni Kim Lang & Lauren Kalman

Tacit Recollection represents the ambiguous identity and experience of the speechless body sensation, invisible trauma and memory.

BLINDSIDE

Level 7, Room 14, The Nicholas Building,
37 Swanston St, Melbourne
23 August – 9 September, Tue–Sat 12–6pm
Opening: Sat 26 August, 6–8pm
Artist Talk: Sat 26 August, 5pm

57 **Talismans for Travel at Adelphi Hotel**

Artist/s: Amy Renshaw, Anita Crowther, Brad Bird, Cinnamon Lee, Courtney Jackson, Daniel Serra, Emma Jane Donald, Jose Marin, Julia deVill, Julia Storey, Laura Eyles, Liv Boyle, Mel Young, Natalia Miosz-Piekarska, Phoebe Porter, Sarah Heyward, Vikki Kassioras

Contemporary jewellery designed to provide protection, luck and guidance for the traveller, exhibited at the Adelphi Hotel.

Adelphi Hotel

187 Flinders Lane, Melbourne
21 August – 2 September

58 Talking Points

Australian National University, School of Art and Design

Artist/s: Current students, alumni and visiting scholars from ANU School of Art & Design, Gold & Silversmithing workshop

Presenting the dialogues and concerns carried within the works of students, graduates & visitors of Gold & Silversmithing at ANU over the last 5 years.

Australian National University House

Lvl 11, 52 Collins St, Melbourne

29 August – 2 September, Daily 10.30am–6pm

Opening: Tue 29 August, 5.30–7.30pm

To be opened by Professor the Hon Gareth Evans AC QC

59 The BOSS – The Best of Student Silversmithing

Artist/s: Alumni & Students of Melbourne Polytechnic

The BOSS is a curated exhibition of the Best of Student Silversmithing work from Melbourne Polytechnic Jewellery and Object Design students.

Melbourne Polytechnic Fairfield Library

Ground Floor, Bldg Q, Yarra Bend Rd
Fairfield

23 August – 6 September, Tue–Wed 8.30am–8pm, Thu 8.30am–6pm, Fri 8.30am–5pm

Opening: Wed 30 August, 4–6pm

60 The Grid Reimagined

Artist/s: Bin Dixon–Ward

The grid is reimagined from a rigid geometric form, which is transformed into jewellery with a unique capacity move and unfold over the body.

Site 8

RMIT School of Art

Level 2, Building 2, Bowen Ln, Melbourne

24 August – 1 September, Mon–Sat 1–5pm

Opening: Thu 24 August, 5–8pm

61 The material thought

Artist/s: Sara Gackowska, Julia Obermaier, Paul Adie, Ruby Aitchison & Katie Collins

An exhibition of five local and international emerging jewellers, each reflecting on material's regularity or variability through making processes.

The Stables at the Meat Market

2-8 Wreckyn St, North Melbourne

23 August – 3 September, Mon–Sun 11am–5pm

Opening: Tue 29 August, 6–9pm

62 The Posterzine Project

Artist/s: Zoe Veness & Sarah Jones
The Posterzine Project brings together stories and anecdotes by Hobart-based jewellery artists in the form of a folded poster.

Studio Ingot

Shop 2, 234 Brunswick St, Fitzroy
26 August – 2 September, Sat 10.30am–5pm

63 The trees have names

Artist/s: Vicki Mason

Vicki Mason's solo exhibition seeks to remind us of the interconnectedness of urban environments and the trees that occupy these spaces.

Studio Ingot

Shop 2, 234 Brunswick St, Fitzroy
25 August – 9 September, Mon–Fri
10.30am–5.30pm, Sat 10.30am–5pm
Opening: Fri 1 September, 5–7pm

64 Three Spoons Full

Artist/s: Robyn Wernicke

The humble spoon is presented in conjunction with a series of 18th century button hooks.

Small Space Jewellery

365A St Georges Rd, Fitzroy North
26 August – 16 September, Wed–Fri
10am–5.30pm, Sat 10am–4pm
Opening: Wed 30 August, 3–5pm



65 Tidal Detritus

Artist/s: Regina Middleton
Regina Middleton seeks and collects unexpected 'treasures' from along Victoria's Surf Coast and transforms them into objects destined for adornment.

☛ Guild of Objects

690 Queensberry St, North Melbourne
26 August – 2 September, Wed–Sat 10am–4pm
Opening: Sat 2 September, 10am–12pm

66 Time:Form

Artist/s: Christopher Earl Milbourne, Ruby Aitchison, Khyran Randall–Demillo, Anastasia Kandaraki, Demitra Ryan–Thomlousis & Poly Nikolopoulou
Through the eyes of the maker, the conditioning of the surfaces of objects and substrates symbolise the interventions made by time and the atmosphere.

Tinning Street Presents

Lot 5, 29 Tinning St, Brunswick
21 August – 3 September, Tue–Sun 11am–5pm
Opening: Thu 24 August, 6–9pm

67 Tulk Rail

Artist/s: Mark Edgoose
Placing work in a hospitality setting immediately raises ambiguity about whether the work is on display or part of the space.

☛ Mr Tulk

328 Swanston St, Melbourne
21 August – 4 September, Mon–Thu 7am–5pm, Fri 7am–8pm, Sat–Sun 9am–4pm

68 Up North

Artist/s: Claire McArdle
A diary through objects of time spent in Blönduós, Iceland. An investigation of how the landscape and people influence each other.

Galleriesmith Project Space

170–174 Abbottsford St, North Melbourne
31 August – 18 September, Thu–Sat 11am–5pm
Opening: Sat 2 September, 4–6pm

69 URBAN A–WEAR–NESS

Artist/s: Chris Massey, Eli Giannini & Susan Buchanan, Jana Roman, Kate Wischusen, Katie Collins, Lindy McSwan, Pamela Chan, Sarah Jones, Thomas O'Hara & Zoe Veness.
Grand old man, Ormond, made splendid with fine adornment, now seen anew.

☛ RMIT

Francis Ormond statue, RMIT
Cnr Latrobe St & Bowen Lane, Melbourne
2 September, Sat 12–5pm

70 UTTER

Artist/s: Stella Chrysostomou, Andrea Daly & Peter Deckers
UTTER is an exchange project between Peter Deckers, Andrea Daly and Stella Chrysostomou with 'chatter' dialogues between their jewellery objects.

The Paperback Bookshop

60 Bourke St, Melbourne
26 August – 3 September, Mon–Thu 9.30am–10pm, Sat 11am–11pm, Sun 12–7pm

71 VISITORS

Artist/s: Benedikt Fischer & Benjamin Woods, Manon van Kouswijk & Noon Passama, Clementine Edwards & Jantje Fleischhut, Flora Vagi & Meredith Turnbull, Rebecca Thomas & Debris Facility
Curators: Manon van Kouswijk & Meredith Turnbull

VISITORS is a group project featuring 10 local and International artists presented in pairs across 5 Melbourne gallery spaces for contemporary art.

☛ Sutton Gallery

254 Brunswick St, Fitzroy,
Tue–Sat 11am–5pm

Sarah Scout Presents

Lvl 1, 12 Collins St, Melbourne
Wed–Sat 12–5pm

Daine Singer

Basement 325 Flinders Lane, Melbourne
Wed–Fri 12–5pm, Sat 12–4pm

Neon Parc

1/53 Bourke St, Melbourne, Wed–Fri 11am–5pm, Sat 12–5pm 26 August – 2 September

72 Voveo: How to make a promise

Artist/s: Raquel Bessudo (MX), Louiseann King, Vicki Mason, Clare Poppi, Gina Rophia, Mia Straka (NZ), This Means That (TH), Alice Whish and Keri–Mei Zagrobela (NZ)
Curator: Kevin Murray

Social objects for making commitments by jewellers from Australia, New Zealand, Thailand and Mexico.

☛ Melbourne City Library

253 Flinders Lane, Melbourne
24 August – 3 September, Mon–Fri 8am–8pm, Sat 10am–5pm, Sun 12–5pm
Opening: Thu 31 August, 2–4pm

73 W.E.McMillan Collection – 1980's RMIT Gold and Silversmithing

Artist/s: Emeritus Professor Robert Baines
In this lecture, Emeritus Professor Robert Baines will delve into the expanding practice of Gold & Silversmithing students of the 1980s.

RMIT University

Building 80, Level 2, Room 7

Swanston Academic Building, 427–433

Swanston St, Melbourne

30 August, 6–7pm

74 WAnt: contemporary jewellery from WA

Artist/s: Elizabeth Hawkey, Jenny Crisp, Barbara Cotter, Max Ball, Sultana Shamshi, Jacquie Sprogoe, Annika Hauschild, Fatemeh Boroujeni, Jill Parnell, Katrina Virgona, Blandine Halle, Bethamy Linton, Lynndy Young, Alister Yiap, Alexandra D'Ulisse & Betty McKeough

16 jewellers – from recent graduates to established artists – showcase the variety and quality of contemporary studio practice in Western Australia.

Brunswick Street Gallery

Lvl 1 & 2, 322 Brunswick St, Fitzroy

19 – 31 August, Tue–Fri 10am–8pm, Sat–Sun 10am–6pm

Opening: Fri 18 August, 6–9pm

75 Wearable Relics: Colours and Symbols in the Digital Era

Artist/s: Sun–Woong Bang

I investigate how new forms of jewellery can be created by combining traditional jewellery techniques and digital technologies.

sunbang.com.au

26 August – 3 September, Viewable 24/7

76 Without A Jewel

Artist/s: Zoe Robertson, Renée Ugazio, Anneleen Swillen & Paulina Rodete
Curators: Victoria Cleland & Judith Torzillo

Four artists who use performance and installation to discuss value, context, adornment, wearability and expectation.
Instagram: @withoutajewel

☛ Melbourne City Library Gallery

253 Flinders Lane, Melbourne

2 August – 2 September, Mon–Thu 8am–8pm, Fri 8am–6pm, Sat 10am–5pm, Sun 12–5pm

Drinks & discussion: Thu 31 August, 2–4pm

77 Wondernamel : Decade

Artist/s: Alumni & Student of RMIT Gold & Silversmithing

Curator: Dr Kirsten Haydon

The artists exhibiting in Wondernamel 2017 work in diverse ways making original work in the area of enamelling.

First Site Gallery

Storey Hall Basement 344 Swanston St, Melbourne

22 August – 1 September, Tue–Fri 11am–5pm

Opening: Tue 22 August, 5–7pm

Artist talk: Fri 1 September, 1pm

78 Wood you?

Yutaka Minegishi – RMIT University, Gold & Silversmithing Master class

Artist/s: Yutaka Minegishi

Yutaka Minegishi will lead participants to use wood and work only with the reductive and subtractive techniques to carve and strip back material.

RMIT University

Object Based Practice Gold & Silversmithing Studio

Lvl 1, Bldg 2, 124 La Trobe St, Melbourne

28 – 31 August, Mon–Thu 9.30am–4.30pm

Opening: 31 August, 4.30–5.30pm

79 Working Holiday

Artist/s: Nina Baker

I went to the Netherlands for a year and challenged my making habits, with intuitive rigour and attitude; this is some new work.

Gallery Voltaire

14 Raglan St, North Melbourne

25 August – 3 September, Wed–Sun 11am–6pm

Opening: Sat 26 August, 8–10pm

80 XL→XS

Artist/s: Studio 513 (Katie Collins, Bin Dixon–Ward & SUPERPLEASED (Sue Buchanan & Eli Giannini))

Studio 513 brings to Radiant Pavilion a conversation about the city; how the city influences our work and how the urban environment is experienced.

& Gallery

Water Tank Way

220 Spencer St, Melbourne

12 August – 9 September, Thu–Sun 12–5pm

☛ Venue is wheelchair accessible

PEOPLE'S CHOICE AWARD



Vote for your favourite event at
radiantpavilion.com.au/vote

The winning event will receive \$250 voucher from Koodak Jewellers Supplies.

Koodak is also offering a free showbag to the first 50 visitors to show this map during Radiant Pavilion.
4th Floor, 125 Swanston St, Melbourne 3000

ALLIED EVENT

Radiant Pavilion is proud to partner with RMIT School of Art in presenting **Making OUT**, the 17th biennial conference of the Jewellers and Metalsmiths Group of Australia, 25-27 August 2017, National Gallery of Victoria and RMIT University.

A forum that reflects on the role of making across disciplines, **Making OUT** aims to initiate a dialogue around diverse perspectives on making – as a way of thinking that contributes to ideas; as something that informs and improves how we live; and as an integral element of artistic practice.

makingoutmelbourne.com

Radiant Pavilion would like to thank the artists, curators, collectors and wearers that make up the contemporary jewellery and object community for their continued support, innovation and enthusiasm.
We couldn't exist without you.

We would like to express our gratitude to the 2017 Selection Committee - Anna Davern, Carlier Makigawa & Nicholas Bastin - for their generosity in sharing their knowledge and experience. And thank you to the galleries, organisations, institutions and venues for the time and effort they contribute.

The love and support of our families and friends are what makes Radiant Pavilion possible.

Publicity & PR: Purple Media purplemedia.com.au

Graphic Design: no-clients.com

Image credits:

a. Bielander/Britton/Minegishi

David Bielander, *Cardboard (heart)*, 2015, 18k gold, white gold, 90x80x20mm. Photo: Dirk Eisel

b. FiveTwelve Open Studio

Michelle Cangiano, *Paper bangle*, 2017, paper, elastic thread and glass beads, 50x50x25mm (left) and Rhys Turner, *Brass vessel*, 2016, brass, 50x30x25mm (right). Photo: Michelle Cangiano and Rhys Turner.

c. Graduate Metal XV

Naoko Inuzuka, *I'm saturated*, 2014, copper, sterling silver, 120x150x20mm

d. Here and There

Lindy McSwan, *Vessel Studies*, 2014, cotton rag, water colour, gouache, graphite, Largest vessel 110x55x45mm. Photo: Jeremy Dillon

e. in-between

Lauralai Wilson, *Nautilus*, 2017, silicone, nautilus shell, antique pearls, cotton.

Cover: Zoe Robertson, *flockOmania*, performance, 2016. Photo: Courtesy of the artist.

f. Island Welcome

Jess Dare, *Offerings: Elementary Phuang Malai*, 2015, powder coated brass, cotton thread, 610x380x40mm. Photo: Grant Hancock

g. Left and Right

Kath Inglis, *Rain stud earrings*, 2017, hand cut and dyed PVC. 27x36mm.

h. Precisely

Sue Lorraine, *The apron*, 2017, desk top vinyl, leather and waxed cotton thread. 950x500x90mm. Photo: Grant Hancock

i. REFLECTOR/RECEPTOR

Nicole Polentas, *Prosopon: The Echo*, 2016, sterling silver, copper, poly-putty, alabaster, paint, steel, 140x120x80mm. Photo: Andrew Barcham

j. The BOSS

Ha Than, *Utensils*, 2016, brass. Photo: Andrew Barcham

k. XL → XS

Superpleased, *Catching Light*, 2016, resin, leather. Photo: Gilda Jones

OPENINGS & LIMITED EVENTS

Sat 26 August

Keepsake
2–4pm
Bundoora

Linda Hughes
5–7pm
Melbourne

Memory + Assembly
5–7pm
Melbourne

Equinox
5–8pm
Melbourne

Tacit Recollection
5–8pm
Melbourne

Paved with Gold
6–8pm
Melbourne

New Jewellery from China
6–8pm
Melbourne

Working Holiday
8–10pm
North Melbourne

Sun 27 August

Intercept
12–3pm
Collingwood

From C to Z
5.30–7.30pm
West Melbourne

Mon 28 August

2483 – Melbourne
Tailoresses' Union
Triptych
4–7pm
Carlton South

Locked
5–7pm
Melbourne

Sui-mon (Water-mark)
5–7pm
Melbourne

Tue 29 August
Talking Points – Australian National University, School of Art and Design
5.30–7.30pm
Melbourne

In and Out of Light
6–9pm
North Melbourne

Labour Exchange
6–9pm
North Melbourne

Oomph!
6–9pm
North Melbourne

The material thought
6–9pm
North Melbourne

Wed 30 August

Three Spoons Full
3–5pm
Fitzroy North

The BOSS – The Best of Student Silversmithing
4–6pm
Fairfield

W.E. McMillan Collection – 1980's RMIT Gold and Silversmithing
6–7pm
Melbourne

REFLECTOR|RECEPTOR: Narratives of Experience
6–8pm
North Fitzroy

Container
6–9pm
Footscray

Thu 31 August

FiveTwelve Open Studio
12–3pm
Melbourne

Voveo: How to make a promise
2–4pm
Melbourne

Without A Jewel
2–4pm
Melbourne

Beyond Skill
4.30–5.30pm
Melbourne

Wood you?
4.30–5.30pm
Melbourne

back is front
5–6pm
Melbourne

Close to here
5–7pm
Melbourne

NEO Cuts
6–8pm
Melbourne

Steel Lives
6–8pm
Melbourne

Fri 1 September

Graduate Metal XV
1pm
Melbourne

Wondernamel: Decade
1pm
Melbourne

Inhabit
3–5.30pm
Fitzroy

Left and Right
5–7pm
Fitzroy

The trees have names
5–7pm
Fitzroy

Non-Euclidean transformations, beyond object, fluidifying
6–9pm
Fitzroy

Sat 2 September

Tidal Detritus
10am–12pm
North Melbourne

Linda Hughes
12pm
Melbourne

Working Holiday
1pm
North Melbourne

URBAN A-WEAR-NESS
12–5pm
Melbourne

FiveTwelve Open Studio
1–4pm
Melbourne

Up North
4–6pm
North Melbourne

Sun 3 September

Island Welcome
2–4pm
Brunswick

Radiant Pavilion is supported by:

CREATIVE VICTORIA



M CITY OF MELBOURNE