

LOEWE

LOEWE CRAFT PRIZE AT
CHAMBER GALLERY, NEW YORK
June 1st, 2017 – 6 to 9 pm



LOEWE

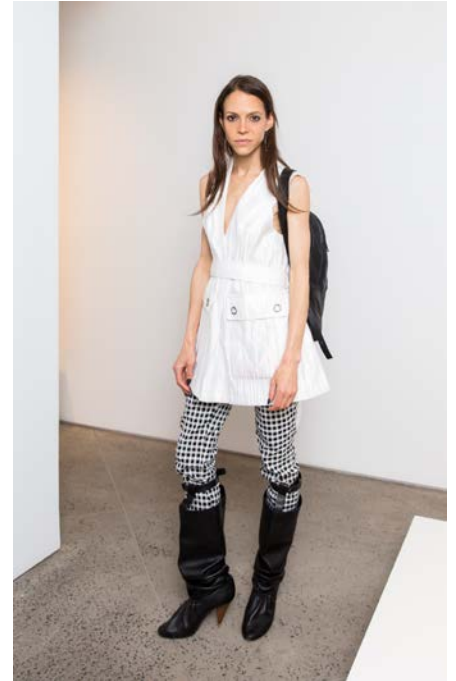
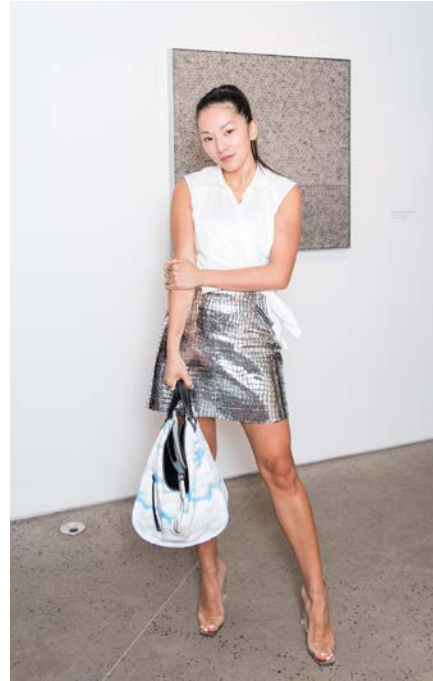
PR GUESTS : PRESS



Amy Astley (AD), Stefano Tonchi (W), Grace Coddington, Emma Elwick Bates (Vogue), Miles Socha (WWD)

LOEWE

INFLUENCERS



Tory Burch, Derek Blasberg and Kristina O'Neil, Tina Leung, Pari Ehsan

LOEWE

MODELS



Julia Bergshoeff, Vanessa Axente, Saskia de Brauw, Laura Love



WWD

Loewe Craft Prize Comes to New York

Jonathan Anderson was in town for the touring exhibition of the inaugural Loewe Craft Prize.

By *Jessica Iredale* on June 2, 2017



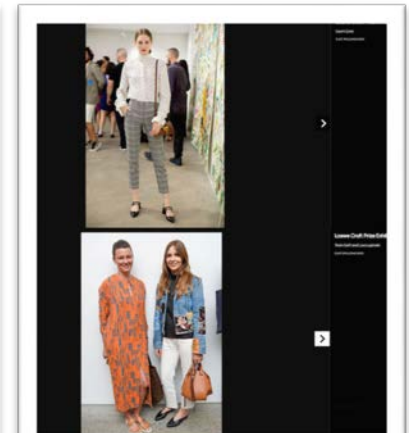
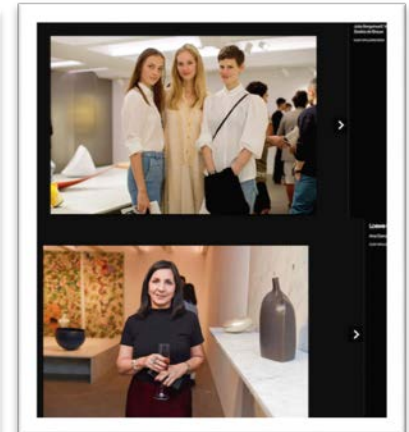
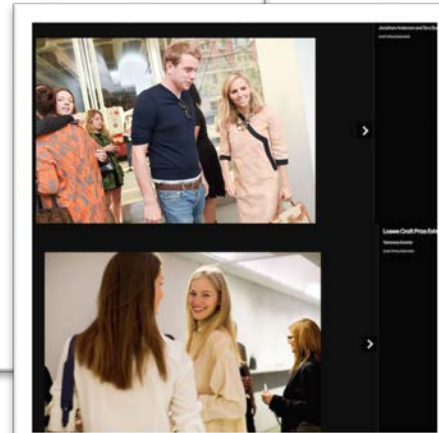
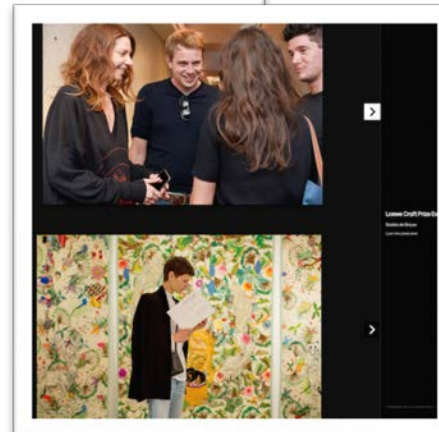
[VIEW GALLERY - 13 PHOTOS](#)



CRAFT MAGIC: Jonathan Anderson continued the tour of the **Loewe Foundation Craft Prize** exhibition in New York on Thursday. The exhibit started in April in Madrid with a showcase of the 26 finalists of the 4,000 applicants for the inaugural addition of the **Craft Prize** and is now in New York at the Chamber Gallery through June 6.

PRESS COVERAGE

WWD.COM





☰ 🔍
AD
SUBSCRIBE NOW
Get the Magazine

THE REPORT

Chamber Exhibits the Finalists from Loewe's Inaugural Craft Prize

Works in wood, ceramic, paper, and more show the vast reach of global craftsmanship

TEXT BY HADLEY KELLER ·
PHOTOGRAPHY BY LAUREN COLEMAN ·
Posted June 2, 2017

🎞️ VIEW AS SLIDESHOW


Spanish fashion house Loewe has long crossed the lines between fashion and design, retail and handicraft. For the past three years, the house's creative director, Jonathan Anderson, has presented an assortment of furniture, ceramics, and accessories at the *Salone del Mobile*. Last year, the brand doubled down on this dedication to independent design when its eponymous foundation launched a *Craft Prize*, an award intended to celebrate craftsmanship around the world. The prize's stated mission is to "recognize uniquely talented artisans whose artistic vision and will to innovate will set a new standard for the future of craft," and this year's finalists did not disappoint. The projects, which went on display today at New York's *Chamber* gallery, run the gamut from textile work to ceramic objects to jewelry pieces, a small sampling of the many wildly creative artisans working today. The top prize went to German Ernst Gamperl for his *Tree of Life 2*, an elegant wooden container hand-hewn from a felled 300-year old tree. Click through to see the rest of the finalists, and, if you're in New York, stop by Chamber to see them there through June 6.





Ernst Gamperl, Germany

Gamperl's *Tree of Life 2* won top prize, according to jury president Anatxu Zabalbeascoa, "For the way in which this work explores the meeting point between formal values and a social message. This is an object that is both beautiful and teaches us the value of recycling. It is based on rescuing fallen trees and bringing nature back to life with exquisite skill. It is the work of a gifted craftsman who has the special ability to have developed a distinctive individual voice rather than a style or signature".



Yoshiaki Kojiro, Japan

Kojiro's deep blue vessel, made from glass and copper oxide powders, is an experimental take on the traditional glassblowing of the artist's native town, Chiba. The jury recognized Kojiro, who is trained as an architect, for the "risk and innovation" in his materials.

05.31.17

6 Designers Explain Why Craft Still Matters In A Digital World

"Craft is more than just a way of making things; perhaps it's a way of thinking."



1/6 **Brendan Lee Satish Tang**, *Manga Ormolu Ver. 5.0-s*, 2016. [Photo: courtesy Loewe F

BY DIANA BUDDS LONG READ

“ARTISAN PRODUCTION IS ALWAYS PART OF INDUSTRIAL PRODUCT DEVELOPMENT.”

Ernst Gampel, a wood carver based in Germany, won the 2017 Loewe Craft Prize for *Tree of Life 2*, a sculptural vessel carved from a fallen tree.



Ernst Gampel, *Tree of Life 2016*. [Photo: courtesy Loewe Foundation]

Why wood?

Wood is a living material. For me it is one of the most versatile, elegant, and beautiful natural materials and it is enormously diverse: Every timber requires a different treatment. Most timber also smells really good when you work with it.

“CRAFT FEELS CLOSE TO THE BODY.”

Celia Pym, a textile artist based in the United Kingdom, explores embroidery, knitting, and darning. Her Ragpile sweater was a finalist for the craft prize.



Celia Pym, Norwegian Sweater original damaged sweater from Annemor Sundbø Ragpile Collection, 2010. [Photo: courtesy Loewe Foundation]

Why textiles?

I really love the soft and thin quality to worn and loved textiles. Sometimes the cloth gets so thin and there is the most delicate remains of the yarn—it's like the textile has become a spider's web, held together by thin threads.

“IT SLOWS EVERYTHING DOWN AND KEEPS TRADITIONAL TECHNIQUES ALIVE.”

Kristina Rothe, a designer based in Germany, works with paper to produce sculptures. Her *Burial Object* series of funerary vessels was a finalist for the prize.



Kristina Rothe, *Burial object 'Steps'*, 2010. [Photo: courtesy Loewe Foundation]

Why paper?

I like the weight of my material and that it can be fragile, light, and stable at the same time. I like the different conditions of the paper in process. It's a challenge to handle it when it's a wet, unstable pulp. And I always love the surprise of a dried object.

“CRAFT CAN INVEST A CONTEXT OF REGIONALISM AND HISTORY TO OUR CONVENIENCE-BASED ECONOMY.”

Yoshiaki Kojiro, an artist from Japan, uses experimental processes to make glass objects.



Yoshiaki Kojiro, *Structural Blue*, 2015. [Photo: courtesy Loewe Foundation]

Why glass?

I was originally an architectural designer. One holiday season, I became completely fascinated by the close relationship between glassblowers and their medium. Just around that time, CAD was beginning to be adopted in the design work. The technology made it burdensome to face PCs all day, and I came to doubt about engaging in huge development projects. I wanted to do a work closely related to materials physically so I began studying glass.

10 Standout Artisans from the Loewe Craft Prize Exhibition in New York

An exhibition of work by 26 finalists is on display in New York before heading to Paris in the Fall



June 1, 2017 | By Lucy Rees

Spearheaded by the Spanish brand's creative director, Jonathan Anderson, the **Loewe Craft Prize** aims to "showcase and celebrate the work of exceptionally talented artisans working in a range of craft-based professions."

The competition, launched in November last year, saw more than 4,000 entries from international artisans working in ceramics to embroidery to furniture to jewelry-making. An exhibition of work by 26 finalists, narrowed down by a star-studded panel including **Patricia Urquiola**, **Naoto Fukasawa**, and **Deyan Sudjic**, went on display in Madrid in April 2017.





OBSERVER

Designer Jonathan Anderson Can't Stop Buying Crafts

It's part of the reason why he established the Loewe Craft Prize

By [Dena Silver](#) - 06/02/17 1:21pm



Ernst Gamperl, Sheila Loewe, Jonathan Anderson. Benjamin Lozovsky/BFA.com

Housed in the architecturally stunning Chamber Gallery, there was quite a variety of goods on display. Like a concave bowl made from a single sheet of Britannia silver, an archaic deconstructed Norwegian sweater that was rehabbed back to its original form with white yard and an indigo blue bowl that seemed to almost glow from the combination of glass powder and copper oxide.



Designer Jonathan Anderson Cant Stop Buying Crafts

All the crafts, arranged in Chamber Gallery. Benjamin Lozovsky/BFA.com

Right near the entrance was the husk of a tree trunk, which happened to be the winning item from the Craft Prize. Its title? "Tree of Life 2." Made from a 300-year-old oak, the first-place creation was a container treated with clay, earth and stone powder, so rings, imperfections and characteristics of the ancient tree were seen.

That wasn't the case for the rest of the fashion-forward guests, who weren't the usual suspects that make up the Chelsea gallery crowd; there were Loewe puzzle bags scattered about the room, in classic leathers and intricate patchworks. Attendees included [Tory Burch](#), stylist [Kate Young](#), [Amy Astley](#), [Jane Keltner de Valle](#), [Stefano Tonchi](#) and [Derek Blasberg](#).



Tory Burch with the winning piece from Ernst Gamperl. Benjamin Lozovsky/BFA.com

After New York, this exhibit will travel to Tokyo in November 2017, followed by London in early 2018. And sometime later this month, the second Loewe Craft Prize will begin searching for their next outstanding talent. Hopefuls should keep just one thing in mind: the jury will be looking for something authentic.