

Cord Blood Metabolic Signatures of Birth Weight: A Population-Based Study

Peer-reviewed author version

Robinson, Oliver; Keski-Rahkonen, Pekka; Chatzi, Leda; Kogevinas, Manolis; NAWROT, Tim; Pizzi, Costanza; PLUSQUIN, Michelle; Richiardi, Lorenzo; Robinot, Nivonirina; Sunyer, Jordi; Vermeulen, Roel; Vrijheid, Martine; Vineis, Paolo; Scalbert, Augustin & Chadeau-Hyam, Marc (2018) Cord Blood Metabolic Signatures of Birth Weight: A Population-Based Study. In: JOURNAL OF PROTEOME RESEARCH, 17 (3), p. 1235-1247.

DOI: 10.1021/acs.jproteome.7b00846

Handle: <http://hdl.handle.net/1942/26605>

Cord blood metabolic signatures of birthweight: a population based study

Oliver Robinson, Pekka Keski-Rahkonen, Leda Chatzi, Manolis Kogevinas, Tim Nawrot, Costanza Pizzi, Michelle Plusquin, Lorenzo Richiardi, Nivonirina Robinot, Jordi Sunyer, Roel Vermeulen, Martine Vrijheid, Paolo Vineis, Augustin Scalbert, and Marc Chadeau-Hyam

J. Proteome Res., **Just Accepted Manuscript** • DOI: 10.1021/acs.jproteome.7b00846 • Publication Date (Web): 05 Feb 2018

Downloaded from <http://pubs.acs.org> on February 6, 2018

Just Accepted

“Just Accepted” manuscripts have been peer-reviewed and accepted for publication. They are posted online prior to technical editing, formatting for publication and author proofing. The American Chemical Society provides “Just Accepted” as a service to the research community to expedite the dissemination of scientific material as soon as possible after acceptance. “Just Accepted” manuscripts appear in full in PDF format accompanied by an HTML abstract. “Just Accepted” manuscripts have been fully peer reviewed, but should not be considered the official version of record. They are citable by the Digital Object Identifier (DOI®). “Just Accepted” is an optional service offered to authors. Therefore, the “Just Accepted” Web site may not include all articles that will be published in the journal. After a manuscript is technically edited and formatted, it will be removed from the “Just Accepted” Web site and published as an ASAP article. Note that technical editing may introduce minor changes to the manuscript text and/or graphics which could affect content, and all legal disclaimers and ethical guidelines that apply to the journal pertain. ACS cannot be held responsible for errors or consequences arising from the use of information contained in these “Just Accepted” manuscripts.



Cord blood metabolic signatures of birthweight: a population based study

Oliver Robinson^{a‡}, Pekka Keski-Rahkonen^{b‡}, Leda Chatzi^{c-e}, Manolis Kogevinas^{f-h}, Tim
Nawrot^{i-j}, Costanza Pizzi^k, Michelle Plusquin^{i-j}, Lorenzo Richiardi^k, Nivonirina Robinot^b, Jordi
Sunyer^{f-h}, Roel Vermeulen^l, Martine Vrijheid^{f-h}, Paolo Vineis^a, Augustin Scalbert^b, Marc
Chadeau-Hyam^a*

a. MRC-PHE Centre for Environment and Health, School of Public Health, Imperial
College London, UK

b. International Agency for Research on Cancer (IARC), Lyon, France

c. Department of Social Medicine, Faculty of Medicine University of Crete, Heraklion,
Greece.

d. Department of Preventive Medicine, Keck School of Medicine, University of South
California, Los Angeles, CA

e. Department of Genetics & Cell Biology, Faculty of Health, Medicine and Life Sciences,
Maastricht University, Maastricht, Netherlands

f. ISGlobal, Centre for Research in Environmental Epidemiology (CREAL), Barcelona,
Spain

1
2
3 g. Universitat Pompeu Fabra (UPF), Barcelona, Spain
4
5

6 h. CIBER Epidemiología y Salud Pública (CIBERESP), Barcelona, Spain
7
8

9 i. Centre for Environmental Sciences, Hasselt University, Diepenbeek, Belgium
10
11

12 j. Department of Public Health & Primary Care, Leuven University, Leuven, Belgium.
13
14

15 k. Cancer Epidemiology Unit, Department of Medical Sciences, University of Turin and
16
17 CPO-Piemonte, Turin, Italy
18
19

20
21
22 l. Utrecht University, Institute for Risk Assessment Sciences, Environmental Epidemiology
23
24 Division, Utrecht, Netherlands
25
26

27
28 KEYWORDS: Metabolomics; birthweight; fetal growth; cord blood; metabolism; pathway
29
30 perturbation
31
32

33
34 ABSTRACT: Birthweight is an important indicator of maternal and fetal health, and a predictor
35
36 of health in later life. However, the determinants of variance in birthweight are still poorly
37
38 understood. We aimed to identify the biological pathways, which may be perturbed by
39
40 environmental exposures, that are important in determining birthweight. We applied untargeted
41
42 mass-spectrometry based metabolomics to 481 cord blood samples collected at delivery in four
43
44 birth cohorts from across Europe: ENVIRONAGE (Belgium), INMA (Spain), Piccolipiu (Italy)
45
46 and Rhea (Greece). We performed a metabolome-wide association scan for birthweight on over
47
48 4000 metabolic features, controlling the false discovery rate at 5%. Annotation of compounds
49
50 was conducted through reference to authentic standards. We identified 68 metabolites
51
52 significantly associated with birthweight, including vitamin A, progesterone, docosahexaenoic
53
54
55
56
57
58
59
60

1
2
3 acid, indolelactic acid, and multiple acylcarnitines and phosphatidylcholines. We observed
4
5 enrichment ($p < 0.05$) of the tryptophan metabolism, prostaglandin formation, C21-steroid
6
7 hormone signalling, carnitine shuttle and glycerophospholipid metabolism pathways. Vitamin A
8
9 was associated with both maternal smoking and birthweight, suggesting a mediation pathway.
10
11 Our findings shed new light on the pathways central to fetal growth and will have implications
12
13 for antenatal and perinatal care and potentially for health in later life.
14
15
16
17
18
19
20
21
22
23
24
25
26
27
28
29
30
31
32
33
34
35
36
37
38
39
40
41
42
43
44
45
46
47
48
49
50
51
52
53
54
55
56
57
58
59
60

Introduction

Weight at birth is of importance due to its relation both to the health of the mother and the new born¹ and is a predictor of the subsequent development of the child^{2,3}. Low birthweight has also been associated with disease in later life, including cardiovascular disease and diabetes⁴ while high birthweight is associated with increased risk of developing breast cancer and other malignancies⁵⁻⁶. Thus, under the developmental origin of health and disease hypothesis, adverse fetal development may have a lifelong impact. Exposure to a number of different agents during pregnancy including smoking⁷, air pollution⁸ and chemicals such as polychlorinated biphenyls⁹ have been associated with lower birthweight. Improved understanding of the biological pathways associated with environmentally induced alterations in birthweight may identify mechanisms through which fetal growth is affected. This may in-turn both inform primary care and ultimately improve the causal evidence regarding adverse fetal development.

Metabolomics is increasingly used in maternal-fetal medicine¹⁰ to identify biological changes associated with fetal growth. Horgan *et al.*¹¹ examined ultra-high performance liquid chromatography-mass spectrometry (UHPLC-MS) profiles of first trimester maternal plasma samples to identify metabolites predictive of small for gestational age babies. Maitre *et al.* used nuclear magnetic resonance (NMR) spectroscopy on maternal pregnancy urine samples to identify metabolites predictive of preterm birth, small for gestational age, and fetal growth restriction¹² and birthweight¹³. Dessi *et al.*¹⁴ identified four metabolites associated with fetal growth restriction in neonatal urine samples. However, only a handful of studies have investigated metabolic changes in cord blood, which is a particularly relevant tissue as it contains the essential nutrients, hormones and immunological factors, and potentially harmful xenobiotic metabolites, to which the developing fetus is directly exposed. Horgan *et al.*¹¹ compared six

1
2
3 small for gestational age babies with controls observing differences in levels of sphingolipids,
4 phospholipids and carnitines. Ivorra *et al.*¹⁵ and Tea *et al.*¹⁶ both used nuclear magnetic
5 resonance spectroscopy to compare a small number of low birthweight and very low birthweight
6 newborns respectively with controls and detected some differences in metabolite levels.
7
8 Recently, Hellmuth *et al.*¹⁷ applied a targeted mass spectrometry based analysis and observed a
9 positive association between lysophosphatidylcholines (lysoPCs) and birthweight. While initial
10 studies have so far been based on small samples or limited subsets of molecules, they
11 demonstrate the potential of metabolic profiling to detect biological pathways related to fetal
12 development. Adequately powered studies using sensitive and untargeted platforms are now
13 required.
14
15
16
17
18
19
20
21
22
23
24
25

26 In this study, we have employed untargeted UHPLC-MS -based metabolomics to identify
27 metabolic features associated with birthweight in cord blood collected from a large population-
28 based sample from four European birth cohorts. We aimed to understand the mechanisms that
29 are important to fetal growth, which may be influenced by the maternal environment including
30 exposure to air pollutants and tobacco smoke, and that may impact on health over the life course.
31
32
33
34
35
36
37
38
39
40

41 Experimental Section

42 Cohorts and sampling

43
44 Within the context of the EXPOsOMICS collaborative European project¹⁸, metabolomic
45 analyses were conducted on umbilical cord blood samples from four population-based birth
46 cohorts: ENVIRONAGE¹⁹, Piccolipiu²⁰, INMA²¹ and Rhea²². The ENVIRONAGE cohort
47 recruited women when they arrived for delivery at the South-East-Limburg Hospital in Gent,
48 Belgium between 2010 and 2013. The INMA cohort enrolled women during the first trimester of
49
50
51
52
53
54
55
56
57
58
59
60

1
2
3 pregnancy at public primary health care centres or hospitals in Sabadell, Spain between 2004 and
4
5 2006. The participating Piccolipiu cohort centre enrolled women giving birth at the main hospital
6
7 of the City of Turin, Italy, between 2011 and 2013. The Rhea cohort enrolled women during the
8
9 first trimester of pregnancy at public primary health care centres or hospitals in Heraklion,
10
11 Greece between 2007 and 2008. Whole blood samples were collected using venipuncture of cord
12
13 vessels before the placenta was delivered and processed as follows in each cohort: In
14
15 *ENVIRONAGE*, samples were collected into EDTA (BD, Franklin Lakes, NJ, USA) vacutainers
16
17 and within 20 mins were centrifuged at 3,200 rpm for 15 min into plasma; In Piccolipiu, samples
18
19 were collected into BD EDTA vacutainers, stored at 4°C for less than 24 h and centrifuged for 10
20
21 minutes at 1300g into plasma; In Rhea samples were collected into BD gel separator vacutainers
22
23 and centrifuged within 2 h at 2500 rpm for 10 min into serum; In INMA samples were collected
24
25 into BD gel separator vacutainers, stored at 4°C for less than 4 h and centrifuged at 3000 rpm for
26
27 10-15 min into serum. Samples were immediately frozen at -20 °C (INMA) or -80 °C (all other
28
29 cohorts) until analysis. Cohort inclusion criteria and further protocols can be found in the
30
31 respective cohort references.
32
33
34
35
36

37
38 Family lifestyle factors were collected from mothers through interview by trained
39
40 fieldworkers and medical history for each family transferred from hospital records. Samples
41
42 were selected from each cohort on the basis of biomaterial and data availability. Selected
43
44 samples were shipped to International Agency for Research on Cancer, Lyon, France for
45
46 metabolomics analysis.
47
48

49 Exposure Assessment

50 Exposure to air pollutants (particulate matter ≤ 10 microns (PM₁₀), ≤ 2.5 microns (PM_{2.5}) and \leq
51
52 0.1 microns (UFP) and NO₂) was assessed at the home address, averaged over the year before
53
54 pregnancy, by land use regression models²³.
55
56
57
58
59
60

Sample analysis

Samples were randomized and prepared by mixing a 30- μ L aliquot with 200 μ L of acetonitrile and filtering the precipitate with 0.2 μ m Captiva ND plates (Agilent Technologies). The filtrate was collected into a polypropylene well plate that was sealed and kept refrigerated until analysis. A quality control (QC) sample was prepared by mixing small aliquots of 91 randomly selected study samples. Aliquots (30 μ L) of the QC sample were then processed along with the study samples, with each 96-well plate containing four individually extracted QCs. Samples were analyzed as a single uninterrupted batch with a UHPLC-MS system consisting of a 1290 Binary LC system, a Jet Stream electrospray ionization (ESI) source, and a 6550 QTOF mass spectrometer (Agilent Technologies). Autosampler tray was kept refrigerated and 2 μ L of the sample solution was injected on an ACQUITY UPLC HSS T3 column (2.1 \times 100mm, 1.8 μ m; Waters). Column temperature was 45 $^{\circ}$ C and mobile phase flow rate 0.4 ml/min, consisting of ultrapure water and LC-MS grade methanol, both containing 0.05 % (v/v) of formic acid. The gradient profile was as follows: 0–6 min: 5% \rightarrow 100% methanol, 6–10.5 min: 100% methanol, 10.5–13 min: 5% methanol. The mass spectrometer was operated in positive polarity using the following conditions: drying gas (nitrogen) temperature 175 $^{\circ}$ C and flow 12 L/min, sheath gas temperature 350 $^{\circ}$ C and flow 11 L/min, nebulizer pressure 45 psi, capillary voltage 3500 V, nozzle voltage 300 V, and fragmentor voltage 175 V. Data was acquired in centroid format using an extended dynamic range mode, with a scan rate of 1.67 Hz and a mass range from 50 to 1000. For MS/MS analyses the isolation width was 1.3 Da and collision energies 10, 20, and 40 V. Continuous mass axis calibration was performed using two reference ions (m/z 121.050873 and m/z 922.009798). The analytical run was initiated with priming injections of in-house human plasma extract to achieve a stable response, followed by the study samples and one QC sample after every 12 injections. Data was acquired using MassHunter Acquisition B.05.01 software.

Data pre-processing

Pre-processing of the acquired data was performed using Qualitative Analysis B.06.00 SP1, DA Reprocessor, and Mass Profiler Professional 12.1 software (Agilent Technologies). The initial processing was performed with Molecular Feature Extraction (MFE) algorithm for small molecules using a mass range of 50-1000. Thresholds for the mass and chromatographic peak heights were 1500 and 10000 counts, respectively. Quality score threshold was 80. Only singly charged proton adducts ($[M+H]^+$) were included. Spacing tolerance for isotope peaks was 0.0025 m/z plus 7 ppm. Isotope model for common organic molecules was used and features with indeterminate neutral mass were excluded. Feature alignment was performed with retention time and mass windows of 0.075 min and 15 ppm + 2 mDa. A target list for a recursive extraction was created from features present in at least 2% of the samples. Find by Formula (FBF) algorithm was then employed with match tolerance for the mass and retention time ± 10 ppm and ± 0.04 min, respectively. Ion species was limited to $[M+H]^+$ and a threshold for chromatographic peak height was 2000 counts. The resulting features were aligned in Agilent Mass Profiler Professional using the same parameters as described above. For statistical analysis, metabolic features present in less than 60% of the samples were removed, data were log-transformed and missing values were imputed using the `impute.QRILC` function within the `imputeLCMD` R package²⁴.

Statistical analysis

The relationship between birthweight and the cord metabolome was assessed using a metabolome-wide association scan (MWAS) approach with separate linear regression models for each metabolic feature using the 'omics' R package²⁵. To account for multiple comparisons, we applied a Benjamini- Hochberg correction using an overall False Discovery Rate of (FDR) below 5%. The covariates included in the main MWAS analysis were gestational age, sex, cohort,

1
2
3 maternal height, maternal weight, and paternal height. Covariates were chosen first following
4 visualisation of assumptions using a directed acyclical graph (figure s1) and then following
5 testing of associations with both birthweight in bivariate analyses (Analysis of Variance or
6 Pearson's correlation tests) and with metabolic features as visualised by Q-Q plots of the p-value
7 distribution. We chose to not adjust for environmental factors that may be associated with
8 birthweight in the main analysis since we hypothesised that the metabolome may mediate these
9 associations. Instead we tested for potential confounding by environmental factors in sensitivity
10 analyses through stratification by covariates and adjustment separately for each birthweight
11 associated risk factor.
12
13
14
15
16
17
18
19
20
21
22

23
24 We further investigated links between risk factors and birthweight by first constructing a linear
25 regression model of birthweight, including those factors associated with birthweight ($p \leq 0.1$) in
26 bivariate analyses. We then adjusted the model for the metabolome, using the first components
27 of a principal component analysis (PCA) of metabolites associated with birthweight in the main
28 MWAS analysis. The number of components to include was selected by examination of a scree
29 plot of explained variance. Where risk factor associations were attenuated following adjustment
30 on birthweight-related metabolites, we tested the association of that factor with all birthweight
31 related metabolites in a further analysis.
32
33
34
35
36
37
38
39
40
41

42 All analyses were performed in R version 3.3²⁶.
43
44

45 Metabolite and pathway annotation

46 Annotation of the discriminating features was done as follows: 1) The m/z values of all the
47 features were searched against the human metabolite database²⁷ and Metlin²⁸, using $[M+H]^+$,
48 $[M+Na]^+$ and $[M+2H]^{2+}$ as adducts and ± 8 ppm for molecular weight tolerance. In addition,
49 MyCompoundID metabolite library²⁹ was searched for potential conjugates (sulphates,
50 glucuronides) and neutral losses ($-NH_3$, H_2O), using $[M+H]^+$ ions and ± 8 ppm mass tolerance. 2)
51
52
53
54
55
56
57
58
59
60

1
2
3 Features were grouped based on retention time similarity and intensity correlation across the
4 samples to assist in identifying ions originating from the same metabolite. 3) Quality of the
5 chromatographic peaks and spectra were inspected and the plausibility of database candidates
6 was assessed based on retention time, isotope pattern and adduct formation or neutral losses. 4)
7 Identification was confirmed by reanalysis of representative samples and pure standards when
8 available, and comparison of the retention times and the MS/MS spectra. When standards were
9 not available, MS/MS spectra were acquired and compared against those in mzCloud
10 (www.mzcloud.org) or Metlin. Chromatograms and spectra can be found in the supporting
11 information (Additional dataset 1). The level of identification was as proposed by Sumner et al
12
13
14
15
16
17
18
19
20
21
22
23
24
25
30

26 Significantly enriched metabolic pathways were identified using the *mummichog* program³¹.
27
28 The algorithm searches tentative compound lists from metabolite reference databases against an
29 integrated model of human metabolism to identify functional activity. Fisher's exact tests and
30 permutation are used to infer p-values for likelihood of pathway enrichment among significant
31 features as compared to pathways identified among the entire compound set present in reference
32 list (the entire metabolome dataset), considering the probability of mapping the significant m/z
33 features to pathways. *Mummichog* parameters were set to match against ions produced by the
34 MS method employed ($[M]^+$, $[M+H]^+$, $[M+2H]^{2+}$, $[M+3H]^{3+}$, $[M+Na]^+$, $[M+H+Na]^{2+}$, $[M+K]^+$,
35 $[M-H_2O+H]^+$, $[M-H_4O_2+H]^+$, $[M-NH_3+H]^+$, $[M-CO+H]^+$, $[M-CO_2+H]^+$, $[M-HCOOH+H]^+$,
36 $[M+HCOONa]^+$, $[M-HCOONa+H]^+$, $[M-C_3H_4O_2+H]^+$) at ± 8 ppm mass tolerance.
37
38
39
40
41
42
43
44
45
46
47
48
49

50 Results

51 Participant information

52 Samples of cord blood collected from 499 deliveries (200 from ENVIRONAGE, 100 each
53 from INMA and Rhea, and 99 from Piccolipiu) were included in the analysis. The mean
54
55
56
57
58
59
60

1
2
3 birthweight was 3309 g (interquartile range 2992 – 3598 g) with 16 (3 %) babies born with low
4
5 birthweight (< 2500g). Demographic information and covariate associations with birthweight are
6
7 shown in table 1. Gestational age, cohort, sex, maternal height, weight and body mass index,
8
9 paternal height, maternal weight gain during pregnancy, smoking by the mother and residential
10
11 exposure to air pollution were all significantly associated with birthweight in bivariate analyses.
12
13
14
15
16
17
18
19
20
21
22
23
24
25
26
27
28
29
30
31
32
33
34
35
36
37
38
39
40
41
42
43
44
45
46
47
48
49
50
51
52
53
54
55
56
57
58
59
60

Table 1. Participant information and covariate associations with birthweight.

| | N (%) or mean (IQR) | Missin g values | mean birthweight (IQR) or <i>r</i> with birthweight | p value* |
|------------------------------|------------------------|-----------------------|--|----------|
| Birthweight (g) | 3309 (2992 - 3598) | 1 | - | - |
| Gestational age (wks) | 39.2 (38.1 -40) | 1 | 0.21 | <0.0001 |
| Cohort | | 0 | | 0.014 |
| Rhea | 100 (20) | - | 3220 (2970 - 3520) | |
| Environage | 200 (40) | - | 3384 (3045 - 3705) | |
| Piccolipiu | 99 (20) | - | 3221 (2955 - 3490) | |
| Inma | 100 (20) | - | 3298 (2998 - 3572) | |
| Sex | | 1 | | 0.0005 |
| Male | 258 (52) | - | 3377 (3076 -3648) | |
| Female | 240 (48) | - | 3237 (2915 - 3550) | |
| Parity | | 4 | | 0.13 |
| 0 | 129 (26) | - | 3275 (2990 - 3570) | |
| 1 | 238 (48) | - | 3294 (2971 - 3579) | |
| 2 | 128 (26) | - | 3379 (3119 - 3640) | |
| Season of conception | | 3 | | 0.35 |
| January-March | 122 (25) | - | 3318 (3000 - 3550) | |
| April-June | 129 (26) | - | 3296 (2970 - 3600) | |
| July-September | 160 (32) | - | 3348 (3019 - 3630) | |
| October-December | 85 (17) | - | 3240 (2980 - 3485) | |
| Delivery | | 2 | | 0.18 |
| Vaginal | 382 (77) | - | 3324 (3000 - 3614) | |

| | | | | |
|---|------------------|----|--------------------|---------|
| Caesarean | 115 (23) | - | 3259 (2960 – 3542) | |
| Maternal age (years) | 30.7 (27.9-34) | | -0.04 | 0.44 |
| Maternal height (cm) | 164.5 (160-168) | 2 | 0.27 | <0.0001 |
| Maternal weight (kg) | 62 (42 - 130) | 2 | 0.24 | <0.0001 |
| Maternal BMI | 23 (20.8 - 25.8) | 2 | 0.15 | 0.001 |
| Maternal weight gain (kg) | 13.63 (10-17) | 13 | 0.21 | 0.0002 |
| Paternal height (cm) | 177.8 (173 -182) | 17 | 0.14 | 0.003 |
| Paternal weight (kg) | 82 (73 - 90) | 17 | 0.07 | 0.11 |
| Mother born in country | | 9 | | 0.69 |
| Yes | 432 (88) | - | 3315 (3000 - 3586) | |
| No | 58 (12) | - | 3287 (2881 - 3638) | |
| Mother's education | | 12 | | 0.64 |
| Primary school | 62 (13) | - | 3291 (2975 - 3595) | |
| Secondary School | 209 (43) | - | 3296 (2980 - 3590) | |
| University of higher | 216 (44) | - | 3333 (3060 - 3589) | |
| Father's Education | | 28 | | 0.08 |
| Primary school | 96 (20) | - | 3236 (2915 - 3550) | |
| Secondary School | 227 (47) | - | 3288 (2982 - 3580) | |
| University of higher | 148 (30) | - | 3365 (3084 - 3600) | |
| Maternal Smoking (during 2nd trimester) | | 3 | | 0.06 |
| Yes | 57 (11%) | - | 3207 (2890 - 3440) | |
| No | 439 (89%) | - | 3324 (3000 - 3612) | |
| Passive smoke exposure | | 15 | | 0.50 |
| Yes | 172 (36) | - | 3295 (2970 - 3616) | |

| | | | | | |
|--|--|---------------------|---|--------------------|-------|
| No | | 312 (64) | - | 3324 (3000 - 3592) | |
| Exposure to PM₁₀ (µg/m³) | | 33.0 (17.8 - 44.0) | 4 | -0.13 | 0.002 |
| Exposure to PM_{2.5} (µg/m³) | | 18.14 (12.4 - 21.0) | 4 | -0.11 | 0.02 |
| Exposure to NO₂ (µg/m³) | | 29.1 (13.4 - 40.3) | 4 | -0.11 | 0.02 |

*p value for association with birthweight, calculated from Pearson's correlation test (continuous variable) or analysis of variance test (categorical variable). IQR = Interquartile range.

Metabolomic data

The total number of metabolomic features was 9947. Out of these, 4870 (49%) were found in at least 90% of the QC sample injections, with 4019 (83%) having a coefficient of variation below 30%, indicating good reproducibility. Features were excluded if present in less than 60% of participant samples, leaving 4714 metabolic features for statistical analysis. A principal component analysis (PCA) of these features (whole metabolome PCA) showed that the 1st component explained 18% of variance and 307 components explained 95% of the variance suggesting considerable redundancy within the data (figure s2A). There was clear separation along the second component by cohort (figure s2B). No separation was observed with other covariates or technical variables.

Metabolic features associated with birthweight

In the main MWAS analysis of 481 participants with complete covariate data, adjusted for gestational age, cohort, sex, maternal height, maternal weight, and paternal height, 138 features were significantly associated (FDR < 5%) with birthweight (figure 1).

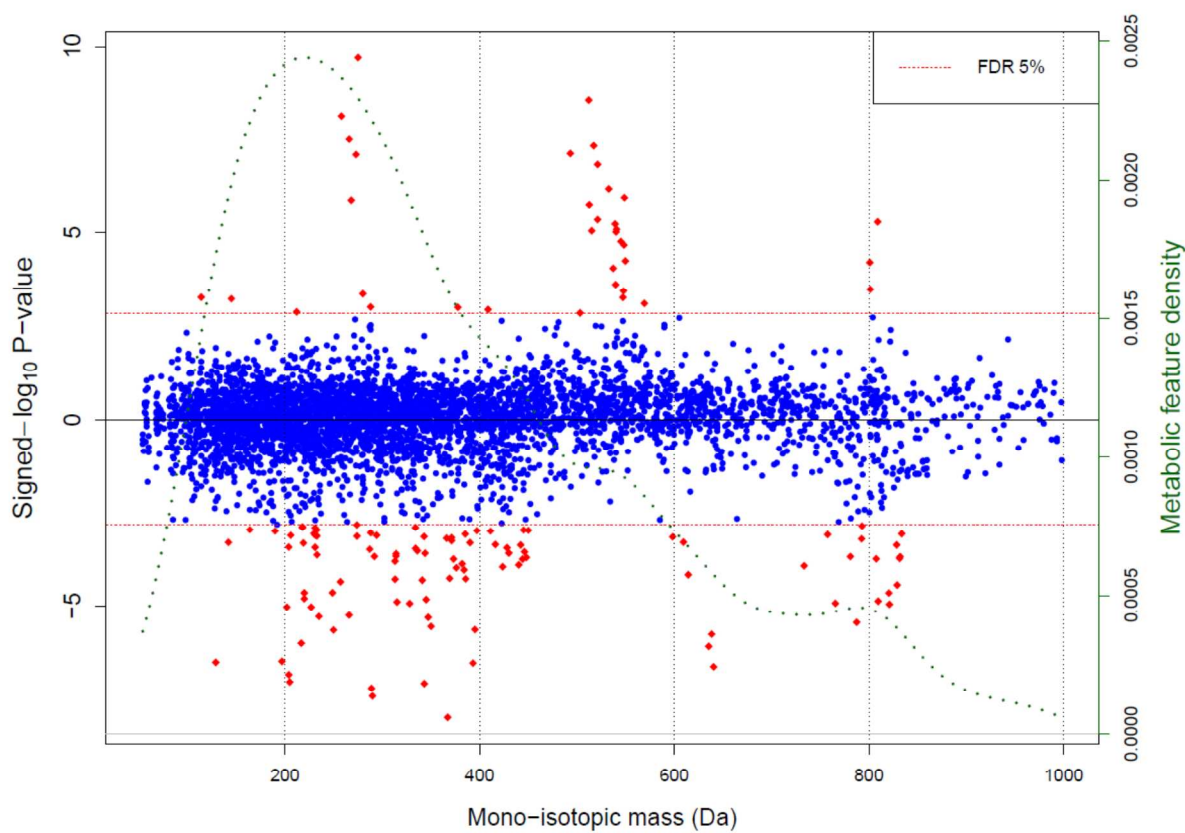


Figure 1: Manhattan Plot showing strength of association ($\log_{10} p$ value) with birthweight for each metabolic feature, arranged by mono-isotopic mass. Green dotted line shows density of metabolic features. Sign of p value indicates direction of association. Features are coloured red if they are metabolome-wide significant at the 5% false discovery rate.

After grouping of ions originating from the same molecule (matched by retention time and pairwise feature correlation), there were 68 unique compounds associated with birthweight. 29 of these were annotated to at least the level of compound class, based on matching mass, isotope pattern, and product ion spectra (table 2). Fifteen compounds were identified as acylcarnitines, nine as phosphatidylcholines (PCs) or lysoPCs, two as tryptophan metabolites (indolelactic acid and an isomeric form of methoxykynurenate), two as essential nutrients (retinol (vitamin A) and

1
2
3 docosahexaenoic acid (DHA)) and one as a steroid hormone. Seven of these were conclusively
4 identified through comparisons with authentic standards: decanoylcarnitine, dodecanoylcarnitine
5 and tetradecanoylcarnitine, indolelactic acid, retinol, the ω -3 fatty acid DHA and progesterone,
6 one of the major progestational steroid hormones. In addition to the 29 annotated metabolites,
7 five compounds (three diacylglycerols and two lysoPCs) were tentatively assigned based on
8 exact mass and isotope pattern, due to low intensity or lack of MS/MS spectra or authentic
9 standards (table 2). Retention time and exact mass of all significantly associated features,
10 including unassigned compounds, is given in table s1. Chromatograms and mass spectra of all
11 annotated compounds are given in additional dataset 1.
12
13
14
15
16
17
18
19
20
21
22
23
24
25
26
27
28
29
30
31
32
33
34
35
36
37
38
39
40
41
42
43
44
45
46
47
48
49
50
51
52
53
54
55
56
57
58
59
60

Table 2: Metabolites significantly associated with birthweight

| m/z | Retention time (minutes) | Ion | Name ^a | ID level ^b | Compound class | Direction of change with increasing birthweight | P value |
|----------|--------------------------|-------------------------------------|--|-----------------------|-----------------------|---|----------|
| 368.2793 | 5.631 | [M+H] ⁺ | 3, 5-Tetradecadiencarnitine (C14:2) | 2 | Acylcarnitine | DOWN | 1.00E-08 |
| 518.3216 | 6.782 | [M+H] ⁺ | LysoPC (C18:3) | 2 | Glycerophospholipid | UP | 4.63E-08 |
| 494.3250 | 6.817 | [M+H] ⁺ | LysoPC (C16:1) | 2 | Glycerophospholipid | UP | 7.45E-08 |
| 344.2797 | 5.647 | [M+H] ⁺ | Dodecanoylcarnitine (C12:0) | 1 | Acylcarnitine | DOWN | 8.31E-08 |
| 206.0822 | 3.829 | [M+H] ⁺ | Indolelactic acid | 1 | Tryptophan metabolite | DOWN | 9.16E-08 |
| 522.3555 | 6.980 | [M+H] ⁺ | LysoPC (C18:1) | 2 | Glycerophospholipid | UP | 1.45E-07 |
| 641.5112 | 9.938 | [M+Na] ⁺ | Diacylglycerol (C36:3) | 4 | Glycerolipid | DOWN | 2.34E-07 |
| 269.2278 | 7.219 | [M-H ₂ O+H] ⁺ | Retinol | 1 | Vitamin | UP | 1.30E-06 |
| 639.4946 | 9.408 | [M+Na] ⁺ | Diacylglycerol (C36:4) | 4 | Glycerolipid | DOWN | 1.74E-06 |
| 396.3100 | 5.944 | [M+H] ⁺ | 9,12-Hexadecadienoylcarnitine (C14:1) | 2 | Acylcarnitine | DOWN | 2.32E-06 |
| 522.3565 | 7.058 | [M+H] ⁺ | LysoPC (C18:1) | 2 | Glycerophospholipid | UP | 4.55E-06 |
| 329.2482 | 7.232 | [M+H] ⁺ | Docosahexaenoic acid | 1 | Fatty Acid | DOWN | 1.18E-05 |
| 766.5815 | 8.859 | [M+H] ⁺ | PC-O (C36:4) (C ₄₄ H ₈₀ NO ₇ P) | 3 | Glycerophospholipid | DOWN | 1.20E-05 |

| | | | | | | | |
|----------|-------|---------------------|--|---|-----------------------|------|----------|
| 316.2489 | 5.139 | [M+H] ⁺ | Decanoylcarnitine (C10:0) | 1 | Acylcarnitine | DOWN | 1.30E-05 |
| 810.6053 | 9.169 | [M+H] ⁺ | PC (C38:4) | 3 | Glycerophospholipid | DOWN | 1.37E-05 |
| 258.1699 | 2.831 | [M+H] ⁺ | 2-Hexenoylcarnitine (C6:1) | 2 | Acylcarnitine | DOWN | 4.43E-05 |
| 342.2641 | 5.422 | [M+H] ⁺ | Trans-2-Dodecenoylcarnitine (C12:1) | 2 | Acylcarnitine | DOWN | 4.89E-05 |
| 314.2318 | 4.967 | [M+H] ⁺ | Decenoylcarnitine_2 ^c (C10:1) | 2 | Acylcarnitine | DOWN | 5.20E-05 |
| 370.2955 | 5.840 | [M+H] ⁺ | Tetradecenoylcarnitine (C14:1) | 2 | Acylcarnitine | DOWN | 5.49E-05 |
| 615.4959 | 9.763 | [M+Na] ⁺ | Diacylglycerol (C34:2) | 4 | Glycerolipid | DOWN | 6.82E-05 |
| 734.5700 | 8.960 | [M+H] ⁺ | PC (C32:0) | 3 | Glycerophospholipid | DOWN | 1.17E-04 |
| 314.2321 | 4.878 | [M+H] ⁺ | Decenoylcarnitine_1 ^c (C10:1) | 2 | Acylcarnitine | DOWN | 1.55E-04 |
| 315.2320 | 6.394 | [M+H] ⁺ | Progesterone | 1 | Steroid hormone | DOWN | 2.11E-04 |
| 288.2171 | 4.422 | [M+H] ⁺ | L-Octanoylcarnitine (C8:0) | 2 | Acylcarnitine | DOWN | 3.21E-04 |
| 232.1537 | 1.927 | [M+H] ⁺ | Butyrylcarnitine / Isobutyryl-L-carnitine (C4:0) | 2 | Acylcarnitine | DOWN | 3.61E-04 |
| 220.0605 | 3.671 | [M+H] ⁺ | Methoxykynurenate ^d (C ₁₁ H ₉ NO ₄) | 3 | Tryptophan metabolite | DOWN | 4.69E-04 |
| 548.3681 | 7.141 | [M+H] ⁺ | LysoPC (C20:2) | 4 | Glycerophospholipid | UP | 5.58E-04 |
| 782.5712 | 8.628 | [M+H] ⁺ | PC (C36:4) | 3 | Glycerophospholipid | DOWN | 6.03E-04 |
| 372.3112 | 6.006 | [M+H] ⁺ | Tetradecanoylcarnitine (C14:0) | 1 | Acylcarnitine | DOWN | 6.46E-04 |
| 758.5747 | 8.684 | [M+H] ⁺ | PC (C34:2) | 3 | Glycerophospholipid | DOWN | 7.88E-04 |
| 570.3551 | 7.021 | [M+H] ⁺ | LysoPC (C22:5) | 4 | Glycerophospholipid | UP | 8.01E-04 |

| | | | | | | | |
|----------|-------|--------------------|--|---|---------------|------|----------|
| 386.2899 | 5.568 | [M+H] ⁺ | 3-Hydroxy-cis-5-tetradecenoylcarnitine (C14:1) | 2 | Acylcarnitine | DOWN | 8.10E-04 |
| 412.3045 | 5.750 | [M+H] ⁺ | 3-Hydroxyhexadecadienoylcarnitine (C16:1) | 2 | Acylcarnitine | DOWN | 9.82E-04 |
| 398.3264 | 6.109 | [M+H] ⁺ | Hexadecenoylcarnitine (C16:1) | 2 | Acylcarnitine | DOWN | 1.01E-03 |

^a Common names as used in HMDB. Molecular formulas given when identification inconclusive or more than one isomers are possible. Chain lengths and number of double bonds are indicated for acylcarnitines, glycerophospholipid, and diacylglycerols.

^b Level 1 (identified compounds): retention time and MS/MS spectra matches with an authentic chemical standard; Level 2 (putatively annotated compound): no standard available or analysed but has a single database candidate within 5 ppm mass error, matching isotope pattern and MS/MS spectra; Level 3 (putatively characterized compound class): MS/MS spectral similarity with compounds from a known chemical class; Level 4 (Unknown compounds): no standard or MS/MS spectra available but a chemically plausible hit in a metabolite database within 5 ppm mass error and a matching isotope pattern⁶⁰

^c Two isomers of decenoylcarnitine were identified.

^d Likely a positional isomer of methoxykynurenate based on closeness of retention time and similarities in spectra to those acquired from authentic standard of 8-methoxykynurenate.

In PCA of the significant compounds, over 50% of variance was explained by 5 components, and 41 components were required to explain over 95% of the variance of these features. There was some separation in results by cohort (figure 3a) and inspection of the component loadings (figure 3b) revealed this was driven mainly by differing levels of acylcarnitines along the first component and of lysoPCs and the tentatively assigned diacylglycerols along the second component.

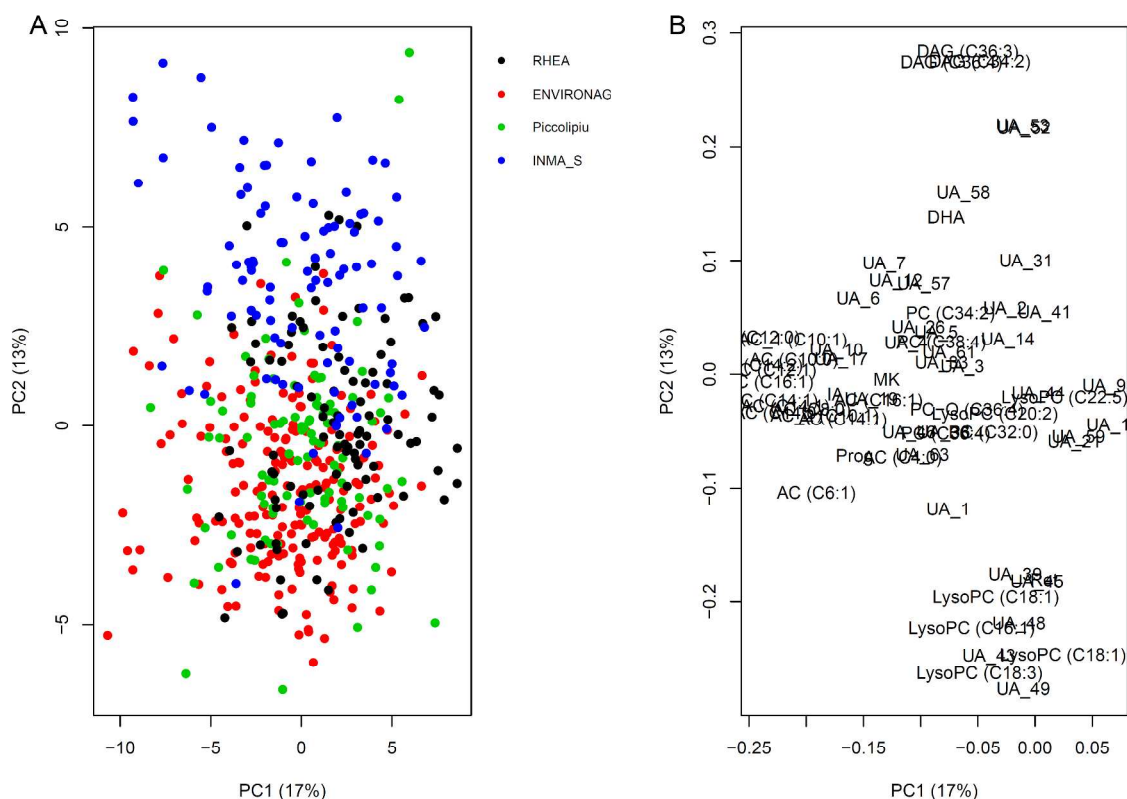


Figure 3: PCA analysis of significant metabolites. A: Scores scatter plot of first two components, coloured by cohort. B: Loadings scatterplot of first two components. Abbreviations: AC: acylcarnitine, UA: Unassigned, PC: Phosphatidylcholine, LysoPC: lysophosphatidylcholine, Prog: Progesterone, Ret: Retinol, DAG: Diacylglycerol, IA: Indolelactic acid, MK:

1
2
3 *methoxykynurenate, DHA: Docosahexaenoic acid. Numbers following unassigned compounds*
4
5 *refer to compound numbers (see table s1).*
6
7
8
9

10 11 **Sensitivity analysis**

12 To further assess the potential cohort-specific results, we also ran our models on each cohort
13 separately (table s2). Additionally, we stratified by sex and re-ran analyses after excluding
14 preterm and caesarean deliveries (table s2). Results were generally consistent across cohorts,
15 although we noted stronger associations for the smaller sized lysoPCs in the INMA cohort and
16 non-significant and opposite directions of association for some acylcarnitines
17 (dodecanoylcarnitine, decanoylcarnitine, Trans-2-dodecenoylcarnitine, and
18 tetradecenoylcarnitine) in Rhea and for the three tentatively assigned diacylglycerols in
19 Piccolipiu. These differences largely reflect the heterogeneity of the metabolic profiles we
20 observed in each cohort (figure 3). Upon stratification by sex, we observed stronger associations
21 for decanoylcarnitine, tetradecenoylcarnitine and hexadecenoylcarnitine in girls and a stronger
22 association with PC (C₄₀H₈₀NO₈P) in boys. Associations were similar when preterm and
23 caesarean deliveries were excluded, except for slightly stronger associations with
24 decanoylcarnitine and dodecanoylcarnitine in analysis of vaginal deliveries only.
25
26
27
28
29
30
31
32
33
34
35
36
37
38
39
40
41

42 To test for the potential confounding of our results we additionally adjusted the main model
43 separately by factors that influence birthweight. Additional factors included exposure to PM₁₀,
44 paternal education, smoking continuing into the second trimester and maternal weight gain. We
45 also checked for the confounding effects of mode of delivery and cohort differences in the
46 metabolome data, using the second component of the whole metabolome PCA. As shown in
47 table s3, associations were robust to adjustment by these factors, indicating negligible
48 confounding.
49
50
51
52
53
54
55
56
57
58
59
60

To investigate the role of the metabolome in potentially mediating the effect of risk factors on birthweight, we adjusted a risk factor model of birthweight (including exposure to PM₁₀, maternal and paternal education, smoking continuing into the second trimester and maternal weight gain) by the first five principal components of birthweight associated metabolites (explaining 50.2% of the total variance in the set of 68 metabolites). Of the included risk factors, only the effect size estimate linking birthweight and smoking continuing into the second trimester was decreased upon adjustment on birthweight-related metabolites (table 3). Specifically, while the unadjusted model estimated that babies of mothers who smoked during the second trimester weighed 88.5g (95% confidence interval (CI): -197.6g, 20.5g) less at birth than babies of mothers who did not, that weight loss dropped to 74.0g (95% CI: -170.7g, 22.6g) in the model adjusting for birthweight-related metabolites.

Table 3. Associations of risk factors with birthweight, with and without adjustment for metabolites

| | Risk factor model ^a | Risk factor model, adjusted for birthweight associated metabolome ^b | Risk factor model, adjusted for retinol levels in cord blood ^c |
|--|--------------------------------|--|---|
| | β (95% CI) | β (95% CI) | β (95% CI) |
| Exposure to PM₁₀ during pregnancy | -3.37 (-11.74, 5.00) | -4.97 (-12.40, 2.45) | -2.90 (-11.09, 5.28) |
| Education level of father (ref. primary school) | | | |
| Secondary school | 59.7 (-29.56, 148.96) | 80.83 (2.11, 159.54) | 71.77 (-15.65, 159.19) |
| University or higher | 116.08 (16.18, 215.98) | 126.04 (38.11, 213.97) | 119.19 (21.52, 216.86) |

| | | | |
|--|-------------------------|-------------------------|-------------------------|
| Mother smoked during second trimester | -88.54 (-197.62, 20.54) | -74.02 (-170.69, 22.65) | -45.06 (-153.30, 63.18) |
| maternal weight gain | 12.42 (5.77, 19.07) | 13.87 (8.00, 19.75) | 11.69 (5.18, 18.19) |

- a. Adjusted for gestational age, cohort, maternal height and pre-pregnancy weight, sex of baby and paternal height
- b. Adjusted for gestational age, cohort, maternal height and pre-pregnancy weight, sex of baby and paternal height and first 5 principal components of PCA on all birthweight-associated metabolites.
- c. Adjusted for gestational age, cohort, maternal height and pre-pregnancy weight, sex of baby and paternal height and levels of retinol in cord blood

Linear models investigating the association between the birthweight-associated metabolites and maternal smoking, adjusted for cohort, maternal education and body mass index, showed that only blood retinol levels were significantly different (lower, $p = 4.26 \times 10^{-4}$) among mothers who smoked during the second trimester (figure 4). Based on this observation, we additionally looked at the evolution of association between birthweight risk factors in a model adjusting for retinol levels (table 3). The effect size estimate of smoking on birthweight was halved upon adjustment on retinol levels ($\beta = -45.1\text{g}$, 95% CI: -153.3g, 63.2g). Although these changes are not statistically significant, they indicate that retinol may partly mediate the effects of smoking on birthweight.

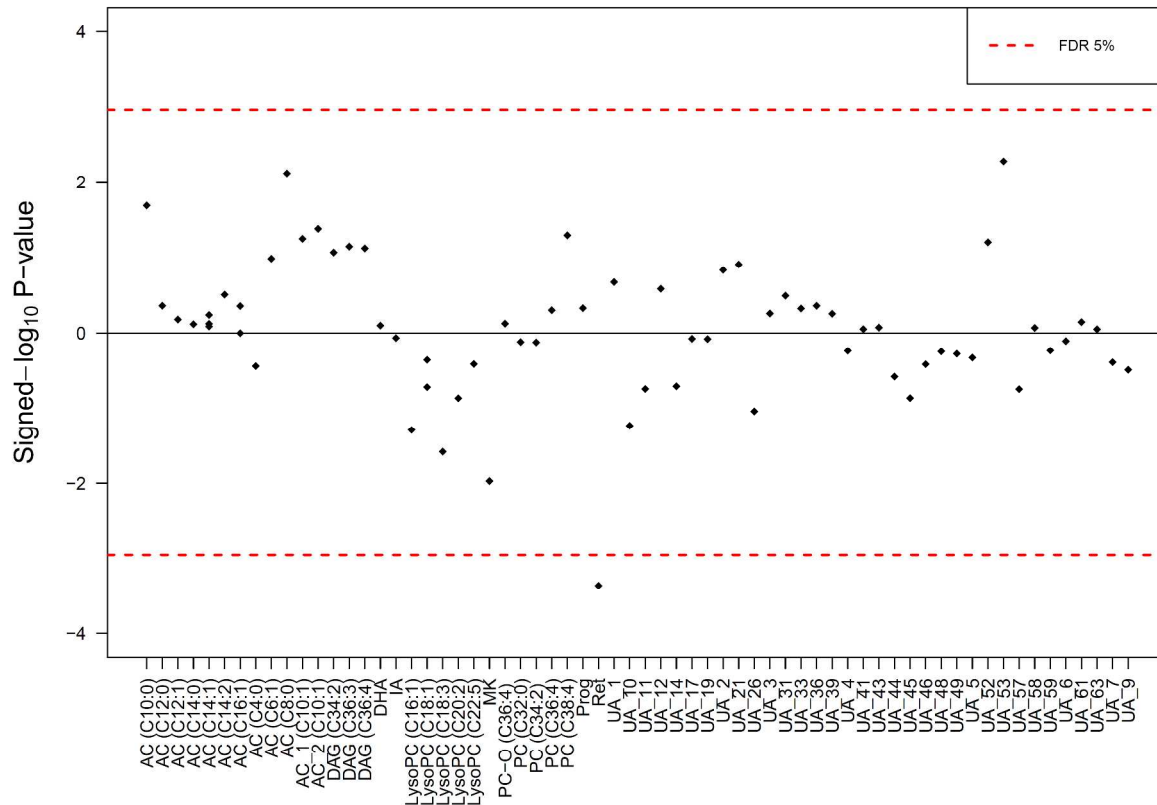


Figure 4: Manhattan Plot showing significance of association ($\log_{10} p$ value) with smoking (continuing into the 2nd trimester) for each birthweight-associated metabolite. Sign of p value indicates direction of association. Abbreviations: AC: acylcarnitine, UA: Unassigned, PC: Phosphatidylcholine, LysoPC: lysophosphatidylcholine, Prog: Progesterone, Ret: Retinol, DAG: Diacylglycerol, IA: Indolelactic acid, MK: methoxykynurenate, DHA: Docosahexaenoic acid. Numbers following unassigned compounds refer to compound numbers (see table S1).

Pathway analysis

Mummichog software assigned tentative annotations to 1629 of the 4714 features analysed and assigned tentative annotations to 30 of the 138 features associated with birthweight (additional dataset 2). Figure 5 shows significantly enriched pathways ($p < 0.05$) identified using *mummichog*. We observed enrichment of eight different pathways, two of these involve the synthesis and metabolism of signalling molecules, prostaglandins and steroid hormones, known to be involved in embryogenesis and child birth.

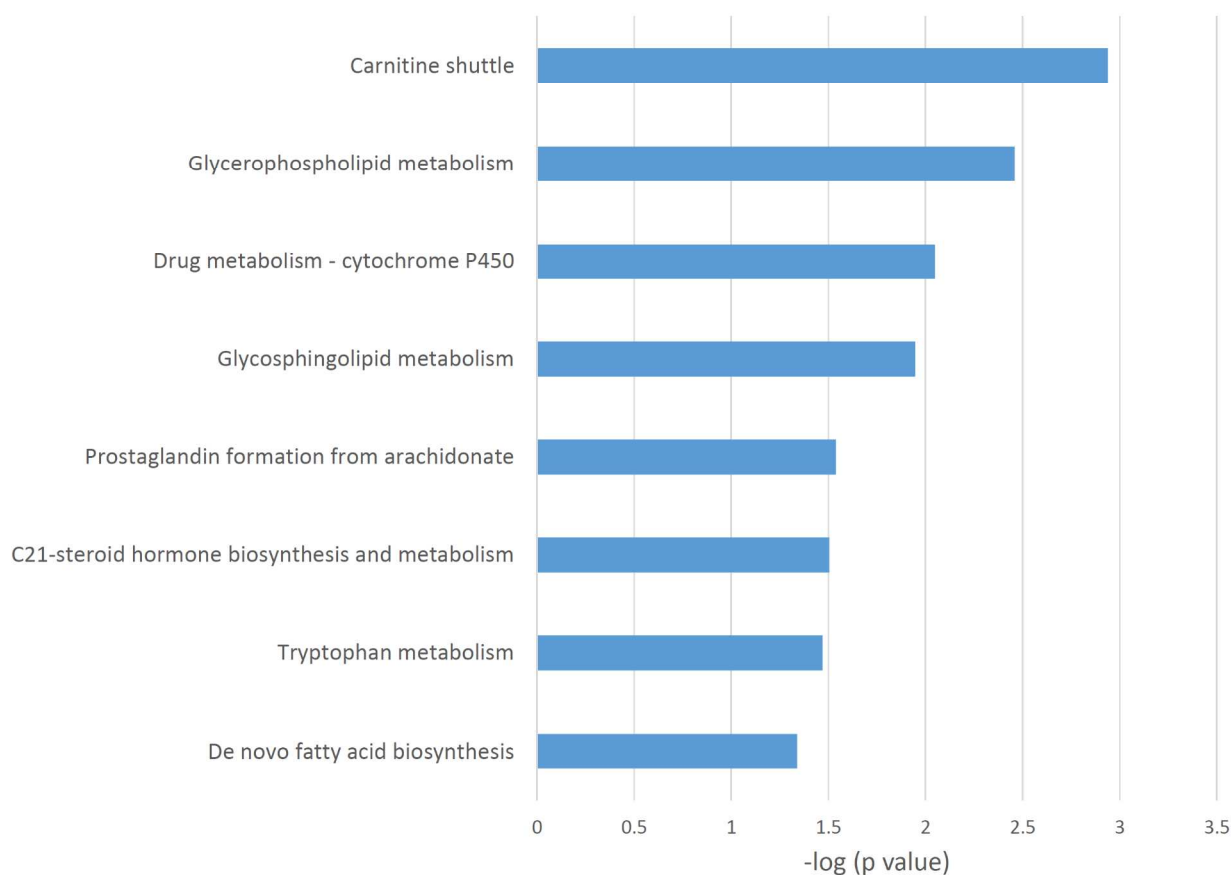


Figure 5: Metabolic Pathways significantly associated ($p < 0.05$) with birthweight in enrichment analysis.

Discussion

This is the largest study to date investigating untargeted metabolic profiles of cord blood associated with birth related outcomes, including weight at birth. Variance in birthweight, a trait that reflects the in uterine conditions throughout pregnancy and is an important predictor of health later in life, is determined by a complex combination of factors. Twin studies demonstrated the majority of these factors are of environmental origin³². Here, we have shown a metabolic signature associated with birthweight, after controlling for hereditary factors such as parental size, among healthy deliveries from the general European population. We observed changes in levels of vitamin A, progesterone, and molecules involved in pathways related to tryptophan metabolism, carnitine shuttle, fatty acid and glycerophospholipid metabolism.

Levels of vitamin A were higher with higher birthweight, confirming findings from previous studies³³⁻³⁶. Vitamin A likely promotes fetal growth through its role in cell proliferation and embryogenesis and interaction with nuclear receptors to alter gene expression³⁷. While our results are consistent with changes in cord blood levels of vitamin A associated with smoking previously reported³⁸, this is the first study to the best of our knowledge that has demonstrated a link between vitamin A and both smoking and birth weight in the same population. Cigarette smoke has been shown to induce vitamin A depletion in animal models, and has been proposed to result from the induction of the CYP1A1 and CYP1A2 enzymes and the subsequent increase in catabolism of retinoic acid³⁹. Vitamin A depletion therefore, may present an important aetiological pathway linking smoking with lower birthweight, which should be further investigated.

Progesterone levels were down-regulated with increasing birthweight. This corroborates findings from a recent targeted study of hormone levels in cord blood among Chinese and American births⁴⁰. Progesterone is the major progestational hormone involved throughout all

1
2
3 stages of pregnancy. It is required for implantation, maintaining intrauterine conditions and
4
5 initiating the signalling cascade to induce labour. Evidence for the relationship of progesterone
6
7 measured earlier in pregnancy and birthweight is inconsistent⁴¹⁻⁴³. However, levels of
8
9 progesterone in cord blood appear unrelated to levels measured in maternal plasma earlier in
10
11 pregnancy⁴⁴. This reflects the transition in endocrine metabolism during fetal development, with
12
13 the fetal endocrine system being well developed by late pregnancy. Pregnenolone, the precursor
14
15 in the production of progesterone by the placenta, is transported to the fetus for metabolism of
16
17 large quantities of C-19 steroid hormones by the fetal adrenal glands, which in turn signal back
18
19 to regulate hormonal production by the maternal and placental systems⁴⁵. The size of the fetus
20
21 may influence production of molecules such as progesterone around the time of labour onset, for
22
23 instance, to increase muscle contractibility during delivery. Furthermore, increased activity of the
24
25 fetal endocrine system in larger babies may reduce availability of pregnenolone for progesterone
26
27 production.
28
29
30
31
32

33 We observed a negative association with birthweight and methoxykynurenate and indolelactic
34
35 acid. These metabolites, never previously associated with birthweight, are both final products of
36
37 tryptophan metabolism, albeit through different routes, the kynurenine and indole pathways.
38
39 Tryptophan itself was identified among the annotated features, and although there was no
40
41 statistically significant association between the amino acid and birthweight ($p = 0.07$), our results
42
43 indicate altered utilisation of tryptophan. Progesterone has been demonstrated to regulate
44
45 tryptophan metabolism through inhibition of Trp 2,3-dioxygenase⁴⁶. Tryptophan is essential
46
47 throughout pregnancy firstly to meet the demand for protein synthesis during fetal development;
48
49 to meet serotonin and kynurenine requirements; and to ultimately provide quinolinate for the
50
51 production of NAD^+ , which plays a key role in mitochondrial function⁴⁷. All these requirements
52
53
54
55
56
57
58
59
60

1
2
3 will increase with greater fetal growth, thereby leaving less free tryptophan for conversion into
4 methoxykynurenate and indolelactic acid. Similar results were reported by Favretto et al⁴⁸ who
5 observed higher levels of tryptophan and lower levels of kynurenine in cord blood of intrauterine
6 growth restricted babies. Animal experiments have showed cord blood levels of tryptophan to be
7 related to maternal plasma levels⁴⁹ suggesting that cord blood levels may reflect tryptophan
8 utilisation earlier in pregnancy. Therefore, monitoring of tryptophan metabolism throughout
9 pregnancy may have utility in tracking the health of the developing fetus. Similarly, lower levels
10 of multiple acylcarnitine species (C4, C6, C8, C10, C12, C14, and C16) were associated with
11 increased birthweight, likely reflecting differences in energy utilization during development.
12 Carnitine is an essential factor in fatty acid metabolism and its most important known metabolic
13 function is to transport fatty acids into the mitochondria of cells for β -oxidation⁵⁰. The placenta
14 has a high activity of fatty acid oxidation enzymes⁵¹ and where defects in long-chain fatty acid
15 oxidation are noted, there is a higher frequency of small for gestation age babies⁵². Walsh et al⁵³
16 reported higher levels of acylcarnitines, including dodecanoylcarnitine identified in this study, in
17 cord blood of infants asphyxiated during pregnancy, emphasising their importance to healthy
18 fetal development. Clemente et al.⁵⁴ recently demonstrated in the INMA and ENVIRONAGE
19 cohorts that placental mitochondrial DNA content is associated with birthweight and may
20 mediate the effects of environmental toxicants on birthweight. This supports our findings of the
21 importance of metabolic pathways related to mitochondrial function. Mitochondria are
22 particularly susceptible to oxidative stress and therefore may play a key role linking the fetal
23 environment to growth.

24
25
26 The ω -3 fatty acid DHA has long been thought to be beneficial to fetal growth and recent
27 randomized control trials have found that taking DHA supplements by pregnant women was
28
29
30
31
32
33
34
35
36
37
38
39
40
41
42
43
44
45
46
47
48
49
50
51
52
53
54
55
56
57
58
59
60

1
2
3 associated with increases in gestational length and birthweight⁵⁵⁻⁵⁶. Here, we observed a
4
5 seemingly paradoxical negative association between cord blood DHA levels and birthweight.
6
7 However, it has been reported that DHA intake by the mother explains only a small proportion of
8
9 variance in DHA levels in cord blood⁵⁷, with the rest presumably explained by endogenous
10
11 processes. Reduced DHA levels in cord blood would result from increased utilization in central
12
13 nervous tissues and from greater eicosanoid metabolism. We found DHA levels to be associated
14
15 with a cluster of metabolites tentatively assigned as diacylglycerols, which are molecules
16
17 required for the production of arachidonic acid, an ω -6 fatty acid also involved in eicosanoid
18
19 metabolism. Together these results highlight the role of long-chain fatty acid and potentially
20
21 eicosanoid metabolism in fetal growth. Eicosanoids, in particular prostaglandins, are produced
22
23 throughout pregnancy and play a role in regulating the maternal cardiovascular system, and like
24
25 progesterone, are involved in signalling the onset of labour. Glycerophospholipids also showed
26
27 significant disruption, indicating a variety of processes occurring in association with these
28
29 molecular species. The lysoPCs were positively associated with birthweight and were negatively
30
31 correlated with DHA and the diacylglycerols, suggesting some metabolic dependency. Positive
32
33 associations between birthweight and lysoPCs have also been recently reported in a targeted
34
35 analysis¹⁷. On the other hand, the PCs were associated with lower birthweight. This could reflect
36
37 some cell membrane damage leading to the subsequent release of phospholipids, which have a
38
39 variety of different proposed biological properties⁵⁸. There is also recent evidence of
40
41 antiphospholipid antibodies (and complement activation) co-operating in triggering a local
42
43 inflammatory process⁵⁹ which may be linked to suboptimal fetal development.
44
45
46
47
48
49
50

51 We have complemented classical laboratory-based metabolic feature annotation in this study
52
53 with the use of the recently developed *mummichog* algorithm to extract additional biological
54
55
56
57
58
59
60

1
2
3 information at the pathway level. Since the method matches metabolic features to pathways
4 based on annotation through exact mass only, and does not account for any other physio-
5 chemical identifiers, results of these analyses should be interpreted with caution. However, since
6 feature misidentification likely applies equally to both the numerator (significant features) and
7 denominator (total features detected) in enrichment analyses, the impact of wrong annotation
8 may be less dramatic at the pathway level. We found that the majority of pathways identified,
9 including tryptophan metabolism, carnitine shuttle, glycerophospholipid metabolism and C-21
10 steroid hormone biosynthesis, were supported by the laboratory annotation of metabolites.
11
12
13
14
15
16
17
18
19
20

21 Recent evidence indicates an effect of birthweight on later metabolic profile ⁶⁰, with
22 similarities to profiles associated with weight status measured at later life stages, suggesting that
23 the metabolic profile of an individual at the start of life may persist into later life, with
24 implications for health throughout the life course. Therefore, one may speculate that metabolic
25 pathways identified in this study may provide a link between the observed associations with
26 birthweight and disease in adult life. In particular, *in utero* levels of progesterone could
27 plausibly mediate the observed association between high birthweight and later development of
28 breast cancer⁶, as evidence is emerging that progesterone in adult life has a protective effect on
29 breast cancer ⁶¹. Conversely, tryptophan levels may play a role in the association between lower
30 birthweight and increased risk of cardio-metabolic disease in later life, since tryptophan have
31 been found to be predictive of subsequent development of type II diabetes in adult cohorts⁶².
32 Following up current birth cohorts to adult life would be of great value to investigate these
33 questions.
34
35
36
37
38
39
40
41
42
43
44
45
46
47
48
49
50

51 The main limitation of this study was related to its use of cord blood. Since samples were by
52 necessity collected at the time of delivery, the study was cross-sectional in nature and therefore it
53
54
55
56
57
58
59
60

1
2
3 was difficult to disentangle whether perturbed metabolites were a cause or a result of variance in
4
5 birthweight. However, cord blood provides a window into the direct supply of nutrients and other
6
7 essential molecules to the developing fetus, and it also provides a snapshot of metabolism at the
8
9 start of life. Our study was limited in scope to investigate changes specifically associated with
10
11 low birthweight (<2500g) babies since we sampled from across the general population of births.
12
13 However, the generalisability of our results, also considering the large number of samples
14
15 collected from birth cohorts from across Europe, is a strength. Although any single
16
17 metabolomics method cannot cover all the molecules of the cord blood metabolome, the
18
19 UHPLC-MS platform we used represents a highly sensitive analytical technique able to measure
20
21 hundreds to thousands of metabolites. Future work may include the incorporation of
22
23 complementary metabolomics methods, other 'omic approaches such as DNA methylation
24
25 analysis and multiplex analysis of cytokines, which are of interest due to their role in mediating
26
27 hormonal signalling, and exploring the role of the cord blood metabolome in postnatal growth
28
29 and development.
30
31
32
33
34
35

36 Conclusions

37 We have described metabolic profiles associated with birthweight among normal deliveries,
38
39 highlighting the role of multiple metabolites in various pathways including tryptophan
40
41 metabolism, fatty acid and glycerophospholipid metabolism and hormonal signalling. These
42
43 results will have implications for antenatal and perinatal care, improve understanding of the
44
45 pathways through which fetal growth may be affected and may have implications for health in
46
47 later life.
48
49
50
51
52
53
54
55
56
57
58
59
60

1
2
3 SUPPORTING INFORMATION:
4
5

6 The following files are available free of charge at ACS website <http://pubs.acs.org>:
7
8

9
10 Figure S1. Directed acyclical graph to visualise assumptions regarding covariate, metabolome
11 and birthweight relationships.
12
13

14
15 Figure S2. Whole metabolome principal component analysis
16
17

18
19 Table S1. All metabolomic features significantly associated with birthweight
20
21

22 Table S2. Stratified analysis by cohort, sex of baby and excluding caesarean and preterm (<37
23 weeks gestational age) deliveries
24
25

26
27 Table S3. Metabolite associations with birthweight, with adjustment for additional covariates.
28
29

30
31 Additional Dataset 1: Chromatograms and spectra.xls
32
33

34 Additional Dataset 2: Mummichog annotation.xls
35
36
37
38

39 AUTHOR INFORMATION
40
41

42
43 **Corresponding Author**
44

45 * Corresponding author: MRC-PHE Centre for Environment and Health, School of Public
46 Health, Imperial College London, St Mary's Campus, Norfolk Place, London W2 1PG.
47
48 o.robinson@imperial.ac.uk
49
50

51
52
53 **Author Contributions**
54
55
56
57
58
59
60

1
2
3 The manuscript was written through contributions of all authors. All authors have given approval
4 to the final version of the manuscript. ‡These authors contributed equally
5
6
7

8 **Funding Sources**

9
10
11 This work has been supported by the Exposomics EC FP7 grant (Grant agreement no: 308610).
12
13 Data collection in the INMA Sabadell cohort was funded by grants from Instituto de Salud
14 Carlos III (Red INMA G03/176) and the Generalitat de Catalunya (CIRIT 1999SGR 00241). OR
15
16 was supported by an MRC Early Career Fellowship. ISGlobal is a member of the CERCA
17
18 Programme, Generalitat de Catalunya. Piccolipiù was partially funded by the Italian National
19
20 Centre for Disease Prevention and Control and by the Italian Ministry of Health.
21
22
23
24
25

26 REFERENCES

- 27
28
29
30
31
32 1. Seeds, J. W.; Peng, T., Impaired growth and risk of fetal death: is the tenth percentile the
33 appropriate standard? *American journal of obstetrics and gynecology* **1998**, *178* (4), 658-69.
34
35
36
37 2. Ong, K. K.; Ahmed, M. L.; Emmett, P. M.; Preece, M. A.; Dunger, D. B., Association
38 between postnatal catch-up growth and obesity in childhood: prospective cohort study. *BMJ*
39 *(Clinical research ed.)* **2000**, *320* (7240), 967-71.
40
41
42
43
44 3. Goldenberg, R. L.; DuBard, M. B.; Cliver, S. P.; Nelson, K. G.; Blankson, K.; Ramey, S.
45 L.; Herman, A., Pregnancy outcome and intelligence at age five years. *American journal of*
46 *obstetrics and gynecology* **1996**, *175* (6), 1511-5.
47
48
49
50
51
52 4. Barker, D. J.; Osmond, C.; Kajantie, E.; Eriksson, J. G., Growth and chronic disease:
53 findings in the Helsinki Birth Cohort. *Annals of human biology* **2009**, *36* (5), 445-58.
54
55
56
57
58
59
60

1
2
3 5. Nilsen, T. I.; Romundstad, P. R.; Troisi, R.; Potischman, N.; Vatten, L. J., Birth size and
4 colorectal cancer risk: a prospective population based study. *Gut* **2005**, *54* (12), 1728-32.
5
6

7
8 6. Ahlgren, M.; Melbye, M.; Wohlfahrt, J.; Sorensen, T. I., Growth patterns and the risk of
9 breast cancer in women. *The New England journal of medicine* **2004**, *351* (16), 1619-26.
10
11

12
13 7. Iniguez, C.; Ballester, F.; Costa, O.; Murcia, M.; Souto, A.; Santa-Marina, L.;
14 Aurrekoetxea, J. J.; Espada, M.; Vrijheid, M.; Alvarez-Avellon, S. M.; Alvarez-Pedrerol, M.;
15 Rebagliato, M., Maternal smoking during pregnancy and fetal biometry: the INMA Mother and
16 Child Cohort Study. *American journal of epidemiology* **2013**, *178* (7), 1067-75.
17
18
19
20
21

22
23 8. Pedersen, M.; Giorgis-Allemand, L.; Bernard, C.; Aguilera, I.; Andersen, A. M. N.;
24 Ballester, F.; Beelen, R. M. J.; Chatzi, L.; Cirach, M.; Danileviciute, A.; Dedele, A.; Eijsden, M.
25 V.; Estarlich, M.; Fernández-Somoano, A.; Fernández, M. F.; Forastiere, F.; Gehring, U.;
26 Grazuleviciene, R.; Gruzieva, O.; Heude, B.; Hoek, G.; Hoogh, K. D.; van den Hooven, E. H.;
27 Håberg, S. E.; Jaddoe, V. W. V.; Klümper, C.; Korek, M.; Krämer, U.; Lerchundi, A.; Lepeule,
28 J.; Nafstad, P.; Nystad, W.; Patelarou, E.; Porta, D.; Postma, D.; Raaschou-Nielsen, O.; Rudnai,
29 P.; Sunyer, J.; Stephanou, E.; Sørensen, M.; Thiering, E.; Tuffnell, D.; Varró, M. J.; Vrijkotte, T.
30 G. M.; Wijga, A.; Wilhelm, M.; Wright, J.; Nieuwenhuijsen, M. J.; Pershagen, G.; Brunekreef,
31 B.; Kogevinas, M.; Slama, R., Ambient air pollution and low birthweight: A European cohort
32 study (ESCAPE). *The Lancet Respiratory Medicine* **2013**, *1*, 695-704.
33
34
35
36
37
38
39
40
41
42
43
44
45
46
47

48 9. Govarts, E.; Nieuwenhuijsen, M.; Schoeters, G.; Ballester, F.; Bloemen, K.; de Boer, M.;
49 Chevrier, C.; Eggesbo, M.; Guxens, M.; Kramer, U.; Legler, J.; Martinez, D.; Palkovicova, L.;
50 Patelarou, E.; Ranft, U.; Rautio, A.; Petersen, M. S.; Slama, R.; Stigum, H.; Toft, G.; Trnovec,
51 T.; Vandentorren, S.; Weihe, P.; Kuperus, N. W.; Wilhelm, M.; Wittsiepe, J.; Bonde, J. P., Birth
52
53
54
55
56
57
58
59
60

1
2
3 weight and prenatal exposure to polychlorinated biphenyls (PCBs) and
4 dichlorodiphenyldichloroethylene (DDE): a meta-analysis within 12 European Birth Cohorts.
5
6 *Environmental health perspectives* **2012**, *120* (2), 162-70.
7

8
9
10 10. Fanos, V.; Atzori, L.; Makarenko, K.; Melis, G. B.; Ferrazzi, E., Metabolomics
11 application in maternal-fetal medicine. *BioMed research international* **2013**, *9* pages, vol 2013.
12 *doi:10.1155/2013/72051411*. Horgan, R. P.; Broadhurst, D. I.; Walsh, S. K.; Dunn, W. B.;
13 Brown, M.; Roberts, C. T.; North, R. A.; McCowan, L. M.; Kell, D. B.; Baker, P. N.; Kenny, L.
14 C., Metabolic Profiling Uncovers a Phenotypic Signature of Small for Gestational Age in Early
15 Pregnancy. *Journal of Proteome Research* **2011**, *10* (8), 3660-3673.
16
17
18
19
20
21
22
23

24
25 12. Maitre, L.; Fthenou, E.; Athersuch, T.; Coen, M.; Toledano, M. B.; Holmes, E.;
26 Kogevinas, M.; Chatzi, L.; Keun, H. C., Urinary metabolic profiles in early pregnancy are
27 associated with preterm birth and fetal growth restriction in the Rhea mother-child cohort study.
28 *BMC medicine* **2014**, *12*, 110.
29
30
31
32
33

34
35 13. Maitre, L.; Villanueva, C. M.; Lewis, M. R.; Ibarluzea, J.; Santa-Marina, L.; Vrijheid,
36 M.; Sunyer, J.; Coen, M.; Toledano, M. B., Maternal urinary metabolic signatures of fetal growth
37 and associated clinical and environmental factors in the INMA study. *BMC Medicine* **2016**, *14*,
38 177.
39
40
41
42
43
44

45 14. Dessì, A.; Atzori, L.; Noto, A.; Adriaan Visser, G. H.; Gazzolo, D.; Zanardo, V.;
46 Barberini, L.; Puddu, M.; Ottonello, G.; Atzei, A.; Magistris, A. D.; Lussu, M.; Murgia, F.;
47 Fanos, V., Metabolomics in newborns with intrauterine growth retardation (IUGR): urine reveals
48 markers of metabolic syndrome. *The Journal of Maternal-Fetal & Neonatal Medicine* **2011**, *24*
49 (sup2), 35-39.
50
51
52
53
54
55
56
57
58
59
60

- 1
2
3 15. Ivorra, C.; García-Vicent, C.; Chaves, F. J.; Monleón, D.; Morales, J. M.; Lurbe, E.,
4
5 Metabolomic profiling in blood from umbilical cords of low birth weight newborns. *Journal of*
6
7 *Translational Medicine* **2012**, *10*, 142.
8
9
10
11 16. Tea, I.; Le Gall, G. n. I.; K??ster, A.; Guignard, N.; Alexandre-Gouabau, M. C. c.;
12
13 Darmaun, D.; Robins, R. J., ¹H-NMR-based metabolic profiling of maternal and umbilical cord
14
15 blood indicates altered materno-foetal nutrient exchange in preterm infants. *PLOS ONE* **2012**
16
17 *7*(1): e29947. <https://doi.org/10.1371/journal.pone.0029947>
18
19
20
21 17. Hellmuth, C.; Uhl, O.; Standl, M.; Demmelmair, H.; Heinrich, J.; Koletzko, B.; Thiering,
22
23 E., Cord Blood Metabolome Is Highly Associated with Birth Weight, but Less Predictive for
24
25 Later Weight Development. *Obesity Facts* **2017**, *10* (2), 85-100.
26
27
28
29 18. Vineis, P.; Chadeau-Hyam, M.; Gmuender, H.; Gulliver, J.; Herceg, Z.; Kleinjans, J.;
30
31 Kogevinas, M.; Kyrtopoulos, S.; Nieuwenhuijsen, M.; Phillips, D. H.; Probst-Hensch, N.;
32
33 Scalbert, A.; Vermeulen, R.; Wild, C. P., The exposome in practice: Design of the
34
35 EXPOsOMICS project. *International journal of hygiene and environmental health* **2017**, *Volume*
36
37 *220*, Issue 2, Part A, 142-151
38
39
40
41 19. Janssen, B. G.; Madlhoum, N.; Gyselaers, W.; Bijns, E.; Clemente, D. B.; Cox, B.;
42
43 Hogervorst, J.; Luyten, L.; Martens, D. S.; Peusens, M.; Plusquin, M.; Provost, E. B.; Roels, H.
44
45 A.; Saenen, N. D.; Tsamou, M.; Vriens, A.; Winckelmans, E.; Vrijens, K.; Nawrot, T. S., Cohort
46
47 Profile: The ENVIRonmental influence ON early AGEing (ENVIRONAGE): a birth cohort
48
49 study. *International journal of epidemiology* **2017**. *Volume 46*, Issue 5, 1 1386–1387m,
50
51 <https://doi.org/10.1093/ije/dyw269>
52
53
54
55
56
57
58
59
60

1
2
3 20. Farchi, S.; Forastiere, F.; Vecchi Brumatti, L.; Alviti, S.; Arnofi, A.; Bernardini, T.; Bin,
4 M.; Brescianini, S.; Colelli, V.; Cotichini, R.; Culasso, M.; De Bartolo, P.; Felice, L.; Fiano, V.;
5 Fioritto, A.; Frizzi, A.; Gagliardi, L.; Giorgi, G.; Grasso, C.; La Rosa, F.; Loganes, C.; Lorusso,
6 P.; Martini, V.; Merletti, F.; Medda, E.; Montelatici, V.; Mugelli, I.; Narduzzi, S.; Nistico, L.;
7 Penna, L.; Piscianz, E.; Piscicelli, C.; Poggesi, G.; Porta, D.; Ranieli, A.; Rapisardi, G.; Rasulo,
8 A.; Richiardi, L.; Rusconi, F.; Serino, L.; Stazi, M. A.; Toccaceli, V.; Todros, T.; Tognin, V.;
9 Trevisan, M.; Valencic, E.; Volpi, P.; Zirolì, V.; Ronfani, L.; Di Lallo, D., Piccolipiu, a
10 multicenter birth cohort in Italy: protocol of the study. *BMC pediatrics* **2014**, *14*, 36.
11
12
13
14
15
16
17
18
19
20
21

22 21. Guxens, M.; Ballester, F.; Espada, M.; Fernandez, M. F.; Grimalt, J. O.; Ibarluzea, J.;
23 Olea, N.; Rebagliato, M.; Tardon, A.; Torrent, M.; Vioque, J.; Vrijheid, M.; Sunyer, J., Cohort
24 Profile: the INMA--Infancia y Medio Ambiente--(Environment and Childhood) Project.
25 *International journal of epidemiology* **2012**, *41* (4), 930-40.
26
27
28
29
30
31

32 22. Chatzi, L.; Plana, E.; Daraki, V.; Karakosta, P.; Alekakis, D.; Tsatsanis, C.; Kafatos, A.;
33 Koutis, A.; Kogevinas, M., Metabolic syndrome in early pregnancy and risk of preterm birth.
34 *American journal of epidemiology* **2009**, *170* (7), 829-36.
35
36
37
38
39

40 23. Wang, M.; Beelen, R.; Basagana, X.; Becker, T.; Cesaroni, G.; de Hoogh, K.; Dedele, A.;
41 Declercq, C.; Dimakopoulou, K.; Eeftens, M.; Forastiere, F.; Galassi, C.; Grazuleviciene, R.;
42 Hoffmann, B.; Heinrich, J.; Iakovides, M.; Kunzli, N.; Korek, M.; Lindley, S.; Molter, A.;
43 Mosler, G.; Madsen, C.; Nieuwenhuijsen, M.; Phuleria, H.; Pedeli, X.; Raaschou-Nielsen, O.;
44 Ranzi, A.; Stephanou, E.; Sugiri, D.; Stempfelet, M.; Tsai, M. Y.; Lanki, T.; Udvardy, O.; Varro,
45 M. J.; Wolf, K.; Weinmayr, G.; Yli-Tuomi, T.; Hoek, G.; Brunekreef, B., Evaluation of land use
46
47
48
49
50
51
52
53
54
55
56
57
58
59
60

1
2
3 regression models for NO₂ and particulate matter in 20 European study areas: the ESCAPE
4 project. *Environmental science & technology* **2013**, *47* (9), 4357-64.
5
6

7
8 24. Lazar, C. *imputeLCMD: A collection of methods for left-censored missing data*
9 *imputation. R package, 2.0*; **2015**. <https://CRAN.R-project.org/package=imputeLCMD>
10
11

12
13 25. Campanella, G. *omics: '--omics' Data Analysis Toolbox. R package version 0.1-4.*; **2016**.
14 <https://CRAN.R-project.org/package=omics>
15
16

17
18 26. R Core Team *R: A language and environment for statistical computing.*, Vienna, Austria.
19
20 , **2016**. <https://www.R-project.org/>
21
22

23
24 27. Wishart, D. S.; Jewison, T.; Guo, A. C.; Wilson, M.; Knox, C.; Liu, Y.; Djoumbou, Y.;
25
26 Mandal, R.; Aziat, F.; Dong, E.; Bouatra, S.; Sinelnikov, I.; Arndt, D.; Xia, J.; Liu, P.; Yallou,
27
28 F.; Bjorn Dahl, T.; Perez-Pineiro, R.; Eisner, R.; Allen, F.; Neveu, V.; Greiner, R.; Scalbert, A.,
29
30 HMDB 3.0--The Human Metabolome Database in 2013. *Nucleic acids research* **2013**, *41*
31
32 (Database issue), D801-7.
33
34

35
36 28. Smith, C. A.; O'Maille, G.; Want, E. J.; Qin, C.; Trauger, S. A.; Brandon, T. R.;
37
38 Custodio, D. E.; Abagyan, R.; Siuzdak, G., METLIN: a metabolite mass spectral database.
39
40 *Therapeutic drug monitoring* **2005**, *27* (6), 747-51.
41
42

43
44 29. Li, L.; Li, R.; Zhou, J.; Zuniga, A.; Stanislaus, A. E.; Wu, Y.; Huan, T.; Zheng, J.; Shi,
45
46 Y.; Wishart, D. S.; Lin, G., MyCompoundID: Using an Evidence-Based Metabolome Library for
47
48 Metabolite Identification. *Analytical Chemistry* **2013**, *85* (6), 3401-3408.
49
50

51
52 30. Sumner, L. W.; Amberg, A.; Barrett, D.; Beale, M. H.; Beger, R.; Daykin, C. A.; Fan, T.
53
54 W. M.; Fiehn, O.; Goodacre, R.; Griffin, J. L.; Hankemeier, T.; Hardy, N.; Harnly, J.; Higashi,
55
56

1
2
3 R.; Kopka, J.; Lane, A. N.; Lindon, J. C.; Marriott, P.; Nicholls, A. W.; Reily, M. D.; Thaden, J.
4
5 J.; Viant, M. R., Proposed minimum reporting standards for chemical analysis: Chemical
6
7 Analysis Working Group (CAWG) Metabolomics Standards Initiative (MSI). *Metabolomics*
8
9 **2007**, *3*, 211-221.

10
11
12
13 31. Li, S.; Park, Y.; Duraisingham, S.; Strobel, F. H.; Khan, N.; Soltow, Q. A.; Jones, D. P.;
14
15 Pulendran, B., Predicting Network Activity from High Throughput Metabolomics. *PLoS*
16
17 *Computational Biology* **2013**, *9*(7): e1003123. <https://doi.org/10.1371/journal.pcbi.1003123>

18
19
20
21 32. Dubois, L.; Ohm Kyvik, K.; Girard, M.; Tatone-Tokuda, F.; Pérusse, D.; Hjelmberg, J.;
22
23 Skytthe, A.; Rasmussen, F.; Wright, M. J.; Lichtenstein, P.; Martin, N. G., Genetic and
24
25 environmental contributions to weight, height, and bmi from birth to 19 years of age: An
26
27 international study of over 12,000 twin pairs. *PLoS ONE* **2012**, (2): e30153.
28
29 <https://doi.org/10.1371/journal.pone.0030153>

30
31
32
33 33. Masters, E. T.; Jedrychowski, W.; Schleicher, R. L.; Tsai, W. Y.; Tu, Y. H.; Camann, D.;
34
35 Tang, D.; Perera, F. P., Relation between prenatal lipid-soluble micronutrient status,
36
37 environmental pollutant exposure, and birth outcomes. *The American journal of clinical nutrition*
38
39 **2007**, *86* (4), 1139-45.

40
41
42
43 34. Rondo, P. H.; Abbott, R.; Tomkins, A. M., Vitamin A and neonatal anthropometry.
44
45 *Journal of tropical pediatrics* **2001**, *47* (5), 307-10.

46
47
48
49 35. Gazala, E.; Sarov, B.; Hershkovitz, E.; Edvardson, S.; Sklan, D.; Katz, M.; Friger, M.;
50
51 Gorodischer, R., Retinol concentration in maternal and cord serum: its relation to birth weight in
52
53 healthy mother-infant pairs. *Early human development* **2003**, *71* (1), 19-28.

1
2
3 36. Ghebremeskel, K.; Burns, L.; Burden, T. J.; Harbige, L.; Costeloe, K.; Powell, J. J.;
4 Crawford, M., Vitamin A and related essential nutrients in cord blood: relationships with
5 anthropometric measurements at birth. *Early human development* **1994**, *39* (3), 177-88.
6
7

8
9
10 37. Clagett-Dame, M.; DeLuca, H. F., The role of vitamin A in mammalian reproduction and
11 embryonic development. *Annual review of nutrition* **2002**, *22*, 347-81.
12
13

14
15 38. Chelchowska, M.; Ambroszkiewicz, J.; Gajewska, J.; Laskowska-Klita, T.; Leibschang,
16 J., The effect of tobacco smoking during pregnancy on plasma oxidant and antioxidant status in
17 mother and newborn. *European journal of obstetrics, gynecology, and reproductive biology*
18 **2011**, *155* (2), 132-6.
19
20
21
22

23
24 39. Li, T.; Molteni, A.; Latkovich, P.; Castellani, W.; Baybutt, R. C., Vitamin A Depletion
25 Induced by Cigarette Smoke Is Associated with the Development of Emphysema in Rats. *The*
26 *Journal of Nutrition* **2003**, *133* (8), 2629-2634.
27
28
29
30

31
32 40. Lagiou, P.; Samoli, E.; Hsieh, C. C.; Lagiou, A.; Xu, B.; Yu, G. P.; Onoyama, S.; Chie,
33 L.; Adami, H. O.; Vatten, L. J.; Trichopoulos, D.; Williams, M. A., Maternal and cord blood
34 hormones in relation to birth size. *European Journal of Epidemiology* **2014**, *29*, 343-351.
35
36
37
38

39
40 41. Hartwig, I. R.; Pincus, M. K.; Diemert, A.; Hecher, K.; Arck, P. C., Sex-specific effect of
41 first-trimester maternal progesterone on birthweight. *Human reproduction (Oxford, England)*
42 **2013**, *28* (1), 77-86.
43
44
45
46

47
48 42. He, S.; Allen, J. C., Jr.; Malhotra, R.; Ostbye, T.; Tan, T. C., Association of maternal
49 serum progesterone in early pregnancy with low birth weight and other adverse pregnancy
50 outcomes. *The journal of maternal-fetal & neonatal medicine : the official journal of the*
51
52
53
54
55
56

1
2
3 *European Association of Perinatal Medicine, the Federation of Asia and Oceania Perinatal*
4 *Societies, the International Society of Perinatal Obstet* **2016**, 29 (12), 1999-2004.

5
6
7
8 43. Mucci, L. A.; Lagiou, P.; Tamimi, R. M.; Hsieh, C. C.; Adami, H. O.; Trichopoulos, D.,
9
10 Pregnancy estriol, estradiol, progesterone and prolactin in relation to birth weight and other birth
11 size variables (United States). *Cancer causes & control : CCC* **2003**, 14 (4), 311-8.

12
13
14
15
16 44. Lagiou, P.; Hsieh, C. C.; Samoli, E.; Lagiou, A.; Xu, B.; Yu, G. P.; Onoyama, S.; Chie,
17
18 L.; Vatten, L. J.; Adami, H. O.; Trichopoulos, D.; Williams, M. A., Associations of placental
19 weight with maternal and cord blood hormones. *Annals of epidemiology* **2013**, 23 (11), 669-73.

20
21
22
23
24 45. Tal, R.; Taylor, H.; Burney, R.; al., e., Endocrinology of Pregnancy. [Updated 2015 Dec
25
26 7]. . In *Endotext [Internet]*, De Groot, L.; Chrousos, G.; Dungan, K.; al, e., Eds. MDText.com,
27
28 Inc.: South Dartmouth (MA), 2000. Available from:
29
30 <https://www.ncbi.nlm.nih.gov/books/NBK278962/>

31
32
33
34 46. Badawy, A. A., Effects of pregnancy on tryptophan metabolism and disposition in the rat.
35
36 *The Biochemical journal* **1988**, 255 (1), 369-72.

37
38
39 47. Badawy, A. a.-B., The tryptophan utilization concept in pregnancy. *Obstetrics &*
40
41 *gynecology science* **2014**, 57, 249-59.

42
43
44
45 48. Favretto, D.; Cosmi, E.; Ragazzi, E.; Visentin, S.; Tucci, M.; Fais, P.; Cecchetto, G.;
46
47 Zanardo, V.; Viel, G.; Ferrara, S. D., Cord blood metabolomic profiling in intrauterine growth
48
49 restriction. *Analytical and Bioanalytical Chemistry* **2012**, 402, 1109-1121.

1
2
3 49. Tsuji, A.; Nakata, C.; Sano, M.; Fukuwatari, T.; Shibata, K., L-Tryptophan Metabolism
4 in Pregnant Mice Fed a High L-Tryptophan Diet and the Effect on Maternal, Placental, and Fetal
5 Growth. *International Journal of Tryptophan Research : IJTR* **2013**, *6*, 21-33.
6
7

8
9
10 50. Borum, P. R., Carnitine in neonatal nutrition. *Journal of child neurology* **1995**, *10 Suppl*
11 *2*, S25-31.
12
13

14
15 51. Oey, N. A.; den Boer, M. E.; Ruiters, J. P.; Wanders, R. J.; Duran, M.; Waterham, H. R.;
16 Boer, K.; van der Post, J. A.; Wijburg, F. A., High activity of fatty acid oxidation enzymes in
17 human placenta: implications for fetal-maternal disease. *Journal of inherited metabolic disease*
18 **2003**, *26* (4), 385-92.
19
20
21
22

23
24 52. Tyni, T.; Ekholm, E.; Pihko, H., Pregnancy complications are frequent in long-chain 3-
25 hydroxyacyl-coenzyme A dehydrogenase deficiency. *American journal of obstetrics and*
26 *gynecology* **1998**, *178* (3), 603-8.
27
28
29
30

31
32 53. Walsh, B. H.; Broadhurst, D. I.; Mandal, R.; Wishart, D. S.; Boylan, G. B.; Kenny, L. C.;
33 Murray, D. M., The metabolomic profile of umbilical cord blood in neonatal hypoxic ischaemic
34 encephalopathy. *PLoS One* **2012**, *7* (12), e50520.
35
36
37
38

39
40 54. Clemente, D. B.; Casas, M.; Vilahur, N.; Begiristain, H.; Bustamante, M.; Carsin, A. E.;
41 Fernandez, M. F.; Fierens, F.; Gyselaers, W.; Iniguez, C.; Janssen, B. G.; Lefebvre, W.; Llop, S.;
42 Olea, N.; Pedersen, M.; Pieters, N.; Santa Marina, L.; Souto, A.; Tardon, A.; Vanpoucke, C.;
43 Vrijheid, M.; Sunyer, J.; Nawrot, T. S., Prenatal Ambient Air Pollution, Placental Mitochondrial
44 DNA Content, and Birth Weight in the INMA (Spain) and ENVIRONAGE (Belgium) Birth
45 Cohorts. *Environmental health perspectives* **2016**, *124* (5), 659-65.
46
47
48
49
50
51
52
53
54
55
56
57
58
59
60

1
2
3 55. Carlson, S. E.; Colombo, J.; Gajewski, B. J.; Gustafson, K. M.; Mundy, D.; Yeast, J.;
4 Georgieff, M. K.; Markley, L. A.; Kerling, E. H.; Shaddy, D. J., DHA supplementation and
5 pregnancy outcomes. *The American journal of clinical nutrition* **2013**, *97* (4), 808-15.
6
7

8
9
10 56. Harris, M. A.; Reece, M. S.; McGregor, J. A.; Wilson, J. W.; Burke, S. M.; Wheeler, M.;
11 Anderson, J. E.; Auld, G. W.; French, J. I.; Allen, K. G., The Effect of Omega-3
12 Docosahexaenoic Acid Supplementation on Gestational Length: Randomized Trial of
13 Supplementation Compared to Nutrition Education for Increasing n-3 Intake from Foods.
14 *BioMed research international* **2015**, *vol. 2015*, *Article ID 123078*, *8 pages*,
15 *doi:10.1155/2015/123078*
16
17
18
19
20
21
22
23

24
25 57. Muhlhausler, B. S.; Gibson, R. A.; Yelland, L. N.; Makrides, M., Heterogeneity in cord
26 blood DHA concentration: towards an explanation. *Prostaglandins, leukotrienes, and essential*
27 *fatty acids* **2014**, *91* (4), 135-40.
28
29
30
31

32
33 58. Fruhwirth, G. O.; Loidl, A.; Hermetter, A., Oxidized phospholipids: from molecular
34 properties to disease. *Biochimica et biophysica acta* **2007**, *1772* (7), 718-36.
35
36
37

38
39 59. Tincani, A.; Cavazzana, I.; Ziglioli, T.; Lojaco, A.; De Angelis, V.; Meroni, P.,
40 Complement activation and pregnancy failure. *Clinical reviews in allergy & immunology* **2010**,
41 *39* (3), 153-9.
42
43
44

45
46 60. Würtz, P.; Wang, Q.; Niironen, M.; Tynkkynen, T.; Tiainen, M.; Drenos, F.; Kangas, A.
47 J.; Soininen, P.; Skilton, M. R.; Heikkilä, K.; Pouta, A.; Kähönen, M.; Lehtimäki, T.; Rose, R. J.;
48 Kajantie, E.; Perola, M.; Kaprio, J.; Eriksson, J. G.; Raitakari, O. T.; Lawlor, D. A.; Davey
49 Smith, G.; Jarvelin, M.-R.; Ala-Korpela, M.; Auro, K., Metabolic signatures of birthweight in
50 18 288 adolescents and adults. *International journal of epidemiology* **2016**, *45*, 1539-1550.
51
52
53
54
55
56
57
58
59
60

1
2
3 61. Asi, N.; Mohammed, K.; Haydour, Q.; Gionfriddo, M. R.; Vargas, O. L.; Prokop, L. J.;
4 Faubion, S. S.; Murad, M. H., Progesterone vs. synthetic progestins and the risk of breast cancer:
5 a systematic review and meta-analysis. *Systematic reviews* **2016**, *5* (1), 121.
6
7

8
9
10 62. Chen, T.; Zheng, X.; Ma, X.; Bao, Y.; Ni, Y.; Hu, C.; Rajani, C.; Huang, F.; Zhao, A.;
11 Jia, W.; Jia, W., Tryptophan Predicts the Risk for Future Type 2 Diabetes. *PLOS ONE* **2016**, *11*
12 (9), e0162192.
13
14
15
16
17
18
19
20
21
22
23
24
25
26
27
28
29
30
31
32
33
34
35
36
37
38
39
40
41
42
43
44
45
46
47
48
49
50
51
52
53
54
55
56
57
58
59
60

For TOC only

