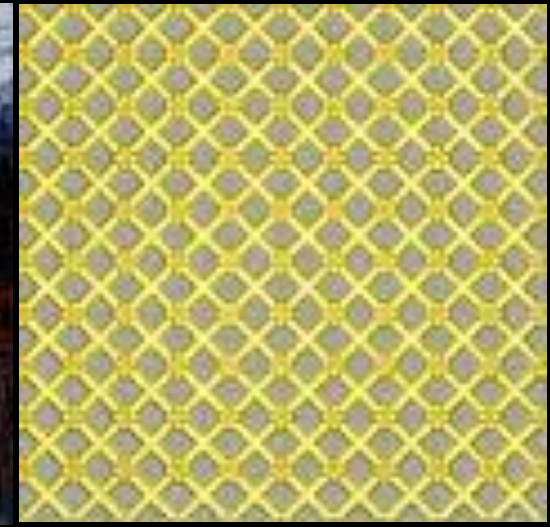


Movements + Memories: Capturing Tacit Knowledge through Drawing

Megan Strickfaden + Jasmien Herssens

“we need to create
a sensorial
gymnasium”

David Howes, 2009

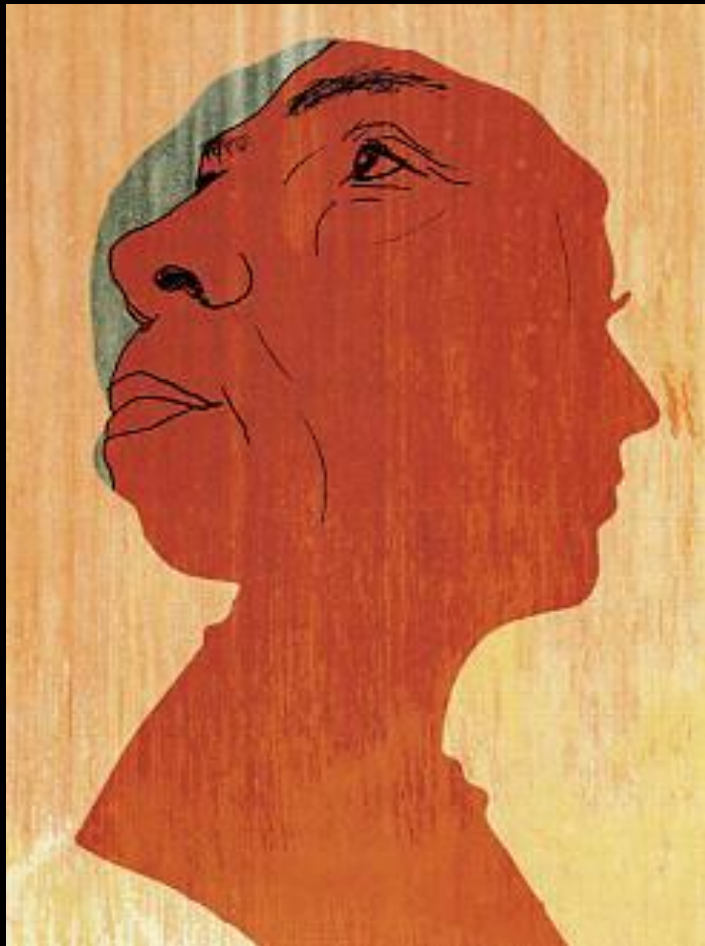




“movement
and
engagement
are encoded
memory that
enable
performance”

David Turnbull, 2002

Remembering, forgetting & taken-for-granted



“Photography,
phonography,
the cinema,
radio, television,
video and the
Internet have
together created
a new collective
memory.”

Paul Connerton, 2006



Canadian Sports Hall of Fame, Calgary AB Canada

④

⑤ locker room

tiled rubber floor (red) - awesome!
glassed cabinets
small inside pot lights - recessed into display area

⑥ olympic & Paralympic

I have no photos or analysis from actual arena

glass wall (years ago)
circles on ceiling like in "splash" but lighting better
(moving light) really awesome detail.

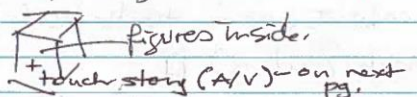
stairs -> tiles + steps
stair 1 (R) no landing
stair 2 (L) landing in tile

⑦ media room

rubber floor
track lighting - some track lights had flaps (older) others plain with coloured film.
glass "stations" with computers x 4
master station - like a "cashier"

⑧ Hockey

glazed floor (+ looney) to look like ice
brighter lighting - tracks + drop light + one big
8 freestanding cases with halogen pot lights
this transition was not great - consistency of lighting can be improved



curved room with drop ceiling 8-9' (black glass w lights showing thru).
14' diameter
this is a lovely space!!
inside cabinets lit top + bottom with antiair in
+ tv. screen



⑤

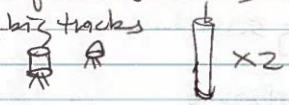
⑨ contact

same
red wall on inside (facing centre)
curving floor
2 chairs + table - coffee table-type chairs with backs
track lights
leamy floor (foam) + leather (3)
"shadow boxing"
natural light (all windows are noted in soundscape notes to follow)

what is this floor made of?

⑩ glide

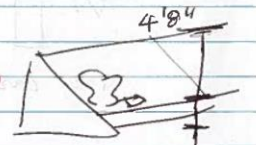
same
glass inside w. railing
carpet with - whoops. ?? I think this.
5 displays in floor (LED lighting)
small tracks, big tracks
whoa! A lot of different lights.



⑪ blade

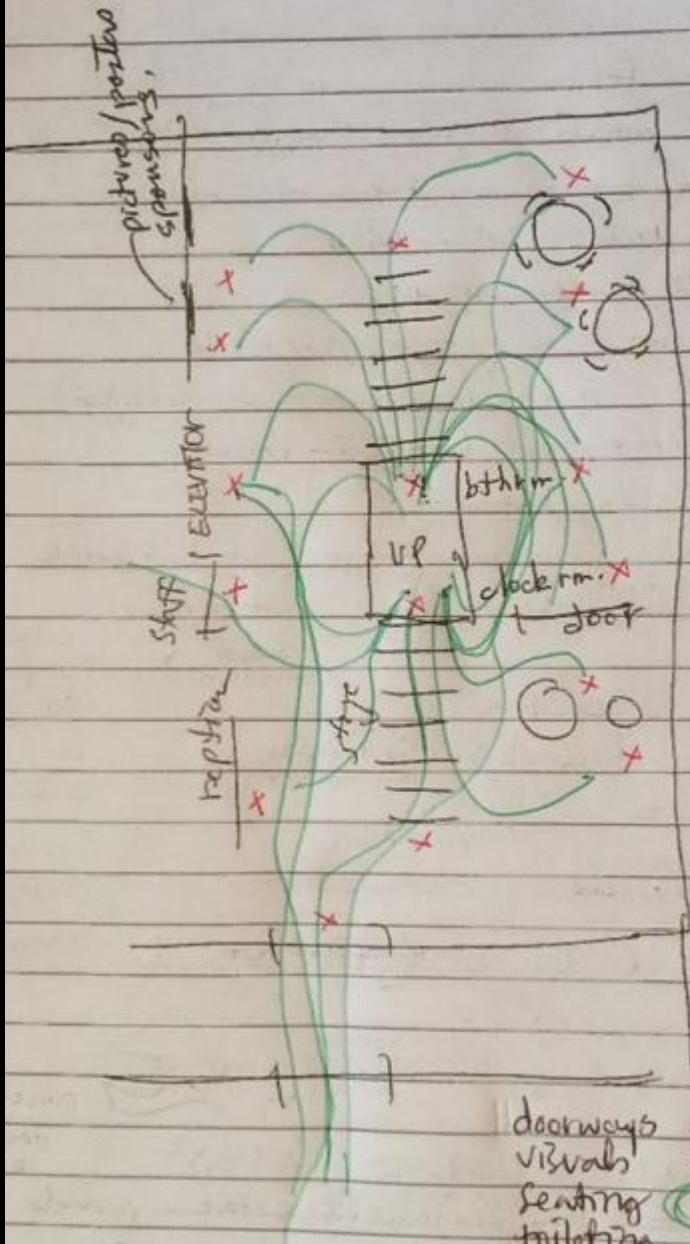
same
coloured films on tracks
painting on wall where is this coming from?
natural light
same.

what colours are these?



too high? orientation not great for someone in wheel chair

④



10 options (routes)
 3 real destinations
 2 actual public places
 3 ways to get there
 4 ways to the exhibit
 - bthrm
 - exhibit
 - elevator
 - 2 stairs
 * PUBLIC
 * PRIVATE

very labyrinth-like
 not always clear
 where to go &
 where allowed
 to go.

a very over-designed
 lower level.
 what is it for?
 (Q)

- doorways
- visvals
- seating
- toileting
- stairway
- clock
- entrances
- options
- elevator



De Hogeweyk Village, Weesp the Netherlands



wheelchairs

often used to "transport people"

- 2 residents to bar pushing themselves (even though wheelchairs ^(being pushed) is very old/antiquated)



Zero @ clarity

no main & easy relative to 'memory' meaningful space, easy to understand.

- it seems like some residents walk well at home but need a walker outdoors
- these ones really move quickly in their walkers with people "chasing" behind (volunteers)

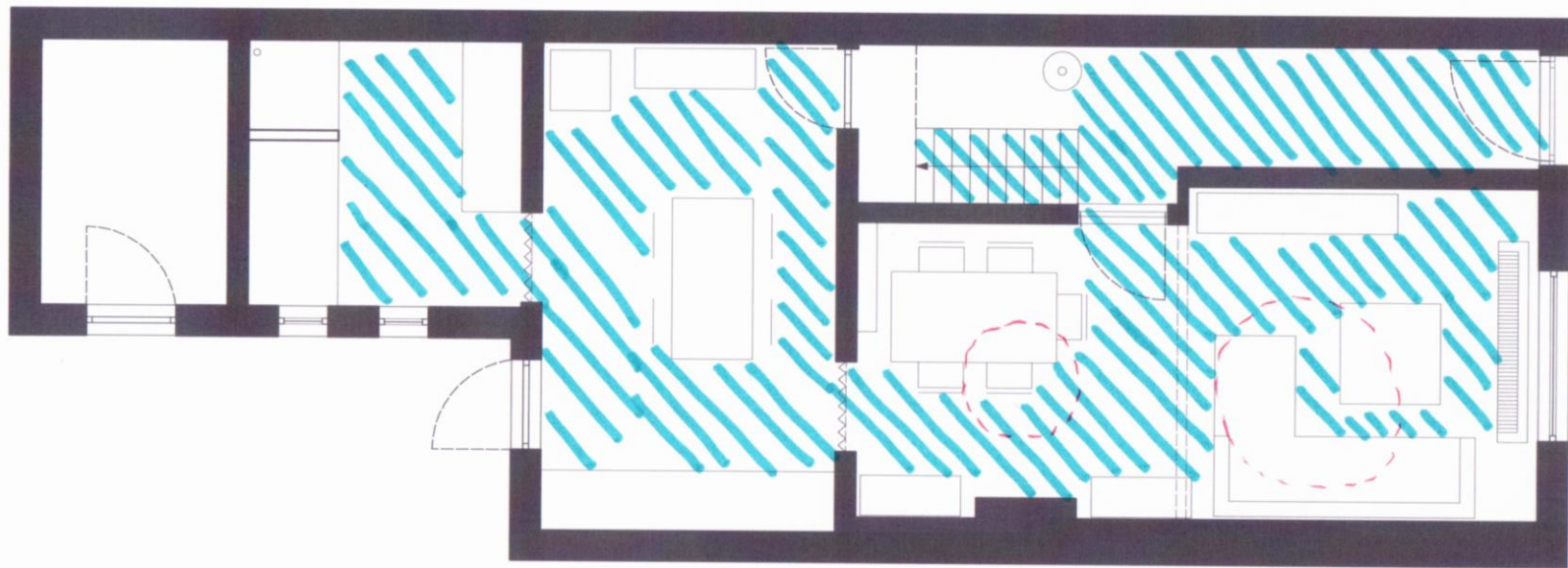
Was there mud rooms in each house?

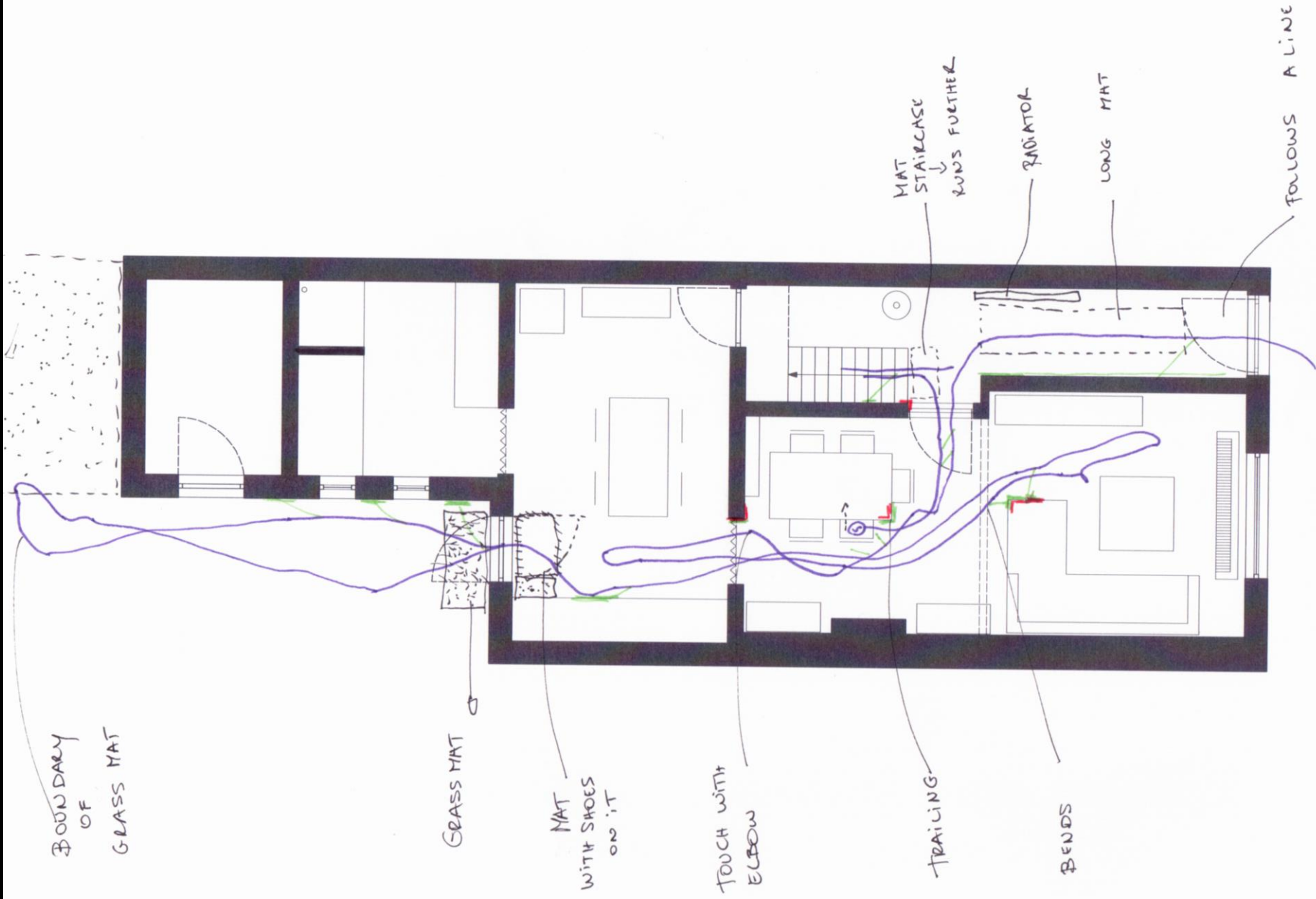
one resident came into restaurant & they told him could go to the cafe if he wanted something b/c they were closed

⊕



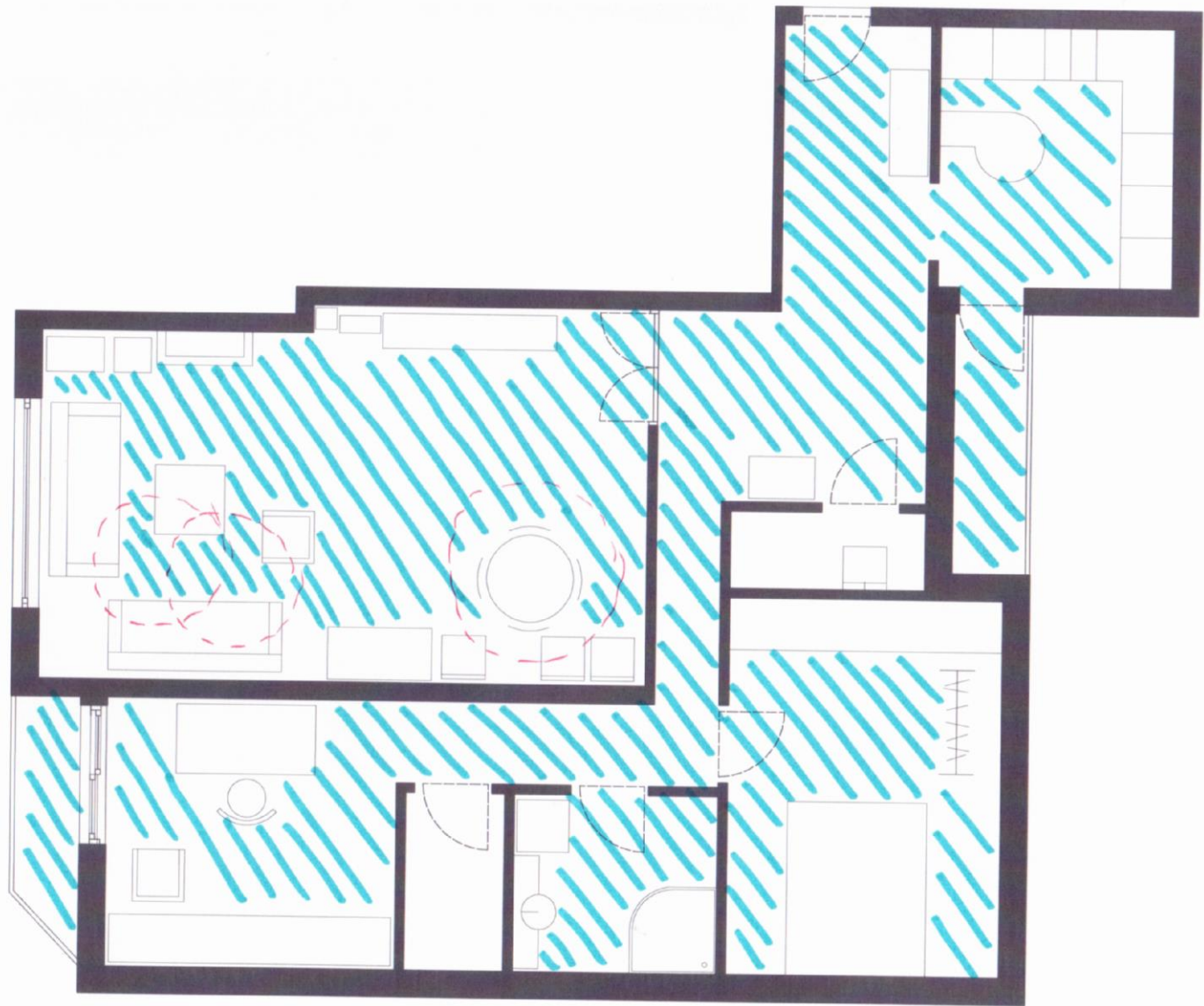
House Grembergen, Belgium, family with father born blind

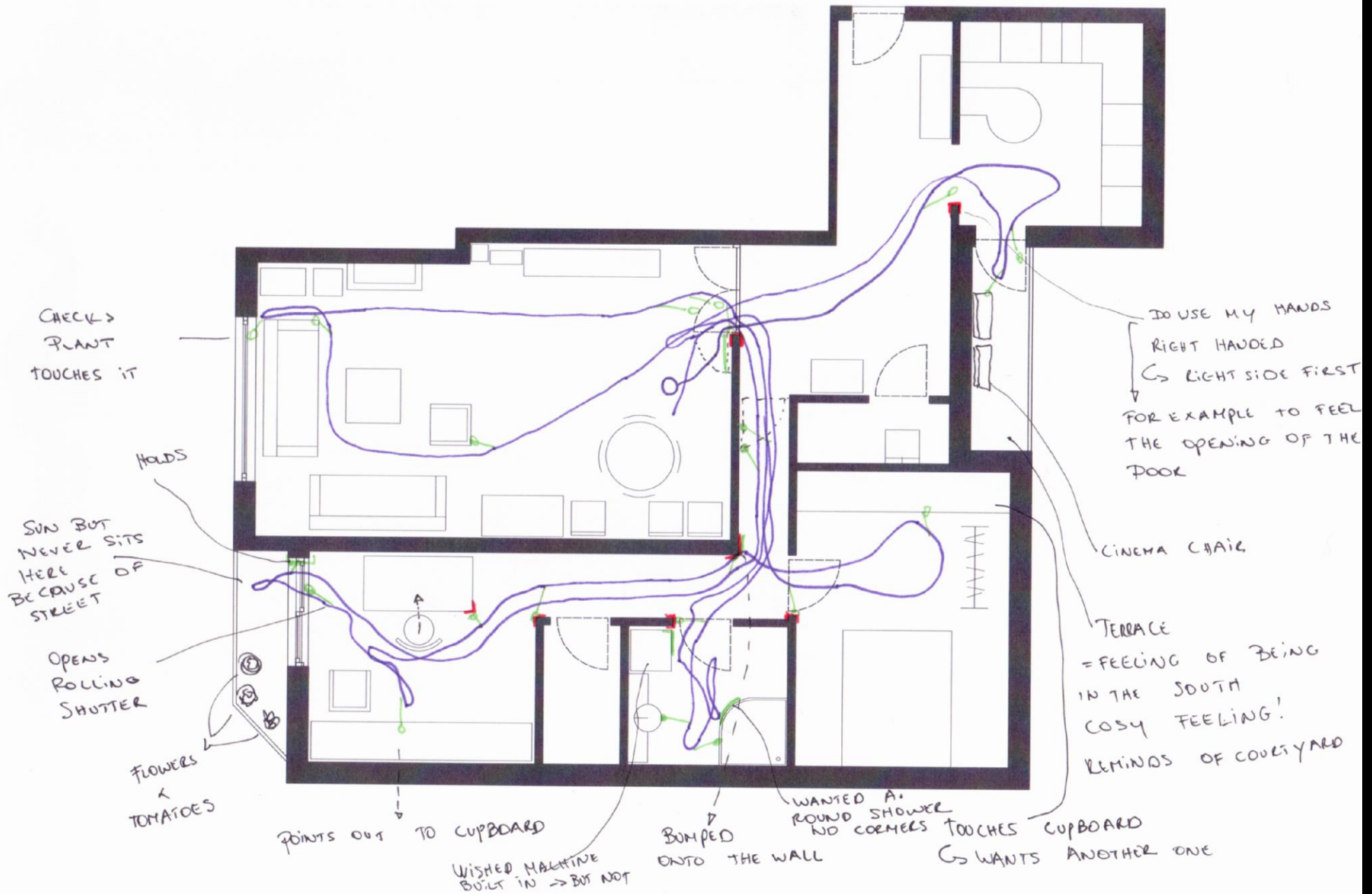


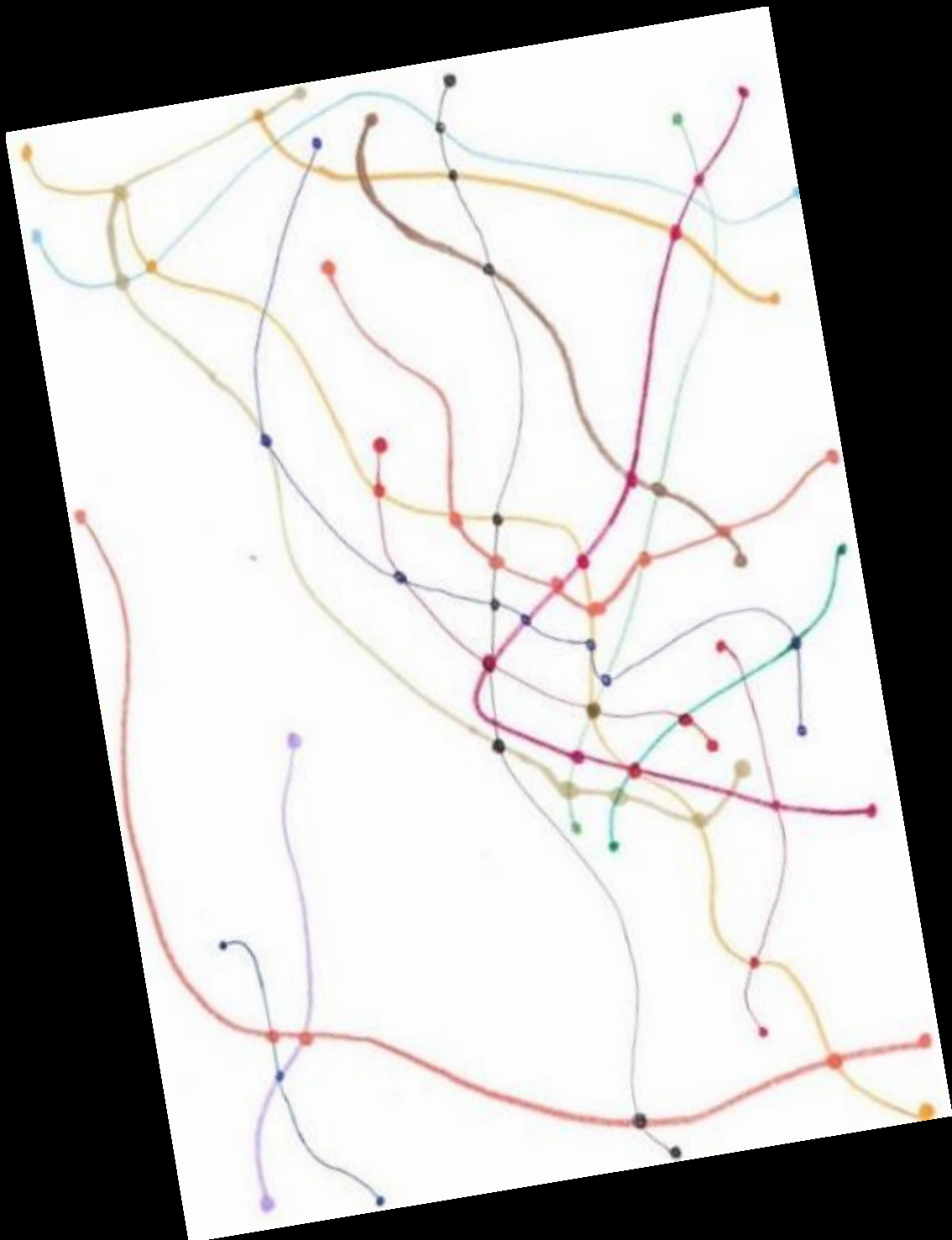




Apartment, Brussels, Belgium woman born blind







EMBODIMENT
reflective & reflexive
dynamic
experiential
involves time
contextualization
complex



megan.strickfaden@ualberta.ca
jasmien.herssens@uhasselt.be