

Is knee neuromuscular activity related to anterior cruciate ligament injury risk? A pilot study

Peer-reviewed author version

Smeets, Annemie; Malfait, Bart; DINGENEN, Bart; Robinson, Mark; Vanrenterghem, Jos; Peers, Koen; Nijs, Stefaan; Vereecken, Styn; Staes, Filip & Verschueren, Sabine (2018) Is knee neuromuscular activity related to anterior cruciate ligament injury risk? A pilot study. In: *Knee*, 26(1), p. 40-54.

DOI: 10.1016/j.knee.2018.10.006

Handle: <http://hdl.handle.net/1942/27605>

1 **Is knee neuromuscular activity related to anterior cruciate ligament injury risk? A pilot**  
2 **study**

3 *Smeets Annemie<sup>a</sup>, Malfait, Bart<sup>a</sup>, Dingenen, Bart<sup>a,b</sup>, Robinson, Mark A<sup>c</sup>, Vanrenterghem, Jos*  
4 *<sup>a</sup>, Peers, Koen<sup>d</sup>, Nijs Stefaan<sup>e</sup>, Vereecken, Styn<sup>e</sup>, Staes, Filip<sup>a</sup>, Verschueren, Sabine<sup>a</sup>*

5

6 <sup>a</sup> Musculoskeletal Rehabilitation Research Group, Department of Rehabilitation Sciences and  
7 Physiotherapy, Faculty of Kinesiology and Rehabilitation Sciences, KU Leuven, Belgium.

8 <sup>b</sup> Rehabilitation Research Centre, Biomedical Research Institute, Faculty of Medicine and Life  
9 Sciences, UHasselt, Diepenbeek, Belgium.

10 <sup>c</sup> Research Institute for Sport and Exercise Sciences, Faculty of Science, Liverpool John Moores  
11 University, Liverpool, UK.

12 <sup>d</sup> Physical Medicine and Rehabilitation, University Hospitals Leuven, Campus Pellenberg,  
13 Belgium.

14 <sup>e</sup> Division of Traumatology, Department of Development and Regeneration, University  
15 Hospitals Leuven, Belgium.

16

17 Corresponding author:

18 Sabine Verschueren, PT, PhD

19 KU Leuven, Musculoskeletal Rehabilitation Research Group,

20 Department of Rehabilitation Sciences, Faculty of Kinesiology and Rehabilitation Sciences,

21 Tervuursevest 101 bus 1501

22 3001 Leuven, Belgium

23 [sabine.verschueren@kuleuven.be](mailto:sabine.verschueren@kuleuven.be)

24 **ABSTRACT**

25 *Background:* Limited evidence exists on neuromuscular risk factors for anterior cruciate  
26 ligament injuries, with most work mainly focussing on the strength of hamstrings and  
27 quadriceps muscles. In this prospective pilot study, we explored if neuromuscular activation  
28 patterns of the quadriceps and hamstrings during a drop vertical jump influence anterior cruciate  
29 ligament injury risk.

30 *Methods:* Forty-six female athletes performed a drop vertical jump at baseline. Injuries were  
31 monitored throughout a one year follow-up. Neuromuscular activation patterns of the vastus  
32 medialis, vastus lateralis, hamstrings medialis and hamstrings lateralis, and selected landing  
33 kinematic and kinetic profiles (knee flexion, knee abduction and hip flexion angles, and knee  
34 abduction moments), were compared between athletes who sustained a non-contact anterior  
35 cruciate ligament injury and those who remained injury-free. EMG vector fields were created  
36 to represent neuromuscular activation patterns of muscle pairs around the knee joint rather than  
37 only considering individual muscle activations, and compared using Statistical Parametric  
38 Mapping.

39 *Results:* Four athletes sustained an anterior cruciate ligament injury. Significantly greater  
40 {hamstrings medialis, hamstrings lateralis}, {vastus lateralis, hamstrings lateralis} and  
41 {hamstrings lateralis, vastus medialis} activations, mainly due to greater hamstrings lateralis  
42 activation, were found in the injured group around peak loading and just before take off ( $P <$   
43  $0.001$ ). No group differences were found in knee flexion, knee abduction and hip flexion angles,  
44 or knee abduction moments.

45 *Conclusions:* This pilot study revealed initial evidence that athletes already showed altered  
46 neuromuscular activation patterns prior to sustaining an anterior cruciate ligament injury,  
47 namely increased lateral and posterior muscle activations.

48 **Key words:** ACL injury, neuromuscular activation, risk factor, drop vertical jump, injury  
49 prevention, electromyography

50

## 51 **1. INTRODUCTION**

52 Anterior cruciate ligament (ACL) injuries are common during dynamic sports activities in the  
53 young, active population and often have important short and long-term physical, psychological  
54 and professional consequences [1], resulting in a lengthy absence from sports and high  
55 economic cost for society [2]. Therefore, establishing neuromuscular and biomechanical risk  
56 factors for ACL injury can assist the development of effective prevention programmes [3] as  
57 both neuromuscular and biomechanical risk factors are potentially modifiable through  
58 interventions [4,5]. To establish the risk factors for a specific injury, prospective studies with  
59 injury as primary outcome are needed. So far, many studies assessed neuromuscular and/or  
60 biomechanical changes after ACL injury or after intervention programs but very few  
61 prospective studies assessed ACL injury risk with ACL injury as primary outcome [6,7]. To  
62 date, only 4 prospective studies assessed neuromuscular risk factors for ACL injuries [8–11],  
63 and only 4 prospective studies assessed biomechanical risk factors [12–15], delivering  
64 contradictory outcomes.

65 Of the four prospective studies investigating the relationship between neuromuscular factors  
66 and ACL injury risk, three studies focussed on muscle strength (isokinetic strength of the  
67 quadriceps and hamstrings, and reciprocal muscle strength ratios) [8,9,11]. Myer et al. [11]  
68 found that 22 female athletes who went on to sustain an ACL injury demonstrated decreased  
69 hamstrings strength and unchanged quadriceps strength during concentric isokinetic testing  
70 (300°/s) compared to 88 female controls. Similarly, Söderman et al. [9] found that 5 ACL  
71 injured female athletes out of 146 players showed a reduced hamstrings to quadriceps ratio

72 (H/Q ratio) during concentric isokinetic strength tests (90°/s) prior to injury. However, on the  
73 contrary, in the study of Uhorchak [8] no differences were found in H/Q ratios during isokinetic  
74 strength tests at 60°/s (concentric action of quadriceps, eccentric action of hamstrings) between  
75 24 ACL injured adolescents and 895 non-injured adolescents (males and females). Only one of  
76 the four studies focused on neuromuscular activation patterns [10]. Zebis et al. [10] investigated  
77 neuromuscular activation patterns during cutting maneuvers in 55 elite female athletes  
78 (handball and soccer). The 5 athletes that sustained an ACL injury during the follow-up period  
79 (2 match seasons) showed reduced activity of the semitendinosus and increased activity of the  
80 vastus lateralis during the preparatory phase (10ms before initial contact) [10].

81 Based on the limited evidence, we hypothesize that imbalances in neuromuscular activation do  
82 play a role in ACL injury risk. Furthermore, as neuromuscular activation patterns can be  
83 modified by prevention programs [16], more prospective studies on neuromuscular risk factors  
84 for ACL injury are needed in order to optimize prevention programmes. [17]. However,  
85 neuromuscular risk factors first need to be identified, and if possible independent confirmed by  
86 further prospective studies. This is very time consuming and often expensive as one has to  
87 screen a large number of participants and subsequently follow these over an extensive period  
88 of time to ensure that an adequate number of injurious events take place. The search for  
89 neuromuscular factors could therefore benefit from pilot work in which a comprehensive  
90 exploratory analysis precedes hypothesis testing [18,19]. Therefore, the aim of this pilot study  
91 was to help justify future large cohort studies by exploring whether female athletes who went  
92 on to sustain a non-contact ACL injury already showed meaningful differences in their knee  
93 neuromuscular activation patterns during the landing phase of a bilateral drop vertical jump  
94 (DVJ) prior to injury when compared to uninjured controls.

95

## 96 **2. METHODS**

### 97 **2.1. Participants**

98 Forty-six female athletes (21 soccer, 9 handball and 16 volleyball) aged between 16 – 28 years  
99 participated in this study. All athletes, who were members of a an elite level team (first national  
100 division), were tested at the beginning of their respective playing season and injuries were  
101 monitored for one year. Participants who had a previous ACL or posterior cruciate ligament  
102 injury, a previous lower extremity injury within the three months prior to testing, or another  
103 lower extremity injury within the one-year follow-up period, had been excluded. All  
104 participants provided informed consent, and the study was approved by the local ethics  
105 committee.

### 106 **2.2. Injury registration**

107 The medical staff of each involved team registered all lower extremity time loss injuries during  
108 follow-up. A time loss injury was defined as having occurred during sports participation and  
109 resulting in being unable to take a full part in future training or match play [20]. We adapted  
110 this definition to include “unable to take a full part in future training or match play for at least  
111 two consecutive weeks”.

### 112 **2.3. Test protocol**

113 Each test session started with a standardized warm-up (two series of eight bilateral squats and  
114 eight bilateral jumps) [21–23]. Body mass and height were measured before the test session  
115 using scales (SECA, Hamburg, Germany) and a portable stadiometer (SECA, Hamburg,  
116 Germany). Standardized indoor footwear (Indoor Copa, Kelme, Elche, Spain) was worn and  
117 where necessary, long hair was tied up to avoid marker occlusion.

118 Subsequently, all athletes were asked to perform bilateral DVJ's. Bilateral DVJ's are commonly  
119 used for screening in clinical settings to assess injury risk [13,14]. The protocol is briefly

120 summarized below. Participants were instructed to drop off a 0.3 m high box with their feet  
121 initially positioned 0.2 m apart on the box, and upon landing to immediately perform a  
122 maximum vertical jump. Participants were also instructed to reach upwards with both hands as  
123 high as possible, as if performing a block in volleyball [24]. Participants were allowed to  
124 familiarize themselves with the tasks by performing three practice repetitions before the start  
125 of the tests. Subsequently, a minimum of three valid trials were completed. A trial was excluded  
126 if subjects jumped off the box instead of dropping, if both feet did not land on the force plates,  
127 if subjects reached upwards with only one hand, or if subjects clearly lost balance upon landing  
128 [14]. A short rest period between consecutive trials was permitted to avoid fatigue [21].

#### 129 **2.4. Data collection**

130 A wireless EMG system (Zerowire, Aurion, Milan, Italy) was used to record muscle activity at  
131 1000Hz of the vastus lateralis (VL), vastus medialis (VM), biceps femoris (referred to as  
132 hamstring lateralis, HL) and semitendinosus (referred to as hamstring medialis, HM) using  
133 surface electrodes positioned according to the SENIAM guidelines [25]. All electrode locations  
134 were shaved and gently cleaned with 70% isopropyl alcohol to reduce skin impedance. Silver-  
135 silver chloride, pre-gelled bipolar surface EMG electrodes (Ambu Blue Sensor, Ballerup,  
136 Denmark) were placed over the muscle belly and aligned with the expected muscle fibre  
137 orientations, with 2 cm inter-electrode distance. Fauth et al. [26] observed that surface  
138 electromyography (EMG) was reliable for measuring mean muscle activation of HL, HM, VL  
139 and VM during the performance of a DVJ (ICC 0.83-0.97). As we were interested in the muscle  
140 activation during the entire landing phase (from initial contact until take off), rather than the  
141 mean muscle activation, we additionally assessed the reliability of the EMG data in 4 uninjured  
142 subjects. These analyses showed both high intra- and inter-session reliability (see Appendix).

143 Secondary to the neuromuscular activation patterns, we also measured knee and hip flexion  
144 angles, knee abduction angles and knee abduction moments as these have previously been



145 identified as potential biomechanical risk factors [12–14]. Therefore, we recorded three-  
146 dimensional kinematic data using six MX-T20 optoelectronic cameras (VICON, Oxford, UK)  
147 sampling at 100 Hz, synchronized with data recorded from two 0.8 x 0.3 m<sup>2</sup> force plates (AMTI,  
148 Watertown, USA) sampling at 1000 Hz.. Each participant had 44 spherical reflective markers  
149 positioned according to the eight segment ‘Liverpool John Moores University’ model including  
150 feet, upper and lower legs, pelvis and trunk. This model was previously described in detail and  
151 shown to be reliable for measuring kinematics and kinetics during DVJ [21].

## 152 **2.5. Data analysis**

153 All modelling and data processing were undertaken in Visual 3D (v.4.83, C-Motion, Kingston,  
154 ON, Canada). Only the first landing (first contact) within each DVJ trial was used for analysis  
155 [21]. Raw EMG signals were high pass filtered using a digital filter at a cut-off frequency of  
156 10 Hz, full wave rectified, and low-pass filtered with a 4<sup>th</sup> order zero-lag Butterworth filter at a  
157 cut-off frequency of 6 Hz. The EMG signal amplitudes were subsequently normalized to the  
158 maximum root mean square amplitude (over a period of 100 ms) of 3 isometric maximum  
159 voluntary contractions. Marker trajectories and forces were filtered using a 4<sup>th</sup> order low pass  
160 Butterworth filter with a cut-off frequency of 18 Hz [27]. Initial contact and take off events  
161 were created when the vertical force crossed a 20 N threshold. Knee and hip flexion angles,  
162 knee abduction angles and moments were calculated using inverse dynamics. External joint  
163 moments are described in this study; i.e. an external knee abduction moment will abduct the  
164 knee (move the distal end of the tibia away from the midline of the participant’s body).

165 Kinetic, kinematic and EMG data were time normalized to 101 data points starting at 100 ms  
166 before initial contact until take off (Fig. 1). The short time period prior to initial contact was  
167 included based on Zebis et al. [10] who showed that neuromuscular pre-activity might be a risk  
168 factor for ACL injury albeit during cutting. Therefore 0% of normalised time corresponds to  
169 100 ms prior to initial contact and 100% corresponds to take off, whereas initial contact is

170 situated around 17% and peak loading around 50%. For all included variables, the average of  
171 three trials was calculated for each participant and then means were calculated across the  
172 groups.

## 173 **2.6. Statistical analyses**

174 Participants' baseline characteristics were compared between the control and the ACL-injured  
175 group using independent sample Student's *t*-tests (Table 1).

176 To compare neuromuscular activation patterns of muscle pairs around the knee joint rather than  
177 only considering individual muscle activation patterns as independent observations, time-  
178 varying EMG vector fields were created. A major advantage of this technique is that it accounts  
179 for inter-muscle covariance. The following vector fields were created to represent the vector  
180 magnitude of anatomically relevant muscle groupings: an overall EMG {VM,VL,HM,HL}  
181 (time) vector field, an anterior {VM,VL} (time) vector field, a lateral {VL,HL} (time) vector  
182 field, a posterior {HM,HL} (time) vector field, a medial {HM,VM} (time) vector field and 2  
183 diagonal vector fields: a {HM, VL} (time) vector field, and a {HL, VM} (time) vector field  
184 [28]. To statistically compare these vector fields between groups, seven Hotelling's  $T^2$  tests  
185 were conducted (the vector field equivalent of an independent samples Student's *t*-test) using  
186 Statistical Parametric Mapping (SPM) [28,29] for which Alpha was set at 0.05. SPM has  
187 become well established in biomechanical research. Basically, first a test statistic is calculated  
188 for each time node (e.g., *t*-values). Second, the thresholding problem of repeated comparisons  
189 over time is handled by modeling the behavior of random time-varying signals as a random  
190 field based on signal smoothness [18,30]. Given the differences in group sizes, equality of  
191 variance between groups was not assumed. Post-hoc SPM independent *t*-tests were used to  
192 estimate the contribution of individual muscles to vector field based group differences. Detailed  
193 examples, theoretical background and interpretations of vector field and SPM statistics are  
194 available elsewhere [28,29]. In summary, if at certain times of the landing the  $T^2$  or *t*-statistic

195 exceeded the critical threshold then a significant difference between groups was assumed of  
196 which the probability ( $P$ -value) depends on the magnitude and duration of the threshold  
197 crossing.

198 Finally, external knee abduction moments, knee abduction angles, knee flexion and hip flexion  
199 angles were compared between the ACL-injured and the control group across the landing phase  
200 (excluding the 100ms pre-landing phase), again using SPM independent sample t-tests.

201

### 202 **3. RESULTS**

203 During the one year follow-up, four participants sustained a non-contact ACL injury. All  
204 injuries occurred during competitive match play (1 in soccer, 2 in handball, 1 in volleyball).  
205 These ACL injuries were diagnosed with magnetic resonance imaging (MRI) and all underwent  
206 ACL reconstruction. Three out of four ACL injuries affected the non-dominant leg. The  
207 dominant leg was defined as the preferred leg to kick a ball [31].

208 Of the remaining non-ACL-injured participants, five participants sustained an ankle inversion  
209 trauma, and two other participants sustained an overuse knee injury during the one year follow-  
210 up period (one pes anserinus tendinopathy and one degenerative lateral meniscus lesion with  
211 associated cyst). As the purpose of this study was to assess ACL injury risk, the latter seven  
212 participants who got injured during the follow-up were excluded, resulting in a control group  
213 of 35 participants in total (Fig. 2). No significant differences were found for age, weight, height  
214 and body mass index between the ACL-injured and the control group (Table 1).

#### 215 **3.1. Within group analysis**

216 Both in the control group and the ACL-injured group, no significant differences were found  
217 between limbs for the amplitude of the overall EMG {VM,VL,HM,HL} (time) vector, for knee  
218 abduction moments, knee abduction angles, or for knee or hip flexion angles ( $P > 0.05$ ). As our  
219 study was not concerned with leg preference and since there were no significant leg differences  
220 we pooled our data across legs resulting in a control sample consisting of 70 legs and an ACL-  
221 injured sample consisting of 8 legs.

#### 222 **3.2. Between group analysis**

223 To investigate whether there was any difference in neuromuscular activation between the ACL-  
224 injured athletes and the non-injured athletes, the overall multi-muscle EMG vector  
225 {VM,VL,HM,HL} was compared between both groups. A significant difference in the overall

226 multi-muscle EMG vector {VM,VL,HM,HL} was found between the ACL-injured group and  
227 the control group from peak loading until the last part of the acceleration phase just before take  
228 off (34-100% time;  $P < 0.001$ ).

229 Subsequently, 6 Hotelling's  $T^2$  tests were performed to identify which muscle pairs were  
230 significantly different between both groups and were thus responsible for the significant  
231 differences in the overall multi-muscle EMG vector. These Hotelling's  $T^2$  tests showed  
232 significantly greater amplitudes of the {HL, HM} (t) vector, the {HL, VL} (t) vector and the  
233 {HL,VM} (t) vector in the ACL-injured group compared to the control group during the peak  
234 loading phase (43-80% time,  $P < 0.001$ ; 55-71% time,  $P < 0.001$  and 58-79% time,  $P < 0.001$   
235 respectively) and during the last part of the acceleration phase just before take off (93-100%  
236 time;  $P < 0.001$ , 84-100% time;  $P < 0.001$  and 90-100% time;  $P = 0.002$  respectively) (Fig. 3  
237 and 4). Furthermore significantly greater amplitudes in {HM, VL} (t) vector were found in the  
238 ACL-injured group the last part of acceleration phase just before take off (91-100% time,  $P <$   
239 0.035).

240 Finally, post-hoc SPM independent t-tests showed significantly greater HL amplitudes in the  
241 ACL-injured group compared to the control group during the peak loading phase (51-78%;  $P$   
242  $< 0.001$ ) and during the last part of the acceleration phase just before take off (92-100% time;  
243  $P = 0.006$ ) (Figure 3). No differences were found between groups for the individual muscle  
244 activation amplitudes of VM, VL and HM (Fig. 3 and 5).

245 Furthermore, no significant differences in external knee abduction moments, knee abduction  
246 angles, knee flexion, and hip flexion angles were found between the ACL injured group and the  
247 control group (Fig. 6). However, a clear tendency was observed for the ACL-injured group to  
248 show larger knee abduction angles and smaller knee flexion angles, seen by the SPM{t}-curve  
249 being consistently respectively below and above 0.

#### 250 4. DISCUSSION

251 The purpose of this pilot study was to prospectively explore the presence of neuromuscular  
252 differences in athletes who would go on to suffer an ACL injury compared to uninjured controls.  
253 Distinct muscle activation patterns were found in the ACL injured group compared to controls,  
254 primarily showing greater activation levels during peak loading and just before take-off, mostly  
255 due to increased lateral hamstring activations.

256 It is commonly accepted that quadriceps and hamstrings co-contractions are necessary to ensure  
257 dynamic knee joint stability during dynamic activities [32]. Balanced hamstrings to quadriceps  
258 co-contraction might protect against anterior tibial translation [33,34] and appropriate medial  
259 to lateral co-contraction of the hamstrings and quadriceps should protect the knee joint from  
260 high knee abduction loads [35]. However, when the lateral hamstrings are favored in this co-  
261 contraction, then this may have detrimental consequences leading to increased risk of injury.  
262 For example, Serpell et al. [36] have shown that during a step-up task, selectively increasing  
263 the lateral hamstrings-quadriceps co-activation results in more ACL elongation, while stronger  
264 medial hamstring-quadriceps co-activation reduces ACL elongation and knee joint rotation,  
265 abduction, translation and distraction. Furthermore, the prospective study of Zebis et al. [10]  
266 demonstrated that a neuromuscular imbalance between lateral and medial activation during a  
267 side cutting manoeuvre was associated with increased ACL injury risk. The authors suggested  
268 that sufficient HM activity against VL activity is important to compress the medial knee joint  
269 and thereby limit the risk of excessive abduction of the knee and minimizing the strain on the  
270 ACL [10]. This is in agreement with Palmieri-Smith et al. [37], who showed that increased  
271 activation of the vastus lateralis and hamstrings lateralis during the preparatory phase of a 1 m  
272 forward hop was associated with higher peak knee valgus angles in female athletes.

273 However, comparing our results with other studies should nonetheless be done with some  
274 apprehension, as muscle activations were assessed in a variety of dynamic tasks. For example,  
275 Husted et al. [38] showed that neuromuscular pre-activity of the HM, HL and VL was only low  
276 to moderately correlated between side cutting manoeuvres and the DVJ. Therefore, we recently  
277 investigated the relationship between muscle activation of quadriceps and hamstrings and the  
278 kinematics of the knee and hip joint during the performance of a DVJ in female athletes [22].  
279 We found that those athletes who had a more erect landing pattern (less knee and hip flexion),  
280 showed an increased {VL, HL} activation.

281 Thus, we expected that the altered muscle activation patterns in the ACL-injured group would  
282 go together with significant differences in the selected landing kinematics or kinetics (knee  
283 abduction moment, knee abduction angle, knee flexion angle and hip flexion angle). In this  
284 pilot study we did not find significant differences between groups but a clear tendency was  
285 observed for the ACL-injured group to show larger knee abduction angles and smaller knee  
286 flexion angles. The fact that landing kinematics and kinetics were not significantly different  
287 between the ACL-injured group and the control group suggests that neuromuscular activation  
288 patterns might be more sensitive for predicting injury risk in well-trained female athletes.  
289 Probably, subtle alterations in muscle activation only influence the stability and  
290 arthrokinematics of the knee joint and therefore not necessarily result in significant changes in  
291 joint angles and moments.

292 The risk of ACL injuries is multifactorial and therefore the results of this paper should neither  
293 be interpreted in isolation nor prematurely. The aim of this study was not to find an 'ultimate  
294 predictive factor' for ACL injury risk, or to criticize existing factors, but was to explore whether  
295 neuromuscular activation patterns are worthwhile consideration in the multifactorial approach  
296 to prevent ACL injuries. Recently, Bittencourt et al. [39] published a conceptual paper to  
297 propose a new framework on sports injury prevention, in which injury prediction is based on

298 risk pattern recognition. They proposed a ‘web of determinants’ that visualizes the complex  
299 interactions between the different risk factors. Based on the results of our pilot study we suggest  
300 that also neuromuscular activation patterns may play a meaningful role in this ‘web of  
301 determinants for ACL injury risk’. In the past, muscle activation could only be measured with  
302 laboratory techniques and therefore it was not feasible to implement it in injury prevention  
303 programmes. But recent technological developments (e.g. sport clothes with embedded textile  
304 electrodes) made it possible to also measure muscle activation in field settings

305 To our knowledge, this prospective pilot study is the first study that comprehensively  
306 investigated the relationship between neuromuscular activation patterns and the incidence of  
307 ACL injuries, yet it comes with some limitations. First, we would like to reiterate that the  
308 sample size of this pilot study was small and therefore we should be extremely cautious not to  
309 generalize the observations as facts. Second, other muscles such as the gastrocnemius and glutei  
310 can influence dynamic knee joint stability but these were not measured [40,41]. Third, as we  
311 did not measure tibio-femoral contact forces, ACL strain, or actual joint kinematics for example  
312 through the use of video fluoroscopy, we cannot describe the underlying mechanics that explain  
313 whether a specific neuromuscular activation pattern would result directly in an increased ACL  
314 injury strain. The calculation of medial and lateral tibio-femoral contact forces might reveal for  
315 example an unloading phenomenon of the medial knee compartment compared to high contact  
316 forces at the lateral knee compartment, but this would need to be confirmed.

317

## 318 **5. CONCLUSIONS**

319 This pilot study has prospectively demonstrated altered neuromuscular activation patterns in  
320 ACL injured elite female team sports athletes. Participants who sustained an ACL injury  
321 showed increased lateral hamstring activation during peak loading and the push off phase of a



322 DVJ. Previously suggested kinematic or kinetic indicators of increased risk of injury were not  
323 confirmed, providing a preliminary rationale for including neuromuscular activations in future  
324 large scale prospective studies.

325

## 326 **CONFLICT OF INTEREST**

327 This research did not receive any specific grant from funding agencies in the public,  
328 commercial, or not-for-profit sectors.

329

## 330 **6. REFERENCES**

- 331 [1] Noyes FR, Mooar P a, Matthews DS, Butler DL. The symptomatic anterior cruciate-  
332 deficient knee. Part I: the long-term functional disability in athletically active  
333 individuals. *J Bone Joint Surg Am* 1983;65:154–62. doi:10.1007/978-1-4471-5451-  
334 8\_38.
- 335 [2] Gottlob CA, Baker CL. Anterior cruciate ligament reconstruction: socioeconomic  
336 issues and cost effectiveness. *Am J Orthop* 2000;29:472–6.
- 337 [3] Finch C. A new framework for research leading to sports injury prevention. *J Sci Med*  
338 *Sport* 2006;9:3–9. doi:10.1016/j.jsams.2006.02.009.
- 339 [4] Zebis MK, Bencke J, Andersen LL, Dossing S, Alkjaer T, Magnusson P, et al. The  
340 Effects of Neuromuscular Training on Knee Joint Motor Control During Sidecutting in  
341 Female Elite Soccer and Handball Players. *Clin J Sport Med* 2008;18:329–37.  
342 doi:10.1097/JSM.0b013e31817f3e35.
- 343 [5] Donnell-Fink LA, Klara K, Collins JE, Yang HY, Goczalk MG, Katz JN, et al.  
344 Effectiveness of knee injury and anterior cruciate ligament tear prevention programs: A  
345 meta-analysis. *PLoS One* 2015;10:1–17. doi:10.1371/journal.pone.0144063.
- 346 [6] Rafeuddin R, Sharir R, Staes F, Dingenen B, George K, Robinson MA, et al. Mapping  
347 current research trends on neuromuscular risk factors of non-contact ACL injury. *Phys*  
348 *Ther Sport* 2016;22:101–13. doi:10.1016/j.ptsp.2016.06.004.
- 349 [7] Sharir R, Rafeuddin R, Staes F, Dingenen B, George K, Vanrenterghem J, et al.  
350 Mapping current research trends on anterior cruciate ligament injury risk against the  
351 existing evidence: In vivo biomechanical risk factors. *Clin Biomech* 2016;37:34–43.  
352 doi:10.1016/j.clinbiomech.2016.05.017.
- 353 [8] Uhorchak JM, Scoville CR, Williams GN, Arciero RA, St. Pierre P, Taylor DC. Risk  
354 Factors Associated with Noncontact Injury of the Anterior Cruciate Ligament. A  
355 Prospective Four-Year Evaluation of 859 West Point Cadets. *Am J Sports Med*  
356 2003;31:831–42. doi:0363-5465/103/3131-0831\$02.00/0.

- 357 [9] Söderman K, Alfredson H, Pietilä T, Werner S. Risk factors for leg injuries in female  
358 soccer players: A prospective investigation during one out-door season. *Knee Surgery,*  
359 *Sport Traumatol Arthrosc* 2001;9:313–21. doi:10.1007/s001670100228.
- 360 [10] Zebis MK, Andersen LL, Bencke J, Kjaer M, Aagaard P. Identification of athletes at  
361 future risk of anterior cruciate ligament ruptures by neuromuscular screening. *Am J*  
362 *Sports Med* 2009;37:1967–73. doi:10.1177/0363546509335000.
- 363 [11] Myer GD, Ford KR, Barber Foss K, Liu C, Nick T, Hewett TE. The Relationship of  
364 hamstrings and quadriceps strength to anterior cruciate ligament injury in female  
365 athletes. *Clin J Sport Med* 2009;19:3–8.
- 366 [12] Leppänen M, Pasanen K, Kujala UM, Vasankari T, Kannus P, Äyrämö S, et al. Stiff  
367 Landings Are Associated With Increased ACL Injury Risk in Young Female Basketball  
368 and Floorball Players. *Am J Sports Med* 2016;363546516665810.  
369 doi:10.1177/0363546516665810.
- 370 [13] Krosshaug T, Steffen K, Kristianslund E, Nilstad A, Mok K-M, Myklebust G, et al.  
371 The Vertical Drop Jump Is a Poor Screening Test for ACL Injuries in Female Elite  
372 Soccer and Handball Players: A Prospective Cohort Study of 710 Athletes. *Am J*  
373 *Sports Med* 2016;44:874–83. doi:10.1177/0363546515625048.
- 374 [14] Hewett TE. Biomechanical Measures of Neuromuscular Control and Valgus Loading  
375 of the Knee Predict Anterior Cruciate Ligament Injury Risk in Female Athletes: A  
376 Prospective Study. *Am J Sports Med* 2005;33:492–501.  
377 doi:10.1177/0363546504269591.
- 378 [15] Leppänen M, Pasanen K, Krosshaug T, Kannus P, Vasankari T, Kujala UM, et al.  
379 Sagittal Plane Hip, Knee, and Ankle Biomechanics and the Risk of Anterior Cruciate  
380 Ligament Injury: A Prospective Study. *Orthop J Sport Med* 2017;5:232596711774548.  
381 doi:10.1177/2325967117745487.
- 382 [16] Zebis MK, Andersen LL, Brandt M, Myklebust G, Bencke J, Lauridsen HB, et al.  
383 Effects of evidence-based prevention training on neuromuscular and biomechanical  
384 risk factors for ACL injury in adolescent female athletes: a randomised controlled trial.  
385 *Br J Sports Med* 2015:bjsports-2015-094776. doi:10.1136/bjsports-2015-094776.
- 386 [17] Finni T, Hu M, Kettunen P, Vilavuo T, Cheng S. Measurement of EMG activity with  
387 textile electrodes embedded into clothing. *Physiol Meas* 2007;28:1405–19.  
388 doi:10.1088/0967-3334/28/11/007.
- 389 [18] Pataky TC, Vanrenterghem J, Robinson MA. The probability of false positives in zero-  
390 dimensional analyses of one-dimensional kinematic, force and EMG trajectories. *J*  
391 *Biomech* 2016:1–9. doi:10.1016/j.jbiomech.2016.03.032.
- 392 [19] Pataky TC, Robinson MA, Vanrenterghem J. Region-of-interest analyses of one-  
393 dimensional biomechanical trajectories: bridging 0D and 1D theory, augmenting  
394 statistical power. *PeerJ* 2016;4:e2652. doi:10.7717/peerj.2652.
- 395 [20] Fuller CW, Ekstrand J, Junge a., Andersen TE, Bahr R, Dvorak J, et al. Consensus  
396 statement on injury definitions and data collection procedures in studies of football  
397 (soccer) injuries. *Scand J Med Sci Sport* 2006;16:83–92. doi:10.1111/j.1600-  
398 0838.2006.00528.x.
- 399 [21] Malfait B, Sankey S, Azidin RMFR, Deschamps K, Vanrenterghem J, Robinson MA,  
400 et al. How reliable are lower-limb kinematics and kinetics during a drop vertical jump?  
401 *Med Sci Sports Exerc* 2014;46:678–85. doi:10.1249/MSS.000000000000170.
- 402 [22] Malfait B, Dingenen B, Smeets A, Staes F, Pataky T, Robinson M a., et al. Knee and

- 403 Hip Joint Kinematics Predict Quadriceps and Hamstrings Neuromuscular Activation  
404 Patterns in Drop Jump Landings. *PLoS One* 2016;11:e0153737.  
405 doi:10.1371/journal.pone.0153737.
- 406 [23] Dingenen B, Malfait B, Vanrenterghem J, Robinson MA, Verschueren SMP, Staes FF.  
407 Can two-dimensional measured peak sagittal plane excursions during drop vertical  
408 jumps help identify three-dimensional measured joint moments? *Knee* 2015;22:73–9.  
409 doi:10.1016/j.knee.2014.12.006.
- 410 [24] Ford KR, Myer GD, Smith RL, Byrnes RN, Dopirak SE, Hewett TE. Use of an  
411 overhead goal alters vertical jump performance and biomechanics. *J Strength Cond Res*  
412 2005;19:394–9. doi:10.1519/15834.1.
- 413 [25] Hermens H, Freriks B, Merletti R, Stegeman D, Blok J, Rau G, et al. SENIAM 8:  
414 European recommendations for surface electromyography. 1999.
- 415 [26] Fauth ML, Petushek EJ, Feldmann CR, Hsu BE, Garceau LR, Lutsch BN, et al.  
416 Reliability of surface electromyography during maximal voluntary isometric  
417 contractions, jump landings, and cutting. *J Strength Cond Res* 2010;24:1131–7.
- 418 [27] Bisseling RW, Hof AL. Handling of impact forces in inverse dynamics. *J Biomech*  
419 2006;39:2438–44. doi:10.1016/j.jbiomech.2005.07.021.
- 420 [28] Robinson MA, Vanrenterghem J, Pataky TC. Statistical Parametric Mapping (SPM) for  
421 alpha-based statistical analyses of multi-muscle EMG time-series. *J Electromyogr*  
422 *Kinesiol* 2015;25:14–9. doi:10.1016/j.jelekin.2014.10.018.
- 423 [29] Pataky TC, Robinson M a., Vanrenterghem J. Vector field statistical analysis of  
424 kinematic and force trajectories. *J Biomech* 2013;46:2394–401.  
425 doi:10.1016/j.jbiomech.2013.07.031.
- 426 [30] Friston KJ, Holmes a. P, Worsley KJ, Poline J-P, Frith CD, Frackowiak RSJ.  
427 Statistical parametric maps in functional imaging: A general linear approach. *Hum*  
428 *Brain Mapp* 1995;2:189–210. doi:10.1002/hbm.460020402.
- 429 [31] Ford KR, Myer GD, Hewett TE. Valgus knee motion during landing in high school  
430 female and male basketball players. *Med Sci Sports Exerc* 2003;35:1745–50.  
431 doi:10.1249/01.MSS.0000089346.85744.D9.
- 432 [32] Beynon BD, Fleming BC. Anterior cruciate ligament strain in-vivo: A review of  
433 previous work. *J Biomech* 1998;31:519–25. doi:10.1016/S0021-9290(98)00044-X.
- 434 [33] Hashemi J, Breighner R, Chandrashekar N, Hardy DM, Chaudhari AM, Shultz SJ, et  
435 al. Hip extension, knee flexion paradox: A new mechanism for non-contact ACL  
436 injury. *J Biomech* 2011;44:577–85. doi:10.1016/j.jbiomech.2010.11.013.
- 437 [34] Beynon B, Howe J, Pope M, Johnson R, Fleming B. The measurement of anterior  
438 cruciate ligament strain in vivo. *Int Orthopaedics* 1992;16:1–12.
- 439 [35] Lloyd DG, Buchanan TS, Besier TF. Neuromuscular biomechanical modeling to  
440 understand knee ligament loading. *Med Sci Sports Exerc* 2005;37:1939–47.  
441 doi:10.1249/01.mss.0000176676.49584.ba.
- 442 [36] Serpell BG, Scarvell JM, Pickering MR, Ball NB, Newman P, Perriman D, et al.  
443 Medial and lateral hamstrings and quadriceps co-activation affects knee joint  
444 kinematics and ACL elongation: a pilot study. *BMC Musculoskelet Disord*  
445 2015;16:348. doi:10.1186/s12891-015-0804-y.
- 446 [37] Palmieri-Smith RM, Wojtys EM, Ashton-Miller JA. Association between preparatory  
447 muscle activation and peak valgus knee angle. *J Electromyogr Kinesiol* 2008;18:973–9.

448 doi:10.1016/j.jelekin.2007.03.007.

449 [38] Husted RS, Bencke J, Andersen LL, Myklebust G, Kallemsen T, Lauridsen HB, et al.  
450 A comparison of hamstring muscle activity during different screening tests for non-  
451 contact ACL injury. *Knee* 2016;23:362–6. doi:10.1016/j.knee.2016.02.004.

452 [39] Bittencourt NFN, Meeuwisse WH, Mendonça LD, Nettel-Aguirre A, Ocarino JM,  
453 Fonseca ST. Complex systems approach for sports injuries: moving from risk factor  
454 identification to injury pattern recognition—narrative review and new concept. *Br J*  
455 *Sports Med* 2016;50:1309–14. doi:10.1136/bjsports-2015-095850.

456 [40] Marouane H, Shirazi-Adl A, Adouni M. Knee joint passive stiffness and moment in  
457 sagittal and frontal planes markedly increase with compression. *Comput Methods*  
458 *Biomech Biomed Engin* 2013:37–41. doi:10.1080/10255842.2013.795555.

459 [41] Morgan KD, Donnelly CJ, Reinbolt JA. Elevated gastrocnemius forces compensate for  
460 decreased hamstrings forces during the weight-acceptance phase of single-leg jump  
461 landing: Implications for anterior cruciate ligament injury risk. *J Biomech*  
462 2014;47:3295–302. doi:10.1016/j.jbiomech.2014.08.016.

463

464

465

466

467

468

469

470

471

472

473

474

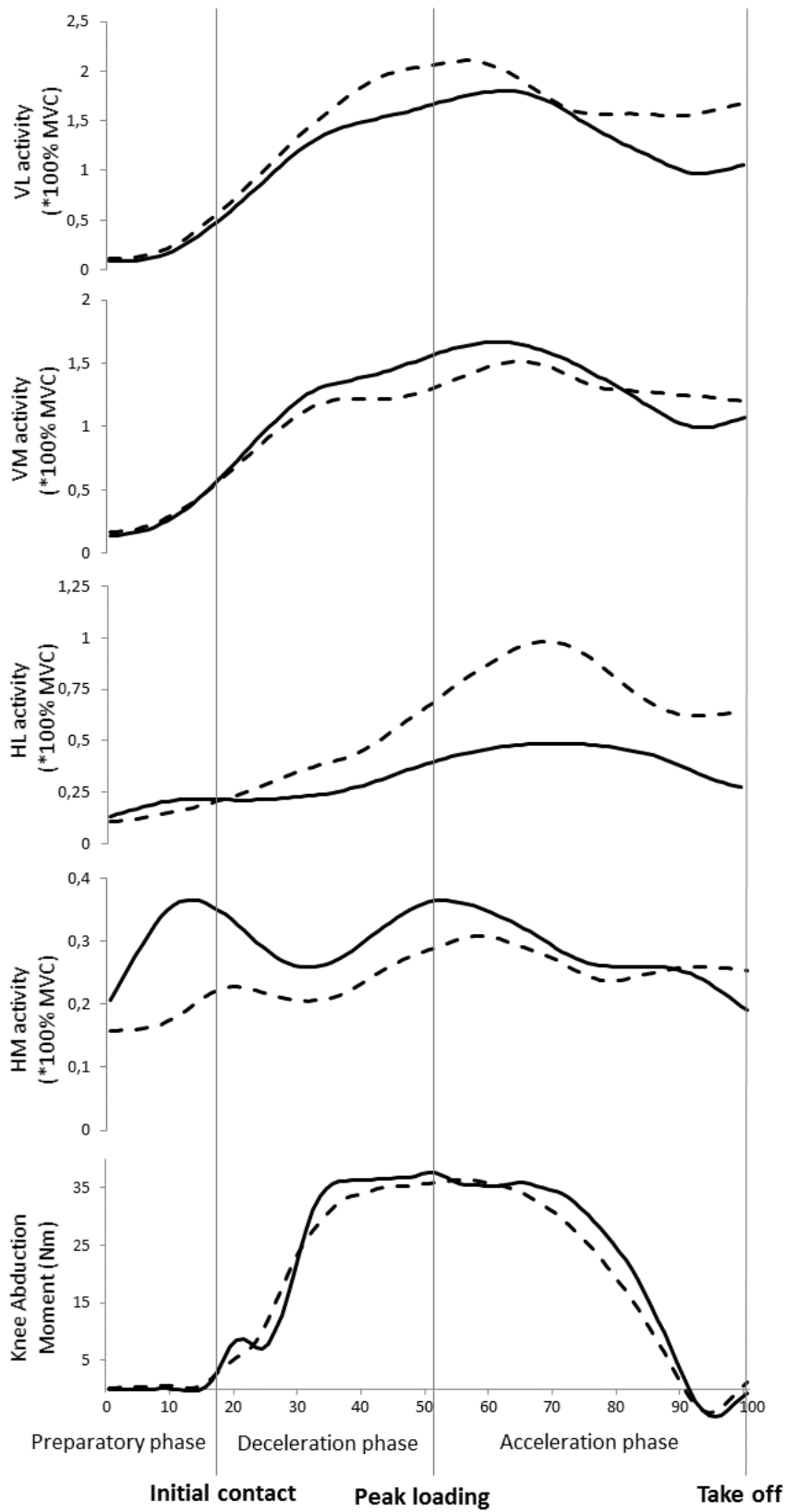
475

476

477

478

479

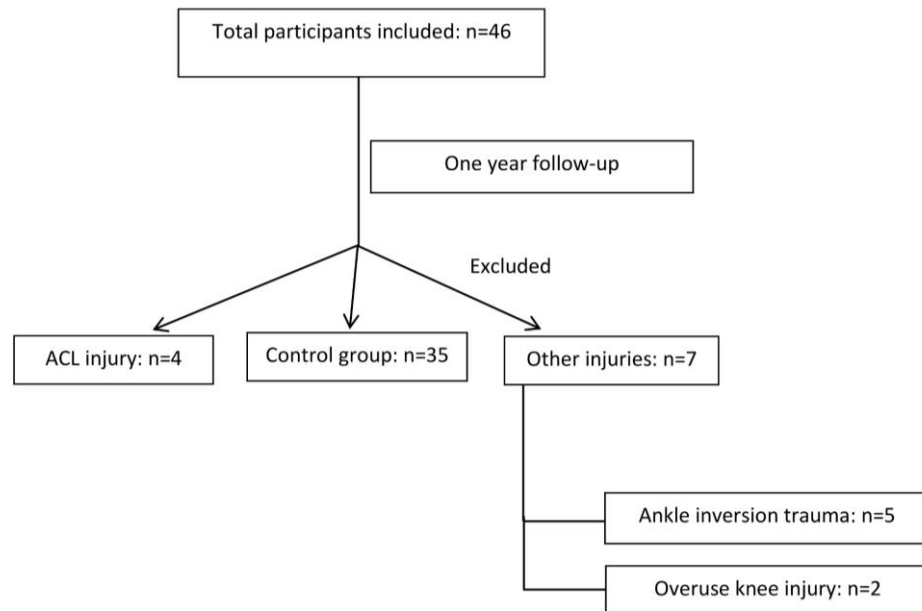


482 **Fig. 1**

483 Mean data of the ACL-injured group (dotted line) versus the control group (bold line) to  
484 illustrate the different time periods during DVJ from 100ms before initial contact until take off.

485

486

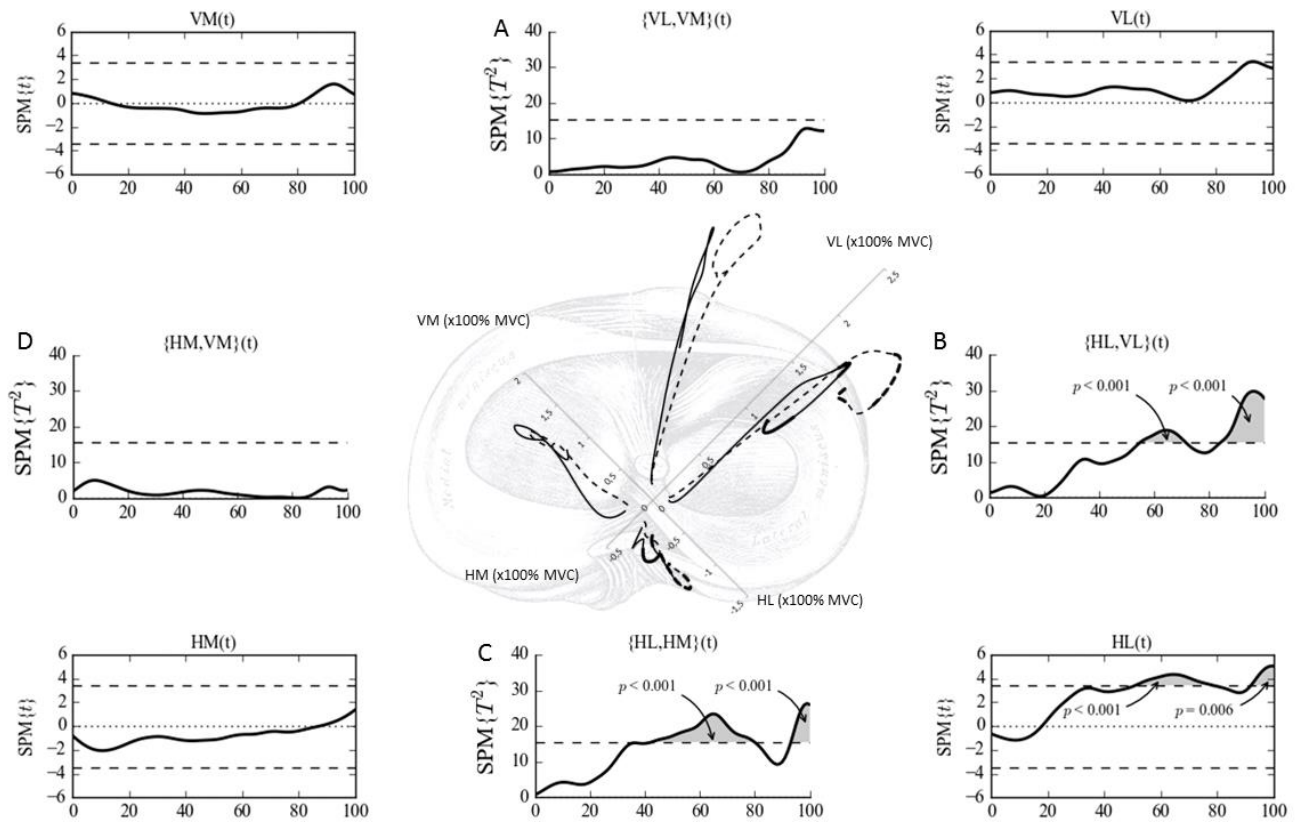


487

488 **Fig. 2**

489 Flowchart of the participants

490



491

492 **Fig. 3**

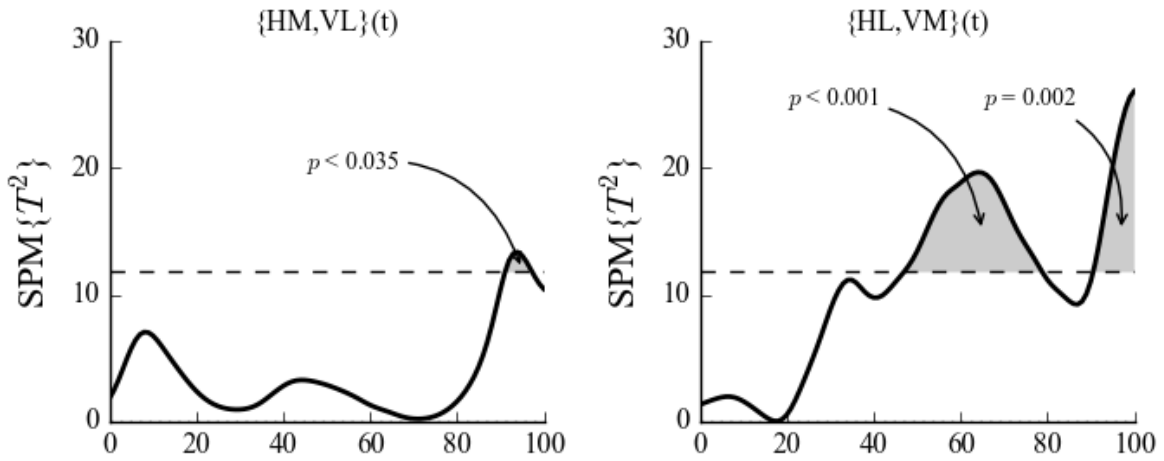
493 Top view representation of group differences.

494 *Central figure:* Differences in two-muscle activation patterns between the ACL-injured (dotted  
 495 line) and the control group (solid line) are visualized. The bold parts represent the time periods  
 496 in which significant differences between groups were found.

497 *A,B,C,D:* Trajectory level SPM analyses show the differences between groups for the anterior  
 498 {VM,VL}, lateral {HL,VL}, posterior {HM,HL} and medial {HM,VM} EMG vector. The  
 499 horizontal dashed line represents the critical threshold ( $P < 0.05$ ).

500 *Corner figures:* Trajectory level SPM analyses show differences between groups for the  
 501 individual amplitudes of VM, VL, HM and HL. The horizontal dashed line represents the  
 502 critical threshold ( $P < 0.05$ ).

503



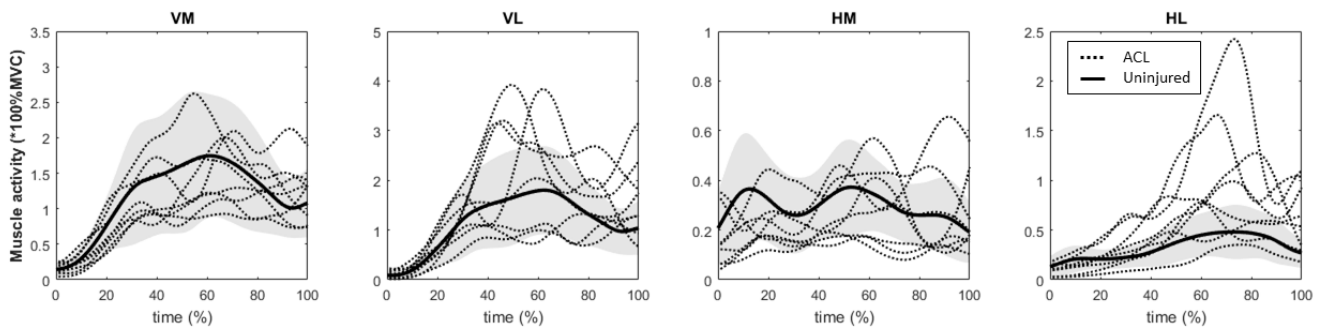
505

506 **Fig. 4**

507 Trajectory level SPM analyses show the differences between groups for the {HM, VL} and the  
508 {HL, VM} EMG vector. The horizontal dashed line represents the critical threshold ( $P < 0.05$ ).

509

510

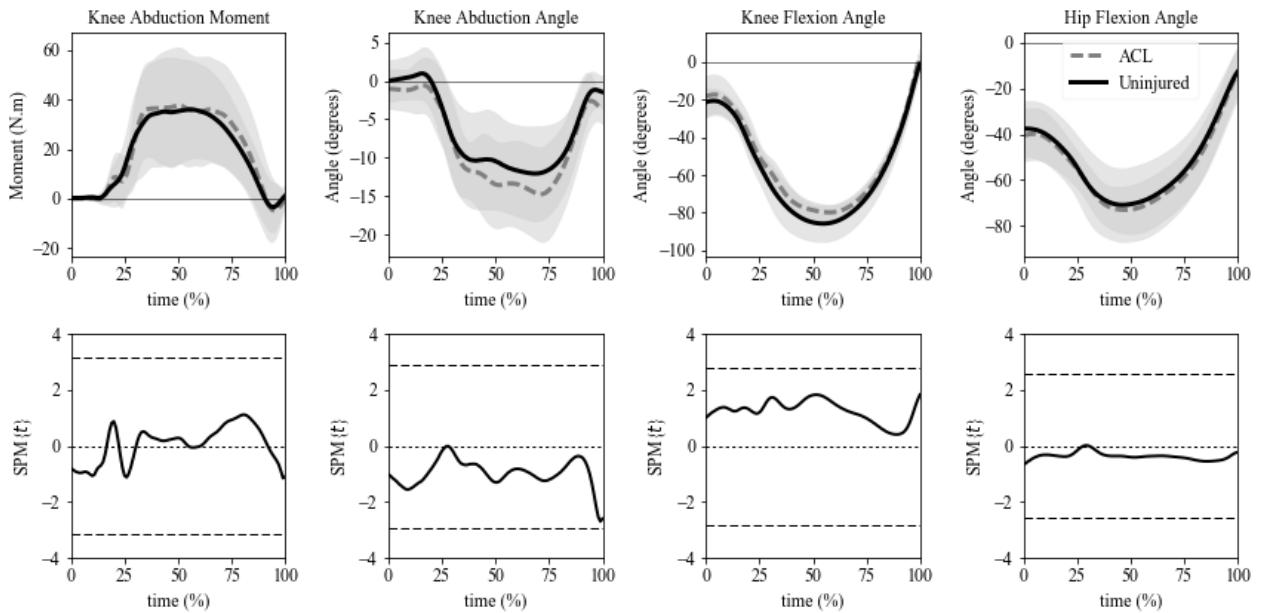


511 **Fig. 5**

512 This figure visualizes the activation of the HL, HM, VL and VM muscles. The 8 dotted lines  
513 represents the data of the ACL injured athletes. The solid line represents the average activation  
514 of the respective muscles in the control legs and the shaded zone represents the standard  
515 deviation.

516





517

518 **Fig. 6**

519 The upper figures illustrate the mean data for the respective parameters. The dotted line  
 520 represents the ACL-injured group and the bold line represents the control group. Standard  
 521 deviation clouds are represented by the shaded areas. The lower figures illustrate the SPM  
 522 output. No significant differences were found between groups for the external knee abduction  
 523 moment, knee abduction angle, knee flexion angle and the hip flexion angle over the entire time  
 524 period during DVJ. However, a clear tendency is observed for the ACL-injured group to show  
 525 larger knee abduction angles and smaller knee flexion angles, seen by the being consistently  
 526 respectively below and above 0.

527

528

529

530

531

532

533

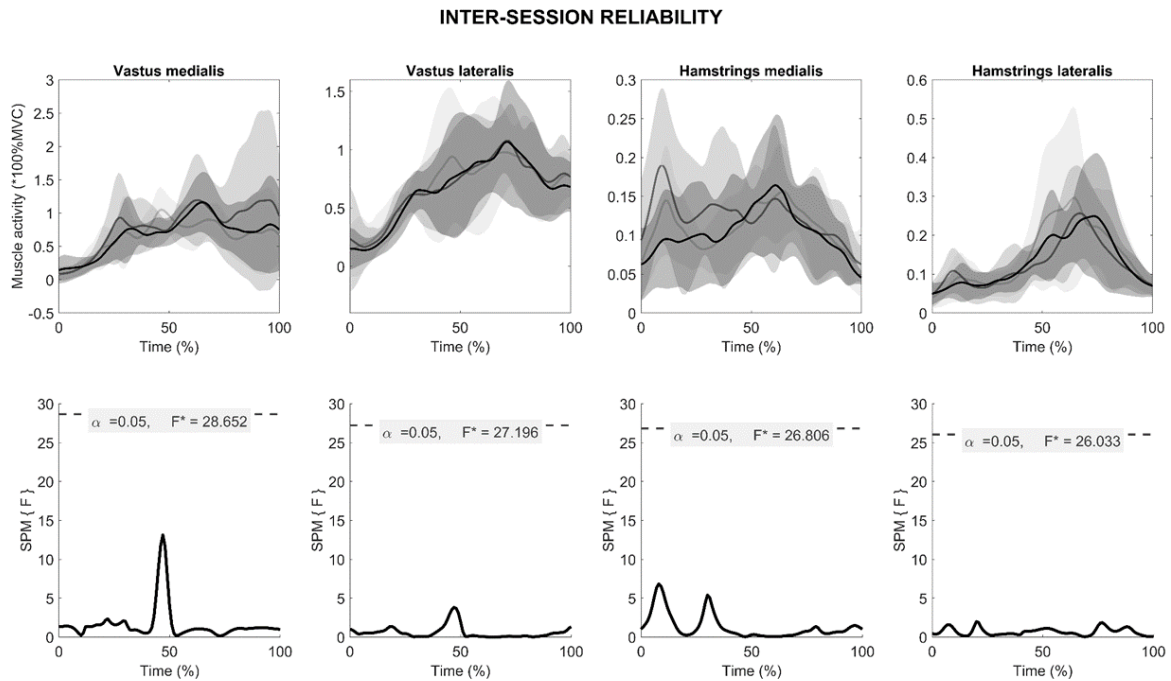
534 **Appendix – Reliability of time-varying EMG data**

535 To investigate the intra- and inter-session reliability of the time-varying EMG data, we did an  
536 additional reliability study in 4 uninjured subjects.

537 All subjects (1 female, 3 males, age  $28.5 \pm 3.5$ y height  $185.6 \pm 9.1$ cm, weight  $76.9 \pm 9.6$ kg) were  
538 involved in recreational or competitive team sports (soccer, volleyball, handball and basketball)  
539 and performed the same protocol as described in the manuscript on 3 different days. They  
540 performed the protocol always at the same time during the day and all sessions were performed  
541 in the same week (Monday, Wednesday and Friday). All data was processed in the same way  
542 as described in the manuscript.

543 As our outcome is 1 dimensional (1D) data (e.g. emg curves) and not traditional 0 dimensional  
544 (0D) data (e.g. peak/ mean values), we could not calculate traditional 0D ICC's for investigating  
545 reliability. There are no explicit tests of reliability for 1D data yet, thus instead we addressed  
546 reliability implicitly using ANOVA. In particular, if inter-session reliability is high, then we  
547 would expect intra-subject variability to be greater than inter-session variability, and thus  
548 produce a small session effect. Conversely, if inter-session reliability is low, then we would  
549 expect a large session effect.

550 To implicitly investigate the inter-session reliability, we used an SPM one-way ANOVA with  
551 1 repeated measure (e.g. session). These analyses showed no significant differences in muscle  
552 activation between the 3 different sessions as the F-curve never exceeded the critical threshold  
553 (see fig. 1). As there was no session-effect, we can conclude that inter-session reliability is high.



554

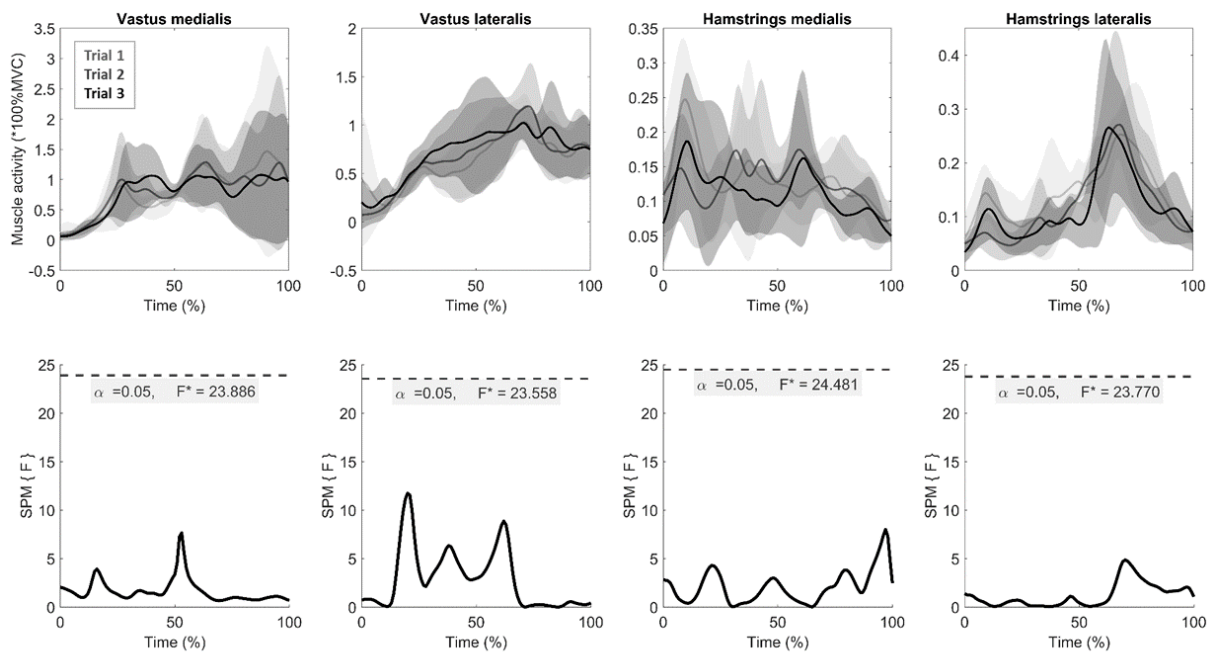
555 **Fig. 1.**

556 *The upper figures illustrate the mean data for session 1 (light grey), session 2 (dark grey) and*  
 557 *session 3 (black) for the respective muscles. Standard deviation clouds are represented by the*  
 558 *shaded areas. The lower figures illustrate the SPM output. No significant differences were*  
 559 *found between sessions as the F-curve never exceeds the critical threshold (horizontal red*  
 560 *dashed line).*

561

562 To implicitly investigate intra-session reliability, we performed another SPM one-way ANOVA  
 563 with 1 repeated measure (e.g. trial) on the data of session 1. These analyses showed no  
 564 significant differences in muscle activation between the 3 different trials (see fig. 2). As there  
 565 was no trial-effect we can conclude that intra-session reliability is high.

### INTRA-SESSION RELIABILITY



566

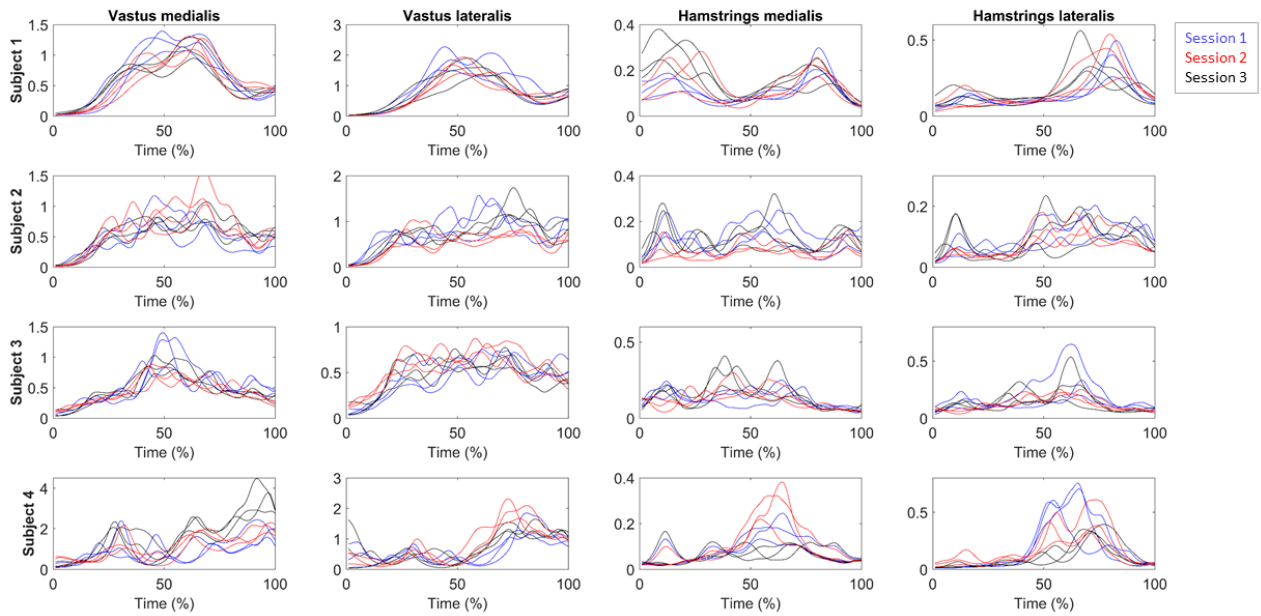
567 **Fig. 2.**

568 *The upper figures illustrate the mean data for trial 1 (light grey), trial 2 (dark grey) and trial 3*  
569 *(black) of session 1 for the respective muscles. Standard deviation clouds are represented by*  
570 *the shaded areas. The lower figures illustrate the SPM output. No significant differences were*  
571 *found between trials as the F-curve never exceeds the critical threshold (horizontal dashed*  
572 *line).*

573

574 Below (fig. 3) you can find all the individual emg data of every trial and for every session.

### INDIVIDUAL DATA



575

576 **Fig. 3.**

577 *Each row represents the emg data of another subject. All subjects performed 3 trials per session*  
578 *(session 1 = blue, session 2= red, session 3 = black).*

579

580 The figures above confirm that the time-varying data of the individual muscles is highly  
581 reliable. As ANOVA testing does not exist for vectors, the same approach as described above  
582 could not just be repeated on the vector data of the muscle pairs. However, the reliability of  
583 muscle co-activation pairs relies on (1) the reliability of measuring each individual muscle  
584 within the pairs and (2) the minimization of cross-talk between muscles. Whilst cross-talk  
585 between muscles within the pairs would inflate the amount of co-variance, its impact on the  
586 muscle pairs is the same as on the individual muscles. In both cases cross-talk has to be avoided  
587 as much as possible, which is established by careful electrode placement.

588 We did not investigate inter-rater reliability as we only had 1 rater in this study. We can assume  
589 that the rater was very consistent in electrode placement as both the quadriceps and hamstrings

590 muscles were very easy to palpate in our athlete population. Furthermore, the rater is a qualified  
591 physiotherapist with extensive palpation experience, and used the SENIAM guidelines to  
592 standardize his way of electrode placement.

593