



# Changes in DNA Methylation in *Arabidopsis thaliana* Plants Exposed Over Multiple Generations to Gamma Radiation

Pol Laanen<sup>1,2</sup>, Eline Saenen<sup>1</sup>, Mohamed Mysara<sup>1</sup>, Jorden Van de Walle<sup>1,2</sup>, May Van Hees<sup>1</sup>, Robin Nauts<sup>1</sup>, Filip Van Nieuwerburgh<sup>3,4</sup>, Stefan Voorspoels<sup>5</sup>, Griet Jacobs<sup>5</sup>, Ann Cuypers<sup>2</sup> and Nele Horemans<sup>1,2\*</sup>

<sup>1</sup> Biosphere Impact Studies, Belgian Nuclear Research Centre (SCK CEN), Mol, Belgium, <sup>2</sup> Centre for Environmental Research, Hasselt University, Diepenbeek, Belgium, <sup>3</sup> Laboratory of Pharmaceutical Biotechnology, Ghent University, Ghent, Belgium, <sup>4</sup> NXTGNT, Ghent University, Ghent, Belgium, <sup>5</sup> Vlaamse Instelling voor Technologisch Onderzoek, VITO, Mol, Belgium

## OPEN ACCESS

### Edited by:

Hua Jiang,  
Leibniz Institute of Plant Genetics  
and Crop Plant Research (IPK),  
Germany

### Reviewed by:

Daisuke Miki,  
Chinese Academy of Sciences (CAS),  
China  
Kai Tang,  
Purdue University, United States

### \*Correspondence:

Nele Horemans  
nele.horemans@sckcen.be

### Specialty section:

This article was submitted to  
Plant Cell Biology,  
a section of the journal  
Frontiers in Plant Science

**Received:** 29 September 2020

**Accepted:** 09 March 2021

**Published:** 31 March 2021

### Citation:

Laanen P, Saenen E, Mysara M, Van de Walle J, Van Hees M, Nauts R, Van Nieuwerburgh F, Voorspoels S, Jacobs G, Cuypers A and Horemans N (2021) Changes in DNA Methylation in *Arabidopsis thaliana* Plants Exposed Over Multiple Generations to Gamma Radiation. *Front. Plant Sci.* 12:611783. doi: 10.3389/fpls.2021.611783

Previous studies have found indications that exposure to ionising radiation (IR) results in DNA methylation changes in plants. However, this phenomenon is yet to be studied across multiple generations. Furthermore, the exact role of these changes in the IR-induced plant response is still far from understood. Here, we study the effect of gamma radiation on DNA methylation and its effect across generations in young *Arabidopsis* plants. A multigenerational set-up was used in which three generations (Parent, generation 1, and generation 2) of 7-day old *Arabidopsis thaliana* plants were exposed to either of the different radiation treatments (30, 60, 110, or 430 mGy/h) or to natural background radiation (control condition) for 14 days. The parental generation consisted of previously non-exposed plants, whereas generation 1 and generation 2 plants had already received a similar irradiation in the previous one or two generations, respectively. Directly after exposure the entire methylomes were analysed with UPLC-MS/MS to measure whole genome methylation levels. Whole genome bisulfite sequencing was used to identify differentially methylated regions (DMRs), including their methylation context in the three generations and this for three different radiation conditions (control, 30 mGy/h, and 110 mGy/h). Both intra- and intergenerational comparisons of the genes and transposable elements associated with the DMRs were made. Taking the methylation context into account, the highest number of changes were found for cytosines followed directly by guanine (CG methylation), whereas only limited changes in CHG methylation occurred and no changes in CHH methylation were observed. A clear increase in IR-induced DMRs was seen over the three generations that were exposed to the lowest dose rate, where generation 2 had a markedly higher number of DMRs than the previous two generations (Parent and generation 1). Counterintuitively, we did not see significant differences in the plants exposed to the highest dose rate. A large number of DMRs associated with transposable elements were found, the majority of them being hypermethylated, likely

leading to more genetic stability. Next to that, a significant number of DMRs were associated with genes (either in their promoter-associated region or gene body). A functional analysis of these genes showed an enrichment for genes related to development as well as various stress responses, including DNA repair, RNA splicing, and (a)biotic stress responses. These observations indicate a role of DNA methylation in the regulation of these genes in response to IR exposure and shows a possible role for epigenetics in plant adaptation to IR over multiple generations.

**Keywords:** ionising radiation, DNA methylation, multigenerational, adaptation, epigenetics, whole genome bisulfite sequencing (WGBS), transposable elements

## INTRODUCTION

In the last decade, the role of epigenetics in stress responses of plants, as well as their effect on gene expression has gained more attention. Epigenetic modifications, such as DNA methylation, small interfering RNA (siRNA), and histone modifications, can alter the way chromatin is packaged and can be accessed (Boyko and Kovalchuk, 2008). As such, a change in epigenetic marks can have a great impact on overall genome stability and gene expression. For example, in *Arabidopsis thaliana* DNA repeats and transposable elements (TEs) are highly correlated with cytosine methylation, which is essential for genome integrity (Vaillant and Paszkowski, 2007; Brautigam and Cronk, 2018). Stress conditions can lead to epigenetic modifications and thereby alter genome stability as well as gene expression and thus epigenetic modifications might play a role in adaptation to these stressors (Horemans et al., 2019; Schmid et al., 2018). Alterations in DNA methylation, for example, have been implicated in plant responses to several stresses (i.e., salinity, pathogen, UV, drought, water, heat stress) (Downen et al., 2012; Sahu et al., 2013; Kinoshita and Seki, 2014).

More recently, the role of epigenetics in plant responses to ionising radiation (IR) is gaining interest. Low levels of natural background IR are present everywhere on Earth as a result of cosmic radiation and naturally occurring radionuclides in the Earth's crust. However, human activities have caused a significant increase in these dose rates and this can potentially have a negative impact on the environment (e.g., the nuclear accidents in Chernobyl and Fukushima). The IR stress responses in plants has been mainly studied on a phenotypical, physiological, biochemical, and genetic level. Some effects are still under debate such as the change in flowering induction, either by resulting in earlier or later flowering (Sax, 1955; Gunckel, 1957; Daly and Thompson, 1975; Kovalchuk et al., 2007; Hwang et al., 2016; Kryvokhyzha et al., 2018), or the effect on seed germination (Kumagai et al., 2000). Ionising radiation can have severe damaging biological effects either directly, by damaging biomolecules including DNA, or indirectly, by the production of reactive oxygen species (ROS) in the organism. These ROS are products of the radiolysis of, amongst others, water and these ROS will, when not scavenged by the plant's antioxidative

defence system, lead to oxidative stress and damage to e.g., DNA molecules. As a result, DNA damage occurs often in organisms exposed to IR (West et al., 2000; Esnault et al., 2010; Dona et al., 2013; Biermans et al., 2015; Van Hoeck et al., 2017). In order to protect itself from the harmful effects of IR, processes such as oxidative stress response (i.e., increase in antioxidants) and DNA repair mechanisms will be called upon by the organism (Esnault et al., 2010; Biermans et al., 2015; van de Walle et al., 2016; Einor et al., 2016; Volkova et al., 2017). Previous research has shown that IR also affects the epigenome, of which DNA methylation has been the most studied (for an overview see Horemans et al., 2019). Pine trees from sites contaminated by the Chernobyl accident showed a dose-rate dependent increase in global DNA methylation (Kovalchuk et al., 2003; Volkova et al., 2018). A similar observation was made in soybeans that have grown in the Chernobyl exclusion zone for seven generations (Georgieva et al., 2017). However, results from *A. thaliana* sampled along radiation gradients in the exclusion zone showed some contradicting findings, demonstrating either an overall hypermethylation or hypomethylation (Kovalchuk et al., 2004; Horemans et al., 2018).

It has been established that DNA methylation of TEs is a tool to regulate their activity and it is therefore common to find high levels of DNA methylation located in these regions (Rabinowicz et al., 2003; Ikeda and Nishimura, 2015). Additionally, TE relocation has been shown to be activated by IR amongst other stressors in *A. thaliana* (Wang et al., 2016). These TEs play an important role in genetic evolution as they can result in significant genetic changes by inversion, deletion, inactivating or activating genes (Muñoz-López and García-Pérez, 2010). IR-induced hypermethylation can be seen as a defence response to prevent genome instability by prohibiting reshuffling of genetic material, such as TEs (Kovalchuk et al., 2004; Boyko et al., 2007; Horemans et al., 2018; Volkova et al., 2018).

In addition to its importance in gene regulation, DNA methylation's heritable character has recently gained interest for its potential role in acclimation and/or adaptation over generations to environmental stress conditions (Verhoeven et al., 2010; Boyko and Kovalchuk, 2011; Hauser et al., 2011; Mirouze and Paszkowski, 2011). Acclimation occurring in one generation as a method of overcoming changes in the environment or stressors has been widely studied in plants (de Azevedo Neto et al., 2005; Chinnusamy and Zhu, 2009; Chinnusamy et al., 2010). For instance, increased UV

**Abbreviations:** DMR, Differentially Methylated Region; GO, Gene Ontology; IR, Ionising Radiation; PAR, Photosynthetically Active Radiation; TE, Transposable Element; WGBS, Whole Genome Bisulfite Sequencing.

resistance was achieved by priming plants to low levels of chronic UV exposure (Hideg et al., 2013). This led to changes in antioxidant levels which enabled plants to cope better with increased oxidative stress induced by a second UV exposure. Similar indications of acclimation have been seen in plants in response to salinity and IR (Munns and Gilliam, 2015; Van Hoeck et al., 2017). Although the exact nature of priming is still not fully understood, previous studies have shown that epigenetics, including DNA methylation, and TEs might play a role in this priming mechanism (Espinas et al., 2016; Negin and Moshelion, 2020; Turgut-Kara et al., 2020). Adaptation over one or more generations to stress also remains under debate (Pecinka et al., 2009; Rasmann et al., 2012; Moller and Mousseau, 2016), nonetheless, a number of reports have demonstrated transgenerational adaptive stress responses in plants (Verhoeven and van Gurp, 2012; Suter and Widmer, 2013; Groot et al., 2016). However, with these studies it is important to keep in mind the difference between transgenerational studies, which explore the inherited effects over generations after exposure to stress in the first generation, and multigenerational studies, which explore the inherited effects over generations that are all exposed to a similar stress factor in each generation. Work on plant survival and reproduction in the Chernobyl exclusion zone, the Fukushima affected area, as well as studies done in lab conditions continue to contribute to the uncovering of a potential adaptation to IR exposure (Zaka, 2002; Geras'kin et al., 2005; Danchenko et al., 2009; Klubicova et al., 2012; Pozolotina et al., 2012; Rashydov and Hajdich, 2015; Georgieva et al., 2017; Kryvokhyzha et al., 2018). As mentioned, heritable epigenetic changes, such as DNA methylation, might play an important role in the adaptive responses to environmental stress (Schmid et al., 2018; Horemans et al., 2019).

To investigate the potential role of DNA methylation in plant responses to IR, exposure within one generation and over generations was performed in this study. It is hypothesised that IR induces a different cytosine DNA methylation profile in plants that are exposed compared to unexposed plants. Secondly, it is expected that plants with a different history in IR exposure will respond differently, in respect of DNA methylation, compared to plants that did not receive any prior IR exposure. In order to study this, we exposed three generations of *A. thaliana* plants [Parent (P0), Generation 1 (S1), Generation 2 (S2)] to five different dose rate conditions (natural background radiation ( $\gamma_0$ ), 30 mGy/h ( $\gamma_{30}$ ), 60 mGy/h ( $\gamma_{60}$ ), 110 mGy/h ( $\gamma_{110}$ ), and 430 mGy/h ( $\gamma_{430}$ )) in a multigenerational experiment. First, the entire methylomes were analysed with UPLC-MS/MS to measure whole genome methylation levels. Secondly, whole genome bisulfite sequencing (WGBS) was used to identify differentially methylated regions (DMRs), including their methylation context. Based on this data, (1) both an intra- and intergenerational comparisons of the genes and TEs associated with the DMRs were made across the gamma radiation exposure conditions; and (2) a gene ontology enrichment was performed to discover the processes that might be regulated by IR-induced DNA methylation.

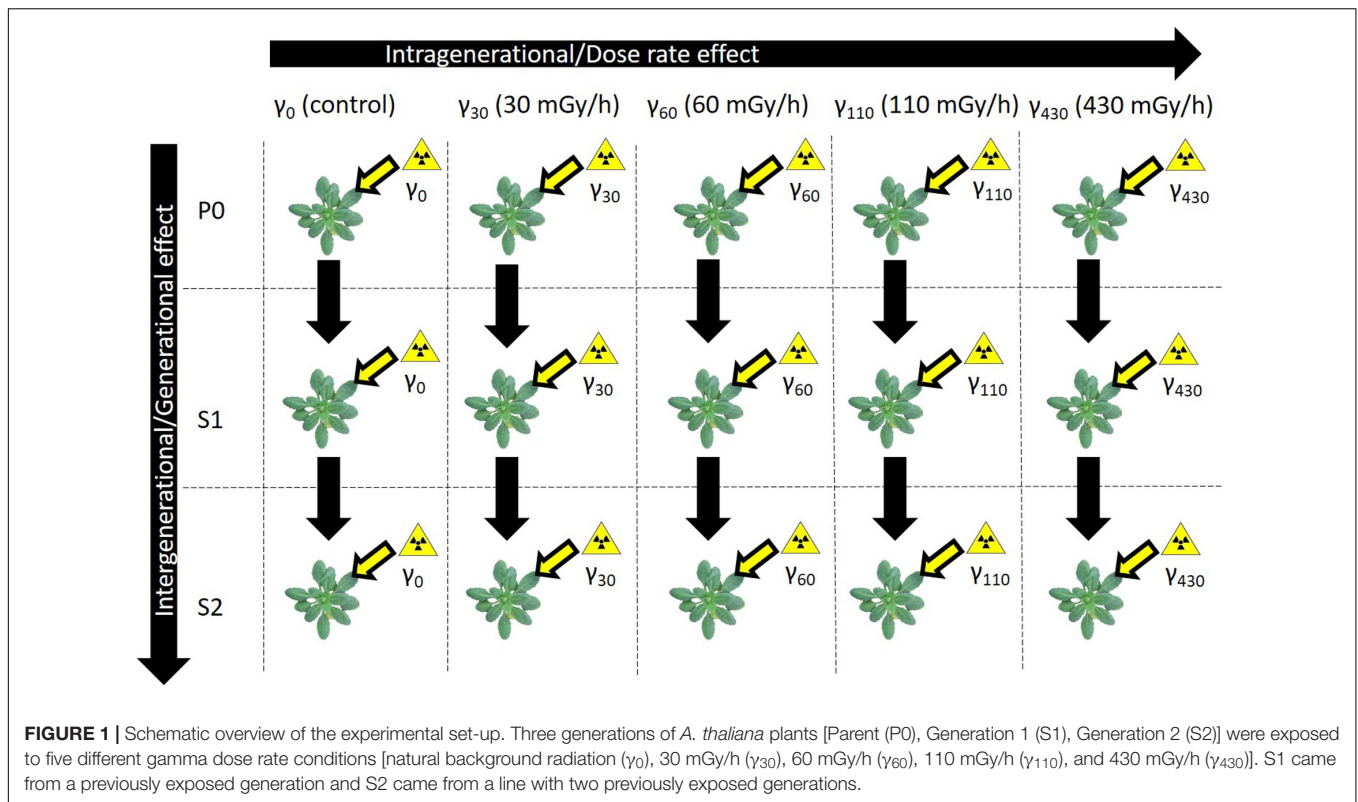
## MATERIALS AND METHODS

### Plant Material and Gamma Treatment

In order to synchronise germination, *A. thaliana* (Columbia) seeds were vernalised on moist filter paper during 3 days at 4°C. The seeds of three different generations with a different irradiation background (2 weeks exposure to either  $\gamma_0$  = natural background radiation (control),  $\gamma_{30}$  = 30 mGy/h,  $\gamma_{60}$  = 60 mGy/h,  $\gamma_{110}$  = 110 mGy/h, or  $\gamma_{430}$  = 430 mGy/h) were used; P0 seeds originated from our standard seed stock and had never been irradiated, S1 seeds were harvested from the previously irradiated P0 plants and S2 seeds were harvested from previously irradiated S1 plants. This resulted in plants that had no previous history of irradiation (P0) and plants that already underwent the same gamma radiation treatments in one (S1) or two (S2) previous generations (Figure 1). Subsequently, the seeds were grown according to Vanhoudt et al. (2014) on cut-off plugs from 1.5 mL polyethylene centrifuge tubes filled with a Hoagland solution that was solidified with 0.6% agar and grown hydroponically in a growth cabinet (Snijders Scientific, Microclima 1000E) under a 14 h photoperiod (photosynthetically active radiation (PAR) of 200  $\mu\text{mol m}^{-2} \text{s}^{-1}$  at the leaf level) with 65% humidity and a day/night temperature of 22°C/18°C. Roots were aerated during the entire course of the experiment and Hoagland solution was refreshed twice a week. When plants were 7 days old, their most vulnerable life stage for irradiation (Biermans et al., 2015), they were transferred to the irradiation unit of SCK CEN where they were exposed to gamma radiation during 14 days coming from a panoramic  $^{137}\text{Cs}$ -source. They were exposed to different dose rates ( $\gamma_{30}$  = 30 mGy/h,  $\gamma_{60}$  = 60 mGy/h,  $\gamma_{110}$  = 110 mGy/h, or  $\gamma_{430}$  = 430 mGy/h) of gamma radiation. These dose rate conditions were chosen based on previous experiments performed in our group. Under these conditions, *A. thaliana* plants exhibited radiation-induced biochemical and physiological changes, yet were still able to recover and produce viable following generations (Vanhoudt et al., 2010, 2014; Biermans et al., 2015; van de Walle et al., 2016). For each condition 2 containers containing 36 plants each, were used. After 14 days they received a total dose of, respectively, 7, 13, 29, and 156 Gy. During the irradiation period, plants were grown at 24°C and light was supplied by LED lights for 14 h photoperiodic period with a PAR of 200  $\mu\text{mol m}^{-2} \text{s}^{-1}$  at the leaf level. Control plants were grown in a separate chamber at the same temperature and light conditions. After 14 days of irradiation fresh weight of plants was measured and the plant rosettes were harvested by snap-freezing them in liquid nitrogen and stored at -80°C until further analysis. Different treatments are indicated with a generation identifier and a treatment identifier. For example, P0 $\gamma_{60}$  refers to plants of the P0 generation that were exposed to the second gamma treatment (60 mGy/h), while S2 $\gamma_{430}$  refers to plants exposed to the highest dose rate (430 mGy/h) treatment in the S2 generation.

### DNA Extraction

Frozen plant samples (50–100 mg) were ground using a Mixer Mill MM 400 (Retsch) for 3 min at 30 Hz prior to the



extractions. DNA was extracted from the ground material using Zymo ZR Plant/Seed DNA MicroPrep™ kit according to the manufacturers' instructions. The DNA quantity and integrity were determined spectrophotometrically at 230, 260, and 280 nm (Nanodrop, Isogen Life Science, De Meern, The Netherlands) and via gel electrophoresis (Bioanalyser, Agilent Technologies, Santa Clara, CA, United States), respectively.

## Global Methylation

The overall 5 methylcytosine (5mC) percentage was determined via UPLC, using five biological replicates of each (generational and dose rate) condition. One  $\mu\text{g}$  of extracted DNA was digested for 2 h at 37°C using the DNA Degradase Plus protocol according to Zymo Research Corporation (United States) which allows for a quick generation of single nucleotides from total DNA. Concentrations of 2'-deoxycytidine (dC) and 5-methyl-2'-deoxycytidine (5mdC) were measured with an Acquity Ultra Performance Liquid Chromatography (UPLC) system (Waters, Milford, MA, United States) coupled to a PDA detector (Waters, Milford, MA, United States) and a Micromass Quattro Premier XE mass spectrometer (Waters, United States). Chromatograms were analysed using Masslynx software v4.1 (Waters, Milford, MA, United States). Levels of dC and 5mdC were calculated based on the corresponding standard curves. The relative content of 5mdC was expressed as a percentage (%5mdC) with respect to the total amount of cytosine (dC + 5mdC). Several quality control measures were in place during the analysis. From a home-extracted control *A. thaliana* DNA pool several samples were used to monitor the method precision. Further, control standards

and method blanks were analysed. Duplicate analysis of samples was performed whenever possible.

The statistical analysis of the global DNA methylation levels was performed using the open source software package R (R i386 3.1.0, R Foundation for Statistical Computing, Vienna, Austria). The normal distribution and homoscedasticity of our data were tested with a Shapiro-Wilk and Bartlett test, respectively. A one-way ANOVA test was applied to results from one generation or one treatment to identify any statistical differences between treatments and generations, respectively. When significant differences ( $p < 0.05$ ) were found, a Tukey HSD test was applied to identify the specific differences between groups.

## Bisulfite Sequencing

Three different treatments ( $\gamma_0 =$  control,  $\gamma_{30} = 30$  mGy/h,  $\gamma_{110} = 110$  mGy/h) per generation (P0, S1, S2) were selected for sequencing. This resulted in a total of nine different conditions with five biological replicates for each condition. Concentration of the extracted DNA was measured using the "Quant-it Picogreen dsDNA assay kit" (Life Technologies, Grand Island, NY, United States). Subsequently, 400–600 ng of gDNA was fragmented to 300 bp using the Covaris S2 focused-ultrasonicator (Covaris, Woburn, Massachusetts, United States). The size of the fragmented DNA was checked on a High sensitivity DNA chip (Agilent Technologies, Santa Clara, CA, United States). Library preparation with NEBNext Ultra II DNA library prep kit (New England Biolabs, Ipswich, MA, United States) was performed using methylated adapters, according to the manufacturer's protocol. Size selection on a 2% EX Agarose E-Gel (Thermo

Fisher Scientific, MA, United States) was performed on the resulting library, making a 300–1,000 bp gel cut followed by a purification with the Gel DNA recovery kit (Zymo Research, Irvine, CA, United States). Bisulfite conversion was performed with the EZ DNA Methylation Gold kit (Zymo Research, Irvine, CA, United States) according to the manufacturer's protocol, followed by an additional purification with AMPure XP beads (Beckman Coulter, Brea, CA, United States) (beads:sample ratio of 5:1). An enrichment PCR was performed with KAPA Hifi hotstart Uracil + Ready mix (Kapa Biosystems, Wilmington, MA, United States) in a 13 cycles PCR reaction, followed by a purification with AMPure XP beads (Beckman Coulter, Brea, CA, United States) (beads:sample ratio of 1:1). Libraries were quantified by qPCR, according to Illumina's protocol 'Sequencing Library qPCR Quantification protocol guide', version February 2011. A High sensitivity DNA chip (Agilent Technologies, Santa Clara, CA, US) was used to control the library's size distribution and quality. Sequencing was performed on 2 high throughput Illumina NextSeq 500 flow cells generating PE2 × 75 bp reads. The flowcells were clustered with 2.3 pM library and 15% Phix control library.

## Differentially Methylated Region Assignment and Annotation

CLC Genomics Workbench 20.0<sup>1</sup> was used to analyse the data. The paired reads were mapped to the reference genome (TAIR10.31)<sup>2</sup> with “Map Bisulfite reads to reference” module, using non-directional approach (applying the default parameters). Differentially methylated regions were assigned using “Call methylation level” module by doing all pairwise comparison within the same generation or within the same treatment dose (resulting in 18 sets of DMRs identified for the different comparisons). The default parameters were applied (while specifying the minimum high-confidence site-coverage = 5 and minimum number of samples = 3), reporting the methylation levels for CG, CHG, and CHH contexts separately. The *p*-values produced from ANOVA statistical modelling were corrected using Benjamini Hochberg approach (using *p.adjust* in R v 3.5.0). Annotation to the nearest genes was added to each of the DMRs using “Annotate by nearby gene” module, using reference genome's genes set. Additionally, the annotation to the nearest transposable elements (TEs) was added with *closest* module in bedtools package, using the “TAIR10 transposable elements” data set (downloaded on 18/03/2020) from the TAIR website<sup>2</sup>.

## Differentially Methylated Region Filtering and Functional Analysis

The filtering criteria to find DMRs associated with either gene regions (promoter or gene body) or TEs, were a  $p \leq 0.05$  and at least 20% difference in their methylation levels (referred to as methylation difference). This cut-off was chosen in order to ensure a definite methylation difference was being studied. Here, the methylation difference is calculated by comparing either a

higher dose rate with a lower dose rate (i.e., S1 $\gamma_0$  vs. S1 $\gamma_{30}$ ), or by comparing an older generation with a younger one (i.e., P0 $\gamma_{30}$  vs. S1 $\gamma_{30}$ ). A hypermethylated DMR in P0 $\gamma_{30}$  vs. S1 $\gamma_{30}$  means that the region in S1 $\gamma_{30}$  has a higher methylation level compared to that of P0 $\gamma_{30}$ .

For the filtering in DMRs associated with promoter regions, we chose to filter for DMRs with a distance to the nearest gene of  $2 \text{ kbp} \leq X > 0$ . For those associated with gene bodies the filter was set at a distance of 0 to the nearest gene. DMRs associated with TEs were found by filtering for a distance of 0 to the nearest TE. For the functional analysis of the genes with DMRs, either in their promoter regions or their gene bodies, a gene ontology (GO) term enrichment was done using Metascape (Zhou Y. et al., 2019). For the analysis of overlapping genes in our selected comparisons, we used an online Venn diagram tool<sup>3</sup> where we used the genes per comparison result as input.

## RESULTS

### At a Global Methylation Level the First Offspring Generation Showed the Highest Radiation Response

In the parent generation (P0) no significant dose rate dependent effects were seen on global methylation level (Figure 2). In the first generation (S1), however, dose rate dependent differences in comparison with control conditions were observed at the two highest dose rates  $\gamma_{110}$  and  $\gamma_{430}$ . Also in the second generation (S2) a significantly higher global methylation level compared to the control plants was present, but only after exposure to the highest dose rate. The significant increase in methylation percentage in the S1 also resulted in significant increases between the S1 and the other two generations at these same dose rates. In addition, a deeper analysis of the samples using WGBS was performed and the global methylation level was calculated using the WGBS result (Supplementary Figure S1). In general, these data followed the UPLC-MS/MS data but showed a higher variation and thus no significant difference were found within the WGBS global methylation levels. The global weighted methylation levels, calculated using methods described in Schultz et al. (2012), are shown in the Supplementary Table S1. The global weighted methylation levels in this study did not significantly vary between treatments. For control values these are on average ~30% CG, ~13.5% CHG, and ~6.8% CHH, which is in line with previous studies in which DNA methylation levels in *A. thaliana* leaves is studied (Niederhuth et al., 2016; Bartels et al., 2018; Zhou M. et al., 2019).

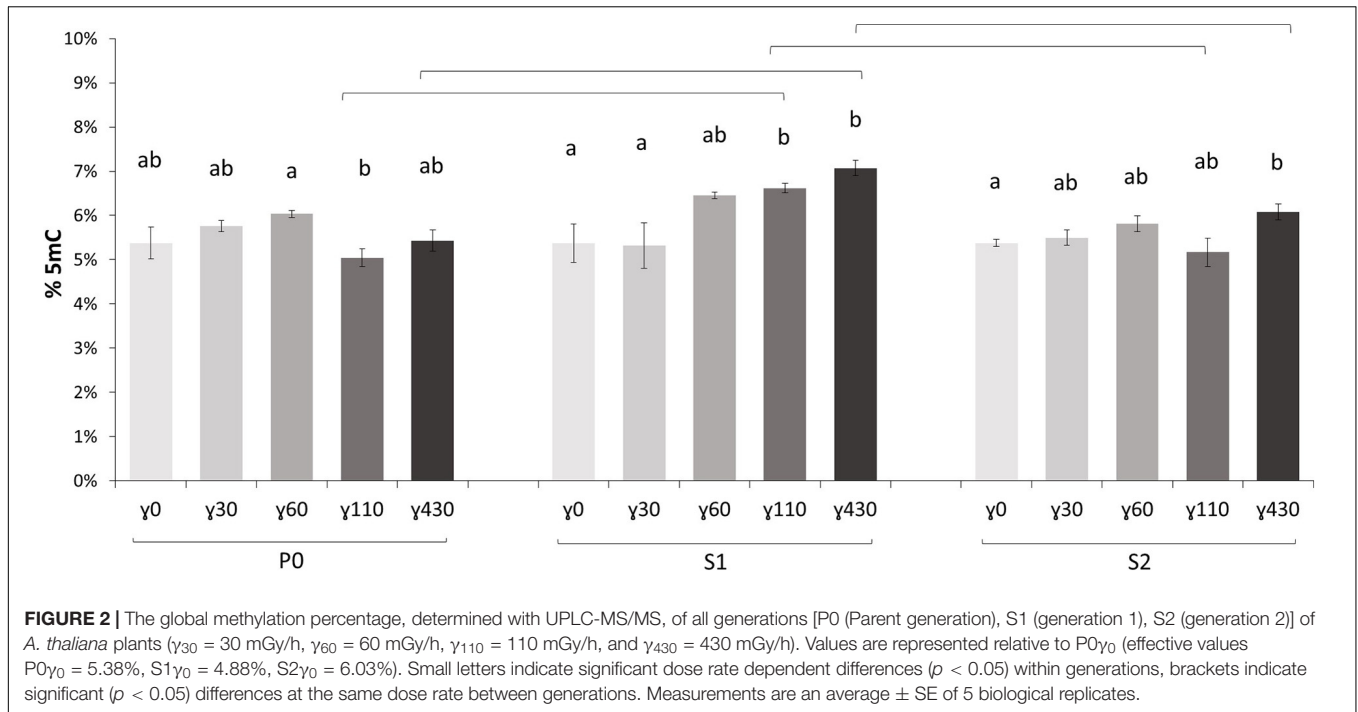
### Differentially Methylated Regions Are Predominantly Found in CG Methylation Context and at Lowest Dose Rate and Later Generations

For the WGBS analyses a limited set of three dose rates were used ( $\gamma_0$  = control,  $\gamma_{30}$  = 30 mGy/h, and  $\gamma_{110}$  = 110 mGy/h).

<sup>1</sup><https://digitalinsights.qiagen.com>

<sup>2</sup>[www.arabidopsis.org](http://www.arabidopsis.org)

<sup>3</sup><http://bioinformatics.psb.ugent.be/webtools/Venn/>



To check for global differences between generations or treatments, a pairwise comparison was performed looking for differences only between two different radiation treatments of the same generation (intragenerational) or two different generations for the same treatment (intergenerational). A distinction was made between the different methylation contexts for which the methylated cytosine (C) was either followed by a guanine (CG) or another nucleotide by a guanine (CHG) or not followed by a guanine (CHH).

In **Tables 1, 2**, the number of differential hyper- and hypomethylated regions (DMRs), respectively, is represented accounting for a methylation difference of  $>20\%$ . This cut-off was chosen in order to ensure a definite methylation difference was being studied. A more extensive overview of DMRs with different cut-offs of methylation differences (5, 10, and 30%) can be found in the **Supplementary Tables S2–S5**. Highest differences were found for CG methylation, whereas only limited changes in CHG methylation occurred and no changes in CHH methylation were observed (**Tables 1, 2**). Furthermore, within the generations over the different dose rates (intragenerational), the largest number of DMR changes occurred between the  $\gamma_0$  and  $\gamma_{30}$  groups, with the majority occurring in S2 generation (i.e., 473 hypermethylated DMRs, 316 hypomethylated DMRs in S2 $\gamma_0$  compared to S2 $\gamma_{30}$ ). However, it is important to note that no significant changes are observed in the parent generation after exposure to IR. Intergenerationally, the largest number of (both hypo- as hypermethylated) DMRs occurred between generations after exposure to  $\gamma_{30}$ , with the major change between S1 $\gamma_{30}$  vs. S2 $\gamma_{30}$  (1,057 hypermethylated DMRs in the second generation compared to the first generation, whereas 833 DMRs were found to be hypomethylated). Here, it is also clear that no

changes occur in the  $\gamma_0$  group and few changes occur in the  $\gamma_{110}$  group.

## Differentially Methylated Regions Associated With Genes and Transposable Elements

For detailed analysis, DMRs were split up into those associated with the promoter associated region ( $<2$  kbp upstream of the gene start), gene body, or TEs. Looking into the DMRs associated with the promoter region (**Table 3**), the highest number of affected genes (either hypo- or hypermethylated) are found over the  $\gamma_{30}$ -exposed generations and more specifically in the second generation. Also between the control and  $\gamma_{30}$  dose rates, we see a higher number of DMRs associated with promoter regions. A similar observation was made in DMRs associated with the gene body i.e., DMRs that overlap, at least partially, with the gene body sequence (**Table 3**), with a strong generation effect resulting in 345 hypo- and 464 hypermethylated DMRs between S1 $\gamma_{30}$  and S2 $\gamma_{30}$ . Additionally, the biggest dose-rate dependent effect was observed in S2 with 140 and 189 hypo- and hypermethylated DMRs in S2 $\gamma_0$  vs. S2 $\gamma_{30}$ . Again, the highest dose rate ( $\gamma_{110}$ ) does not affect DMRs as strongly as  $\gamma_{30}$ . A list of genes associated with DMRs in their promoter regions and/or gene bodies can be accessed through Gene Expression Omnibus (GEO), as specified in the “Data Availability Statement” section.

The link between DMRs and TEs was studied by selecting for DMRs located within or at least overlapping with TE sequences. From this data it was observed that a large number of DMRs were associated with TEs, with the majority of them being hypermethylated (**Table 3**).

**TABLE 1** | The number of hypermethylated DMRs (sorted by methylation context) that were identified after the comparison of the entire methylome of *A. thaliana*.

Hypermethylated							
Intragegenerational (dose rate effects)				Intergenerational (generation effects)			
	CG	CHG	CHH		CG	CHG	CHH
P0 $\gamma_0$ vs. P0 $\gamma_{30}$	0	0	0	P0 $\gamma_0$ vs. S1 $\gamma_0$	0	0	0
P0 $\gamma_0$ vs. P0 $\gamma_{110}$	0	0	0	P0 $\gamma_0$ vs. S2 $\gamma_0$	0	0	0
P0 $\gamma_{30}$ vs. P0 $\gamma_{110}$	0	0	0	S1 $\gamma_0$ vs. S2 $\gamma_0$	0	0	0
S1 $\gamma_0$ vs. S1 $\gamma_{30}$	69	0	0	P0 $\gamma_{30}$ vs. S1 $\gamma_{30}$	92	1	0
S1 $\gamma_0$ vs. S1 $\gamma_{110}$	2	0	0	P0 $\gamma_{30}$ vs. S2 $\gamma_{30}$	176	1	0
S1 $\gamma_{30}$ vs. S1 $\gamma_{110}$	21	0	0	S1 $\gamma_{30}$ vs. S2 $\gamma_{30}$	1,057	2	0
S2 $\gamma_0$ vs. S2 $\gamma_{30}$	473	1	0	P0 $\gamma_{110}$ vs. S1 $\gamma_{110}$	0	0	0
S2 $\gamma_0$ vs. S2 $\gamma_{110}$	1	0	0	P0 $\gamma_{110}$ vs. S2 $\gamma_{110}$	0	0	0
S2 $\gamma_{30}$ vs. S2 $\gamma_{110}$	7	0	0	S1 $\gamma_{110}$ vs. S2 $\gamma_{110}$	6	0	0

Eighteen pairwise comparisons were made either between generations [P0 (Parent generation), S1 (generation 1), S2 (generation 2)] for the same dose rate ( $\gamma_{30}$  (30 mGy/h),  $\gamma_{110}$  (110 mGy/h),  $\gamma_0$  [control condition (<0.1  $\mu$ Gy/h)] or between different dose rates of the same generation (Methylation difference of > 20%) ( $p \leq 0.05$ ).

**TABLE 2** | The number of hypomethylated DMRs (sorted by methylation context) that were identified after the comparison of the entire methylome of *A. thaliana*.

Hypomethylated							
Intragegenerational (dose rate effects)				Intergenerational (generation effects)			
	CG	CHG	CHH		CG	CHG	CHH
P0 $\gamma_0$ vs. P0 $\gamma_{30}$	0	0	0	P0 $\gamma_0$ vs. S1 $\gamma_0$	0	0	0
P0 $\gamma_0$ vs. P0 $\gamma_{110}$	0	0	0	P0 $\gamma_0$ vs. S2 $\gamma_0$	0	0	0
P0 $\gamma_{30}$ vs. P0 $\gamma_{110}$	0	0	0	S1 $\gamma_0$ vs. S2 $\gamma_0$	0	0	0
S1 $\gamma_0$ vs. S1 $\gamma_{30}$	64	0	0	P0 $\gamma_{30}$ vs. S1 $\gamma_{30}$	95	1	0
S1 $\gamma_0$ vs. S1 $\gamma_{110}$	0	0	0	P0 $\gamma_{30}$ vs. S2 $\gamma_{30}$	103	0	0
S1 $\gamma_{30}$ vs. S1 $\gamma_{110}$	17	0	0	S1 $\gamma_{30}$ vs. S2 $\gamma_{30}$	833	2	0
S2 $\gamma_0$ vs. S2 $\gamma_{30}$	316	0	0	P0 $\gamma_{110}$ vs. S1 $\gamma_{110}$	0	0	0
S2 $\gamma_0$ vs. S2 $\gamma_{110}$	5	0	0	P0 $\gamma_{110}$ vs. S2 $\gamma_{110}$	0	0	0
S2 $\gamma_{30}$ vs. S2 $\gamma_{110}$	8	0	0	S1 $\gamma_{110}$ vs. S2 $\gamma_{110}$	8	0	0

Eighteen pairwise comparisons were made either between generations [P0 (Parent generation), S1 (generation 1), S2 (generation 2)] for the same dose rate ( $\gamma_{30}$  (30 mGy/h),  $\gamma_{110}$  (110 mGy/h),  $\gamma_0$  [control condition (<0.1  $\mu$ Gy/h)] or between different dose rates of the same generation (Methylation difference of > 20%) ( $p \leq 0.05$ ).

**TABLE 3** | Number of genes with differentially methylated regions (DMRs) (CG) found in the promoter associated regions (<2 kbp upstream), gene bodies, and transposable elements (TEs) of *A. thaliana* divided in hypo- and hyper methylation.

Intergenerational (generational effect)							
Comparison	Hypo			Hyper			
	Promoter associated region	Gene body	TEs	Promoter associated region	Gene body	TEs	
P0 $\gamma_{30}$ vs. S1 $\gamma_{30}$	33	34	15	31	38	12	
P0 $\gamma_{30}$ vs. S2 $\gamma_{30}$	34	42	5	69	60	35	
S1 $\gamma_{30}$ vs. S2 $\gamma_{30}$	255	345	95	327	464	134	
S1 $\gamma_{110}$ vs. S2 $\gamma_{110}$	0	3	0	5	1	3	
Intragegenerational (dose rate effects)							
S1 $\gamma_0$ vs. S1 $\gamma_{30}$	31	20	10	27	26	14	
S1 $\gamma_0$ vs. S1 $\gamma_{110}$	0	0	0	1	0	0	
S1 $\gamma_{30}$ vs. S1 $\gamma_{110}$	7	6	4	7	12	4	
S2 $\gamma_0$ vs. S2 $\gamma_{30}$	90	140	23	165	189	75	
S2 $\gamma_0$ vs. S2 $\gamma_{110}$	3	2	2	1	0	0	
S2 $\gamma_{30}$ vs. S2 $\gamma_{110}$	2	2	1	1	3	0	

Methylation difference of > 20%) ( $p \leq 0.05$ ) ( $\gamma_{30}$  (30 mGy/h),  $\gamma_{110}$  (110 mGy/h),  $\gamma_0$  [control condition (<0.1  $\mu$ Gy/h)], P0 (Parent generation), S1 (generation 1), S2 (generation 2).

Similar as to what is observed for genes associated with DMRs (either in the promoter region or the gene body), the second generation has the highest number of TEs associated with DMRs. In addition, the plants in the  $\gamma_{30}$  condition have a higher number of differentially methylated TEs compared to those in the control and  $\gamma_{110}$  groups. However, in the case of the TEs, there is a stronger link with hypermethylation than hypomethylation than was seen in the genes. A list of the affected TEs can be accessed through Gene Expression Omnibus (GEO), as specified in the “Data Availability Statement” section. The global methylation level including the location of the DMRs per chromosome for  $S2\gamma_0$  vs.  $S2\gamma_{30}$ , as identified in this analysis, is represented in **Figure 3**, similar representations for the comparisons  $P0\gamma_{30}$  vs.  $S1\gamma_{30}$ ,  $P0\gamma_{30}$  vs.  $S2\gamma_{30}$ , and  $S1\gamma_{30}$  vs.  $S2\gamma_{30}$  can be found in the **Supplementary Figures S2–S4**. The average methylation levels over the different regions of the genome (<2 kb upstream promoter-associated region, gene body, and the region 2 kb downstream from the gene) per condition and per methylation context are presented in the **Supplementary Figure S5**. As expected, CG methylation is the biggest contributor in the gene methylation.

## Genes With Differentially Methylated Regions Linked to Stress Responses

The gene ontology (GO) term enrichment of genes associated with DMRs was split between those with affected promoter regions and those with affected gene bodies. Each was also divided into hypo- and hypermethylated DMRs. The location of DNA methylation in respect to a gene is important to its regulatory function, as DMRs located in the promoter-associated region will have a different effect than those found in the gene body. By looking at these DMRs individually based on their location, it will give a better insight into the biological processes that are affected after exposure to IR in specific generations (intragenerational, different dose rates) or over three generations (intergenerational, within one dose rate).

In the intergenerational GO enrichment analysis for promoter regions (**Figure 4**), an enrichment for “ribosome biogenesis” and “rRNA processing” was observed in the hypomethylated DMRs in promoter regions between  $S1\gamma_{30}$  vs.  $S2\gamma_{30}$ . For the hypermethylated DMRs in the promoter regions, an enrichment for “RNA splicing” is observed in  $P0\gamma_{30}$  vs.  $S2\gamma_{30}$  (**Figure 4**). An enrichment for “RNA splicing” is also observed in the intragenerational analysis ( $S2\gamma_0$  vs.  $S2\gamma_{30}$ ) of hypermethylated DMRs in the promoter regions along with an enrichment for the “positive regulation of transcription by RNA polymerase II” (**Figure 4**). The intragenerational analysis of hypomethylated DMRs in the promoter-associated regions yielded no significantly enriched GO terms.

For the DMRs in gene bodies, the intergenerational GO term analysis of the hypermethylated DMRs shows an enrichment for “chromosome organisation” in the comparison between the second generation and previously unexposed plants of the parent generation ( $P0\gamma_{30}$  vs.  $S2\gamma_{30}$ ) (**Figure 5**). Between the second generation and first generation ( $S1\gamma_{30}$  vs.  $S2\gamma_{30}$ ), an enrichment for “cell plate formation in plant-type cell wall biogenesis,”

“double-strand break repair,” and “trichrome branching” is observed in the hypermethylated DMRs (**Figure 5**). For the hypomethylated DMRs of the gene bodies an enrichment for “plastoquinone biosynthetic process,” “cellular response to DNA damage stimulus,” “negative regulation of flower development,” and “tetraterpenoid biosynthesis” is observed, in the comparison between the first and second generation of  $\gamma_{30}$ -exposed plants ( $S1\gamma_{30}$  vs.  $S2\gamma_{30}$ ) (**Figure 5**).

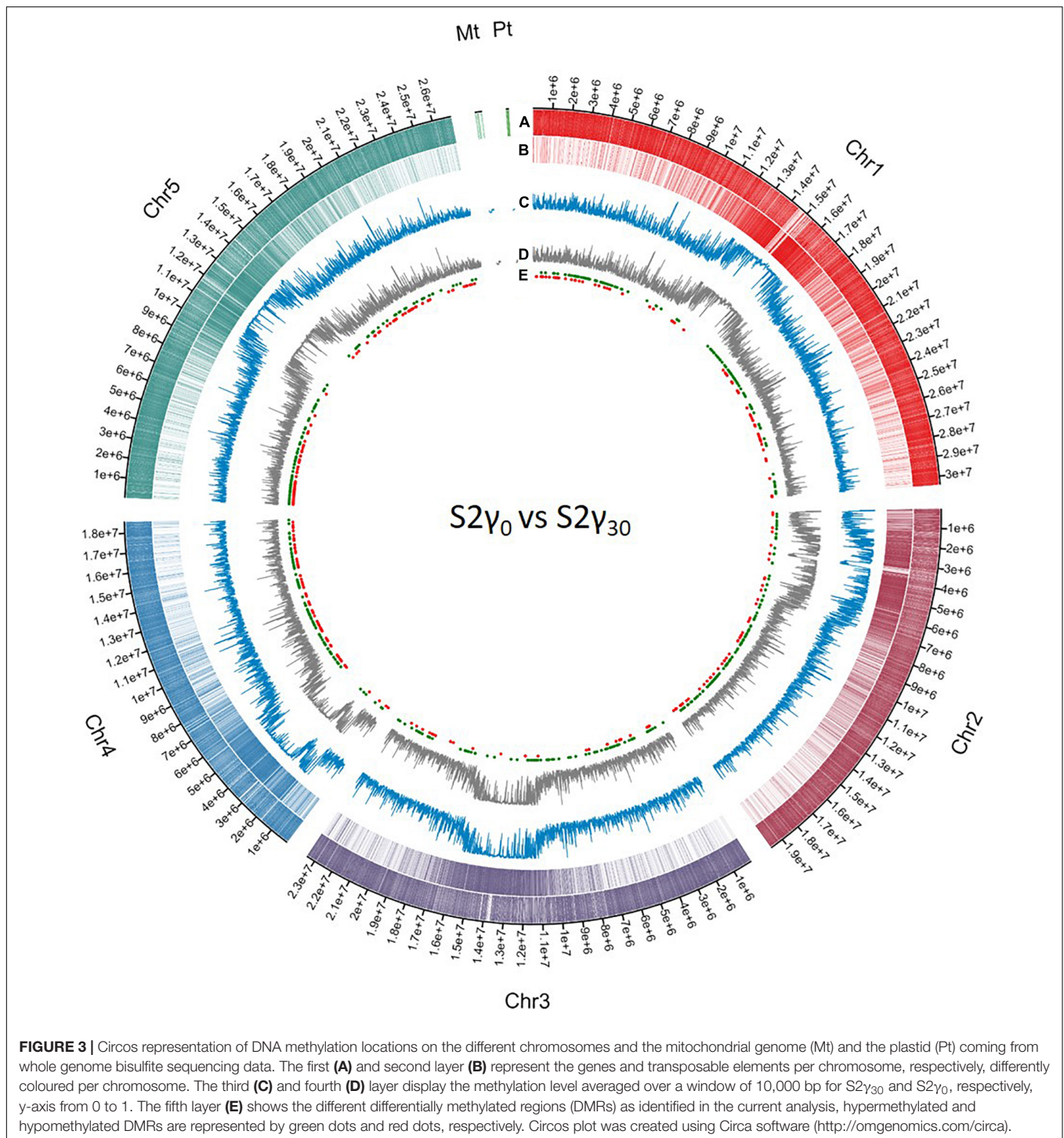
The intragenerational GO enrichment analysis of the hypermethylated DMRs associated with gene bodies shows an enrichment for the “response to osmotic stress,” “regulation of response to stress,” and “DNA repair” in the comparison within the second generation between the control plants and  $\gamma_{30}$ -exposed plants ( $S2\gamma_0$  vs.  $S2\gamma_{30}$ ) (**Figure 5**). In the hypomethylated DMRs in the gene bodies an enrichment for “chromosome organisation” is observed in the second generation between the control and  $\gamma_{30}$  group ( $S2\gamma_0$  vs.  $S2\gamma_{30}$ ) (**Figure 5**).

In the **Supplementary Figures S6, S8** Venn diagrams of overlapping genes (for both those affected by promoter associated DMRs and those with gene body associated DMRs) between the different comparisons within  $\gamma_{30}$  ( $P0\gamma_{30}$  vs.  $S2\gamma_{30}$ ,  $P0\gamma_{30}$  vs.  $S1\gamma_{30}$ ,  $S1\gamma_{30}$  vs.  $S2\gamma_{30}$ ) can be found. Additionally, the GO enrichment can be found of those overlapping genes (**Supplementary Figures S7, S9**). Only a small overlap is observed over the three generations for differentially methylated promoter regions (**Supplementary Figure S6** and **Supplementary Tables S6, S7**), except for those in  $P0\gamma_{30}$  vs.  $S2\gamma_{30}$  and  $S1\gamma_{30}$  vs.  $S2\gamma_{30}$ . Here, 19 overlapping genes with hypomethylated DMRs in their promoter regions and 18 with hypermethylated DMRs in their promoter regions are found (**Supplementary Figures S6A,B**). This overlap of genes with hypermethylated DMRs in their promoter regions shows an enrichment for “RNA splicing,” thereby showing that there is an involvement of IR-induced DNA methylation in the regulation of this process (**Supplementary Figure S7**). The hypomethylated ones are enriched for “cell differentiation,” a regular day-to-day process (**Supplementary Figure S7**). The study into any overlap in genes with DMRs in their gene bodies over the three generations in the  $\gamma_{30}$  condition showed a similar result with most of the overlap occurring between  $P0\gamma_{30}$  vs.  $S2\gamma_{30}$  and  $S1\gamma_{30}$  vs.  $S2\gamma_{30}$  (28 hypomethylated and 47 hypermethylated) (**Supplementary Figures S8A,B**). The GO enrichment study for these genes shows an enrichment for “response to osmotic stress” and “DNA repair” (**Supplementary Figure S9**).

## DISCUSSION

It was hypothesised that the exposure to IR would induce DNA methylation changes in plants and that these DNA methylation profiles differ between generations with a different IR exposure history. Based on the UPLC-MS/MS analysis a significantly increased global methylation level is observed mainly in the first generation ( $S1$ ) plants, which were exposed to IR compared to the parent generation but decreased again in the following generation ( $S2$ ) (**Figure 2**). Additionally, the parent generation and second generation showed no significant

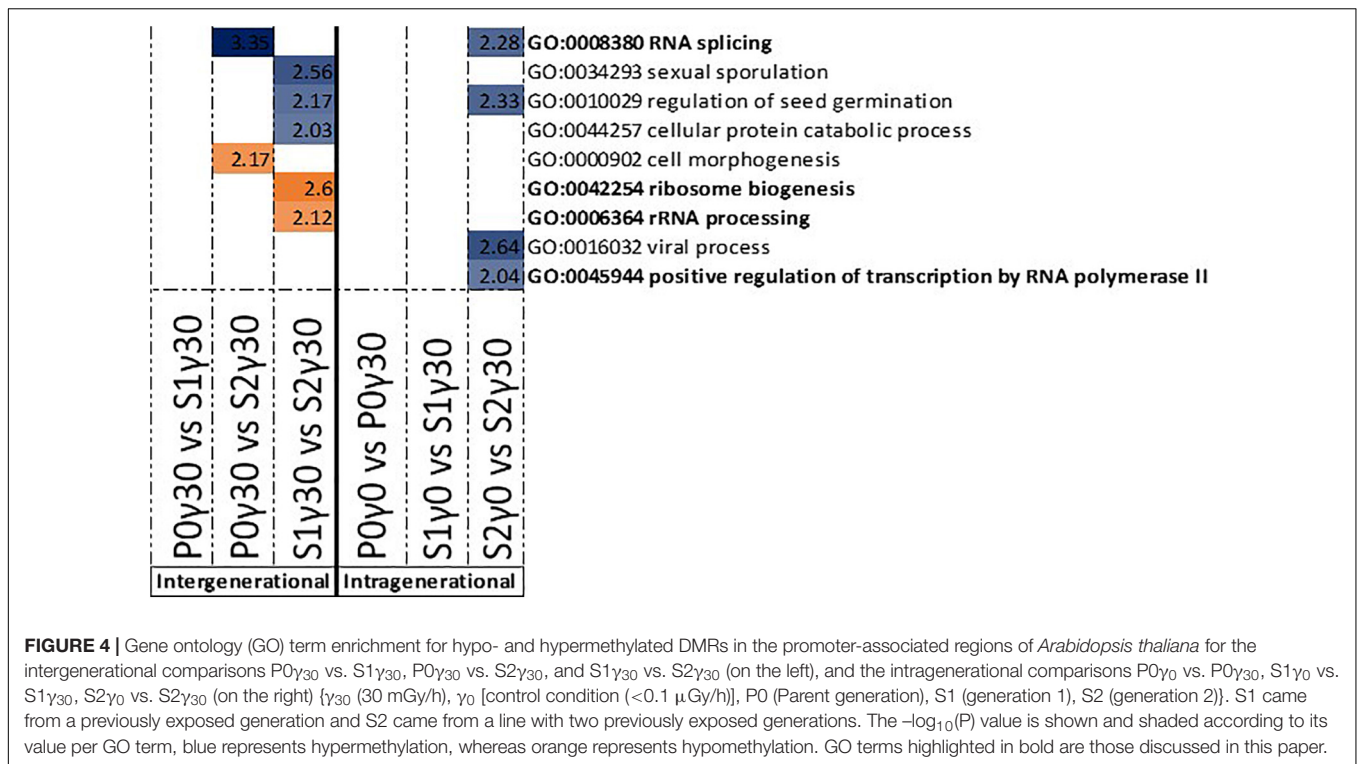




differences compared to each other, hereby indicating that when considering global methylation levels changes in methylation percentage predominantly happen in the exposed first generation (S1). Such a strong response in S1 would fit with findings of a previous study, where oxidative stress and cell wall-related enzyme activity was also increased in the exposed first generation of *A. thaliana* plants (van de Walle et al., 2016). A study done

on *Daphnia magna* exposed to chronic gamma radiation, also showed an increase in the number of DNA methylation changes in the first generations which tapered off in later generations (Trijuau et al., 2018).

By analysing the number of DMRs as identified after WGBS (Tables 1, 2), most DMRs were found in both IR-exposed S1 and S2 and no DMRs were observed in the non-exposed plants



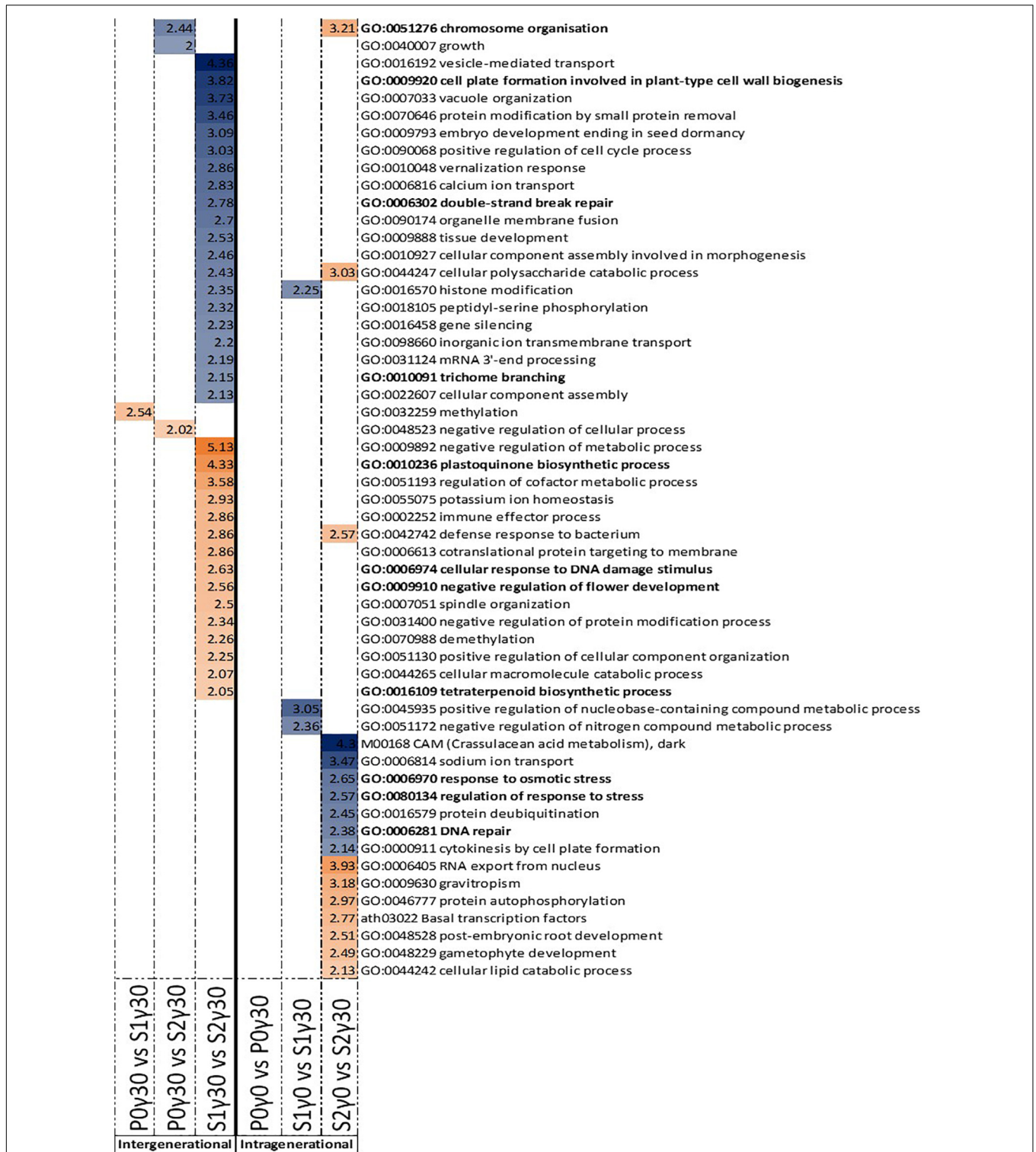
**FIGURE 4 |** Gene ontology (GO) term enrichment for hypo- and hypermethylated DMRs in the promoter-associated regions of *Arabidopsis thaliana* for the intergenerational comparisons P0 $\gamma$ <sub>30</sub> vs. S1 $\gamma$ <sub>30</sub>, P0 $\gamma$ <sub>30</sub> vs. S2 $\gamma$ <sub>30</sub>, and S1 $\gamma$ <sub>30</sub> vs. S2 $\gamma$ <sub>30</sub> (on the left), and the intragenerational comparisons P0 $\gamma$ <sub>0</sub> vs. P0 $\gamma$ <sub>30</sub>, S1 $\gamma$ <sub>0</sub> vs. S1 $\gamma$ <sub>30</sub>, S2 $\gamma$ <sub>0</sub> vs. S2 $\gamma$ <sub>30</sub> (on the right) [ $\gamma$ <sub>30</sub> (30 mGy/h),  $\gamma$ <sub>0</sub> [control condition (<0.1  $\mu$ Gy/h)], P0 (Parent generation), S1 (generation 1), S2 (generation 2)]. S1 came from a previously exposed generation and S2 came from a line with two previously exposed generations. The  $-\log_{10}(P)$  value is shown and shaded according to its value per GO term, blue represents hypermethylation, whereas orange represents hypomethylation. GO terms highlighted in bold are those discussed in this paper.

over the different generations. As no stress-induced responses are expected between control groups, these findings validate the control group. However, also no DMRs are identified in the parent generation after exposure to IR which is comparable to the results on global methylation (UPLC-MS/MS). Taken together both the data of the UPLC-MS/MS and those obtained after WGBS thus indicate that, at least within the current set-up, there is a need for an initial exposure that acts as a form of priming in which a first exposure will only elicit a response in the following generation or exposure. A similar initial priming was observed in previous studies for plants in response toward predators as well as other (a)biotic stresses (van Hulst et al., 2006; Rasmann et al., 2012; Lamke and Baurle, 2017; Thomas and Puthur, 2017; Baurle, 2018). The fact that the second generation (S2) generally shows a markedly higher number of DMRs than the other two generations (Tables 1, 2) after exposure to IR, indicates the presence of a generation-dependent dose-rate effect. This could point towards an ongoing adaptive response, which will likely reach an equilibrium over a number of generations. The strong response found in the WGBS data in S2 is potentially not picked up in the UPLC-MS/MS data which only gives a global DNA methylation percentage in which local hypo- and/or hypermethylation changes will cancel each other out, and therefore are not taken into account.

For the DMRs of the S1 and S2 generation, no clear dose-rate dependent response was found (Tables 1, 2) in contrast the strongest effects were observed in the lower dose rate ( $\gamma$ <sub>30</sub>) compared to the control condition ( $\gamma$ <sub>0</sub>) and very little DMRs were present in the comparisons with  $\gamma$ <sub>110</sub> (Tables 1, 2). Nonetheless, the plants in the  $\gamma$ <sub>110</sub> group did show a normal growth (and

biomass) similar to the other plants, as was also seen under the same conditions and set-up by van de Walle et al. (2016). This lack of DMRs in the highest dose rate ( $\gamma$ <sub>110</sub>) could indicate that a certain threshold is crossed at which the plants switch to a different method of coping with the IR exposure. Kumagai et al. (2000) found some potential indications of the existence of such a threshold when studying seed germination of *A. thaliana* plants irradiated at different dose rates. They saw a gradual decrease in germination rate with increasing dose rate (2–9 kGy), however, at a certain dose rate (10 kGy) the germination rate suddenly dropped to zero. Comparably, IR-exposed *Lemna minor* plants shifted from acclimation to a survival strategy by expressing higher levels of antioxidant defence and DNA repair genes, at the higher dose rates (>232 mGy/h) (Van Hoeck et al., 2017). A transient response has also been observed in response to other stress conditions, such as salinity and UV-B irradiation (Munns and Gilliam, 2015; Mosadegh et al., 2019). Based on the current experimental design it is hypothesised that DNA methylation plays a more prominent role in the regulation of the plant response to lower dose rates than the higher ones. This hypothesis however, needs further testing for more doses and/or time points or confirming it in other plant species.

From the intra- and intergenerational comparison across different gamma exposure conditions, it is clear that most changes occur in the CG methylation context (Tables 1, 2). Only a limited number of CHG DMRs are present and no changes in CHH methylation were observed. The fact that IR seems to only affect CG methylation is an interesting discovery. Research has shown that in plants the environmental stress conditions can affect each methylation context differently



**FIGURE 5 |** Gene ontology (GO) term enrichment for hypo- and hypermethylated DMRs in the gene bodies of *Arabidopsis thaliana* for the intergenerational comparisons P0 $\gamma$ <sub>30</sub> vs. S1 $\gamma$ <sub>30</sub>, P0 $\gamma$ <sub>30</sub> vs. S2 $\gamma$ <sub>30</sub>, and S1 $\gamma$ <sub>30</sub> vs. S2 $\gamma$ <sub>30</sub> (on the left), and the intragenerational comparisons P0 $\gamma$ <sub>0</sub> vs. P0 $\gamma$ <sub>30</sub>, S1 $\gamma$ <sub>0</sub> vs. S1 $\gamma$ <sub>30</sub>, S2 $\gamma$ <sub>0</sub> vs. S2 $\gamma$ <sub>30</sub> (on the right) ( $\gamma$ <sub>30</sub> (30 mGy/h),  $\gamma$ <sub>0</sub> [control condition (<0.1  $\mu$ Gy/h)], P0 (Parent generation), S1 (generation 1), S2 (generation 2)). S1 came from a previously exposed generation and S2 came from a line with two previously exposed generations. The  $-\log_{10}(P)$  value is shown and shaded according to its value per GO term, blue represents hypermethylation, whereas orange represents hypomethylation. GO terms highlighted in bold are those discussed in this paper.

(Niederhuth and Schmitz, 2017; Bartels et al., 2018). A study done on pathogen stress in *A. thaliana*, for instance, showed that upon infection CG and CHG levels were similar to the control group, whereas CHH methylation varied more among the samples, thereby showing CHH methylation to be more responsive to this biotic stress inducing agent (Downen et al., 2012). Other studies showed differential DNA methylation contexts as a result of abiotic stress, e.g., differential DNA methylation in the CHH context as a result of cold stress in *Antirrhinum majus* (Hashida et al., 2006), or drought stress in *Solanum lycopersicum* (González et al., 2011), or in the CHG context as a result of salinity stress in *Mesembryanthemum crystallinum* (Dyachenko et al., 2006). This indicates that more research is needed to clarify the specific role of the cytosine methylation context in the response to stress. However, CG methylation has been shown to be very stable compared to the other methylation contexts and inheritance of CG methylation has been observed to play a key role in transferring epigenetic information to the following generations (Saze et al., 2003; Vaillant and Paszkowski, 2007). Hence, as mainly CG methylation was observed here, a potential inheritable epigenetic IR-stress response is occurring. The exact molecular mechanism behind this preference for CG methylation is yet to be studied, however, the METHYLTRANSFERASE1 (MET1) might play a role in this. MET1 is the CG methylation maintenance methyltransferase in *A. thaliana* and is also involved in *de novo* DNA methylation (Finnegan and Kovac, 2000; Gehring and Henikoff, 2008). The link with IR-stress response has already been made in a previous study where they saw an upregulation of MET1, as well as CMT3 (CHROMOMETHYLASE 3) and SUVH5 [SU(VAR)3-9 HOMOLOG 5] in *A. thaliana* plants exposed to IR (Sidler et al., 2015). In addition, there is a possibility that DNA glycosylase/AP lyase ROS1 plays a role in the active demethylation of different methylation contexts (Kim et al., 2019). However, as ROS1 does not only target CG methylation but also CHG and CHH contexts, be it at lower rates, it cannot be solely responsible for this CG methylation preference (Gong et al., 2002; Agius et al., 2006; Morales-Ruiz et al., 2006; Tang et al., 2016; Kim et al., 2019).

In general more hypermethylated than hypomethylated DMRs were observed in the current study. This corresponds with earlier reports where the offspring of stressed plants showed hypermethylation under salt stress, pathogens, and IR stress (Kovalchuk et al., 2003; Boyko et al., 2007; Bilichak et al., 2012; Volkova et al., 2018) and is consistent with the higher global methylation level as determined by UPLC-MS/MS. Zooming in on specific DNA regions, the ratio of hyper- vs. hypomethylated DMRs can, however, vary. For example, a substantial number of DMRs associated with TEs were found in the intergenerational comparisons after exposure to  $\gamma_{30}$  (30 mGy/h) and in the intragenerational comparison in the second generation (S2) between the control and  $\gamma_{30}$  conditions, with the majority of them being hypermethylated (Table 3). This hypermethylation will likely lead to transcriptional silencing and therefore limiting expression and mobilisation of TEs, resulting in less genomic reshuffling (Sigman and Slotkin, 2016). A hypermethylation in response to IR exposure, has been previously hypothesised to act as a protective measure to increase genome stability

(Kovalchuk et al., 2004; Boyko et al., 2007; Horemans et al., 2018; Volkova et al., 2018).

As the comparisons with the highest dose rate ( $\gamma_{110}$ ) yielded no GO term enrichments and as most significantly affected and stress related GO terms were found for the S2 generation, the focus of the following part of the discussion will lie on the comparison between the control ( $\gamma_0$ ) and  $\gamma_{30}$  conditions and mostly on the second generation and  $\gamma_{30}$  condition, unless stated otherwise. A significant number of enriched GO terms were found that could all be linked to RNA splicing and DNA repair. It is to our knowledge the first time that a DNA methylation driven regulation of both RNA splicing and DNA damage repair mechanisms is reported in plants exposed to IR over multiple generations. Alternative RNA splicing is often used in regulating stress-related genes in order to adjust to the stressor, thereby giving the plant a dynamic tool to respond to changing environmental situations (Staiger, 2015; Calixto et al., 2018; Laloum et al., 2018; Huertas et al., 2019). Combining ribosome biogenesis, rRNA processing (P0 $\gamma_{30}$  vs. S2 $\gamma_{30}$ ), and positive regulation of transcription of RNA polymerase II (S2 $\gamma_0$  vs. S2 $\gamma_{30}$ ) with the RNA splicing (P0 $\gamma_{30}$  vs. S2 $\gamma_{30}$  and S2 $\gamma_0$  vs. S2 $\gamma_{30}$ ), a potential stress (signalling) response is occurring over the three generations as well as intragenerationally between the control and  $\gamma_{30}$  condition. However, exactly how these mechanisms react to IR and if/how the hypo- or hypermethylation of the promoter regions affects them, needs to be studied in more detail.

A DNA repair response is regularly seen in IR-irradiated plants (Esnault et al., 2010; Gicquel et al., 2012; Dona et al., 2013; Georgieva et al., 2017). An enrichment for “DNA repair” was observed in the hypermethylated gene bodies of the second (S2) generation between the control group and the lowest dose rate. Additionally, “chromosome organisation” was found in both S2 $\gamma_0$  vs. S2 $\gamma_{30}$  hypomethylated gene bodies and P0 $\gamma_{30}$  vs. S2 $\gamma_{30}$  hypermethylated gene bodies. The latter process has previously been found to be part of the plant IR-stress response (Shirley et al., 1992; Shikazono et al., 2001), and is involved in chromatin maintenance and modifications as well as DNA repair (Kim, 2019). Further, the hypomethylated gene bodies’ GO term enrichment between the first (S1) and second (S2) generation in the  $\gamma_{30}$  condition which contains the “cellular response to DNA damage stimulus” were found (Figure 5). Taken together these GO enrichments indicate DNA methylation is playing a regulating role in the DNA repair response. A few of the identified genes in our data (or homologues thereof) have been shown to be upregulated by IR in previous studies (e.g., *PARP-1*, *BRCA*) (Garcia et al., 2003; Culligan et al., 2006). In this study, a number of DNA repair and DNA damage response genes were tested (e.g., *PARP1* and *PARP2*, data not shown). However, no direct correlation with DNA methylation levels were seen. Recently it was shown that gene associated DNA methylation resulted in a significantly delayed effect on actual gene expression (Atighi et al., 2020). In the current study we only harvested one sampling point per generation and therefore cannot corroborate this delayed effect on gene expression. Nonetheless, the fact that our data on differential DNA methylation do not directly link up with gene expression data from the harvest time point is in line with Atighi et al. (2020).

In addition to RNA splicing and DNA repair, a number of stress-related processes were found in the GO-enrichment analysis including “cell plate formation in plant-type cell wall biogenesis,” “trichome branching,” “plastoquinone biosynthetic process,” “tetraterpenoid biosynthesis,” and “negative regulation of flower development” (Figure 5). The fact that many DMRs are correlated with different genes and their process, including stress response, indicates that IR-induced DNA methylation is not random and indicates that regulation through changes in DNA methylation plays an important regulating role in the response of plants to IR, either by increasing genetic stability and/or regulating stress response gene expression.

Enrichment of GO-term “trichome branching” after exposure of multiple generations links IR-induced DNA methylation to the induction of trichome branching and is in agreement with a previous study that indicating the association of trichome density with epigenetic inheritance in plants (Scoville et al., 2011). Goh et al. (2014) showed that the number of trichomes increased dramatically in response to 200 Gy applied either chronically (1 week) or acutely (1 h). An enrichment between the S1 and S2 generation in the hypomethylated gene bodies was found for “plastoquinone biosynthetic process” and “tetraterpenoid biosynthesis” (Figure 5). The regulation of plastoquinone biosynthesis might protect plants from IR-damage to the photosynthetic apparatus which has been shown to be affected under IR (Gicquel et al., 2011; Vanhoudt et al., 2014). Induction of antioxidants and secondary metabolites including phenolic compounds, terpenoids and nitrogen-containing compounds have also been reported in this respect (Dixit et al., 2010; Popovic et al., 2013; Taheri et al., 2014; Vardhan and Shukla, 2017; Gudkov et al., 2019). In some organisms, including humans, carotenoids and lycopenes have shown a potential as radioprotectant (Islamian and Mehrali, 2015). The enrichment for terpenoid production can potentially also be linked to the aforementioned increased trichome accumulation as specific glandular trichomes have been shown to accumulate specific terpenoid molecules in response and adaptation to stress (Tang et al., 2020).

Intragenerationally, the “response to osmotic stress” was found in the second (S2) generation between the control and  $\gamma_{30}$  condition (Figure 5). Our findings correspond with the study of Rejili et al. (2008) that showed increased growth of IR-exposed *Medicago sativa* under high salinity. In addition, in *A. thaliana* plants irradiated with a gamma dose of 50 Gy, an improved tolerance to salinity, by regulating, amongst others, stress signal responses was reported (Qi et al., 2014). These studies indicate a form of priming to salinity stress by exposing the plants to IR. The more general “regulation of response to stress” includes a number of these above-mentioned osmotic stress response genes. Additionally, a significant number of the genes is associated with oxidative stress. This corresponds with the literature, in which an upregulation of certain oxidative stress response genes and antioxidant components in plants exposed to IR is observed (Van Hoeck et al., 2015; Einor et al., 2016; Volkova et al., 2017).

Lastly, an enrichment for the “negative regulation of flower development” is observed in the hypomethylated gene bodies between the first (S1) and second (S2) generation (Figure 5).

The flowering response to IR is still under debate as studies have shown either an earlier or a later floral induction (Sax, 1955; Gunckel, 1957; Daly and Thompson, 1975; Kovalchuk et al., 2007; Hwang et al., 2016; Kryvokhyzha et al., 2018). The timing and regulation of flowering is important as it will affect the survivability of the next generation. Earlier flowering leads to quicker seed production and therefore secures the next generation. In some cases, seeds have been shown to be more stress resistant, however, under IR this is still controversial (Maity et al., 2009; Melki and Marouani, 2009; Moussa, 2011; Pozolotina et al., 2012). Alongside, premature flowering can also result in a reduced number and/or mass of the seeds (Huijser and Schmid, 2011). These studies’ findings therefore add to the existing literature on flowering under IR stress and indicate for the first time a potential role of IR-induced DNA methylation in the regulation of this process.

## CONCLUSION

In conclusion, our data are consistent with a potential regulating role for DNA methylation in the response of plants to IR in *Arabidopsis* plants exposed over multiple generations. The observed difference in response between  $\gamma_{30}$  and  $\gamma_{110}$ , however, also indicates that studies on the effects of low dose IR on plants, specifically chronic irradiation within and over generations, are needed for helping in environmental risk assessments. As a follow up we suggest a kinetic study to detect responses shifted in time as well as experiments in which the multigenerational set-up will be combined with a transgenerational one. By including irradiated generations stemming from non-irradiated parent generations and vice versa, the analysis would conclusively separate generational/inherited DNA methylation from IR-induced DNA methylation. Secondly, the molecular mechanism behind the DNA methylation and its preference for CG methylation as a result of IR stress should be studied, for instance, by including gene expression analysis of relevant methyltransferases.

## DATA AVAILABILITY STATEMENT

The raw bisulfite sequencing data and the processed data sets generated in this study have been deposited in the Gene Expression Omnibus (GEO) under accession GSE157965.

## AUTHOR CONTRIBUTIONS

ES, NH, AC, and JV conceptualised and designed the project. JV, MV, and RN performed the practical experimental work. SV and GJ performed the UPLC-MS/MS analysis. FV performed the bisulfite sequencing. MM performed the bioinformatics analysis. PL, ES, NH, and AC contributed to the data interpretation. PL did the data analysis and research on biological relevance, and drafted the manuscript. All authors contributed in the revision.

## FUNDING

The authors would like to thank SCK CEN for the financing of the experiment, the project as well as JV's and PL's PhDs.

## ACKNOWLEDGMENTS

Acknowledgements to the NXTGNT team for the whole genome bisulfite sequencing (WGBS) as well as the subsequent analysis

## REFERENCES

- Agius, F., Kapoor, A., and Zhu, J.-K. (2006). Role of the Arabidopsis DNA glycosylase/lyase ROS1 in active DNA demethylation. *Proc. Natl. Acad. Sci. U.S.A.* 103, 11796–11801. doi: 10.1073/pnas.0603563103
- Atighi, M. R., Verstraeten, B., De Meyer, T., and Kyndt, T. (2020). Genome-wide DNA hypomethylation shapes nematode pattern-triggered immunity in plants. *New Phytol.* 227, 545–558. doi: 10.1111/nph.16532
- Bartels, A., Han, Q., Nair, P., Stacey, L., Gaynier, H., Mosley, M., et al. (2018). Dynamic DNA methylation in plant growth and development. *Int. J. Mol. Sci.* 19:2144.
- Baurle, I. (2018). Can't remember to forget you: chromatin-based priming of somatic stress responses. *Semin. Cell Dev. Biol.* 83, 133–139. doi: 10.1016/j.semcdb.2017.09.032
- Biermans, G., Horemans, N., Vanhoudt, N., Vandenhove, H., Saenen, E., van Hees, M., et al. (2015). *Arabidopsis thaliana* seedlings show an age-dependent response on growth and DNA repair after exposure to chronic  $\gamma$ -radiation. *Environ. Exp. Bot.* 109, 122–130. doi: 10.1016/j.envexpbot.2014.09.001
- Bilichak, A., Ilnytsky, Y., Hollunder, J., and Kovalchuk, I. (2012). The progeny of *Arabidopsis thaliana* plants exposed to salt exhibit changes in DNA methylation, histone modifications and gene expression. *PLoS One* 7:e30515. doi: 10.1371/journal.pone.0030515
- Boyko, A., Kathiria, P., Zemp, F. J., Yao, Y., Pogribny, I., and Kovalchuk, I. (2007). Transgenerational changes in the genome stability and methylation in pathogen-infected plants: (virus-induced plant genome instability). *Nucleic Acids Res.* 35, 1714–1725. doi: 10.1093/nar/gkm029
- Boyko, A., and Kovalchuk, I. (2008). Epigenetic control of plant stress response. *Environ. Mol. Mutagen.* 49, 61–72. doi: 10.1002/em.20347
- Boyko, A., and Kovalchuk, I. (2011). Genome instability and epigenetic modification—heritable responses to environmental stress? *Curr. Opin. Plant Biol.* 14, 260–266. doi: 10.1016/j.pbi.2011.03.003
- Brautigam, K., and Cronk, Q. (2018). DNA methylation and the evolution of developmental complexity in plants. *Front. Plant Sci.* 9:1447. doi: 10.3389/fpls.2018.01447
- Calixto, C. P. G., Guo, W., James, A. B., Tzioutziou, N. A., Entizne, J. C., Panter, P. E., et al. (2018). Rapid and dynamic alternative splicing impacts the arabidopsis cold response transcriptome. *Plant Cell* 30, 1424–1444. doi: 10.1105/tpc.18.00177
- Chinnusamy, V., and Zhu, J. K. (2009). Epigenetic regulation of stress responses in plants. *Curr. Opin. Plant Biol.* 12, 133–139. doi: 10.1016/j.pbi.2008.12.006
- Chinnusamy, V., Zhu, J. K., and Sunkar, R. (2010). Gene regulation during cold stress acclimation in plants. *Methods Mol. Biol.* 639, 39–55. doi: 10.1007/978-1-60761-702-0\_3
- Culligan, K. M., Robertson, C. E., Foreman, J., Doerner, P., and Britt, A. B. (2006). ATR and ATM play both distinct and additive roles in response to ionizing radiation. *Plant J.* 48, 947–961. doi: 10.1111/j.1365-313x.2006.02931.x
- Daly, K., and Thompson, K. (1975). Quantitative dose-response of growth and development in *Arabidopsis thaliana* exposed to chronic gamma-radiation. *Int. J. Radiat. Biol. Relat. Stud. Phys. Chem. Med.* 28, 61–66.
- Danchenko, M., Skultety, L., Rashydov, N. M., Berezna, V. V., Mátel, L., Salaj, T., et al. (2009). Proteomic analysis of mature soybean seeds from the chernobyl

and identification of differentially methylated regions (DMRs) between treatments and controls. We wish to thank Rob Vanhoudt (SCK CEN) for his skilful help in the making of the circular plots in Circos.

## SUPPLEMENTARY MATERIAL

The Supplementary Material for this article can be found online at: <https://www.frontiersin.org/articles/10.3389/fpls.2021.611783/full#supplementary-material>

- area suggests plant adaptation to the contaminated environment. *J. Proteome Res.* 8, 2915–2922. doi: 10.1021/pr900034u
- de Azevedo Neto, A. D., Prisco, J. T., Eneas-Filho, J., Medeiros, J. V., and Gomes-Filho, E. (2005). Hydrogen peroxide pre-treatment induces salt-stress acclimation in maize plants. *J. Plant Physiol.* 162, 1114–1122. doi: 10.1016/j.jplph.2005.01.007
- Dixit, A. K., Bhatnagar, D., Kumar, V., Rani, A., Manjaya, J. G., and Bhatnagar, D. (2010). Gamma irradiation induced enhancement in isoflavones, total phenol, anthocyanin and antioxidant properties of varying seed coat colored soybean. *J. Agric. Food Chem.* 58, 4298–4302. doi: 10.1021/jf904228e
- Dona, M., Ventura, L., Macovei, A., Confalonieri, M., Savio, M., Giovannini, A., et al. (2013). Gamma irradiation with different dose rates induces different DNA damage responses in *Petunia x hybrida* cells. *J. Plant Physiol.* 170, 780–787. doi: 10.1016/j.jplph.2013.01.010
- Downen, R. H., Pelizzola, M., Schmitz, R. J., Lister, R., Downen, J. M., Nery, J. R., et al. (2012). Widespread dynamic DNA methylation in response to biotic stress. *Proc. Natl. Acad. Sci. U.S.A.* 109, E2183–E2191.
- Dyachenko, O. V., Zakharchenko, N. S., Shevchuk, T. V., Bohnert, H. J., Cushman, J. C., and Buryanov, Y. I. (2006). Effect of hypermethylation of CCWGG sequences in DNA of *Mesembryanthemum crystallinum* plants on their adaptation to salt stress. *Biochemistry* 71, 461–465. doi: 10.1134/s000629790604016x
- Einor, D., Bonisoli-Alquati, A., Costantini, D., Mousseau, T. A., and Moller, A. P. (2016). Ionizing radiation, antioxidant response and oxidative damage: a meta-analysis. *Sci. Total Environ.* 548–549, 463–471. doi: 10.1016/j.scitotenv.2016.01.027
- Esnault, M.-A., Legue, F., and Chenal, C. (2010). Ionizing radiation: advances in plant response. *Environ. Exp. Bot.* 68, 231–237. doi: 10.1016/j.envexpbot.2010.01.007
- Espinosa, N. A., Saze, H., and Saijo, Y. (2016). Epigenetic control of defense signaling and priming in plants. *Front. Plant Sci.* 7:1201. doi: 10.3389/fpls.2016.01201
- Finnegan, E. J., and Kovac, K. A. (2000). Plant DNA methyltransferases. *Plant Mol. Biol.* 43, 189–201.
- Garcia, V., Bruchet, H., Camescasse, D., Granier, F., Bouchez, D., and Tissier, A. (2003). AtATM is essential for meiosis and the somatic response to DNA damage in plants. *Plant Cell* 15, 119–132. doi: 10.1105/tpc.006577
- Gehring, M., and Henikoff, S. (2008). DNA methylation and demethylation in Arabidopsis. *Arabidopsis Book* 6:e0102. doi: 10.1199/tab.0102
- Georgieva, M., Rashydov, N. M., and Hajdich, M. (2017). DNA damage, repair monitoring and epigenetic DNA methylation changes in seedlings of Chernobyl soybeans. *DNA Repair* 50, 14–21. doi: 10.1016/j.dnarep.2016.12.002
- Geras'kin, S. A., Kim, J. K., Oudalova, A. A., Vasiliyev, D. V., Dikareva, N. S., Zimin, V. L., et al. (2005). Bio-monitoring the genotoxicity of populations of Scots pine in the vicinity of a radioactive waste storage facility. *Mutat. Res.* 583, 55–66. doi: 10.1016/j.mrgentox.2005.02.003
- Gicquel, M., Esnault, M. A., Jorriin-Novo, J. V., and Cabello-Hurtado, F. (2011). Application of proteomics to the assessment of the response to ionising radiation in *Arabidopsis thaliana*. *J. Proteomics* 74, 1364–1377. doi: 10.1016/j.jprot.2011.03.025

- Gicquel, M., Taconnat, L., Renou, J. P., Esnault, M. A., and Cabello-Hurtado, F. (2012). Kinetic transcriptomic approach revealed metabolic pathways and genotoxic-related changes implied in the Arabidopsis response to ionising radiations. *Plant Sci.* 195, 106–119. doi: 10.1016/j.plantsci.2012.06.015
- Goh, E. J., Kim, J. B., Kim, W. J., Ha, B. K., Kim, S. H., Kang, S. Y., et al. (2014). Physiological changes and anti-oxidative responses of Arabidopsis plants after acute and chronic gamma-irradiation. *Radiat. Environ. Biophys.* 53, 677–693. doi: 10.1007/s00411-014-0562-5
- Gong, Z., Morales-Ruiz, T., Ariza, R. R., Roldan-Arjona, T., David, L., and Zhu, J.-K. (2002). ROS1, a repressor of transcriptional gene silencing in Arabidopsis, encodes a DNA Glycosylase/Lyase. *Cell* 111, 803–814. doi: 10.1016/s0092-8674(02)01133-9
- González, R. M., Ricardi, M. M., and Iusem, N. D. (2011). Atypical epigenetic mark in an atypical location: cytosine methylation at asymmetric (CNN) sites within the body of a non-repetitive tomato gene. *BMC Plant Biol.* 11:94. doi: 10.1186/1471-2229-11-94
- Groot, M. P., Kooke, R., Knobens, N., Vergeer, P., Keurentjes, J. J. B., Ouborg, N. J., et al. (2016). Effects of Multi-generational stress exposure and offspring environment on the expression and persistence of transgenerational effects in *Arabidopsis thaliana*. *PLoS One* 11:e0151566. doi: 10.1371/journal.pone.0151566
- Gudkov, S. V., Grinberg, M. A., Sukhov, V., and Vodeneev, V. (2019). Effect of ionizing radiation on physiological and molecular processes in plants. *J. Environ. Radioact.* 202, 8–24. doi: 10.1016/j.jenvrad.2019.02.001
- Gunckel, J. E. (1957). The effects of ionizing radiation on plants; morphological effects. *Q. Rev. Biol.* 32, 46–56.
- Hashida, S.-N., Uchiyama, T., Martin, C., Kishima, Y., Sano, Y., and Mikami, T. (2006). The temperature-dependent change in methylation of the antirrhinum transposon Tam3 is controlled by the activity of its transposase. *Plant Cell* 18, 104–118. doi: 10.1105/tpc.105.037655
- Hauser, M. T., Aufsatz, W., Jonak, C., and Luschnig, C. (2011). Transgenerational epigenetic inheritance in plants. *Biochim. Biophys. Acta* 1809, 459–468.
- Hideg, E., Jansen, M. A., and Strid, A. (2013). UV-B exposure, ROS, and stress: inseparable companions or loosely linked associates? *Trends Plant Sci.* 18, 107–115. doi: 10.1016/j.tplants.2012.09.003
- Horemans, N., Nauts, R., Vives, I. B. J., Van Hees, M., Jacobs, G., Voorspoels, S., et al. (2018). Genome-wide DNA methylation changes in two *Brassicaceae* species sampled alongside a radiation gradient in Chernobyl and Fukushima. *J. Environ. Radioact.* 192, 405–416. doi: 10.1016/j.jenvrad.2018.07.012
- Horemans, N., Spurgeon, D. J., Lecomte-Pradines, C., Saenen, E., Bradshaw, C., Oughton, D., et al. (2019). Current evidence for a role of epigenetic mechanisms in response to ionizing radiation in an ecotoxicological context. *Environ. Pollut.* 251, 469–483. doi: 10.1016/j.envpol.2019.04.125
- Huertas, R., Catala, R., Jimenez-Gomez, J. M., Castellano, M. M., Crevillén, P., Piñeiro, M., et al. (2019). Arabidopsis SME1 regulates plant development and response to abiotic stress by determining spliceosome activity specificity. *Plant Cell* 31, 537–554. doi: 10.1105/tpc.18.00689
- Huijser, P., and Schmid, M. (2011). The control of developmental phase transitions in plants. *Development* 138, 4117–4129. doi: 10.1242/dev.063511
- Hwang, S. G., Kim, D. S., Kim, J. B., Hwang, J. E., Park, H. M., Kim, J. H., et al. (2016). Transcriptome analysis of reproductive-stage Arabidopsis plants exposed gamma-ray irradiation at various doses. *Int. J. Radiat. Biol.* 92, 451–465. doi: 10.1080/09553002.2016.1178865
- Ikeda, Y., and Nishimura, T. (2015). “The role of DNA methylation in transposable element silencing and genomic imprinting,” in *Nuclear Functions in Plant Transcription, Signaling and Development*, eds O. Pontes and H. Jin (New York, NY: Springer), 13–29. doi: 10.1007/978-1-4939-2386-1\_2
- Islamian, J. P., and Mehrali, H. (2015). Lycopene as A carotenoid provides radioprotectant and antioxidant effects by quenching radiation-induced free radical singlet oxygen: an overview. *Cell* 16, 386–391.
- Kim, J. H. (2019). Chromatin remodeling and epigenetic regulation in plant DNA damage repair. *Int. J. Mol. Sci.* 20:4093. doi: 10.3390/ijms20174093
- Kim, J. S., Lim, J. Y., Shin, H., Kim, B. G., Yoo, S. D., Kim, W. T., et al. (2019). ROS1-Dependent DNA demethylation is required for ABA-inducible NIC3 expression. *Plant Physiol.* 179, 1810–1821. doi: 10.1104/pp.18.01471
- Kinoshita, T., and Seki, M. (2014). Epigenetic memory for stress response and adaptation in plants. *Plant Cell Physiol.* 55, 1859–1863. doi: 10.1093/pcp/pcu125
- Klublicova, K., Danchenko, M., Skultety, L., Berezna, V. V., Uvackova, L., Rashedov, N. M., et al. (2012). Soybeans grown in the Chernobyl area produce fertile seeds that have increased heavy metal resistance and modified carbon metabolism. *PLoS One* 7:e48169. doi: 10.1371/journal.pone.0048169
- Kovalchuk, I., Abramov, V., Pogribny, I., and Kovalchuk, O. (2004). Molecular aspects of plant adaptation to life in the Chernobyl zone. *Plant Physiol.* 135, 357–363. doi: 10.1104/pp.104.040477
- Kovalchuk, I., Molinier, J., Yao, Y., Arkhipov, A., and Kovalchuk, O. (2007). Transcriptome analysis reveals fundamental differences in plant response to acute and chronic exposure to ionizing radiation. *Mutat. Res.* 624, 101–113. doi: 10.1016/j.mrfmmm.2007.04.009
- Kovalchuk, O., Burke, P., Arkhipov, A., Kuchma, N., James, S. J., Kovalchuk, I., et al. (2003). Genome hypermethylation in *Pinus silvestris* of Chernobyl—a mechanism for radiation adaptation? *Mutat. Res.* 529, 13–20. doi: 10.1016/s0027-5107(03)00103-9
- Kryvokhyzha, M. V., Krutovsky, K. V., and Rashedov, N. M. (2018). Differential expression of flowering genes in *Arabidopsis thaliana* under chronic and acute ionizing radiation. *Int. J. Radiat. Biol.* 95, 626–634. doi: 10.1080/09553002.2019.1562251
- Kumagai, J., Katoh, H., Kumada, T., Tanaka, A., Tano, S., and Miyazaki, T. (2000). Strong resistance of *Arabidopsis thaliana* and *Raphanus sativus* seeds for ionizing radiation as studied by ESR, ENDOR, ESE spectroscopy and germination measurement: effect of long-lived and super-long-lived radicals. *Radiat. Phys. Chem.* 57, 75–83. doi: 10.1016/s0969-806x(99)00306-0
- Laloum, T., Martin, G., and Duque, P. (2018). Alternative splicing control of abiotic stress responses. *Trends Plant Sci.* 23, 140–150. doi: 10.1016/j.tplants.2017.09.019
- Lamke, J., and Baurle, I. (2017). Epigenetic and chromatin-based mechanisms in environmental stress adaptation and stress memory in plants. *Genome Biol.* 18:124.
- Maity, J. P., Kar, S., Banerjee, S., Chakraborty, A., and Santra, S. C. (2009). Effects of gamma irradiation on long-storage seeds of *Oryza sativa* (cv. 2233) and their surface infecting fungal diversity. *Radiat. Phys. Chem.* 78, 1006–1010. doi: 10.1016/j.radphyschem.2009.06.002
- Melki, M., and Marouani, A. (2009). Effects of gamma rays irradiation on seed germination and growth of hard wheat. *Environ. Chem. Lett.* 8, 307–310. doi: 10.1007/s10311-009-0222-1
- Mirouze, M., and Paszkowski, J. (2011). Epigenetic contribution to stress adaptation in plants. *Curr. Opin. Plant Biol.* 14, 267–274. doi: 10.1016/j.pbi.2011.03.004
- Moller, A. P., and Mousseau, T. A. (2016). Are organisms adapting to ionizing radiation at chernobyl? *Trends Ecol. Evol.* 31, 281–289. doi: 10.1016/j.tree.2016.01.005
- Morales-Ruiz, T., Ortega-Galisteo, A. P., Ponferrada-Marin, M. I., Martínez-Macias, M. I., Ariza, R. R., and Roldan-Arjona, T. (2006). DEMETER and REPRESSOR OF SILENCING 1 encode 5-methylcytosine DNA glycosylases. *Proc. Natl. Acad. Sci. U.S.A.* 103, 6853–6858. doi: 10.1073/pnas.0601109103
- Mosadegh, H., Trivellini, A., Lucchesini, M., Ferrante, A., Maggini, R., Vernieri, P., et al. (2019). UV-B physiological changes under conditions of distress and eustress in sweet basil. *Plants* 8:396. doi: 10.3390/plants8100396
- Moussa, H. (2011). Low dose of gamma irradiation enhanced drought tolerance in soybean. *Acta Agron. Hung.* 59, 1–12. doi: 10.1556/aagr.59.2011.1.1
- Munns, R., and Gilliam, M. (2015). Salinity tolerance of crops - what is the cost? *New Phytol.* 208, 668–673. doi: 10.1111/nph.13519
- Muñoz-López, M., and García-Pérez, J. L. (2010). DNA transposons: nature and applications in genomics. *Curr. Genomics* 11, 115–128. doi: 10.2174/138920210790886871
- Negin, B., and Moshelion, M. (2020). Remember where you came from: ABA insensitivity is epigenetically inherited in mesophyll, but not seeds. *Plant Sci* 295:110455. doi: 10.1016/j.plantsci.2020.110455
- Niederhuth, C. E., Bewick, A. J., Ji, L., Alabady, M. S., Kim, K. D., Li, Q., et al. (2016). Widespread natural variation of DNA methylation within angiosperms. *Genome Biol.* 17:194.

- Niederhuth, C. E., and Schmitz, R. J. (2017). Putting DNA methylation in context: from genomes to gene expression in plants. *Biochim. Biophys. Acta Gene Regul. Mech.* 1860, 149–156. doi: 10.1016/j.bbagr.2016.08.009
- Pecinka, A., Rosa, M., Schikora, A., Berlinger, M., Hirt, H., Luschnig, C., et al. (2009). Transgenerational stress memory is not a general response in *Arabidopsis*. *PLoS One* 4:e5202. doi: 10.1371/journal.pone.0005202
- Popovic, B. M., Stajner, D., Mandic, A., Canadanovic-Brunet, J., and Kevresan, S. (2013). Enhancement of antioxidant and isoflavones concentration in gamma irradiated soybean. *ScientificWorldJournal* 2013:383574.
- Pozolotina, V. N., Antonova, E. V., and Bezel, V. S. (2012). Comparison of remote consequences in *Taraxacum officinale* seed progeny collected in radioactively or chemically contaminated areas. *Ecotoxicology* 21, 1979–1988. doi: 10.1007/s10646-012-0932-1
- Qi, W., Zhang, L., Xu, H., Wang, L., and Jiao, Z. (2014). Physiological and molecular characterization of the enhanced salt tolerance induced by low-dose gamma irradiation in *Arabidopsis* seedlings. *Biochem. Biophys. Res. Commun.* 450, 1010–1015. doi: 10.1016/j.bbrc.2014.06.086
- Rabinowicz, P. D., Palmer, L. E., May, B. P., Hemann, M. T., Lowe, S. W., McCombie, W. R., et al. (2003). Genes and transposons are differentially methylated in plants, but not in mammals. *Genome Res.* 13, 2658–2664. doi: 10.1101/gr.1784803
- Rashydov, N. M., and Hajduch, M. (2015). Chernobyl seed project. Advances in the identification of differentially abundant proteins in a radio-contaminated environment. *Front. Plant Sci.* 6:493. doi: 10.3389/fpls.2015.00493
- Rasmann, S., De Vos, M., Casteel, C. L., Tian, D., Halitschke, R., Sun, J. Y., et al. (2012). Herbivory in the previous generation primes plants for enhanced insect resistance. *Plant Physiol.* 158, 854–863. doi: 10.1104/pp.111.187831
- Rejili, M., Telahigue, D., Lachiheb, B., Mrabet, A., and Ferchichi, A. (2008). Impact of gamma radiation and salinity on growth and K<sup>+</sup>/Na<sup>+</sup> balance in two populations of *Medicago sativa* (L.) cultivar Gabès. *Prog. Nat. Sci.* 18, 1095–1105. doi: 10.1016/j.pnsc.2008.04.004
- Sahu, P. P., Pandey, G., Sharma, N., Puranik, S., Muthamilarasan, M., and Prasad, M. (2013). Epigenetic mechanisms of plant stress responses and adaptation. *Plant Cell Rep.* 32, 1151–1159. doi: 10.1007/s00299-013-1462-x
- Sax, K. (1955). The effect of ionizing radiation on plant growth. *Am. J. Bot.* 42, 360–364. doi: 10.1002/1.1537-2197.1955.tb11132.x
- Saze, H., Mittelsten Scheid, O., and Paszkowski, J. (2003). Maintenance of CpG methylation is essential for epigenetic inheritance during plant gametogenesis. *Nat. Genet.* 34, 65–69. doi: 10.1038/ng1138
- Schmid, M. W., Heichinger, C., Coman Schmid, D., Guthörl, D., Gagliardini, V., Bruggmann, R., et al. (2018). Contribution of epigenetic variation to adaptation in *Arabidopsis*. *Nat. Commun.* 9:4446.
- Schultz, M. D., Schmitz, R. J., and Ecker, J. R. (2012). 'Leveling' the playing field for analyses of single-base resolution DNA methylomes. *Trends Genet.* 28, 583–585. doi: 10.1016/j.tig.2012.10.012
- Scoville, A. G., Barnett, L. L., Bodbyl-Roels, S., Kelly, J. K., and Hileman, L. C. (2011). Differential regulation of a MYB transcription factor is correlated with transgenerational epigenetic inheritance of trichome density in *Mimulus guttatus*. *New Phytol.* 191, 251–263. doi: 10.1111/j.1469-8137.2011.03656.x
- Shikazono, N., Tanaka, A., and Watanabe, H. S. T. (2001). Rearrangements of the DNA in carbon ion-induced mutants of *Arabidopsis thaliana*. *Genetics* 157, 379–387.
- Shirley, B. W., Hanley, S., and Goodman, H. M. (1992). Effects of ionizing radiation on a plant genome: analysis of two *Arabidopsis* transparent testa mutations. *Plant Cell* 4, 333–347. doi: 10.2307/3869544
- Sidler, C., Li, D., Kovalchuk, O., and Kovalchuk, I. (2015). Development-dependent expression of DNA repair genes and epigenetic regulators in *Arabidopsis* plants exposed to ionizing radiation. *Radiat. Res.* 183, 219–232. doi: 10.1667/rr13840.1
- Sigman, M. J., and Slotkin, R. K. (2016). The first rule of plant transposable element silencing: location, location, location. *Plant Cell* 28, 304–313. doi: 10.1105/tpc.15.00869
- Staiger, D. (2015). Shaping the *Arabidopsis* transcriptome through alternative splicing. *Adv. Bot.* 2015:419428.
- Suter, L., and Widmer, A. (2013). Phenotypic effects of salt and heat stress over three generations in *Arabidopsis thaliana*. *PLoS One* 8:e80819. doi: 10.1371/journal.pone.0080819
- Taheri, S., Abdullah, T. L., Karimi, E., Oskoueian, E., and Ebrahimi, M. (2014). Antioxidant capacities and total phenolic contents enhancement with acute gamma irradiation in *Curcuma alismatifolia* (Zingiberaceae) leaves. *Int. J. Mol. Sci.* 15, 13077–13090. doi: 10.3390/ijms150713077
- Tang, K., Lang, Z., Zhang, H., and Zhu, J. K. (2016). The DNA demethylase ROS1 targets genomic regions with distinct chromatin modifications. *Nat. Plants* 2:16169.
- Tang, T., Li, C. H., Li, D. S., Jing, S. X., Hua, J., Luo, S. H., et al. (2020). Peltate glandular trichomes of *Colquhounia vestita* harbor diterpenoid acids that contribute to plant adaptation to UV radiation and cold stresses. *Phytochemistry* 172:112285. doi: 10.1016/j.phytochem.2020.112285
- Thomas, D. T. T., and Puthur, J. T. (2017). UV radiation priming: a means of amplifying the inherent potential for abiotic stress tolerance in crop plants. *Environ. Exp. Bot.* 138, 57–66. doi: 10.1016/j.envexpbot.2017.03.003
- Trijau, M., Asselman, J., Armant, O., Adam-Guillermin, C., De Schampelaere, K. A. C., and Alonzo, F. (2018). Transgenerational DNA methylation changes in daphnia magna exposed to chronic gamma irradiation. *Environ. Sci. Technol.* 52, 4331–4339. doi: 10.1021/acs.est.7b05695
- Turgut-Kara, N., Arikan, B., and Celik, H. (2020). Epigenetic memory and priming in plants. *Genetica* 148, 47–54. doi: 10.1007/s10709-020-00093-4
- Vaillant, I., and Paszkowski, J. (2007). Role of histone and DNA methylation in gene regulation. *Curr. Opin. Plant Biol.* 10, 528–533. doi: 10.1016/j.pbi.2007.06.008
- van de Walle, J., Horemans, N., Saenen, E., Van Hees, M., Wannijn, J., Nauts, R., et al. (2016). *Arabidopsis* plants exposed to gamma radiation in two successive generations show a different oxidative stress response. *J. Environ. Radioact.* 165, 270–279. doi: 10.1016/j.jenvrad.2016.10.014
- Van Hoeck, A., Horemans, N., Nauts, R., Van Hees, M., Vandenhove, H., and Blust, R. (2017). Lemna minor plants chronically exposed to ionising radiation: RNA-seq analysis indicates a dose rate dependent shift from acclimation to survival strategies. *Plant Sci.* 257, 84–95. doi: 10.1016/j.plantsci.2017.01.010
- Van Hoeck, A., Horemans, N., Van Hees, M., Nauts, R., Knapen, D., Vandenhove, H., et al. (2015). Characterizing dose response relationships: chronic gamma radiation in Lemna minor induces oxidative stress and altered polyploidy level. *J. Environ. Radioact.* 150, 195–202. doi: 10.1016/j.jenvrad.2015.08.017
- van Hulten, M., Pelsler, M., Van Loon, L. C., Pieterse, C. M., and Ton, J. (2006). Costs and benefits of priming for defense in *Arabidopsis*. *Proc. Natl. Acad. Sci. U.S.A.* 103, 5602–5607. doi: 10.1073/pnas.0510213103
- Vanhoudt, N., Horemans, N., Wannijn, J., Nauts, R., Van Hees, M., and Vandenhove, H. (2014). Primary stress responses in *Arabidopsis thaliana* exposed to gamma radiation. *J. Environ. Radioact.* 129, 1–6. doi: 10.1016/j.jenvrad.2013.11.011
- Vanhoudt, N., Vandenhove, H., Horemans, N., Wannijn, J., Van Hees, M., Vangronsveld, J., et al. (2010). The combined effect of uranium and gamma radiation on biological responses and oxidative stress induced in *Arabidopsis thaliana*. *J. Environ. Radioact.* 101, 923–930. doi: 10.1016/j.jenvrad.2010.06.008
- Vardhan, P. V., and Shukla, L. I. (2017). Gamma irradiation of medicinally important plants and the enhancement of secondary metabolite production. *Int. J. Radiat. Biol.* 93, 967–979. doi: 10.1080/09553002.2017.1344788
- Verhoeven, K. J., Jansen, J. J., Van Dijk, P. J., and Biere, A. (2010). Stress-induced DNA methylation changes and their heritability in asexual dandelions. *New Phytol.* 185, 1108–1118. doi: 10.1111/j.1469-8137.2009.03121.x
- Verhoeven, K. J., and van Gorp, T. P. (2012). Transgenerational effects of stress exposure on offspring phenotypes in apomictic dandelion. *PLoS One* 7:e38605. doi: 10.1371/journal.pone.0038605
- Volkova, P. Y., Geras'kin, S. A., Horemans, N., Makarenko, E. S., Saenen, E., Duarte, G. T., et al. (2018). Chronic radiation exposure as an ecological factor: hypermethylation and genetic differentiation in irradiated Scots pine populations. *Environ. Pollut.* 232, 105–112. doi: 10.1016/j.envpol.2017.08.123
- Volkova, P. Y., Geras'kin, S. A., and Kazakova, E. A. (2017). Radiation exposure in the remote period after the Chernobyl accident caused oxidative stress and genetic effects in Scots pine populations. *Sci. Rep.* 7:43009.
- Wang, Z., Schwacke, R., and Kunze, R. (2016). DNA damage-induced transcription of transposable elements and long non-coding RNAs in *Arabidopsis* is rare and ATM-dependent. *Mol. Plant* 9, 1142–1155. doi: 10.1016/j.molp.2016.04.015
- West, C. E., Waterworth, W. M., Jiang, Q., and Bray, C. M. (2000). *Arabidopsis* DNA ligase IV is induced by g-irradiation and interacts with an *Arabidopsis* homologue of the double strand break repair protein XRCC4. *Plant J.* 24, 61–68.



- Zaka, R. (2002). Effects of low chronic doses of ionizing radiation on antioxidant enzymes and G6PDH activities in *Stipa capillata* (Poaceae). *J. Exp. Bot.* 53, 1979–1987. doi: 10.1093/jxb/erf041
- Zhou, M., Sng, N. J., Lefrois, C. E., Paul, A. L., and Ferl, R. J. (2019). Epigenomics in an extraterrestrial environment: organ-specific alteration of DNA methylation and gene expression elicited by spaceflight in *Arabidopsis thaliana*. *BMC Genomics* 20:205. doi: 10.1186/s12864-019-5554-z
- Zhou, Y., Zhou, B., Pache, L., Chang, M., Khodabakhshi, A. H., Tanaseichuk, O., et al. (2019). Metascape provides a biologist-oriented resource for the analysis of systems-level datasets. *Nat. Commun.* 10:1523.

**Conflict of Interest:** The authors declare that the research was conducted in the absence of any commercial or financial relationships that could be construed as a potential conflict of interest.

Copyright © 2021 Laanen, Saenen, Mysara, Van de Walle, Van Hees, Nauts, Van Nieuwerburgh, Voorspoels, Jacobs, Cuypers and Horemans. This is an open-access article distributed under the terms of the Creative Commons Attribution License (CC BY). The use, distribution or reproduction in other forums is permitted, provided the original author(s) and the copyright owner(s) are credited and that the original publication in this journal is cited, in accordance with accepted academic practice. No use, distribution or reproduction is permitted which does not comply with these terms.