



Infections at the nexus of metabolic-associated fatty liver disease

Joost Boeckmans^{1,2} · Matthias Rombaut¹ · Thomas Demuyser^{3,4} · Baptist Declerck³ · Denis Piérard³ · Vera Rogiers¹ · Joery De Kock¹ · Luc Waumans² · Koen Magerman^{2,5} · Reinoud Cartuyvels² · Jean-Luc Rummens² · Robim M. Rodrigues¹ · Tamara Vanhaecke¹

Received: 1 December 2020 / Accepted: 29 April 2021 / Published online: 24 May 2021
© The Author(s), under exclusive licence to Springer-Verlag GmbH Germany, part of Springer Nature 2021

Abstract

Metabolic-associated fatty liver disease (MAFLD) is a chronic liver disease that affects about a quarter of the world population. MAFLD encompasses different disease stadia ranging from isolated liver steatosis to non-alcoholic steatohepatitis (NASH), fibrosis, cirrhosis and hepatocellular carcinoma. Although MAFLD is considered as the hepatic manifestation of the metabolic syndrome, multiple concomitant disease-potentiating factors can accelerate disease progression. Among these risk factors are diet, lifestyle, genetic traits, intake of steatogenic drugs, male gender and particular infections. Although infections often outweigh the development of fatty liver disease, pre-existing MAFLD could be triggered to progress towards more severe disease stadia. These combined disease cases might be underreported because of the high prevalence of both MAFLD and infectious diseases that can promote or exacerbate fatty liver disease development. In this review, we portray the molecular and cellular mechanisms by which the most relevant viral, bacterial and parasitic infections influence the progression of fatty liver disease and steatohepatitis. We focus in particular on how infectious diseases, including coronavirus disease-19, hepatitis C, acquired immunodeficiency syndrome, peptic ulcer and periodontitis, exacerbate MAFLD. We specifically underscore the synergistic effects of these infections with other MAFLD-promoting factors.

Keywords Metabolic-associated fatty liver disease (MAFLD) · Non-alcoholic steatohepatitis (NASH) · Infectious diseases · Lipid metabolism · Liver · SARS-CoV-2 · Human immunodeficiency virus · Hepatitis C · *Helicobacter pylori* · *Klebsiella pneumoniae*

Robim M. Rodrigues and Tamara Vanhaecke contributed equally to this work.

✉ Joost Boeckmans
Joost.Boeckmans@vub.be

✉ Robim M. Rodrigues
Robim.Marcelino.Rodrigues@vub.be

¹ Department of In Vitro Toxicology and Dermato-Cosmetology, Faculty of Medicine and Pharmacy, Vrije Universiteit Brussel, Laarbeeklaan 103, 1090 Brussels, Belgium

² Clinical Laboratory, Jessa Hospital, Stadsomvaart 11, 3500 Hasselt, Belgium

³ Department of Microbiology, Universitair Ziekenhuis Brussel, Laarbeeklaan 101, 1090 Brussels, Belgium

⁴ Center for Neurosciences, Faculty of Medicine and Pharmacy, Vrije Universiteit Brussel, Laarbeeklaan 103, 1090 Brussels, Belgium

⁵ Department of Immunology and Infection, Hasselt University, Martelarenlaan 42, 3500 Hasselt, Belgium

Introduction

Metabolic-associated fatty liver disease (MAFLD) is a chronic liver disease that affects about 25% of the global population (Younossi et al. 2019; Ryaboshapkina and Hammar 2017). MAFLD comprises an umbrella of disease stadia ranging from liver steatosis to more severe non-alcoholic steatohepatitis (NASH), fibrosis, cirrhosis and hepatocellular carcinoma. Most MAFLD patients suffer from the metabolic syndrome in which obesity is one of the most important risk factors along with insulin resistance and type 2 diabetes. The development of steatosis and progression to more severe disease stadia are, however, multifactorial. A considerable number of patients is lean and certain genetic polymorphisms have been associated with a higher risk for MAFLD development and progression in the past decade (Younossi et al. 2018; Boeckmans et al. 2020a). In recent years, much attention has been paid to the involvement of the gut–liver axis in the NASH

pathogenesis. NASH patients often exhibit dysbiosis and increased intestinal barrier permeability (Marra and Svegliati-baroni 2017). This can lead to translocation to the liver of pathogen-associated molecular patterns (PAMPs), of which lipopolysaccharide (LPS) is the best documented one, and contribute to NASH development and progression (Ganz and Szabo 2013). In addition, higher rates of ethanol-producing bacteria have been observed in the gut microbiome of NASH patients, suggesting that ethanol possibly also fulfills a role in the pathogenesis of NASH (Abu-Shanab and Quigley 2010). Apart from bacterial alterations in gut microbiota of MAFLD patients, also changes in fecal viromes have been recently found to relate with MAFLD severity (Lang et al. 2020). Notably, several infectious diseases can also lead directly or indirectly to lipid accumulation and inflammation in the liver. Therefore, we hypothesize that these pathological conditions aggravate MAFLD and hence synergistically worsen liver disease.

The infectious agents, for which an association with hepatic steatosis is best known, are *Helicobacter pylori* (*H. pylori*) (Tang and Kumar 2017), hepatitis C virus (HCV) and human immunodeficiency virus (HIV) (Cheung and Sanyal 2008; van Welzen et al. 2019). Yet, also other often less suspected infections may contribute to the progression or exacerbation of MAFLD. For example, the recent outbreak of the severe acute respiratory syndrome coronavirus 2 (SARS-CoV-2) that leads to coronavirus disease-19 (COVID-19), attracted much attention. Similar to the earlier reported SARS-CoV infections, admitted COVID-19 patients showed disturbed liver laboratory parameters (Zhang et al. 2020; Cui et al. 2004). Moreover, it has been observed that MAFLD patients are more prone to develop severe COVID-19 and have a longer viral shedding time (Ji et al. 2020).

A direct link between a pathogen and MAFLD is seldomly evident, which highlights the need for increased awareness for these patients. A fatty liver is associated with recurrent bacterial infections independent of metabolic syndrome (Nseir et al. 2011), which makes this patient group especially at risk for shared and superimposed pathogenic mechanisms that can lead to fatty liver disease progression. This also applies to patients suffering from diabetes, in particular to those having type 1 diabetes (Carey et al. 2018). Nonetheless, pathogen-induced fatty liver can in certain cases be considered as a distinct entity, which is substantiated by the fact that hepatitis C-induced steatosis disappears after successful antiviral treatment, while the ‘metabolic fat’ remains present (Asselah et al. 2006).

Here, we review the most relevant viral, bacterial and parasitic infectious diseases that are known to intertwine in the MAFLD pathogenesis or are suspected to do so. We

specifically allude to alternative molecular mechanisms related to infectious agents that might play a role in MAFLD development and progression.

Viruses

Since decades, several viral infectious diseases are known to induce fatty liver disease-related features, including hepatitis C and acquired immunodeficiency syndrome (AIDS) (Sheikh et al. 2008; van Welzen et al. 2019). Notably, links between infectious agents and MAFLD have been also reported regarding infections caused by coronaviruses, yellow fever virus, dengue virus and the hepatitis E virus (Boeckmans et al. 2020b; Simões Quaresma et al. 2005; Kularatne et al. 2014; Lenggenhager et al. 2020). Although much less evidence is present for the latter to effectively promote or exacerbate MAFLD, specific connections between both pathologies can be made.

Coronaviruses

Coronaviruses have caused several epidemics in the past 20 years. SARS-CoV and SARS-CoV-2 infect humans using angiotensin converting enzyme 2 (ACE2) for cellular entry while the Middle East respiratory syndrome coronavirus (MERS-CoV) uses dipeptidyl peptidase 4 (DPP4) as a receptor for cellular entry (Kuba et al. 2005; Hoffmann et al. 2020). There is no conclusive evidence that ACE2 is expressed in hepatocytes which potentially could be at the basis of viral replication of SARS-CoV and SARS-CoV-2 (Hamming et al. 2004; De Smet et al. 2020). Nonetheless, based on single-cell RNA sequencing, it was found that ACE2 is expressed in cholangiocytes (Pawlotsky 2020). DPP4, on the other hand, is expressed by hepatocytes (Baumeier et al. 2017) and patients infected with MERS-CoV exhibit moderate liver steatosis, scattered calcifications and mild portal tract and lobular lymphocytic inflammation (Ng et al. 2020). MERS-CoV can induce interleukin 1 receptor associated kinase 3 (IRAK-M), peroxisome proliferator-activated receptor (PPAR)- γ and interleukin (IL)-10 in macrophages, and therefore, lead to undesired immunosuppression. DPP4 inhibitors such as sitagliptin are indicated for the treatment of insulin resistance and type 2 diabetes. Although clinical evidence is lacking, diabetes patients that take DPP4 inhibitors could be relatively protected against MERS-CoV infection (Al-Qahtani et al. 2017). On the other hand, intake of blood pressure-reducing ACE inhibitors and angiotensin II type-I receptor blockers can increase the expression of ACE2 which might lead to a

higher susceptibility for developing COVID-19 (Boeckmans et al. 2020b; Fang et al. 2020).

MAFLD and COVID-19 are interrelated

Considering that MAFLD patients often suffer from hypertension, insulin resistance and type 2 diabetes, their specific position during the SARS epidemics was and is largely unknown. Furthermore, COVID-19 patients show a higher occurrence of hepatic steatosis measured by thorax CT (Kreling et al. 2020) and SARS-CoV and SARS-CoV-2 infections are often accompanied by abnormal levels of aspartate aminotransferase (AST) and alanine aminotransferase (ALT) serum levels which suggest liver damage (Zhang et al. 2020; Cui et al. 2004). In addition, suffering from MAFLD increases the risk for developing severe COVID-19 in both diabetic and non-diabetic patients (Gao et al. 2020; Dongiovanni et al. 2020; Pan et al. 2020).

Possible explanations for MAFLD progression during COVID-19

One possible explanation for MAFLD progression in COVID-19 patients is that ACE2 is highly expressed on enterocytes in the small intestine (Fig. 1). This might lead to increased gut permeability and translocation of PAMPs to the liver (Assante et al. 2020). Hereby, the liver could get primed for the cytokine storm, which is a systemic hyperinflammatory reaction in response to SARS-CoV and MERS-CoV infections, including the release of tumor necrosis factor (TNF)- α , IL-1 β , IL-2, IL-6, interferon (IFN)- α , IFN- β , IFN- γ , and C-C chemokine ligand (CCL)2 (Yi et al. 2020), that could consequently exacerbate liver inflammation and promote MAFLD progression (Assante et al. 2020). In addition, COVID-19 patients needing intensive care exhibited higher plasma levels of IL-2, IL-7, IL-10, colony-stimulating factor 2 (CSF2), CXCL10, CCL2, CCL3, and TNF- α compared to patients that were not admitted to the intensive care unit (Huang et al. 2020). CCL2 is an

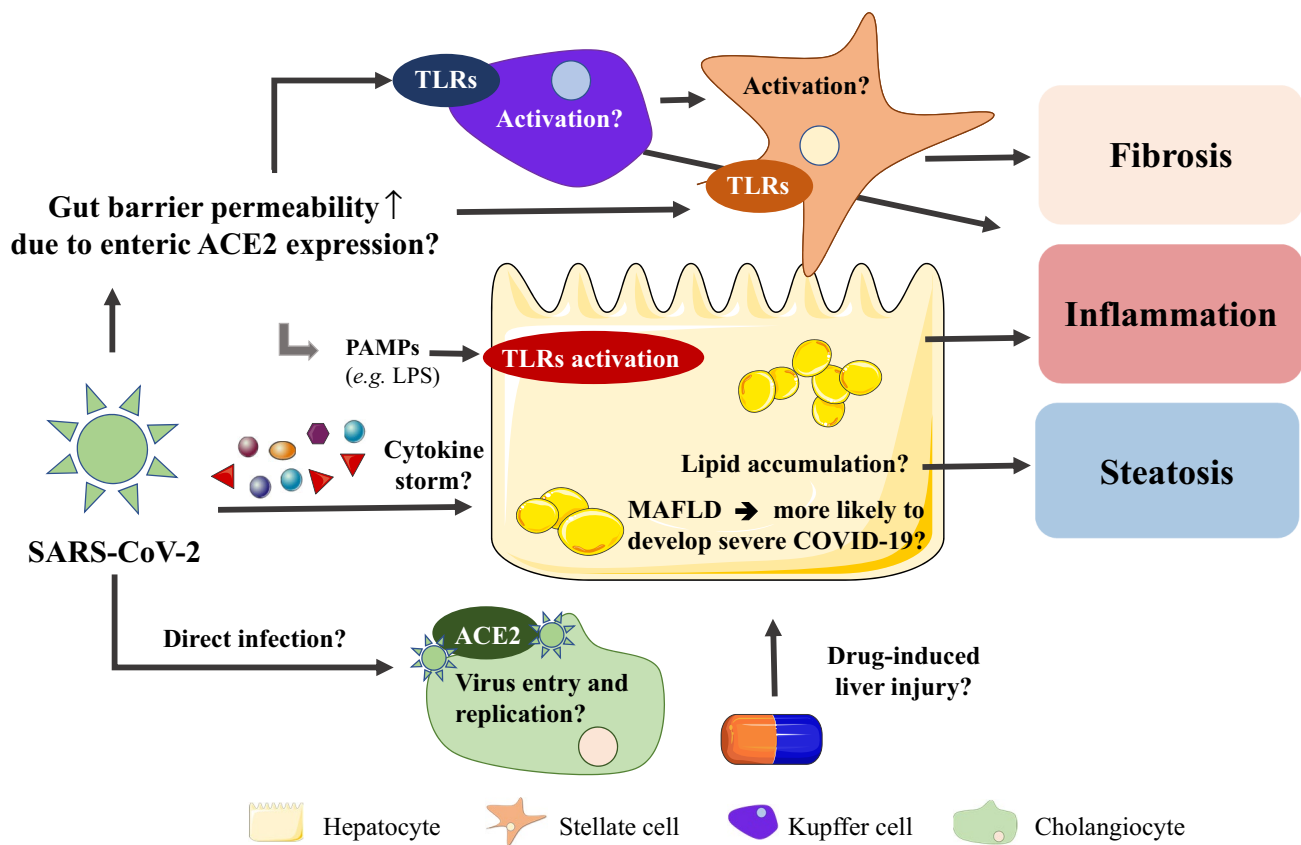


Fig. 1 Possible interconnections between COVID-19 and MAFLD. Disturbed liver laboratory parameters are frequently observed in severe COVID-19 cases. Patients infected by SARS-CoV-2 often exhibit also liver steatosis, while MAFLD seems to aggravate COVID-19. SARS-CoV-2 could induce PAMP translocation from the gut to the liver to initiate Kupffer cell and stellate cell activation

and hence promote an acute inflammatory response. Further, the liver could get damaged or primed for secondary hits by cytokines during cytokine storms. Until today, cholangiocytes are the only liver cells known to express the virus entry receptor ACE2, although specific consequences remain to be investigated

important inflammatory mediator and potent chemoattractant for monocytes and it fulfills a key role in the pathogenesis of NASH (Gao and Tsukamoto 2016). Moreover, earlier research pointed out that CXCL10 and TNF- α serum levels are increased in NASH patients (Zhang et al. 2014; Haas et al. 2019; Manco et al. 2007). Hence, patients suffering from pre-existing hepatic steatosis could possibly progress to more advanced liver disease because of certain cytokines that are involved in the pathogenesis of both the viral infection and NASH itself. These overlapping disease characteristics might be present due to the fact that the liver holds a large pool of tissue macrophages (i.e., Kupffer cells) that could compromise liver function. The alterations in gut permeability and bacterial translocation might not only explain the relation between COVID-19 and MAFLD, but also with inflammatory bowel disease, type 2 diabetes and obesity (Assante et al. 2020).

Hepatitis C

HCV is an enveloped positive-sense single-stranded RNA virus that belongs to the *Flaviviridae* family and causes chronic hepatitis C (CHC). The HCV virion contains a nucleocapsid with a host-derived membrane comprising E1 and E2 viral glycoproteins (Gastaminza et al. 2010; Zhu et al. 2014). HCV particles bind onto low-density lipoproteins (LDL) and very-low-density lipoproteins (VLDL) to form ‘lipo-viro-particles (LVP)’. Viral entry is mediated by scavenger receptor class B type I (SR-BI), cluster of differentiation (CD) 81 and claudin 1 (CLDN1) (Miao et al. 2017; Bugianesi et al. 2006). HCV has been also shown to bind on diacylglycerol acyltransferase-1 (DGAT1) with its nucleocapsid core, further accentuating the close tie between HCV infection and the lipid metabolism of liver cells (Herker et al. 2010).

About 2.5% of the world population is infected by HCV. Seventy percent of these cases is accompanied by liver steatosis and about 20% suffers from liver cirrhosis (Petruzzello et al. 2016). Concomitant presence of CHC and MAFLD has been shown to cause disease progression or prevent effective curative therapy (Brown 2008; Patel and Harrison 2012). Patients suffering from CHC have an 11-times higher risk for developing type 2 diabetes in comparison to high-risk patients without CHC. Furthermore, suffering from CHC also seems to increase the risk for developing type 2 diabetes in patients without predisposing factors (Mehta et al. 2003). Hepatic steatosis during chronic HCV infection stimulates necroinflammation and fibrosis (Adinolfi et al. 2001). In addition, the existence of a ‘HCV-associated dysmetabolic syndrome’ has been postulated as a possible molecular basis for the presence of metabolic syndrome features in patients suffering from hepatitis C (Sheikh et al. 2008; Fletcher et al. 2008).

HCV is characterized by different genotypes (Zein 2000) that intertwine with MAFLD via distinctive molecular mechanisms (Adinolfi et al. 2016) (Fig. 2).

HCV has been shown to down-regulate PPAR- α (Dharancy et al. 2005), which diminishes fatty acid β -oxidation as it targets carnitine palmitoyl acyl-CoA transferase 1A (CPT1A), a key enzyme for mitochondrial fatty acid import (Boeckmans et al. 2020a; Cheng et al. 2005). *PPARA* expression is also decreased in NASH (Francque et al. 2015), which substantiates the similarities between both pathologies. The fact that PPAR- α activation reduces nuclear factor kappa B (NF- κ B) and activator protein (AP)-1-mediated inflammation suggests that PPAR- α downregulation by HCV could be a mechanism of HCV to escape protective host response (Dharancy et al. 2005).

HCV genotypes 1 and 4 have been mainly associated with insulin resistance (Moucari et al. 2008). Of note, liver samples of patients suffering from hepatitis C exhibit a lower expression of insulin receptor substrate (IRS)1 and IRS2, inducing IR. This is, however, restored after clearance of the virus. HCV causes proteasomal degradation of IRS1 and IRS2 that are essential for further insulin signaling through phosphoinositide 3-kinase (PI3K) and Akt (Alsatie et al. 2008; Kawaguchi et al. 2004, 2007). Furthermore, diabetic hepatitis C patients exhibit increased levels of soluble TNF- α receptors. TNF- α can cause detrimental effects on insulin signaling through inhibition of tyrosine kinase activity of the insulin receptor for the phosphorylation and activation of IRS1 (Knobler et al. 2003; Knobler and Schattner 2005). In addition, the levels of soluble TNF- α receptors (in particular sTNF-R75) correlate with histological hepatitis C severity, but not with genotype or quantitative viremia (Zylberberg et al. 1999). Besides worsening insulin resistance and inflammation, patients suffering from HCV genotype 1 infection and liver steatosis also exhibit higher hepatic expression of fatty acid translocase (FAT) (*syn.* CD36). CD36 is a fatty acid transporter whose expression is also elevated in NASH livers and relates to insulin resistance, hyperinsulinemia and MAFLD (Miquilena-Colina et al. 2011). Apart from the involvement of CD36 in lipid metabolism, it has also been shown that CD36 interacts with HCV glycoprotein E1 that could be a co-receptor for HCV entry (Cheng et al. 2016).

Hepatic steatosis has been reported to accelerate the progression of liver damage, by means of necroinflammatory activity and fibrosis progression in patients suffering from HCV genotype 3 infection (Adinolfi et al. 2001). However, in these patients, but not in individuals infected by the HCV genotype 1 or 4, steatosis evades upon effective treatment which points to a direct role of the virus in lipid metabolism irrespective of secondary risk factors for MAFLD (Kumar et al. 2002). Yet, this also substantiates

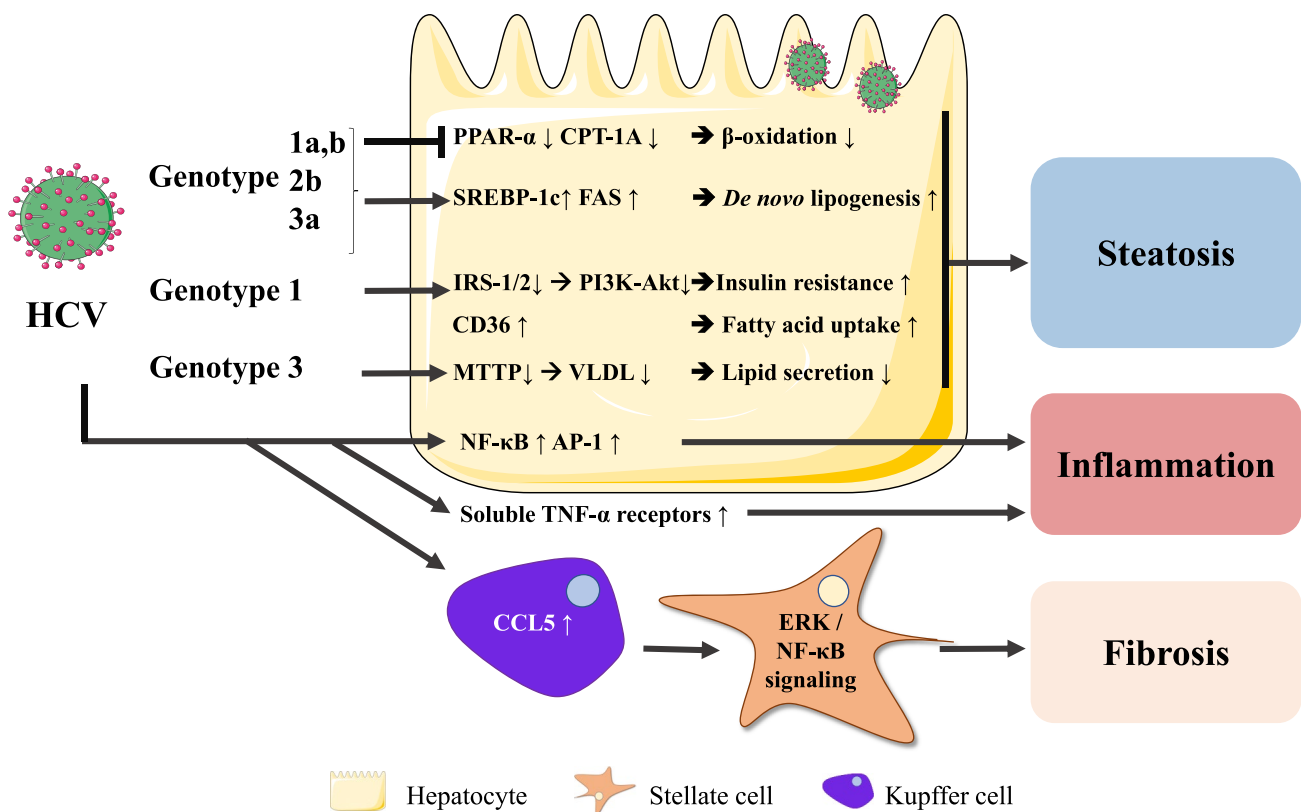


Fig. 2 HCV-mediated mechanisms leading to hepatic steatosis and inflammation. HCV infection leads to SREBP-1c-mediated lipid accumulation and PPAR- α /PPARA and CPTA downregulation, suggesting impaired fatty acid β -oxidation and reduced repression of

inflammation. HCV genotypes 1 and 4 infections are associated with insulin resistance, while HCV genotype 3 infection impairs VLDL-mediated triglyceride secretion. HCV-exposed Kupffer cells secrete CCL5 resulting in hepatic stellate cell activation

the presence of different pathogenic mechanisms that both require specific treatment strategies.

HCV genotypes 1a, 1b, 2b and 3a have been found to induce *fatty acid synthase* (FAS) expression through sterol regulatory element-binding protein (SREBP)-1c. HCV genotype 3a causes a stronger SREBP-1c-mediated induction of FAS than the 1b genotype, which points to a genotype-specific effect that also correlates with the clinical observations (Waris et al. 2007; Jackel-Cram et al. 2007). Hypobetalipoproteinemia has also been linked to HCV genotype 3a infection. This virus is thought to inhibit the microsomal triglyceride transfer protein (MTTP) that mediates VLDL assembly from ApoB and lipids, resulting in impaired VLDL secretion and thus intracellular lipid accumulation in hepatocytes (Serfaty et al. 2001; Gordon and Jamil 2000; Chan et al. 2017).

Although HCV is not known to directly infect hepatic stellate cells (Florimond et al. 2015), it has been shown that HCV-exposed Kupffer cells secrete CCL5 that triggers NF- κ B and ERK signaling in stellate cells, resulting in the expression of genes encoding pro-inflammatory (NLR Family Pyrin Domain Containing 3 (NLRP3), IL1B, IL-6 and CCL5) and pro-fibrotic (transforming growth factor

(TGF- β 1), collagen 4A1 (COL4A1), matrix metalloproteinase 2 (MMP2) and α -smooth muscle actin (α -SMA)) markers (Sasaki et al. 2017). The pro-inflammatory and -fibrotic interplay between non-parenchymal liver cells in hepatitis C shares important mechanisms with triggers that promote fatty liver disease progression, including Kupffer cell CCL5 secretion (Boeckmans et al. 2018), accentuating the relationship between both pathogeneses.

Hepatitis A, B, D and E

In comparison to hepatitis C, less evidence is available for the involvement of hepatitis A, B, D and E in fatty liver disease development and progression.

The hepatitis A virus (HAV) is a positive-sense single-stranded RNA virus that belongs to the *Picornaviridae* family. HAV is mainly transmitted through the oral-fecal route by for example contaminated food (Lin et al. 2017). It has been suggested that past exposure to HAV protects against advanced fibrosis in MAFLD. Reasons behind this protective effect could be a reversal of the imbalance between pro- and anti-inflammatory cytokines and early-age gut colonization

with orofecal microbes that could exert a hepatoprotective effect (de Silva et al. 2008).

The hepatitis B virus (HBV) is a DNA virus that belongs to the family of *Hepadnaviridae* (Liang 2009). About 300 million people are chronically infected with HBV (MacLachlan and Cowie 2015) and evidence has been provided that HBV infection can result in cirrhosis and hepatocellular carcinoma (Giovanna et al. 2008). HBV does not require a cell type-specific target for cellular attachment (Urban et al. 2010). It binds the heparan sulfate proteoglycans at the cell surface, which is then followed by a hepatocyte-specific interaction of the HBV surface L-protein with Na⁺-taurocholate co-transporting polypeptide (NTCP) (Yan et al. 2012; Ni et al. 2014). HBV infection has been shown to inversely correlate with the risk for MAFLD (Xiong et al. 2017), probably because HBV infection inversely associates with the metabolic syndrome (Jan et al. 2006). HBV infection negatively relates to hypoalphalipoproteinemia (Zhao et al. 2018) and seems to lower the risk for developing dyslipidemia (Joo et al. 2019). Based on these studies, HBV and MAFLD comorbidity appears to decrease the progression or severity of these diseases. In contrast, it was recently reported that patients suffering from NASH and chronic hepatitis B have more advanced liver fibrosis and die earlier or develop in a shorter time liver-related outcomes than patients without NASH (Choi et al. 2020), suggesting a synergistic effect in the more advanced disease states.

The hepatitis D virus (HDV) holds a circular single-stranded RNA genome and is not classified in a family. HDV infection occurs through parenteral transmission and requires HBV co-infection to be infectious (Taylor 2018). Seen the increasing control of hepatitis B through vaccination, hepatitis D is considered a disappearing disease (Khuroo and Sofi 2020).

The hepatitis E virus (HEV) is a positive-sense single-stranded RNA virus that belongs to the *Hepeviridae* family. The HEV is enterically transmitted and is a leading cause of acute viral hepatitis (Lhomme et al. 2020). Hepatitis E is considered as a factor that can cause ‘acute on chronic hepatitis’ (Frias et al. 2018) and MAFLD/NASH cases have been reported as well (Davern et al. 2011; Lenggenhager et al. 2020). Yet, the mechanisms by which HEV may contribute to the development of MAFLD have not been documented.

Human immunodeficiency viruses

HIV is a single-stranded RNA virus that belongs to the family of *Retroviridae* and is subdivided in HIV-1 and HIV-2 (Seitz 2016). About 14,000 people are infected every day by HIV (Eilami et al. 2019). Fatty liver occurs in up to 48% of HIV-infected patients (van Welzen et al. 2019) and is accompanied by inflammation and fibrosis when compared to uninfected patients (Papagianni and Tziomalos 2018; Vodkin

et al. 2015). Nonetheless, the occurrence of steatosis-promoting factors is similar between HIV-infected patients and the general population (Macías et al. 2017). Besides metabolic inducers, multiple HIV-specific factors are thought to contribute to MAFLD in HIV-infected patients, including the virus itself, gut–liver axis and highly active antiretroviral therapy (HAART) (Vallet-Pichard et al. 2012). Since cardiovascular complications are common in HIV-infected patients (Low et al. 2019; So-Armah and Freiberg 2018), and cardiovascular disease is a top-leading death cause in MAFLD patients (Paik et al. 2019), synergistic effects seem possible.

Effects of HIV on distinct liver cell populations

HIV uses the CD4 receptor on T-helper cells (Seitz 2016) for cellular attachment. Further entry is mediated by, among others, the C–C chemokine receptor 5 (CCR5) and C–X–C chemokine receptor 4 (CXCR4) (Dean et al. 1996; Feng et al. 1996). CD4 is not expressed in hepatocytes, although its co-factor for cellular entry, CXCR4, is present (Vlahakis et al. 2003). Apoptosis induced by HIV interaction (via gp120) with CXCR4 expressed by hepatocytes has been reported (Vlahakis et al. 2003), which is a distinctive feature of NASH compared to benign liver steatosis (Boeckmans et al. 2018). On the other hand, HIV is able to infect Kupffer cells, the liver resident macrophages (Ganesan et al. 2018). CD4+ T cell depletion leads to increased gut barrier permeability resulting in translocation of PAMPs to the liver (Somsouk et al. 2015; Rocafort et al. 2019). HIV-infected Kupffer cells exhibit increased expression of Toll-like receptor 4 (TLR4) and CD14 along with an increased release of TNF- α , IL-6 and IL-1 β in response to LPS (Mosoian et al. 2017; Zhang et al. 2019) (Fig. 3). This sequence of events is substantiated by the fact that liver tissue obtained from HIV-positive patients exhibits in situ IL-1 β expression in CD68+ cells (Zhang et al. 2019).

HIV infection of stellate cells results in increased collagen type 1 expression and CCL2 release that play prominent roles in the pathogenesis of NASH (Tuyama et al. 2010; Chamroonkul and Bansal 2019). Specific interaction of gp120 with stellate cells induces CCL2 secretion as well as expression of *IL-6* and *tissue inhibitor of metalloprotease-1 (TIMP1)* (Bruno et al. 2010), which are known mediators of hepatic inflammation and fibrosis.

The interaction of HIV with TLR4 on both stellate cells and liver macrophages highlights the importance of TLR signaling in the inflammatory response of the liver triggered by HIV (Del Cornò et al. 2016).

Anti-HIV treatment promotes MAFLD development

HAART (Seth 2019), i.e., intake of nucleoside reverse transcriptase inhibitors (NRTIs), non-nucleoside reverse

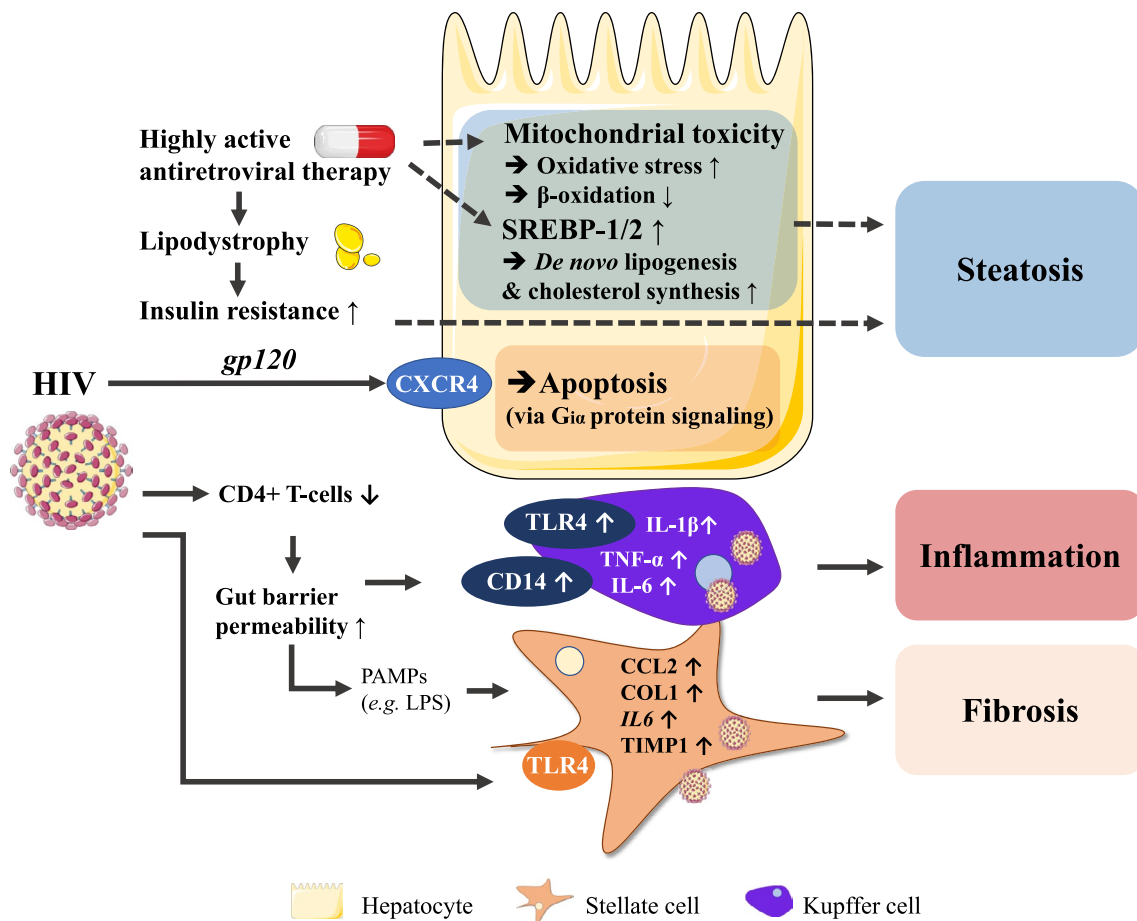


Fig. 3 HIV- and HAART-mediated mechanisms leading to hepatic steatosis, inflammation and fibrosis. HIV itself can induce liver inflammation via TLRs, hepatocyte apoptosis through CXCR4 and fibrosis by directly (via envelope glycoprotein gp120) and indirectly

(via LPS) activating stellate cells. HAART-associated lipodystrophy induces insulin resistance and hepatic steatosis while also evoking mitochondrial toxicity

transcriptase inhibitors and protease inhibitors (PIs) (Shafer and Vuitton 1999), is often accompanied by lipodystrophy, a process culminating in the lack of adipocytes to store (excess) fatty acids and triglycerides (Polyzos et al. 2009, 2019).

NRTIs, especially thymidine analogues, evoke hypoadiponectinemia, hypertriglyceridemia and lipodystrophy. Among the NRTIs, stavudine and didanosine are also known to exert mitochondrial toxicity that could lead to the generation of reactive oxygen species and impair fatty acid β -oxidation (White 2001; Feeney and Mallon 2010). These patients exhibit microvesicular hepatic steatosis, which correlates with more advanced MAFLD histology (Tandra et al. 2011). Intake of PIs, on the other hand, can result in insulin resistance through inhibition of GLUT4 (Yan and Hruz 2005). Ritonavir has been shown to induce SREBP-1 and SREBP-2 translocation to the nucleus in mice, transcription factors known to promote lipogenesis

and cholesterol biosynthesis, which could lay at the origin of fatty liver development (Riddle et al. 2001). HAART can also alter growth hormone secretion that associates with lipodystrophy (Rochira and Guaraldi 2017). Insulin resistance, along with induced lipodystrophy, can lead to body fat redistribution and hepatic steatosis (Vallet-Pichard et al. 2012). HIV-1 is known to suppress PPAR- γ transcriptional activity and adipocyte differentiation (Shrivastav et al. 2008; Otake et al. 2004) and this mechanism can hence also contribute to the HAART-mediated lipodystrophy.

HIV and anti-MAFLD treatment

Patients suffering from HIV infection are often excluded from clinical trials because of possible drug-drug interactions. Yet, considering the burden of MAFLD among HIV-infected patients, it is of utmost importance to also evaluate

novel therapies in these patients or to set up in vitro experiments with cells of human origin, infected or not. Moreover, cenicriviroc, a dual CCR2/CCR5 antagonist, is under development for both HIV infection and NASH treatment (Guaraldi et al. 2020) since the CCR2 and CCR5 receptors are common drug targets in both diseases.

Human cytomegalovirus

The human cytomegalovirus (CMV) is a DNA virus belonging to the *Herpesviridae* family. Over 40% of the world population is infected with CMV that persists latently throughout adulthood (Seitz 2010; Cannon et al. 2010). CMV can replicate in multiple cell types among which epithelial cells of gland and mucosal tissue, smooth muscle cells, fibroblasts, macrophages, dendritic cells, hepatocytes and vascular endothelial cells (Beltran and Cristea 2014).

CMV-related MAFLD is dependent on gender and body mass index

The correlation between CMV infection and metabolic risk factors for developing MAFLD appears to be gender- and body mass index (BMI)-specific. First, CMV infection seems to be associated with the metabolic syndrome only in females. Second, while normal weight CMV-immunoglobulin (Ig)G seropositive females exhibit a higher prevalence of dyslipidemia and metabolic syndrome, these effects are not shared with females suffering from extreme obesity that surprisingly showed to have higher HDL- and lower LDL cholesterol (Fleck-Derderian et al. 2017).

CMV could promote MAFLD through de novo lipogenesis and oxidative stress

In vitro analysis showed that CMV-infected human fibroblasts exhibit increased activity of ACC, which is the first rate-limiting enzyme in the de novo lipogenesis pathway and is regulated by SREBP-1c (Boeckmans et al. 2018). Mice expressing CMV-derived regulatory protein IE2 (UL122) showed increased gene- and protein expression of SREBP-1c, which was associated with hepatic steatosis (Zhang et al. 2018). Increased hepatic SREBP-1c levels indeed correlate with hepatic steatosis, although decreased levels relate to advanced NASH (Nagaya et al. 2010). This evokes the question whether CMV infection can effectively compromise liver functions. Fibroblasts infected with CMV exhibit stressed mitochondria that have an increased mass and membrane potential (Combs et al. 2019), which could lead to oxidative stress and hence MAFLD progression. Yet, it has been proposed that intracellular CMV could induce (compensatory) anti-oxidative effects to take more advantage from the host cell for replication. Indeed, CMV-infected

human fibroblasts increase their production of enzymes that synthesize and utilize glutathione and activate specific NF-E2 related factor 2 (Nrf2) target genes that exert protective effects against oxidative stress (Tilton et al. 2011; Lee et al. 2013; Lee 2018). As such, although these results are of high experimental nature, MAFLD-inducing mechanisms might be abrogated due to virus-specific cellular alterations.

Future (human) studies should, however, take into account the specific roles of primary and reactivated infections (e.g., by measuring CMV DNA viral load) and explore whether CMV infection precedes the development of the metabolic syndrome or not (Fleck-Derderian et al. 2017).

Dengue virus

Dengue virus is a positive-sense single-stranded RNA virus that belongs to the family of the *Flaviviridae* and is transmitted by *Aedes* mosquitoes. About 50 million people get infected every year. Dengue disease can be asymptomatic but also manifest as the “dengue shock syndrome” leading to multiple organ failure with fatal outcome (Huy et al. 2013).

Tropism of the dengue virus is not well documented, but involves the immune system, liver, and endothelial blood vessel cells (Martina et al. 2009; Begum et al. 2019). Although the dengue shock syndrome resulting in multiple organ failure is the main cause of dengue virus-related death, deterioration of liver functions due to severe hemorrhagic liver necrosis with micro- and macrovesicular steatosis and periportal inflammatory infiltrate, has also been reported as a death cause (Kularatne et al. 2014).

Most information with regard to liver histology among dengue virus-infected patients is based on postmortem analyses. Liver tissue of children that died from dengue virus infection showed varying injury degree, including congestion of the liver sinusoids and hepatocyte cell death. Most reported cases exhibited liver steatosis accompanied by hepatocyte ballooning (Aye et al. 2014; Huerre et al. 2001), which is a hallmark of NASH (Kleiner et al. 2005). These effects have been confirmed in dengue-2 virus-infected BALB/c mice, that showed hepatocyte micro- and macro-steatosis, swelling and necrosis (Paes et al. 2009). Although these findings do not per se indicate a direct correlation between dengue virus infection and fatty liver disease/steatohepatitis, dengue virus-infected patients with plasma leakage that suffer as well from MAFLD have more severe hemoconcentration, thrombocytopenia and prolonged hospital stay (Suwanto et al. 2018).

Yellow fever virus

The yellow fever virus (YFV) is a positive-sense single-stranded RNA virus that belongs to the *Flaviviridae* family. The YFV is also transmitted by *Aedes* mosquitoes and

is endemic in Africa and South America, infecting about 200,000 persons every year. YFV infection is fatal in about 5% of the infected individuals (Waggoner et al. 2018). Infection can cause hepatocyte midzonal steatosis, apoptosis and lytic necrosis. The massive hepatocyte death during yellow fever is, however, mainly due to apoptosis (Simões Quaresma et al. 2005), which differentiates NASH from simple steatosis (Boeckmans et al. 2018). Analysis of liver biopsies from fatal yellow fever cases showed that the virus-induced hepatocyte apoptosis is likely mediated by TGF- β , TNF- α and natural killer cell activity (Quaresma et al. 2006). Although correlation studies are lacking, pre-existing NASH could potentially potentiate liver failure during yellow fever.

Bacteria and parasites

It has been well documented that bacterial infections that are not necessarily hepatotropic, can influence liver functionality and development of hepatic diseases (Minemura et al. 2014). Further, the dysfunction of the gut mucosal barrier (leaky gut) can lead to bacterial translocation from the gut to the liver via the gut–liver axis (Giannelli et al. 2014). Multiple bacteria, including *H. pylori*, *K. pneumoniae*, *Chlamydia* species and bacteria involved in periodontitis can specifically contribute to the progression of MAFLD (Upala et al. 2016; Yuan et al. 2019; Bolukbas et al. 2005; Marangoni et al. 2015; Alakhali et al. 2018).

Most research regarding parasitic infections and fatty liver disease concerns *Plasmodium* species. Although specific links exist between MAFLD and the parasitic infections discussed below, there is no general consensus for an important interrelationship. However, several lines of experimental evidence are present that infections caused by *Plasmodium* species, *Schistosoma* species, *Toxoplasma gondii* (*T. gondii*) and *Trypanosoma cruzi* (*T. cruzi*) are at the interface with MAFLD (Viriyavejakul et al. 2014; Chen et al. 2013; Huang et al. 2018; Lucchetti et al. 2019).

Helicobacter pylori

H. pylori is a commensal Gram-negative bacterium that mainly persists in the gastroduodenal mucosa where it can cause peptic ulcer (Brown 2000). About half of the world population is colonized with *H. pylori* which generally occurs before the age of 10 years (Cover and Blaser 2009). *H. pylori* infection seems to positively associate with the presence of the metabolic syndrome (Upala et al. 2016) and MAFLD (Liu et al. 2019; Wijarnpreecha et al. 2018; Mantovani et al. 2019).

H. pylori-related MAFLD largely depends on fetuin A and lipoproteins

H. pylori-positive patients exhibited higher Homeostatic Model Assessment for Insulin Resistance (HOMA-IR) scores and fasting insulin serum levels compared to *H. pylori*-negative patients (Eshraghian et al. 2009). Moreover, *H. pylori* IgG seropositivity has been associated with hepatocyte ballooning (Sumida et al. 2015), which is characteristic of NASH (Zanto et al. 2010), suggesting a potential association between *H. pylori* infection and the progression of simple steatosis to NASH. A possible interaction mechanism between *H. pylori* infection and MAFLD involves fetuin A or alpha 2-HS glycoprotein (AHSG), which is a serum glycoprotein synthesized by hepatocytes that plays a role as a carrier of free fatty acids. Indeed, higher serum fetuin A levels in *H. pylori*-positive patients have been reported to correlate with impaired insulin sensitivity and glucose tolerance (Fig. 4) (Stefan and Häring 2013; Trepanowski et al. 2015). Increased fetuin A serum levels and hepatic gene expression have also been related to hepatic steatosis and NASH (von Loeffelholz et al. 2016; Kahraman et al. 2013). Furthermore, in vitro studies using rodent myoblasts indicated that fetuin A inhibits tyrosine kinase activity of the insulin receptor and blocks insulin-mediated glucose transporter type 4 (GLUT4) translocation and protein kinase B (Akt) activation, thereby promoting insulin resistance (Goustin et al. 2013). Fetuin A also acts as an endogenous adaptor protein for free fatty acid-mediated activation of TLR4 in mice. Activation of TLR4 typically results in an inflammatory response through activation of NF- κ B and c-Jun N-terminal kinase (JNK) signaling pathways (Pal et al. 2012). This might reflect the presence of the wide panel of inflammatory mediators (c-reactive protein, TNF- α , IL-6, IL-1 β) in patients suffering from *H. pylori* infection. These pleiotropic effects of fetuin A could, therefore, represent an alternative mechanism for steatohepatitis development during *H. pylori* infection. Besides increasing fetuin A levels, *H. pylori* infection could also contribute to gut barrier disruption leading to translocation of LPS and other PAMPs to the liver (Dash et al. 2019; Quesada-Vázquez et al. 2020) that are known activators of Kupffer cells and stellate cells to promote fibrosis (Boeckmans et al. 2018). In addition, *H. pylori* infection is associated with lower high-density lipoprotein (HDL) cholesterol serum values (Upala et al. 2016), known to promote dyslipidemia (Chatrath et al. 2012). *H. pylori* eradication increases HDL and decreases low-density lipoprotein (LDL) cholesterol (Niegawa et al. 2018), thereby restoring the cardioprotective activity of the HDL/LDL ratio and decreasing the cardiovascular risk related to MAFLD (Sun et al. 2016). Furthermore, *H. pylori* eradication increases serum adiponectin levels (Ando et al. 2013),

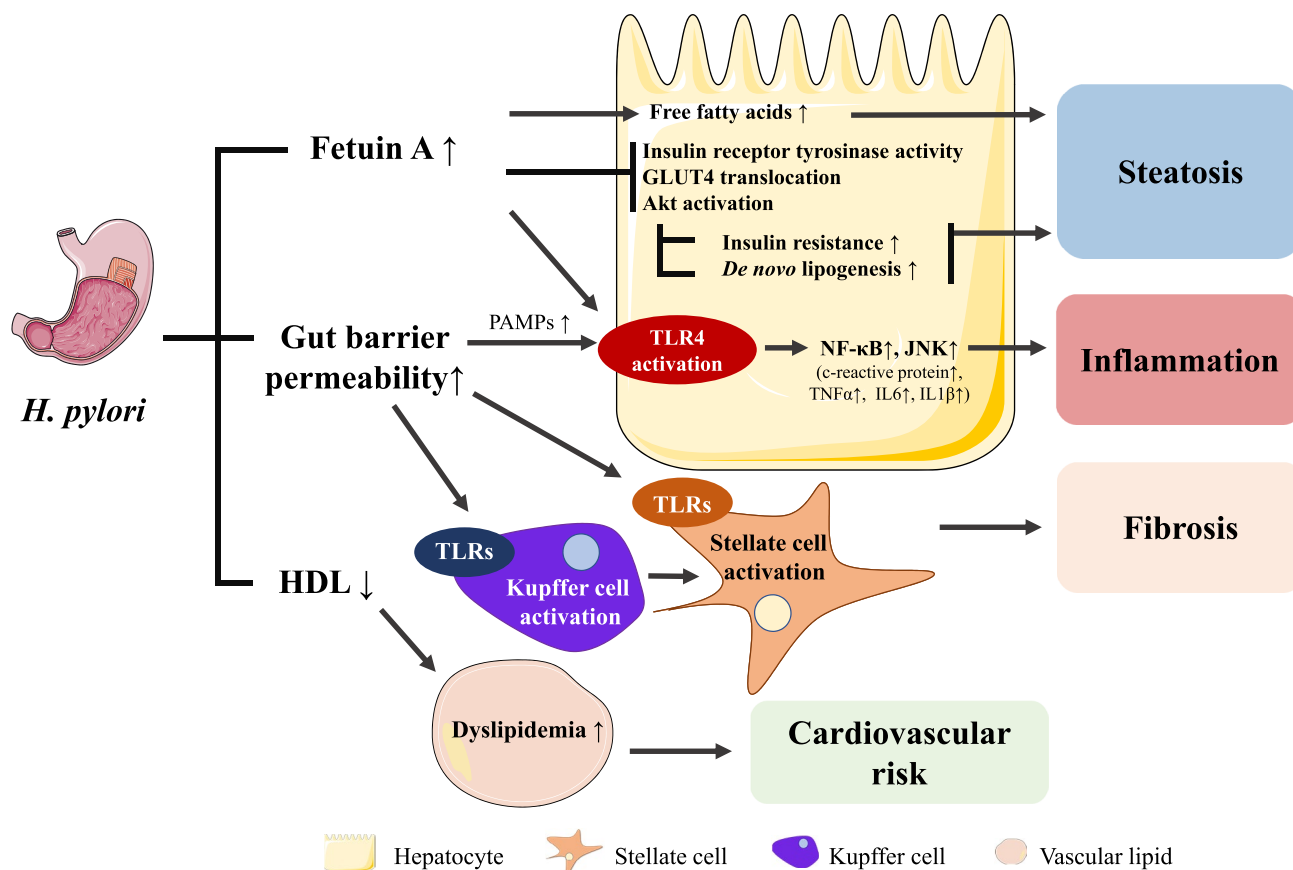


Fig. 4 *H. Pylori*-infection-mediated mechanisms leading to hepatic steatosis inflammation and fibrosis. *H. Pylori* infection relates to increased serum fetuin A levels. Fetuin A can impair insulin signaling by interrogating with, among others, insulin receptor tyrosine kinase

activity and promote inflammation through TLR4 activation. *H. Pylori* infection probably also relates to increased gut barrier permeability which can result in translocation of PAMPs to the liver through the gut-liver axis and initiate inflammation and fibrosis

which could enhance insulin sensitivity and lead to whole-body metabolic improvements (Ando et al. 2013; Stern et al. 2016).

Klebsiella pneumoniae

Klebsiella pneumoniae (*K. pneumoniae*) is a commensal Gram-negative bacterium of the *Enterobacterales* order that can cause opportunist infections in the compromised (usually hospitalized) host (Paczosa 2016). It has been shown that alterations in gut microbiota may contribute to a series of diseases including type 2 diabetes, obesity and MAFLD (Abu-Shanab and Quigley 2010).

Ethanol fulfills a role in the pathogenesis of MAFLD

One particular aspect of alterations in gut microbiota in MAFLD is a shift towards ethanol-producing bacteria (Marra and Svegliati-baroni 2017), suggesting that ethanol also fulfills a role in the pathogenesis of MAFLD. In

that view, it has been observed that ethanol-producing *K. pneumoniae* are present in up to 60% of MAFLD patients. The causative role of *K. pneumoniae* was evidenced by oral gavage of clinical isolates in mice as well as fecal microbiota transplantation. When the ethanol-producing *K. pneumoniae* strain was selectively removed from the fecal transplant, the mice did not develop MAFLD (Yuan et al. 2019). The NASH-promoting effects induced by *K. pneumoniae* are at least in part due to mitochondrial dysfunction (Chen et al. 2020), leading to oxidative stress which is a hallmark of NASH (Buzzetti et al. 2016). Furthermore, liver-infiltrating T cells, neutrophils, macrophages, and B cells were more abundant in mice fed the ethanol-producing *K. pneumoniae* strain or ethanol (Yuan et al. 2019), indicating immune system activation. Hence, although clinical evidence is lacking, the presence of ethanol-producing *K. pneumoniae* in the gut can be considered as a risk factor for MAFLD.

Periodontitis

Periodontitis is a chronic infectious disease in which an inflammatory response occurs due to the interplay between oral microorganisms and the host immune system (Pihlstrom et al. 2005).

Suffering from periodontitis can increase the risk for MAFLD development.

Although the number of prospective cohort studies is small, a systematic review concluded that periodontitis could enhance the risk for MAFLD development and progression (Alakhali et al. 2018). A periodontal probing pocket depth greater than 4 mm has been documented as a risk factor for MAFLD (Iwasaki et al. 2018) and the association between periodontitis and NASH is stronger when accompanied by significant liver fibrosis (Alazawi et al. 2017). Periodontitis has also been associated with poorly controlled type 2 diabetes (Salvi et al. 2008) as well as an increased prevalence and incidence of coronary heart disease (Bahekar et al. 2007). Considering that type 2 diabetes is a major risk factor for MAFLD (Finck 2018) and that cardiovascular disease is the leading death cause among MAFLD patients (Stefan et al. 2018), it is not surprising that periodontitis also occurs more frequently within this patient group.

Multiple bacteria could be implicated in periodontitis-related MAFLD

Multiple phyla have been related with periodontitis among which *Bacteroidetes*, *Candidatus Saccharibacteria*, *Firmicutes*, *Proteobacteria*, *Spirochaetes*, *Synergistetes*, *Porphyromonas* and *Aggregatibacter* (Pérez-Chaparro et al. 2014; Guentsch et al. 2009). *Aggregatibacter actinomycetemcomitans* (*A. actinomycetemcomitans*) is a Gram-negative perio-pathogenic bacterium that has been linked to localized aggressive periodontitis (Arora et al. 2015). It was found that higher occurrence of *A. actinomycetemcomitans* was associated with periodontitis in type 1 and type 2 diabetes patients (Castrillon et al. 2015) and that IgG seropositivity positively related with visceral fat, fasting plasma insulin levels, and HOMA-IR score. Using mice colonized with *A. actinomycetemcomitans* and fed a high-fat diet (HFD), it was demonstrated that additional administration of *A. actinomycetemcomitans* led to higher hepatic steatosis compared to mice that did not receive the microorganism. Furthermore, these mice also exhibited increased expression of genes related to glucagon and adipocytokine signaling and insulin resistance along with lower Akt phosphorylation (Komazaki et al. 2017). *Porphyromonas gingivalis* (*P. gingivalis*) is also more common in the saliva of NASH patients (Yoneda et al. 2012) and antibody titers against fimbriae type 4 relate to

fibrosis severity (Nakahara et al. 2018). Further, mice with dental *P. gingivalis* infection and fed with a HFD developed more severe steatosis and fibrosis in comparison to mice without the dental infection. Liver samples of mice with dental *P. gingivalis* infection exhibited lower *stearoyl-CoA-desaturase (SCD1)* and *fatty acid elongase 6 (ELOVL6)* levels, which is, however, inconsistent with the higher steatosis rate. These animals also showed increased hepatic levels of unsaturated fatty acids, which might be seen as a protective and compensatory mechanism (Nakahara et al. 2018). Hence, *A. actinomycetemcomitans* and *P. gingivalis*-related periodontitis may potentiate risk factors for developing insulin resistance, type 2 diabetes and consequently MAFLD.

Chlamydia pneumoniae/trachomatis

Chlamydia pneumoniae (*C. pneumoniae*), a respiratory pathogen, and *Chlamydia trachomatis* (*C. trachomatis*), one of the most prevalent sexually transmitted organisms, are obligate intracellular Gram-negative bacteria (Di Pietro et al. 2019). In a small study with male patients, it was observed that *C. pneumoniae* IgA seropositivity was significantly more often present in patients suffering from NASH (53.3 vs 5%), while this was not the case for IgG (Bolukbas et al. 2005). This correlation might reflect earlier studies that report a link between persistent *C. pneumoniae* infection and the metabolic syndrome (Laurila et al. 1997; Leinonen and Saikku 1999), although conflicting results exist (Falck et al. 2002). Nonetheless, *C. pneumoniae* infection induced dyslipidemic effects in mice and also altered the hepatic expression of genes involved in lipid metabolism, including reduced expression of *CPT1A* and *acyl-CoA dehydrogenase medium chain (ACADM)*, pointing to compromised mitochondrial fatty acid oxidation. Moreover, expression of liver *IL1B* mRNA was induced (Marangoni et al. 2015), indicating an inflammatory response.

In addition, *C. trachomatis* infection seems to intervene with hepatic lipid metabolism and inflammation. In Chang Liver cells, *C. trachomatis* induced fatty acid uptake via fatty acid binding protein 1 (L-FABP) expression which promoted chlamydial intracellular growth (Wang et al. 2007). Furthermore, *C. trachomatis*-infected mice showed increased hepatic *IL-6* and *TNFA* mRNA expression, which both are typical markers involved in NASH. Yet, this was accompanied with decreased levels of the de novo lipogenic genes acetyl-coenzyme A carboxylase (*ACC*) and *FAS* (Marangoni et al. 2015).

Taken together, although a direct link between *Chlamydia* species infections and MAFLD is lacking, different molecular connections can be made which points to the need for more research in this area, especially when considering the asymptomatic nature of the infection (Di Pietro et al. 2019; Hyman et al. 1995).

Plasmodium

Malaria is the most common parasitic mosquito-borne disease (White et al. 2014). The responsible parasites are unicellular protozoan that can cause fever, anemia, coma and death. After mosquito-mediated host entry of sporozoites, the parasite asexually reproduces merozoites in hepatocytes. The first symptoms appear upon the first liver schizont rupture releasing merozoites that are competent to infect erythrocytes. A subset of *Plasmodium* species is able to infect humans (*P. falciparum*, *P. vivax*, *P. ovale*, *P. malariae* and *P. knowlesi*) (Milner 2018). Most frequent and severe cases are caused by *P. falciparum* and *P. vivax* that together infect over 200 million persons each year. Nearly, all malaria-related deaths result from *P. falciparum* infection (White et al. 2014).

Severe malaria cases often exhibit hepatic dysfunction and jaundice, which histopathologically manifest as hepatocyte necrosis, granulomatous lesions, Kupffer cell hyperplasia, malarial pigmentation, cholestasis and monocyte infiltrations to malarial nodules (Reuling et al. 2018).

Type 2 diabetes mellitus increases the risk for *P. falciparum* infection which might be due to decreased T cell-mediated immunity and increased glucose availability for the parasite (Danquah et al. 2010; Muller et al. 2005). *P. falciparum* infection is generally not associated with MAFLD progression. Yet, severe cases are accompanied by hyperplastic Kupffer cells and portal tract inflammation along with increased NF- κ B p65 and cleaved caspase-3 expression in Kupffer cells and lymphocytes (Viriyavejakul et al. 2014). In accordance, enlarged Kupffer cells have also been seen in the perivenular regions in human NASH liver biopsies (Lefkowitz et al. 2002). Therefore, the interplay between increased risk for *P. falciparum* infection and common hepatic histopathological features of NASH could result in an increased risk for synergetic liver disease progression.

Of note, *Plasmodium* merozoites require specific fatty acids that cannot be endogenously produced, although essential for development and replication. Mice infected with *P. chabaudi* exhibit hyperproteinemia, hypertriglyceridemia, hypoglycemia, and hypocholesterolemia. Moreover, these mice also show hepatic accumulation of free fatty acids, cholesterol and triglycerides along with promotion of gene- and protein expression of PPAR- γ and FAS together with reduced 5' AMP-activated protein kinase (AMPK) phosphorylation. Remarkably, these effects are rescued by metformin treatment, which is an AMPK activator (Kluck et al. 2019). Importantly, metformin also attenuates *P. falciparum* growth in human hepatocytes (Vera et al. 2019), suggesting a possible avenue for drug repurposing.

Toxoplasma gondii

T. gondii is a protozoan parasite that latently encysts in multiple tissues including skeletal and cardiac muscle, retina, and the central nervous system (Mendez and Koshy 2017). It is estimated that one-third to half of the world population is infected with *T. gondii* during lifetime (Flegr et al. 2014). In a population-based study, MAFLD was found to positively relate to the presence of *T. gondii* in an age-dependent way (Huang et al. 2018). Yet, no strong evidence exists that *T. gondii* infection is associated with MAFLD and further studies are warranted.

Schistosoma

Schistosomiasis is caused by flukes of the genus *Schistosoma* that infect among others liver, intestine, bladder and urethra. Five of these trematodes can infect humans, i.e., *S. haematobium*, *S. intercalatum*, *S. japonicum*, *S. mansoni* and *S. mekongi*. Each year, 230–250 million persons are infected worldwide and schistosomiasis is, therefore, the second most common parasitic infection after malaria (Nelwan 2019). In a specific rural Chinese population, it was found that people that previously have undergone schistosomal infection exhibit lower prevalence of diabetes and a better metabolic profile (Chen et al. 2013). Indeed, in vivo and in vitro experiments showed that *S. japonicum* infection leads to reprogramming of liver glycolipid metabolism in the direction of decreased lipogenesis and increased fatty acid catabolism (Xu et al. 2019). Recently, these findings have been confirmed in HFD-fed, *S. mansoni*-infected mice that showed an improvement of their metabolic syndrome features. However, these beneficial effects developed at the expense of more advanced liver injury, suggesting the presence of both favorable as detrimental effects of schistosomal infection (da Silva Filomeno et al. 2020).

Trypanosoma cruzi

T. cruzi is a protozoan that causes Chagas disease. *T. cruzi* infection in mice reduces hepatic steatosis and exacerbates TLR4-mediated hepatic inflammation (Onofrio et al. 2015; Lucchetti et al. 2019; Cabalén et al. 2016) which could worsen steatohepatitis. From the opposite perspective, the metabolic syndrome also intensifies Chagas disease in mice during the acute phase of *T. cruzi* infection (Lucchetti et al. 2019), suggesting an interrelationship between the metabolic syndrome, *T. cruzi* infection and MAFLD.

General remarks and conclusion

Multiple pathogens may promote or potentiate fatty liver disease and steatohepatitis development, and therefore, synergistically provoke MAFLD progression to end-stage

liver disease. Studies related to MAFLD are often situated at the interface of pathogen-induced fatty liver disease. This applies to HCV infection and NASH, both characterized by decreased *PPARA* levels (Dharancy et al. 2005; Franque et al. 2015). HCV (Cheung and Sanyal 2008) and HIV (van Welzen et al. 2019) infections are best known for their liver steatosis- and inflammation-inducing properties. Considering the silent nature of MAFLD, especially asymptomatic infections or colonization by certain pathogens could worsen and accelerate fatty liver disease development throughout life. In contrast, acute highly symptomatic infections that require quick (pharmacological) intervention might readily impact liver physiology and detriment MAFLD as well on the long run. Nonetheless, the causative link between a pathogen and MAFLD deterioration in humans is difficult to establish seen its multifactorial nature. Indeed, Koch's postulates (Byrd and Segre 2016) are most often not fulfilled.

We speculate, however, that although specific molecular and cellular links between infectious diseases and MAFLD can be drawn, pathogens can put additional pressure on an already disturbed immune system, resulting in liver disease deterioration. The liver fulfills an important position in the innate immune system, holding several populations of innate immune cells including Kupffer cells, neutrophils, mast cells and innate-like lymphocytes. Apart from these classical immune cells, also liver sinusoidal endothelial cells and hepatocytes possess important immunogenic properties. Indeed, complement factors, acute phase proteins and extracellular vesicles allow an extrahepatic response through the whole organism (Cai et al. 2019). More specifically, circulating mucosal-associated invariant T (MAIT) cells, important for anti-bacterial and viral defense *inter alia* in the liver (Jeffery et al. 2016), are reduced in patients with alcoholic or MAFLD-related cirrhosis, while they accumulate in liver fibrotic septa (Hegde et al. 2018). Therefore, more universal mechanisms whether or not additional to specifically disturbed pathways, could lay at the basis of pathogen-related MAFLD progression and vice versa.

The role of adaptive immunity in NASH is an active field of research. Oxidative stress-derived epitopes may be presented to CD4+ T-helper cells, promoting cytotoxic CD8+ T cell responses and B cell maturation resulting in secretion of anti-oxidative stress-derived epitope IgGs (Sutti and Albano 2020). Oxidative stress is an unspecific response to a variety of causes. Therefore, we hypothesize that infections causing tissue damage and profound inflammatory responses, could potentiate existing NASH by triggering subsequent sterile inflammation (Binder et al. 2016). Further studies are, however, warranted to elucidate the roles of specific pathogens within the multifactorial nature of MAFLD.

Acknowledgements This work was funded by grants of Research Foundation Flanders (1S10518N, 12H2216N, 1S73019N and G042019N), Onderzoeksrraad Vrije Universiteit Brussel and the Research Chair Mireille Aerens for the development Alternatives to Animal Testing.

Declarations

Conflict of interest The authors declare that they have no conflict of interest.

References

- Abu-Shanab A, Quigley EMM (2010) The role of the gut microbiota in nonalcoholic fatty liver disease. *Nat Rev Gastroenterol Hepatol* 7:691–701. <https://doi.org/10.1038/nrgastro.2010.172>
- Adinolfi LE, Gambardella M, Andreana A et al (2001) Steatosis accelerates the progression of liver damage of chronic hepatitis C patients and correlates with specific HCV genotype and visceral obesity. *Hepatology* 33:1358–1364. <https://doi.org/10.1053/jhep.2001.24432>
- Adinolfi LE, Rinaldi L, Guerrero B et al (2016) NAFLD and NASH in HCV infection: prevalence and significance in hepatic and extrahepatic manifestations. *Int J Mol Sci* 17:1–12. <https://doi.org/10.3390/ijms17060803>
- Alakhali MS, Al-Maweri SA, Al-Shamiri HM et al (2018) The potential association between periodontitis and non-alcoholic fatty liver disease: a systematic review. *Clin Oral Investig* 22:2965–2974. <https://doi.org/10.1007/s00784-018-2726-1>
- Alazawi W, Bernabe E, Tai D et al (2017) Periodontitis is associated with significant hepatic fibrosis in patients with non-alcoholic fatty liver disease. *PLoS ONE* 12:1–13. <https://doi.org/10.1371/journal.pone.0185902>
- Al-Qahtani AA, Lyroni K, Aznaourova M et al (2017) Middle east respiratory syndrome corona virus spike glycoprotein suppresses macrophage responses via DPP4-mediated induction of IRAK-M and PPAR γ . *Oncotarget* 8:9053–9066. <https://doi.org/10.18632/oncotarget.14754>
- Alsatie M, Pandya P, Chalasani NP (2008) Insulin resistance, hepatitis C, and liver transplantation. *Liver Transplant* 14:136–137
- Ando T, Ishikawa T, Takagi T et al (2013) Impact of *Helicobacter pylori* eradication on circulating adiponectin in humans. *Helicobacter* 18:158–164. <https://doi.org/10.1111/hel.12028>
- Arora K, Program B, Arbor A (2015) *Aggregatibacter actinomycetemcomitans*, a potent immunoregulator of the periodontal host defense system and alveolar bone homeostasis. *Mol Oral Microbiol* 31:165–187. <https://doi.org/10.1007/128>
- Assante G, Williams R, Youngson NA (2020) Is the increased risk for MAFLD patients to develop severe COVID-19 linked to perturbation of the gut-liver axis? *J Hepatol* 77:487–488. <https://doi.org/10.1016/j.jhep.2020.05.051>
- Asselah T, Rubbia-Brandt L, Marcellin P, Negro F (2006) Steatosis in chronic hepatitis C: why does it really matter? *Gut* 55:123–130. <https://doi.org/10.1136/gut.2005.069757>
- Aye KS, Charngkaew K, Win N et al (2014) Pathologic highlights of dengue hemorrhagic fever in 13 autopsy cases from Myanmar. *Hum Pathol* 45:1221–1233. <https://doi.org/10.1016/j.humpath.2014.01.022>
- Bahekar AA, Singh S, Saha S et al (2007) The prevalence and incidence of coronary heart disease is significantly increased in periodontitis: a meta-analysis. *Am Heart J* 154:830–837. <https://doi.org/10.1016/j.ahj.2007.06.037>

- Baumeier C, Schlüter L, Saussenthaler S et al (2017) Elevated hepatic DPP4 activity promotes insulin resistance and non-alcoholic fatty liver disease. *Mol Metab* 6:1254–1263
- Begum F, Das S, Mukherjee D et al (2019) Insight into the tropism of dengue virus in humans. *Viruses* 11:1136. <https://doi.org/10.3390/v11121136>
- Beltran PMJ, Cristea IM (2014) The life cycle and pathogenesis of human cytomegalovirus infection: lessons from proteomics. *Expert Rev Proteomics* 11:697–711. <https://doi.org/10.1586/14789450.2014.971116.The>
- Binder CJ, Papac-Milicevic N, Witztum JL (2016) Innate sensing of oxidation-specific epitopes in health and disease. *Nat Rev Immunol* 16:485–497. <https://doi.org/10.1038/nri.2016.63>
- Boeckmans J, Natale A, Buyl K et al (2018) Human-based systems: mechanistic NASH modelling just around the corner? *Pharmacol Res* 134:257–267. <https://doi.org/10.1016/j.phrs.2018.06.029>
- Boeckmans J, Natale A, Rombaut M et al (2020a) Anti-NASH drug development hitches a lift on PPAR agonism. *Cells* 9:1–20. <https://doi.org/10.3390/cells9010037>
- Boeckmans J, Rodrigues RM, Demuys T et al (2020b) COVID-19 and drug-induced liver injury: a problem of plenty or a petty point? *Arch Toxicol* 94:1367–1369. <https://doi.org/10.1007/s00204-020-02734-1>
- Bolukbas FF, Bolukbas C, Zeyrek F et al (2005) High rate of seropositivity of *Chlamydia pneumoniae* IgA in male patients with nonalcoholic steatohepatitis. *Dig Dis Sci* 50:1141–1145. <https://doi.org/10.1007/s10620-005-2721-7>
- Brown LM (2000) *Helicobacter pylori*: epidemiology and routes of transmission. *Epidemiol Rev* 22:283–297. <https://doi.org/10.1093/oxfordjournals.epirev.a018040>
- Brown AJ (2008) Viral hepatitis and fatty liver disease: how an unwelcome guest makes pâté of the host. *Biochem J* 416:15–17. <https://doi.org/10.1042/BJ20081916>
- Bruno R, Galastri S, Sacchi P et al (2010) Gp120 modulates the biology of human hepatic stellate cells: a link between HIV infection and liver fibrogenesis. *Gut* 59:513–520. <https://doi.org/10.1136/gut.2008.163287>
- Bugianesi E, Marchesini G, Gentilcore E et al (2006) Fibrosis in genotype 3 chronic hepatitis C and nonalcoholic fatty liver disease: role of insulin resistance and hepatic steatosis. *Hepatology* 44:1648–1655. <https://doi.org/10.1002/hep.21429>
- Buzzetti E, Pinzani M, Tsochatzis EA (2016) The multiple-hit pathogenesis of non-alcoholic fatty liver disease (NAFLD). *Metabolism* 65:1038–1048. <https://doi.org/10.1016/j.metabol.2015.12.012>
- Byrd AL, Segre JA (2016) Adapting Koch's postulates: criteria for disease causation must take microbial interactions into account. *Science* 351:224–226. <https://doi.org/10.1126/science.aad6753>
- Cabalén ME, Cabral MF, Sanmarco LM et al (2016) Chronic trypanosoma cruzi infection potentiates adipose tissue macrophage polarization toward an anti-inflammatory M2 phenotype and contributes to diabetes progression in a diet-induced obesity model. *Oncotarget* 7:13400–13415. <https://doi.org/10.18632/oncotarget.7630>
- Cai J, Zhang XJ, Li H (2019) The role of innate immune cells in non-alcoholic steatohepatitis. *Hepatology* 70:1026–1037. <https://doi.org/10.1002/hep.30506>
- Cannon MJ, Schmid DS, Hyde TB (2010) Review of cytomegalovirus seroprevalence and demographic characteristics associated with infection. *Rev Med Virol* 20:202–213. <https://doi.org/10.1002/rmv>
- Carey IM, Critchley JA, Dewilde S et al (2018) Risk of infection in type 1 and type 2 diabetes compared with the general population: a matched cohort study. *Diabetes Care* 41:513–521. <https://doi.org/10.2337/dc17-2131>
- Castrillon CA, Hincapie JP, Yepes FL et al (2015) Occurrence of red complex microorganisms and *Aggregatibacter actinomycetemcomitans* in patients with diabetes. *J Investig Clin Dent* 6:25–31. <https://doi.org/10.1111/jicd.12051>
- Chamroonkul N, Bansal MB (2019) HIV and the liver. *Nat Rev Gastroenterol Hepatol* 16:1–2. <https://doi.org/10.1038/s41575-018-0085-7>
- Chan A, Patel K, Naggie S (2017) Genotype 3 infection—the last stand of hepatitis C virus Austin. *Drugs* 77:131–144. <https://doi.org/10.1016/j.physbeh.2017.03.040>
- Chatrath H, Vuppalanchi R, Chalasani N (2012) Dyslipidemia in patients with nonalcoholic fatty liver disease. *Semin Liver Dis* 32:22–29. <https://doi.org/10.1055/s-0032-1306423>
- Chen Y, Lu J, Huang Y et al (2013) Association of previous schistosoma infection with diabetes and metabolic syndrome: a cross-sectional study in rural China. *J Clin Endocrinol Metab* 98:283–287. <https://doi.org/10.1210/jc.2012-2517>
- Chen X, Zhang Z, Li H et al (2020) Endogenous ethanol produced by intestinal bacteria induces mitochondrial dysfunction in non-alcoholic fatty liver disease. *J Gastroenterol Hepatol* 35:2009–2019. <https://doi.org/10.1111/jgh.15027>
- Cheng Y, Dharancy S, Malapel M, Desreumaux P (2005) Hepatitis C virus infection down-regulates the expression of peroxisome proliferator-activated receptor α and carnitine palmitoyl acyl-CoA transferase 1A. *World J Gastroenterol* 11:7591–7596. <https://doi.org/10.3748/wjg.v11.i48.7591>
- Cheng JJ, Li JR, Huang MH et al (2016) CD36 is a co-receptor for hepatitis C virus E1 protein attachment. *Sci Rep* 6:21808. <https://doi.org/10.1038/srep21808>
- Cheung O, Sanyal AJ (2008) Hepatitis C infection and nonalcoholic fatty liver disease. *Clin Liver Dis* 12:573–585. <https://doi.org/10.1016/j.cld.2008.03.005>
- Choi HSJ, Brouwer WP, Zanjir WMR et al (2020) Nonalcoholic steatohepatitis is associated with liver-related outcomes and all-cause mortality in chronic hepatitis B. *Hepatology* 71:539–548. <https://doi.org/10.1002/hep.30857>
- Combs JA, Norton EB, Saifudeen ZR et al (2019) Human cytomegalovirus alters host cell mitochondrial function during acute infection. *J Virol* 94:e01183–19. <https://doi.org/10.1128/jvi.01183-19>
- Cover TL, Blaser MJ (2009) *Helicobacter pylori* in health and disease. *Gastroenterology* 136:1863–1873. <https://doi.org/10.1053/j.gastro.2009.01.073.Helicobacter>
- Cui HJ, Tong XL, Li P et al (2004) Serum hepatic enzyme manifestations in patients with severe acute respiratory syndrome: retrospective analysis. *World J Gastroenterol* 10:1652–1655. <https://doi.org/10.3748/wjg.v10.i11.1652>
- da Silva Filomeno CE, Costa-Silva M, Corrêa CL et al (2020) The acute schistosomiasis mansoni ameliorates metabolic syndrome in the C57BL/6 mouse model. *Exp Parasitol* 212:107889. <https://doi.org/10.1016/j.exppara.2020.107889>
- Danquah I, Bedu-Addo G, Mockenhaupt FP (2010) Type 2 diabetes mellitus and increased risk for malaria infection. *Emerg Infect Dis* 16:1601–1604. <https://doi.org/10.3201/eid1610.100399>
- Dash NR, Khoder G, Nada AM, Al Batineh MT (2019) Exploring the impact of *Helicobacter pylori* on gut microbiome composition. *PLoS ONE* 14:1–13. <https://doi.org/10.1371/journal.pone.0218274>
- Davern TJ, Chalasani N, Fontana RJ et al (2011) Acute hepatitis E infection accounts for some cases of suspected drug-induced liver injury. *Gastroenterology* 141:1665–1672.e9. <https://doi.org/10.1053/j.gastro.2011.07.051>
- de Silva AP, Kasturiratne A, Liyanage DLMN et al (2008) Is past exposure to hepatitis A protective against progressive fibrosis in non-alcoholic fatty liver disease? *Liver Int* 28:147–149. <https://doi.org/10.1111/j.1478-3231.2007.01605.x>

- De Smet V, Verhulst S, van Grunsven LA (2020) Single cell RNA sequencing analysis did not predict hepatocyte infection by SARS-CoV-2. *J Hepatol* 73:993–995
- Dean M, Carrington M, Winkler C et al (1996) Genetic restriction of HIV-1 infection and progression to AIDS by a deletion allele of the *CKR5* structural gene. *Science* 273:1856–1862. <https://doi.org/10.1126/science.273.5283.1856>
- Del Cornò M, Cappon A, Donninelli G et al (2016) HIV-1 gp120 signaling through TLR4 modulates innate immune activation in human macrophages and the biology of hepatic stellate cells. *J Leukoc Biol* 100:599–606. <https://doi.org/10.1189/jlb.4a1215-534r>
- Dharancy S, Malapel M, Perlemuter G et al (2005) Impaired expression of the peroxisome proliferator-activated receptor alpha during hepatitis C virus infection. *Gastroenterology* 128:334–342. <https://doi.org/10.1053/j.gastro.2004.11.016>
- Di Pietro M, Filardo S, Romano S, Sessa R (2019) *Chlamydia trachomatis* and *Chlamydia pneumoniae* interaction with the host: latest advances and future prospective. *Microorganisms* 7:140. <https://doi.org/10.3390/microorganisms7050140>
- Dongiovanni P, Meroni M, Longo M, Fracanzani AL (2020) MAFLD in COVID-19 patients: an insidious enemy. *Expert Rev Gastroenterol Hepatol* 00:1–6. <https://doi.org/10.1080/17474124.2020.1801417>
- Eilami O, Nazari A, Dousti M et al (2019) Investigation of HIV/AIDS prevalence and associated risk factors among female sex workers from 2010 to 2017: a meta-analysis study. *HIV/AIDS Res Palliat Care* 11:105–117. <https://doi.org/10.2147/HIV.S196085>
- Eshraghian A, Hashemi SA, Jahromi AH et al (2009) *Helicobacter pylori* infection as a risk factor for insulin resistance. *Dig Dis Sci* 54:1966–1970. <https://doi.org/10.1007/s10620-008-0557-7>
- Falck G, Gnärpe J, Hansson LO et al (2002) Comparison of individuals with and without specific IgA antibodies to *Chlamydia pneumoniae*: respiratory morbidity and the metabolic syndrome. *Chest* 122:1587–1593. <https://doi.org/10.1378/chest.122.5.1587>
- Fang L, Karakioulakis G, Roth M (2020) Are patients with hypertension and diabetes mellitus at increased risk for COVID-19 infection? *Lancet Respir Med* 2600:30116–30118. [https://doi.org/10.1016/s2213-2600\(20\)30116-8](https://doi.org/10.1016/s2213-2600(20)30116-8)
- Feeney ER, Mallon PWG (2010) Impact of mitochondrial toxicity of HIV-1 antiretroviral drugs on lipodystrophy and metabolic dysregulation. *Curr Pharm Des* 16:3339–3351
- Feng Y, Broder CC, Kennedy PA, Berger EA (1996) HIV-1 entry cofactor: functional cDNA cloning of a seven-transmembrane G protein-coupled receptor. *Science* 50:572
- Finck BN (2018) Targeting metabolism, insulin resistance, and diabetes to treat nonalcoholic steatohepatitis. *Diabetes* 67:2485–2493. <https://doi.org/10.2337/dbi18-0024>
- Fleck-Derderian S, McClellan W, Wojcicki JM (2017) The association between cytomegalovirus infection, obesity, and metabolic syndrome in U.S. adult females. *Obesity* 25:626–633. <https://doi.org/10.1002/oby.21764>
- Flegr J, Prandota J, Sovičková M, Israili ZH (2014) Toxoplasmosis—a global threat. Correlation of latent toxoplasmosis with specific disease burden in a set of 88 countries. *PLoS One* 9. <https://doi.org/10.1371/journal.pone.0090203>
- Fletcher JG, Guimaraes LS, Fidler JL, Kamath PS (2008) The hepatitis C virus-associated dysmetabolic syndrome. *Hepatology* 48:1018–1019. <https://doi.org/10.1002/hep.22477>
- Florimond A, Chouteau P, Bruscella P et al (2015) Human hepatic stellate cells are not permissive for hepatitis C virus entry and replication. *Gut* 64:957–965. <https://doi.org/10.1136/gutjnl-2013-305634>
- Francq S, Verrijken A, Caron S et al (2015) PPAR- α gene expression correlates with severity and histological treatment response in patients with non-alcoholic steatohepatitis. *J Hepatol* 63:164–173. <https://doi.org/10.1016/j.jhep.2015.02.019>
- Frias M, López-López P, Rivero A, Rivero-Juarez A (2018) Role of hepatitis e virus infection in acute-on-chronic liver failure. *Biomed Res Int*. <https://doi.org/10.1155/2018/9098535>
- Ganesan M, Poluektova LY, Kharbanda KK, Osna NA (2018) Liver as a target of human immunodeficiency virus infection. *World J Gastroenterol* 24:4728–4737. <https://doi.org/10.3748/wjg.v24.i42.4728>
- Ganz M, Szabo G (2013) Immune and inflammatory pathways in NASH. *Hepatol Int* 7:771–781. <https://doi.org/10.1007/s12072-013-9468-6>
- Gao B, Tsukamoto H (2016) Inflammation in alcoholic and non-alcoholic fatty liver disease: friend or foe? *Gastroenterology* 150:1704–1709. <https://doi.org/10.1053/j.gastro.2016.01.025>
- Gao F, Zheng KI, Wang XB et al (2020) Metabolic associated fatty liver disease increases coronavirus disease 2019 disease severity in nondiabetic patients. *J Gastroenterol Hepatol*. <https://doi.org/10.1111/jgh.15112>
- Gastaminza P, Dryden KA, Boyd B et al (2010) Ultrastructural and biophysical characterization of hepatitis C Virus particles produced in cell culture. *J Virol* 84:10999–11009. <https://doi.org/10.1128/jvi.00526-10>
- Giannelli V, Di GV, Iebba V et al (2014) Microbiota and the gut-liver axis: bacterial translocation, inflammation and infection in cirrhosis. *World J Gastroenterol* 20:16795–16810. <https://doi.org/10.3748/wjg.v20.i45.16795>
- Giovanna F, Bortolotti F, Francesco D (2008) Natural history of chronic hepatitis B: special emphasis on disease progression and prognostic factors. *J Hepatol* 48:335–352. <https://doi.org/10.1016/j.jhep.2007.11.011>
- Gordon DA, Jamil H (2000) Progress towards understanding the role of microsomal triglyceride transfer protein in apolipoprotein-B lipoprotein assembly. *Biochim Biophys Acta Mol Cell Biol Lipids* 1486:72–83. [https://doi.org/10.1016/S1388-1981\(00\)00049-4](https://doi.org/10.1016/S1388-1981(00)00049-4)
- Goustin AS, Derar N, Abou-Samra AB (2013) Ahsg-fetuin blocks the metabolic arm of insulin action through its interaction with the 95-kD β -subunit of the insulin receptor. *Cell Signal* 25:981–988. <https://doi.org/10.1016/j.cellsig.2012.12.011>
- Guaraldi G, Maurice JB, Marzolini C et al (2020) New drugs for non-alcoholic steatohepatitis and HIV infection: great expectations with a great absent? *Hepatology*. <https://doi.org/10.1002/hep.31177>
- Guentsch A, Puklo M, Preshaw PM et al (2009) Neutrophils in chronic and aggressive periodontitis in interaction with *Porphyromonas gingivalis* and *Aggregatibacter actinomycetemcomitans*. *J Periodontol Res* 44:368–377. <https://doi.org/10.1111/j.1600-0765.2008.01113.x>
- Haas JT, Vonghia L, Mogilenko DA et al (2019) Transcriptional network analysis implicates altered hepatic immune function in NASH development and resolution. *Nat Metab* 1:604–614. <https://doi.org/10.1038/s42255-019-0076-1>
- Hamming I, Timens W, Bulthuis MLC et al (2004) Tissue distribution of ACE2 protein, the functional receptor for SARS coronavirus. A first step in understanding SARS pathogenesis. *J Pathol* 203:631–637. <https://doi.org/10.1002/path.1570>
- Hegde P, Weiss E, Paradis V et al (2018) Mucosal-associated invariant T cells are a profibrogenic immune cell population in the liver. *Nat Commun* 9:1–12. <https://doi.org/10.1038/s41467-018-04450-y>
- Herker E, Harris C, Hernandez C et al (2010) Efficient hepatitis C virus particle formation requires diacylglycerol acyltransferase-1. *Nat Med* 16:1295–1298. <https://doi.org/10.1038/nm.2238>

- Hoffmann M, Kleine-Weber H, Schroeder S et al (2020) SARS-CoV-2 cell entry depends on ACE2 and TMPRSS2 and is blocked by a clinically proven protease inhibitor. *Cell* 181:271–280.e8. <https://doi.org/10.1016/j.cell.2020.02.052>
- Huang J, Zhang H, Liu S et al (2018) Is *Toxoplasma gondii* infection correlated with nonalcoholic fatty liver disease?—a population-based study. *BMC Infect Dis* 18:4–9. <https://doi.org/10.1186/s12879-018-3547-1>
- Huang C, Wang Y, Li X et al (2020) Clinical features of patients infected with 2019 novel coronavirus in Wuhan, China. *Lancet* 395:497–506. [https://doi.org/10.1016/S0140-6736\(20\)30183-5](https://doi.org/10.1016/S0140-6736(20)30183-5)
- Huerre MR, Trong Lan N, Marianneau P et al (2001) Liver histopathology and biological correlates in five cases of fatal dengue fever in Vietnamese children. *Virchows Arch* 438:107–115. <https://doi.org/10.1007/s004280000329>
- Huy NT, Van Giang T, Thuy DHD et al (2013) Factors associated with dengue shock syndrome: a systematic review and meta-analysis. *PLoS Negl Trop Dis* 7:e2412. <https://doi.org/10.1371/journal.pntd.0002412>
- Hyman CL, Roblin PM, Gaydos CA et al (1995) Prevalence of asymptomatic nasopharyngeal carriage of *Chlamydia pneumoniae* in subjectively healthy adults: assessment by polymerase chain reaction-enzyme immunoassay and culture. *Clin Infect Dis* 20:1174–1178
- Iwasaki T, Hirose A, Azuma T et al (2018) Correlation between ultrasound-diagnosed non-alcoholic fatty liver and periodontal condition in a cross-sectional study in Japan. *Sci Rep* 8:1–7. <https://doi.org/10.1038/s41598-018-25857-z>
- Jackel-Cram C, Babiuk LA, Liu Q (2007) Up-regulation of fatty acid synthase promoter by hepatitis C virus core protein: genotype-3a core has a stronger effect than genotype-1b core. *J Hepatol* 46:999–1008. <https://doi.org/10.1016/j.jhep.2006.10.019>
- Jan CF, Chen CJ, Chiu YH et al (2006) A population-based study investigating the association between metabolic syndrome and hepatitis B/C infection (Keelung Community-based Integrated Screening Study No. 10). *Int J Obes* 30:794–799. <https://doi.org/10.1038/sj.ijo.0803204>
- Jeffery HC, Van Wilgenburg B, Kurioka A et al (2016) Biliary epithelium and liver B cells exposed to bacteria activate intrahepatic MAIT cells through MR1. *J Hepatol* 64:1118–1127. <https://doi.org/10.1016/j.jhep.2015.12.017>
- Ji D, Qin E, Xu J et al (2020) Implication of non-alcoholic fatty liver diseases (NAFLD) in patients with COVID-19: a preliminary analysis. *J Hepatol*. <https://doi.org/10.1016/j.jhep.2020.03.044>
- Joo EJ, Chang Y, Yeom JS et al (2019) Chronic hepatitis B virus infection and risk of dyslipidaemia: a cohort study. *J Viral Hepat* 26:162–169. <https://doi.org/10.1111/jvh.13014>
- Kahraman A, Sowa JP, Schlattjan M et al (2013) Fetuin—a mRNA expression is elevated in NASH compared with NAFL patients. *Clin Sci* 125:391–400. <https://doi.org/10.1042/CS20120542>
- Kawaguchi T, Yoshida T, Harada M et al (2004) Hepatitis C virus down-regulates insulin receptor substrates 1 and 2 through up-regulation of suppressor of cytokine signaling 3. *Am J Pathol* 165:1499–1508. [https://doi.org/10.1016/S0002-9440\(10\)63408-6](https://doi.org/10.1016/S0002-9440(10)63408-6)
- Kawaguchi T, Ide T, Taniguchi E et al (2007) Clearance of HCV improves insulin resistance, beta-cell function, and hepatic expression of insulin receptor substrate 1 and 2. *Am J Gastroenterol* 102:570–576. <https://doi.org/10.1111/j.1572-0241.2006.01038.x>
- Khuroo MS, Sofi AA (2020) The discovery of hepatitis viruses: agents and disease. *J Clin Exp Hepatol*. <https://doi.org/10.1016/j.jceh.2020.04.006>
- Kleiner DE, Brunt EM, Van Natta M et al (2005) Design and validation of a histological scoring system for nonalcoholic fatty liver disease. *Hepatology* 41:1313–1321. <https://doi.org/10.1002/hep.20701>
- Kluck GEG, Wendt CHC, Eustaquio do Imperio G, et al (2019) Plasmodium infection induces dyslipidemia and a hepatic lipogenic state in the host through the inhibition of the AMPK-ACC pathway. *Sci Rep* 9:1–13. <https://doi.org/10.1038/s41598-019-51193-x>
- Knobler H, Schattner A (2005) TNF- α , chronic hepatitis C and diabetes: a novel triad. *QJM Mon J Assoc Physicians* 98:1–6. <https://doi.org/10.1093/qjmed/hci001>
- Knobler H, Zhornicky T, Sandler A et al (2003) Tumor necrosis factor- α -induced insulin resistance may mediate the hepatitis C virus-diabetes association. *Am J Gastroenterol* 98:2751–2756. <https://doi.org/10.1016/j.amjgastroenterol.2003.06.002>
- Komazaki R, Katagiri S, Takahashi H et al (2017) Periodontal pathogenic bacteria, *Aggregatibacter actinomycetemcomitans* affect non-alcoholic fatty liver disease by altering gut microbiota and glucose metabolism. *Sci Rep* 7:1–14. <https://doi.org/10.1038/s41598-017-14260-9>
- Kreling A, Cinthia M, Barbisan C et al (2020) Higher frequency of hepatic steatosis at CT among COVID-19—positive patients. *Abdom Radiol*. <https://doi.org/10.1007/s00261-020-02648-7>
- Kuba K, Imai Y, Rao S et al (2005) A crucial role of angiotensin converting enzyme 2 (ACE2) in SARS coronavirus-induced lung injury. *Nat Med* 11:875–879. <https://doi.org/10.1038/nm1267>
- Kularatne SAM, Imbulpitaya IVB, Abeysekera RA et al (2014) Extensive haemorrhagic necrosis of liver is an unpredictable fatal complication in dengue infection: a postmortem study. *BMC Infect Dis* 14:1–10. <https://doi.org/10.1186/1471-2334-14-141>
- Kumar D, Farrell GC, Fung C, George J (2002) Hepatitis C virus genotype 3 is cytopathic to hepatocytes: reversal of hepatic steatosis after sustained therapeutic response. *Hepatology* 36:1266–1272. <https://doi.org/10.1053/jhep.2002.36370>
- Lang S, Demir M, Martin A et al (2020) Intestinal virome signature associated with severity of nonalcoholic fatty liver disease. *Gastroenterology*. <https://doi.org/10.1053/j.gastro.2020.07.005>
- Laurila A, Bloigu A, Näyhä S et al (1997) *Chlamydia pneumoniae* antibodies and serum lipids in Finnish men: cross sectional study. *Br Med J* 314:1456–1457. <https://doi.org/10.1136/bmj.314.7092.1441>
- Lee C (2018) Therapeutic modulation of virus-induced oxidative stress via the Nrf2-dependent antioxidative pathway. *Oxid Med Cell Longev*. <https://doi.org/10.1155/2018/6208067>
- Lee J, Koh K, Kim YE et al (2013) Upregulation of Nrf2 expression by human cytomegalovirus infection protects host cells from oxidative stress. *J Gen Virol* 94:1658–1668. <https://doi.org/10.1099/vir.0.052142-0>
- Lefkowitz JH, Haythe JH, Regent N (2002) Kupffer cell aggregation and perivenular distribution in steatohepatitis. *Mod Pathol* 15:699–704. <https://doi.org/10.1097/01.MP.0000019579.30842.96>
- Leinonen M, Saikku P (1999) Interaction of *Chlamydia pneumoniae* infection with other risk factors of atherosclerosis. *Am Heart J* 138:15–17. [https://doi.org/10.1016/s0002-8703\(99\)70286-3](https://doi.org/10.1016/s0002-8703(99)70286-3)
- Lenggenhager D, Pawel S, Honcharova-Biletska H et al (2020) The histologic presentation of hepatitis E reflects patients' immune status and pre-existing liver condition. *Mod Pathol*. <https://doi.org/10.1038/s41379-020-0593-1>
- Lhomme S, Marion O, Abravanel F et al (2020) Clinical manifestations, pathogenesis and treatment of hepatitis E virus infections. *J Clin Med* 9:331. <https://doi.org/10.3390/jcm9020331>
- Liang TJ (2009) Hepatitis B: the virus and disease. *Hepatology* 49:s13–s21. <https://doi.org/10.1002/hep.22881>. Hepatitis
- Lin KY, Chen GJ, Lee YL et al (2017) Hepatitis A virus infection and hepatitis A vaccination in human immunodeficiency virus-positive patients: a review. *World J Gastroenterol* 23:3589–3606. <https://doi.org/10.3748/wjg.v23.i20.3589>
- Liu R, Liu Q, He Y et al (2019) Association between *Helicobacter pylori* infection and nonalcoholic fatty liver: a meta-analysis.

- Medicine (baltimore) 98:e17781. <https://doi.org/10.1097/MD.000000000017781>
- Low H, Hoang A, Pushkarsky T et al (2019) HIV disease, metabolic dysfunction and atherosclerosis: a three year prospective study. *PLoS ONE* 14:1–19. <https://doi.org/10.1371/journal.pone.0215620>
- Lucchetti BFC, Boaretto N, Lopes FNC et al (2019) Metabolic syndrome agravates cardiovascular, oxidative and inflammatory dysfunction during the acute phase of *Trypanosoma cruzi* infection in mice. *Sci Rep* 9:1–16. <https://doi.org/10.1038/s41598-019-55363-9>
- Macías J, Pineda JA, Real LM (2017) Non-alcoholic fatty liver disease in HIV infection. *AIDS Rev* 19:35–46
- MacLachlan JH, Cowie BC (2015) Hepatitis B virus epidemiology. *Cold Spring Harb Perspect Med* 5:1–12. <https://doi.org/10.1101/cshperspect.a021410>
- Manco M, Marcellini M, Giannone G, Nobili V (2007) Correlation of serum TNF- α levels and histologic liver injury scores in pediatric nonalcoholic fatty liver disease. *Am J Clin Pathol* 127:954–960. <https://doi.org/10.1309/6VJ4DWGYDU0XYJ8Q>
- Mantovani A, Turino T, Altomari A et al (2019) Association between *Helicobacter pylori* infection and risk of nonalcoholic fatty liver disease: an updated meta-analysis. *Metabolism* 96:56–65. <https://doi.org/10.1016/j.metabol.2019.04.012>
- Marangoni A, Fiorino E, Gilardi F et al (2015) *Chlamydia pneumoniae* acute liver infection affects hepatic cholesterol and triglyceride metabolism in mice. *Atherosclerosis* 241:471–479. <https://doi.org/10.1016/j.atherosclerosis.2015.05.023>
- Marra F, Svegliati-baroni G (2017) Lipotoxicity and the gut-liver axis in NASH pathogenesis. *J Hepatol* 68:280–295. <https://doi.org/10.1016/j.jhep.2017.11.014>
- Martina BEE, Koraka P, Osterhaus ADME (2009) Dengue virus pathogenesis: an integrated view. *Clin Microbiol Rev* 22:564–581. <https://doi.org/10.1128/CMR.00035-09>
- Mehta SH, Brancati FL, Strathdee SA et al (2003) Hepatitis C virus infection and incident type 2 diabetes. *Hepatology* 38:50–56. <https://doi.org/10.1053/jhep.2003.50291>
- Mendez OA, Koshy AA (2017) *Toxoplasma gondii*: entry, association, and physiological influence on the central nervous system. *PLoS Pathog* 13:1–12. <https://doi.org/10.1371/journal.ppat.1006351>
- Miao Z, Xie Z, Miao J et al (2017) Regulated entry of hepatitis C virus into hepatocytes. *Viruses* 9:1–19. <https://doi.org/10.3390/v9050100>
- Milner DA (2018) Malaria pathogenesis. *Cold Spring Harb Perspect Med* 8:1–11. <https://doi.org/10.1101/cshperspect.a025569>
- Minemura M, Tajiri K, Shimizu Y (2014) Liver involvement in systemic infection. *World J Hepatol* 6:632–642. <https://doi.org/10.4254/wjh.v6.i9.632>
- Miquilena-Colina ME, Lima-Cabello E, Sánchez-Campos S et al (2011) Hepatic fatty acid translocase CD36 upregulation is associated with insulin resistance, hyperinsulinaemia and increased steatosis in non-alcoholic steatohepatitis and chronic hepatitis C. *Gut* 60:1394–1402. <https://doi.org/10.1136/gut.2010.222844>
- Mosoian A, Zhang L, Hong F et al (2017) Frontline science: HIV infection of Kupffer cells results in an amplified proinflammatory response to LPS. *J Leukoc Biol* 101:1083–1090. <https://doi.org/10.1189/jlb.3hi0516-242r>
- Moucari R, Asselah T, Cazals-Hatem D et al (2008) Insulin resistance in chronic hepatitis C: association with genotypes 1 and 4, serum HCV RNA level, and liver fibrosis. *Gastroenterology* 134:416–423. <https://doi.org/10.1053/j.gastro.2007.11.010>
- Muller LMAJ, Gorter KJ, Hak E et al (2005) Increased risk of common infections in patients with type 1 and type 2 diabetes mellitus. *Clin Infect Dis* 41:281–288. <https://doi.org/10.1086/431587>
- Nagaya T, Tanaka N, Suzuki T et al (2010) Down-regulation of SREBP-1c is associated with the development of burned-out NASH. *J Hepatol* 53:724–731. <https://doi.org/10.1016/j.jhep.2010.04.033>
- Nakahara T, Hyogo H, Ono A et al (2018) Involvement of *Porphyromonas gingivalis* in the progression of non-alcoholic fatty liver disease. *J Gastroenterol* 53:269–280. <https://doi.org/10.1007/s00535-017-1368-4>
- Nelwan ML (2019) Schistosomiasis: life cycle, diagnosis, and control. *Curr Ther Res Clin Exp* 91:5–9. <https://doi.org/10.1016/j.curtheres.2019.06.001>
- Ng DL, Al HF, Keating MK et al (2020) Clinicopathologic, immunohistochemical, and ultrastructural findings of a fatal case of middle east respiratory syndrome coronavirus infection in the United Arab Emirates, April 2014. *Am J Pathol* 186:652–658
- Ni Y, Lempp FA, Mehrle S et al (2014) Hepatitis B and D viruses exploit sodium taurocholate co-transporting polypeptide for species-specific entry into hepatocytes. *Gastroenterology* 146:1–14. <https://doi.org/10.1053/j.gastro.2013.12.024>
- Niegawa T, Kimitaka Takitani RT, Ishiro M, Kuroyanagi Y, Keisuke Okasora YM et al (2018) Effects of *Helicobacter pylori* eradication on serum lipid levels. *J Clin Biochem Nutr* 62:179–186. <https://doi.org/10.3164/jcbs.17>
- Nseir W, Taha H, Khateeb J et al (2011) Fatty liver is associated with recurrent bacterial infections independent of metabolic syndrome. *Dig Dis Sci* 56:3328–3334. <https://doi.org/10.1007/s10620-011-1736-5>
- Onofrio LI, Arocena AR, Paroli AF et al (2015) *Trypanosoma cruzi* infection is a potent risk factor for non-alcoholic steatohepatitis enhancing local and systemic inflammation associated with strong oxidative stress and metabolic disorders. *PLoS Negl Trop Dis* 9:1–22. <https://doi.org/10.1371/journal.pntd.0003464>
- Otake K, Omoto S, Yamamoto T et al (2004) HIV-1 Nef protein in the nucleus influences adipogenesis as well as viral transcription through the peroxisome proliferator-activated receptors. *AIDS* 18:189–198. <https://doi.org/10.1097/00002030-200401230-00007>
- Paczosa MK (2016) *Klebsiella pneumoniae*: going on the offense with a strong defense. *Microbiol Mol Biol Rev* 80:629–661. <https://doi.org/10.1128/MMBR.00078-15.Address>
- Paes MV, Lenzi HL, Nogueira ACM et al (2009) Hepatic damage associated with dengue-2 virus replication in liver cells of BALB/c mice. *Lab Invest* 89:1140–1151. <https://doi.org/10.1038/labinvest.2009.83>
- Paik JM, Henry L, De AL et al (2019) Mortality related to nonalcoholic fatty United States. *Hepatol Commun* 3:1459–1471. <https://doi.org/10.1002/hep4.1419>
- Pal D, Dasgupta S, Kundu R et al (2012) Fetuin-A acts as an endogenous ligand of TLR4 to promote lipid-induced insulin resistance. *Nat Med* 18:1279–1285. <https://doi.org/10.1038/nm.2851>
- Pan L, Huang P, Xie X et al (2020) Metabolic associated fatty liver disease increases the severity of COVID-19: a meta-analysis. *Dig Liver Dis* 53:153–157
- Papagianni M, Tziomalos K (2018) Non-alcoholic fatty liver disease in patients with HIV infection. *AIDS Rev* 20:171–173. <https://doi.org/10.24875/AIDSRev.18000008>
- Patel A, Harrison SA (2012) Hepatitis C virus infection and nonalcoholic steatohepatitis. *Gastroenterol Hepatol* 8:305–312
- Pawlotsky JM (2020) COVID-19 and the liver-related deaths to come. *Nat Rev Gastroenterol Hepatol*. <https://doi.org/10.1038/s41575-020-0328-2>
- Pérez-Chaparro PJ, Gonçalves C, Figueiredo LC et al (2014) Newly identified pathogens associated with periodontitis: a systematic review. *J Dent Res* 93:846–858. <https://doi.org/10.1177/0022034514542468>

- Petruzzello A, Marigliano S, Loquercio G et al (2016) Global epidemiology of hepatitis C virus infection: an up-date of the distribution and circulation of hepatitis C virus genotypes. *World J Gastroenterol* 22:7824–7840. <https://doi.org/10.3748/wjg.v22.i34.7824>
- Pihlstrom BL, Michalowicz BS, Johnson NW (2005) Periodontal diseases. *Lancet* 366:1809–1820. [https://doi.org/10.1016/S0140-6736\(05\)67728-8](https://doi.org/10.1016/S0140-6736(05)67728-8)
- Polyzos S, Kountouras J, Zavos C (2009) Nonalcoholic fatty liver disease: the pathogenetic roles of insulin resistance and adipocytokines. *Curr Mol Med* 9:299–314. <https://doi.org/10.2174/156652409787847191>
- Polyzos SA, Perakakis N, Mantzoros CS (2019) Fatty liver in lipodystrophy: a review with a focus on therapeutic perspectives of adiponectin and/or leptin replacement. *Metabolism* 96:66–82. <https://doi.org/10.1016/j.metabol.2019.05.001>
- Quaresma JAS, Barros VLRS, Pagliari C et al (2006) Revisiting the liver in human yellow fever: virus-induced apoptosis in hepatocytes associated with TGF- β , TNF- α and NK cells activity. *Virology* 345:22–30. <https://doi.org/10.1016/j.virol.2005.09.058>
- Quesada-Vázquez S, Aragonès G, Del Bas JM, Escoté X (2020) Diet, gut microbiota and non-alcoholic fatty liver disease: three parts of the same axis. *Cells* 9:176. <https://doi.org/10.3390/cells9010176>
- Reuling II, de Jong GM, Yap XZ et al (2018) Liver injury in uncomplicated malaria is an overlooked phenomenon: an observational study. *EBioMedicine* 36:131–139. <https://doi.org/10.1016/j.ebiom.2018.09.018>
- Riddle TM, Kuhel DG, Woollett LA et al (2001) HIV protease inhibitor induces fatty acid and sterol biosynthesis in liver and adipose tissues due to the accumulation of activated sterol regulatory element-binding proteins in the nucleus. *J Biol Chem* 276:37514–37519. <https://doi.org/10.1074/jbc.M104557200>
- Rocafort M, Noguera-Julian M, Rivera J et al (2019) Evolution of the gut microbiome following acute HIV-1 infection. *Microbiome* 7:1–17. <https://doi.org/10.1186/s40168-019-0687-5>
- Rochira V, Guaraldi G (2017) Growth hormone deficiency and human immunodeficiency virus. *Best Pract Res Clin Endocrinol Metab* 31:91–111. <https://doi.org/10.1016/j.beem.2017.02.006>
- Ryaboshapkina M, Hammar M (2017) Human hepatic gene expression signature of non-alcoholic fatty liver disease progression, a meta-analysis. *Sci Rep* 7:1–12. <https://doi.org/10.1038/s41598-017-10930-w>
- Salvi GE, Carollo-Bittel B, Lang NP (2008) Effects of diabetes mellitus on periodontal and peri-implant conditions: update on associations and risks. *J Clin Periodontol* 35:398–409. <https://doi.org/10.1111/j.1600-051X.2008.01282.x>
- Sasaki R, Devhare PB, Steele R et al (2017) Hepatitis C virus-induced CCL5 secretion from macrophages activates hepatic stellate cells. *Hepatology* 66:746–757. <https://doi.org/10.1002/hep.29170>
- Seitz R (2010) Human cytomegalovirus (HCMV)-revised. *Transfus Med Hemotherapy* 37:365–375. <https://doi.org/10.1159/000322141>
- Seitz R (2016) Human immunodeficiency virus (HIV). *Transfus Med Hemotherapy* 43:203–222. <https://doi.org/10.1159/000445852>
- Serfaty L, Andreani T, Giral P et al (2001) Hepatitis C virus induced hypobetalipoproteinemia: a possible mechanism for steatosis in chronic hepatitis C. *J Hepatol* 34:428–434. [https://doi.org/10.1016/S0168-8278\(00\)00036-2](https://doi.org/10.1016/S0168-8278(00)00036-2)
- Seth H (2019) Fatty liver disease in persons with HIV infection. *Top Antivir Med* 27:75–82
- Shafer RW, Vuitton DA (1999) Highly active antiretroviral therapy (HAART) for the treatment of infection with human immunodeficiency virus type 1. *Biomed Pharmacother* 53:73–86. [https://doi.org/10.1016/S0753-3322\(99\)80063-8](https://doi.org/10.1016/S0753-3322(99)80063-8)
- Sheikh MY, Choi J, Qadri I et al (2008) Hepatitis C virus infection: molecular pathways to metabolic syndrome. *Hepatology* 47:2127–2133. <https://doi.org/10.1002/hep.22269>
- Shrivastav S, Kino T, Cunningham T et al (2008) Human immunodeficiency virus (HIV)-1 viral protein R suppresses transcriptional activity of peroxisome proliferator-activated receptor γ and inhibits adipocyte differentiation: implications for HIV-associated lipodystrophy. *Mol Endocrinol* 22:234–247. <https://doi.org/10.1210/me.2007-0124>
- Simões Quaresma JA, Souza Barros VLR, Rainero Fernandes E et al (2005) Reconsideration of histopathology and ultrastructural aspects of the human liver in yellow fever. *Acta Trop* 94:116–127. <https://doi.org/10.1016/j.actatropica.2005.03.003>
- So-Armah K, Freiberg MS (2018) HIV and cardiovascular disease: update on clinical events, special populations, and novel biomarkers. *Curr HIV/AIDS Rep* 15:233–244. <https://doi.org/10.1007/s11904-018-0400-5.HIV>
- Somsouk M, Estes JD et al (2015) Gut epithelial barrier and systemic inflammation during chronic HIV infection. *Physiol Behav* 29:43–51. <https://doi.org/10.1016/j.physbeh.2017.03.040>
- Stefan N, Häring HU (2013) Circulating fetuin-A and free fatty acids interact to predict insulin resistance in humans. *Nat Med* 19:394–395. <https://doi.org/10.1038/nm.3116>
- Stefan N, Häring H, Cusi K (2018) Non-alcoholic fatty liver disease: causes, diagnosis, cardiometabolic consequences, and treatment strategies. *Lancet Diabetes Endocrinol* 8587:1–12. [https://doi.org/10.1016/S2213-8587\(18\)30154-2](https://doi.org/10.1016/S2213-8587(18)30154-2)
- Stern JH, Rutkowski JM, Scherer PE (2016) Adiponectin, leptin, and fatty acids in the maintenance of metabolic homeostasis through adipose tissue crosstalk. *Cell Metab* 23:770–784. <https://doi.org/10.1016/j.cmet.2016.04.011>
- Sumida Y, Kanemasa K, Imai S et al (2015) *Helicobacter pylori* infection might have a potential role in hepatocyte ballooning in nonalcoholic fatty liver disease. *J Gastroenterol* 50:996–1004. <https://doi.org/10.1007/s00535-015-1039-2>
- Sun DQ, Liu WY, Wu SJ et al (2016) Increased levels of low-density lipoprotein cholesterol within the normal range as a risk factor for nonalcoholic fatty liver disease. *Oncotarget* 7:5728–5737. <https://doi.org/10.18632/oncotarget.6799>
- Sutti S, Albano E (2020) Adaptive immunity: an emerging player in the progression of NAFLD. *Nat Rev Gastroenterol Hepatol* 17:81–92. <https://doi.org/10.1038/s41575-019-0210-2>
- Suwarto S, Diahtantri RA, Hidayat MJ, Widjaya B (2018) Nonalcoholic fatty liver disease is associated with increased hemoconcentration, thrombocytopenia, and longer hospital stay in dengue-infected patients with plasma leakage. *PLoS ONE* 13:1–11. <https://doi.org/10.1371/journal.pone.0205965>
- Tandra S, Yeh MM, Brunt EM et al (2011) Presence and significance of microvesicular steatosis in nonalcoholic fatty liver disease. *J Hepatol* 55:654–659. <https://doi.org/10.1016/j.jhep.2010.11.021>
- Tang DM, Kumar S (2017) The association between *Helicobacter pylori* infection and nonalcoholic fatty liver disease. *Curr Gastroenterol Rep* 19:1–5. <https://doi.org/10.1007/s11894-017-0545-1>
- Taylor JM (2018) Hepatitis D virus replication. *Cold Spring Harb Perspect Med* 5:a021568. https://doi.org/10.1007/978-3-319-94355-8_11
- Tilton C, Clippinger AJ, Maguire T, Alwine JC (2011) Human cytomegalovirus induces multiple means to combat reactive oxygen species. *J Virol* 85:12585–12593. <https://doi.org/10.1128/jvi.05572-11>
- Trepanowski JF, Mey J, Varady KA (2015) Fetuin-A: a novel link between obesity and related complications. *Int J Obes* 39:734–741. <https://doi.org/10.1038/ijo.2014.203>
- Tuyama AC, Hong F, Saiman Y et al (2010) Human immunodeficiency virus (HIV)-1 infects human hepatic stellate cells and promotes collagen I and monocyte chemoattractant protein-1 expression:

- implications for the pathogenesis of HIV/hepatitis C virus-induced liver fibrosis. *Hepatology* 52:612–622. <https://doi.org/10.1002/hep.23679>. Human
- Upala S, Jaruvongvanich V, Rianguiwat T et al (2016) Association between *Helicobacter pylori* infection and metabolic syndrome: a systematic review and meta-analysis. *J Dig Dis* 17:433–440. <https://doi.org/10.1111/1751-2980.12367>
- Urban S, Schulze A, Dandri M, Petersen J (2010) The replication cycle of hepatitis B virus. *J Hepatol* 52:282–284. <https://doi.org/10.1016/j.jhep.2009.10.031>
- Vallet-Pichard A, Mallet V, Pol S (2012) Nonalcoholic fatty liver disease and HIV infection. *Semin Liver Dis* 32:158–166. <https://doi.org/10.1055/s-0032-1316471>
- van Welzen BJ, Mudrikova T, El Idrissi A et al (2019) A review of non-alcoholic fatty liver disease in HIV-infected patients: the next big thing? *Infect Dis Ther* 8:33–50. <https://doi.org/10.1007/s40121-018-0229-7>
- Vera IM, Grilo Ruivo MT, Lemos Rocha LF et al (2019) Targeting liver stage malaria with metformin. *JCI Insight* 4:1–10. <https://doi.org/10.1172/jci.insight.127441>
- Viriyavejakul P, Khachonsaksumet V, Punsawad C (2014) Liver changes in severe *Plasmodium falciparum* malaria: histopathology, apoptosis and nuclear factor kappa B expression. *Malar J* 13:1–9. <https://doi.org/10.1186/1475-2875-13-106>
- Vlahakis SR, Villasis-Keever A, Gomez TS et al (2003) Human immunodeficiency virus-induced apoptosis of human hepatocytes via CXCR4. *J Infect Dis* 188:1455–1460. <https://doi.org/10.1086/379738>
- Vodkin I, Valasek MA, Bettencourt R et al (2015) Clinical, biochemical and histological differences between HIV-associated NAFLD and primary NAFLD: a case-control study. *Aliment Pharmacol Ther* 41:368–378. <https://doi.org/10.1111/apt.13052>
- von Loeffelholz C, Horn P, Birkenfeld AL et al (2016) Fetuin A is a predictor of liver fat in preoperative patients with nonalcoholic fatty liver disease. *J Invest Surg* 29:266–274. <https://doi.org/10.3109/08941939.2016.1149640>
- Waggoner JJ, Rojas A, Pinsky BA (2018) Yellow fever virus: diagnostics for a persistent arboviral threat. *J Clin Microbiol* 56:1–13. <https://doi.org/10.1128/JCM.00827-18>
- Wang G, Burczynski F, Anderson J, Zhong G (2007) Effect of host fatty acid-binding protein and fatty acid uptake on growth of *Chlamydia trachomatis* L2. *Microbiology* 153:1935–1939. <https://doi.org/10.1099/mic.0.2006/003491-0>
- Waris G, Felmlee DJ, Negro F, Siddiqui A (2007) Hepatitis C virus induces proteolytic cleavage of sterol regulatory element binding proteins and stimulates their phosphorylation via oxidative stress. *J Virol* 81:8122–8130. <https://doi.org/10.1128/jvi.00125-07>
- White AJ (2001) Mitochondrial toxicity and HIV therapy. *Sex Transm Infect* 77:158–173. <https://doi.org/10.1136/sti.77.3.158>
- White NJ, Pukrittayakamee S, Hien TT et al (2014) Malaria. *Lancet* 383:723–735. [https://doi.org/10.1016/S0140-6736\(13\)60024-0](https://doi.org/10.1016/S0140-6736(13)60024-0)
- Wijarnpreecha K, Thongprayoon C, Panjawan P et al (2018) *Helicobacter pylori* and risk of nonalcoholic fatty liver disease. *J Clin Gastroenterol* 52:386–391. <https://doi.org/10.1097/MCG.0000000000000784>
- Xiong J, Zhang H, Wang Y et al (2017) Hepatitis B virus infection and the risk of nonalcoholic fatty liver disease: a meta-analysis. *Oncotarget* 8:107295–107302. <https://doi.org/10.18632/oncotarget.22364>
- Xu ZP, Chang H, Ni YY et al (2019) *Schistosoma japonicum* infection causes a reprogramming of glycolipid metabolism in the liver. *Parasit Vectors* 12:1–10. <https://doi.org/10.1186/s13071-019-3621-6>
- Yan Q, Hruz PW (2005) Direct comparison of the acute in vivo effects of HIV protease inhibitors on peripheral glucose disposal. *J Acquir Immune Defic Syndr* 40:398–403. <https://doi.org/10.1038/jid.2014.371>
- Yan H, Zhong G, Xu G et al (2012) Sodium taurocholate cotransporting polypeptide is a functional receptor for human hepatitis B and D virus. *Elife* 2012:1–28. <https://doi.org/10.7554/eLife.00049>
- Yi Y, Lagniton PNP, Ye S et al (2020) COVID-19: what has been learned and to be learned about the novel coronavirus disease. *Int J Biol Sci* 16:1753–1766. <https://doi.org/10.7150/ijbs.45134>
- Yoneda M, Naka S, Nakano K et al (2012) Involvement of a periodontal pathogen, *Porphyromonas gingivalis* on the pathogenesis of non-alcoholic fatty liver disease. *BMC Gastroenterol* 12:16. <https://doi.org/10.1186/1471-230X-12-16>
- Younossi Z, Anstee QM, Marietti M et al (2018) Global burden of NAFLD and NASH: trends, predictions, risk factors and prevention. *Nat Rev Gastroenterol Hepatol* 15:11–20. <https://doi.org/10.1038/nrgastro.2017.109>
- Younossi ZM, Marchesini G, Pinto-Cortez H, Petta S (2019) Epidemiology of nonalcoholic fatty liver disease and nonalcoholic steatohepatitis: implications for liver transplantation. *Transplantation* 103:22–27. <https://doi.org/10.1097/TP.0000000000002484>
- Yuan J, Chen C, Cui J et al (2019) Fatty liver disease caused by high-alcohol-producing *Klebsiella pneumoniae*. *Cell Metab* 30:675–688.e7. <https://doi.org/10.1016/j.cmet.2019.08.018>
- Zanto TP, Hennigan K, Östberg M et al (2010) Hepatocellular ballooning in NASH. *J Hepatol* 53:719–723. <https://doi.org/10.1016/j.cortex.2009.08.003>. Predictive
- Zein NN (2000) Clinical significance of hepatitis C virus genotypes. *Clin Microbiol Rev* 13:223–235. <https://doi.org/10.1128/CMR.13.2.223-235.2000>
- Zhang X, Shen J, Man K et al (2014) CXCL10 plays a key role as an inflammatory mediator and a non-invasive biomarker of non-alcoholic steatohepatitis. *J Hepatol* 61:1365–1375. <https://doi.org/10.1016/j.jhep.2014.07.006>
- Zhang X, Wang Y, Qian D et al (2018) HCMV-encoded IE2 promotes NAFLD progression by up-regulation of SREBP1c expression in UL122 genetically modified mice. *Int J Clin Exp Pathol* 11:4213–4220
- Zhang L, Mosoian A, Schwartz ME et al (2019) HIV infection modulates IL-1 β response to LPS stimulation through a TLR4-NLRP3 pathway in human liver macrophages. *J Leukoc Biol* 105:783–795. <https://doi.org/10.1002/JLB.4A1018-381R>
- Zhang C, Shi L, Wang F (2020) Liver injury in COVID-19: management and challenges. *Lancet Gastroenterol Hepatol* 10:2019–2021. [https://doi.org/10.1016/S2468-1253\(20\)30057-1](https://doi.org/10.1016/S2468-1253(20)30057-1)
- Zhao X, Shah D, Sambamoorthi U (2018) Association between chronic hepatitis B infection and metabolic syndrome. *J Diabetes Metab Disord* 17:223–232. <https://doi.org/10.1007/s40200-018-0364-4>
- Zhu YZ, Qian XJ, Zhao P, Qi ZT (2014) How hepatitis C virus invades hepatocytes: the mystery of viral entry. *World J Gastroenterol* 20:3457–3467. <https://doi.org/10.3748/wjg.v20.i13.3457>
- Zylberberg H, Rimaniol A, Pol S et al (1999) Soluble tumor necrosis factor receptors in chronic hepatitis C: a correlation with histological fibrosis and activity. *J Hepatol* 30:185–191. [https://doi.org/10.1016/s0168-8278\(99\)80060-9](https://doi.org/10.1016/s0168-8278(99)80060-9)