



OPEN

Better COVID-19 Intensive Care Unit survival in females, independent of age, disease severity, comorbidities, and treatment

Daniek A. M. Meijs^{1,2,✉}, Bas C. T. van Bussel^{1,3}, Björn Stessel^{4,14}, Jannet Mehagnoul-Schipper⁵, Anisa Hana², Clarissa I. E. Scheeren⁶, Sanne A. E. Peters^{7,8,9}, Walther N. K. A. van Mook^{1,10,11}, Iwan C. C. van der Horst^{1,11}, Gernot Marx¹², Dieter Mesotten^{13,14}, Chahinda Ghossein-Doha^{1,11,15,16} & CoDaP investigators*

Although male Severe Acute Respiratory Syndrome Coronavirus 2 (SARS-CoV-2) patients have higher Intensive Care Unit (ICU) admission rates and a worse disease course, a comprehensive analysis of female and male ICU survival and underlying factors such as comorbidities, risk factors, and/or anti-infection/inflammatory therapy administration is currently lacking. Therefore, we investigated the association between sex and ICU survival, adjusting for these and other variables. In this multicenter observational cohort study, all patients with SARS-CoV-2 pneumonia admitted to seven ICUs in one region across Belgium, The Netherlands, and Germany, and requiring vital organ support during the first pandemic wave were included. With a random intercept for a center, mixed-effects logistic regression was used to investigate the association between sex and ICU survival. Models were adjusted for age, Acute Physiology and Chronic Health Evaluation II (APACHE II) score, comorbidities, and anti-infection/inflammatory therapy. Interaction terms were added to investigate effect modifications by sex with country and sex with obesity. A total of 551 patients (29% were females) were included. Mean age was 65.4 ± 11.2 years. Females were more often obese and smoked less frequently than males (p-value 0.001 and 0.042, respectively). APACHE II scores of females and males were comparable. Overall, ICU mortality was 12% lower in females than males (27% vs 39% respectively, p-value < 0.01) with an odds ratio (OR) of 0.62 (95%CI 0.39–0.96, p-value 0.032) after adjustment for age and APACHE II score, 0.63 (95%CI 0.40–0.99, p-value 0.044) after additional adjustment for comorbidities, and 0.63 (95%CI 0.39–0.99, p-value 0.047) after adjustment for anti-infection/inflammatory therapy. No effect modifications by sex with country and sex with obesity were found (p-values for interaction > 0.23 and 0.84, respectively). ICU survival in female SARS-CoV-2

¹Department of Intensive Care Medicine, Maastricht University Medical Center + (Maastricht UMC+), P. Debyelaan 25, 6229 HX Maastricht, the Netherlands. ²Department of Intensive Care Medicine, Laurentius Ziekenhuis, Roermond, the Netherlands. ³Present address: Care and Public Health Research Institute (CAPHRI), Maastricht University, Maastricht, the Netherlands. ⁴Department of Intensive Care Medicine, Jessa Hospital, Hasselt, Belgium. ⁵Department of Intensive Care Medicine, VieCuri Medisch Centrum, Venlo, the Netherlands. ⁶Department of Intensive Care Medicine, Zuyderland Medisch Centrum, Heerlen/Sittard, the Netherlands. ⁷Julius Center for Health Sciences and Primary Care, University Medical Center Utrecht, Utrecht, the Netherlands. ⁸The George Institute for Global Health, Imperial College London, London, United Kingdom. ⁹The George Institute for Global Health, University of New South Wales, Sydney, Australia. ¹⁰Maastricht UMC+ Academy for Postgraduate Medical Education, Maastricht, the Netherlands. ¹¹Cardiovascular Research Institute Maastricht (CARIM), Maastricht, the Netherlands. ¹²Department of Intensive Care Medicine, University Hospital Rheinisch Westfälische Hochschule (RWTH) Aachen, Aachen, Germany. ¹³Department of Intensive Care Medicine, Ziekenhuis Oost-Limburg, Genk, Belgium. ¹⁴Faculty of Medicine and Life Sciences, UHasselt, Diepenbeek, Belgium. ¹⁵Department of Cardiology, Maastricht UMC+, Maastricht, the Netherlands. ¹⁶School for Oncology and Developmental Biology, Maastricht UMC+, Maastricht, the Netherlands. *A list of authors and their affiliations appears at the end of the paper. ✉email: daniek.meijs@mumc.nl

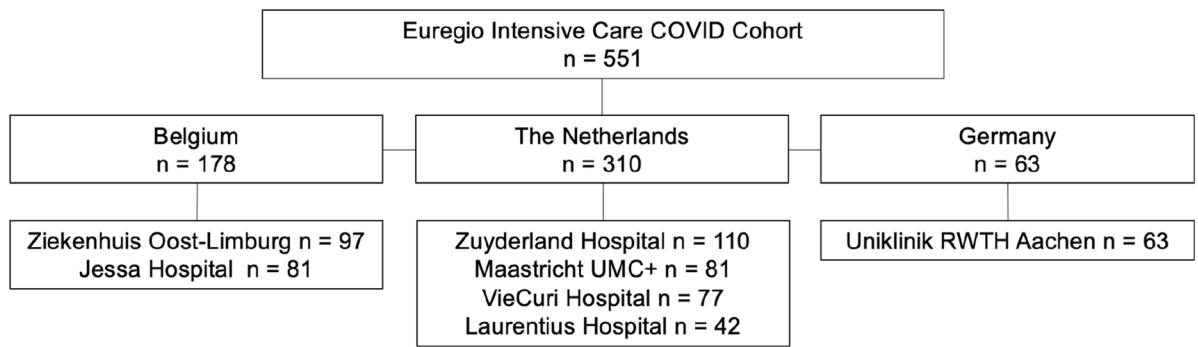


Figure 1. Flow chart.

patients was higher than in male patients, independent of age, disease severity, smoking, obesity, comorbidities, anti-infection/inflammatory therapy, and country. Sex-specific biological mechanisms may play a role, emphasizing the need to address diversity, such as more sex-specific prediction, prognostic, and therapeutic approach strategies.

In early 2020, a novel β -coronavirus causing Severe Acute Respiratory Syndrome Coronavirus 2 (SARS-CoV-2) rapidly spread worldwide, resulting in a pandemic with global impact with an important proportion of the hospitalized patients requiring supportive treatment in the Intensive Care Unit (ICU)^{1,2}. By now, risk factors such as age, smoking, cardiovascular and pulmonary comorbidities have been ascertained to influence fatality rates in hospitalized patients strongly³. Although Coronavirus Disease 2019 (COVID-19) infects both sexes at similar incidence, case-fatality rates are lower for females (7%) than males (10%), resulting in a marked male-to-female case fatality ratio ranging from 1.6 to 2.8, according to the Global Health 50/50 data tracker^{4,5}. Furthermore, a systematic review and meta-analysis of more than 3 million cases demonstrated that male sex was associated with higher odds ratios of requiring ICU admission and overall mortality⁶. On the other hand, an Italian multicenter study revealed higher ICU admission rates for males than females^{7,8}. Furthermore, multi-organ failure in the ICU has appeared to develop more favorable in surviving females than males⁹. Previous research confirmed the findings that male patients predominate in the ICU and receive more supportive treatment than females^{10–12}.

Sex contributed to disparities in vulnerability, incidence, and case-fatality rates of various diseases in the past^{4,13}.

It is assumed that sex differences affect viral susceptibility, response to the virus, disease course, and (side-) effects of initiated therapy, emphasizing why sex aspects and sex-specific data analyses should be implemented in clinical studies^{14,15}. We recently demonstrated that current clinical trials on pharmacological therapies for COVID-19 rarely report sex-stratified analyses¹⁶, which illustrates that sex differences are infrequently taken into account.

Although some studies have depicted higher mortality rates in male patients^{6,17–19}, these studies have been performed in heterogeneous populations with clinical diversity, such as a broad range of disease courses, ranging from mild symptoms to respiratory insufficiency requiring ICU admission²⁰. More importantly, other baseline risk factors known to be associated with poor outcome, such as age, comorbidities, disease severity, and therapy, are often not taken into account²¹. To conclude, a comprehensive analysis of female and male survival of COVID-19 in the ICU and underlying factors currently lacks in the literature^{22–24}, where sex differences in survival and the role of potentially confounding factors remain unknown^{7,8}. Therefore, we investigated the association between sex and ICU survival in a Western European cohort of SARS-CoV-2 infected patients, adjusting for age, disease severity, obesity, smoking, comorbidities, and anti-infection/inflammatory therapy.

Results

From the 2nd of March 2020 to the 12th of August 2020, 551 patients with COVID-19 pneumonia were admitted to seven ICUs mentioned above in Western Europe (Fig. 1), 434 (79%) were mechanically ventilated. During illness, 18 (3%) patients were transferred within the Euregio and thus admitted to two or three of the Euregio ICUs (due to lack of bed availability and/or tertiary care referral for extracorporeal membrane oxygenation consideration). The number of females in the whole cohort was 159 (29%). The mean age was comparable between females and males (64.1 ± 12.6 vs 66.0 ± 10.5 years, p -value 0.095), as were the presence of dyslipidemia, diabetes mellitus, hypertension, chronic liver disease, chronic lung disease, and chronic renal disease (Table 1, p -values > 0.05). However, females were more often obese than males (42% vs 28%, p -value 0.001) and reported smoking less often than males (15% vs 22%, p -value 0.042). Acute Physiology And Chronic Health Evaluation II (APACHE II) scores did not differ between females and males (15.7 ± 5.2 vs 16.3 ± 5.6 , p -value 0.305).

ICU length of stay was comparable between females and males (12.4 [5.0–28.0] vs 16.0 [7.0–30.0] days, p -value 0.347). During ICU stay, females required less often invasive mechanical ventilation (72% vs 82% respectively, p -value 0.010) and antibacterial therapy than males (91% vs 96%, respectively, p -value 0.011). Administration of other anti-infection/inflammatory drugs did not differ between the sexes (Table 1). The ICU mortality rate was 12% lower in females than males (27% vs 39%, p -value < 0.008) (Table 2, Fig. 2). The Kaplan–Meier survival

	Females	Males	p-value
Number of patients	159	392	
Age, years	64.1 ± 12.6	66.0 ± 10.5	0.095
Height, m	1.63 ± 0.08	1.78 ± 0.08	<0.001
Weight, kg	80.5 ± 17.7	90.0 ± 16.1	<0.001
Body mass index, kg/m ²	30.1 ± 6.4	28.6 ± 4.7	0.007
Obesity, n (%)	66 (42)	109 (28)	0.001
Dyslipidemia, n (%)	41 (26)	108 (28)	0.500
Diabetes Mellitus, n (%)	40 (25)	101 (26)	0.882
Hypertension, n (%)	76 (48)	184 (47)	0.805
Smoking, n (%)	24 (15)	88 (22)	0.042
Chronic liver disease, n (%)	1 (1)	3 (1)	1.000 ^a
Chronic lung disease, n (%)	34 (21)	67 (17)	0.238
Chronic renal disease, n (%)	23 (15)	45 (12)	0.334
Patients admitted from the emergency department/hospital ward/by transport, n	54/77/28	130/200/62	0.816
Patients from Belgium/ the Netherlands/Germany, n	60/77/22	118/233/41	0.061
APACHE II score	15.7 ± 5.2	16.3 ± 5.6	0.305
Antibacterial therapy, n (%)	145 (91)	378 (96)	0.011
Antiviral medication, n (%)			0.527 ^a
Oseltamivir, n (%)	6 (4)	8 (2)	
Lopinavir/ritonavir, n (%)	5 (3)	13 (3)	
(Hydroxy)chloroquine, n (%)	82 (52)	234 (60)	0.081
Remdesivir, n (%)	2 (1)	0 (0)	0.083 ^a
Interleukin inhibitors, n (%)	6 (4)	15 (4)	0.972
Steroids, n (%)	56 (35)	116 (30)	0.223

Table 1. ICU admission characteristics stratified for females and males of the full Euregio Intensive Care cohort. Data are presented as mean ± SD, median [IQR], or percentages. P-values for differences between sex are tested by independent Student's T-Test, Mann–Whitney U test or Chi-Square, as appropriate unless otherwise specified: ^aFisher's exact test. ICU, Intensive Care Unit. The comprehensive data for the full cohort were complete, except missings for height (n = 27), weight (n = 33), BMI (n = 37), obesity (n = 20), dyslipidemia (n = 108), hypertension (n = 1), smoking (n = 96), antiviral medication (n = 3), interleukin inhibitors (n = 1), and steroids (n = 4).

	Females	Males	p-value
Number of patients	159	392	
ICU death, n (%)	43 (27)	153 (39)	0.008
Length of ICU stay, days	12.4 [5.0–28.0]	16.0 [7.0–30.0]	0.347
Invasive mechanical ventilation, n (%)	114 (72)	320 (82)	0.010
Length of invasive mechanical ventilation, days	15.8 [8.20–27.0]	16.5 [8.7–27.9]	0.477

Table 2. ICU outcomes of the Euregio Intensive Care cohort stratified for females and males. Data are presented as median [IQR], or percentages. P-values for differences between sex are tested by the Mann–Whitney U test or Chi-Square, as appropriate. ICU, Intensive Care Unit. The comprehensive data for the full cohort were complete, except missings for length of ICU stay (n = 1) and length of invasive mechanical ventilation (n = 4).

curves showed that more females survived in the ICU than males, while the curves crossed around 80 days of admission (although with a very low number of events) (Fig. 2).

In a mixed-effects crude logistic regression model with a random center effect, females had a lower odds ratio for mortality than males (OR 0.59 (95%CI 0.39–0.89), Table 3, model 1), suggesting higher ICU survival rates in females than males. Adjustment for age and APACHE II score (OR 0.62 (95%CI 0.39–0.96), model 2), and additional adjustment for the presence of obesity, dyslipidemia, diabetes mellitus, hypertension, smoking, chronic liver disease, chronic lung disease, and chronic renal disease (OR 0.63 (95%CI 0.40–0.99), model 3), or antibacterial therapy, antiviral medication, (hydroxy)chloroquine, remdesivir, interleukin inhibitors, and steroids (OR 0.63 (95%CI 0.39–0.99), model 4) did not change the results. Similar results were observed in the subgroup of mechanically ventilated patients (n = 434) (Table 3). Between-center variances in model intercepts were not statistically significantly different (p-values for models 2, 3 and 4 ≥ 0.17), which means that baseline characteristics of sexes did not explain the observed sex differences in mortality. When adding interaction terms

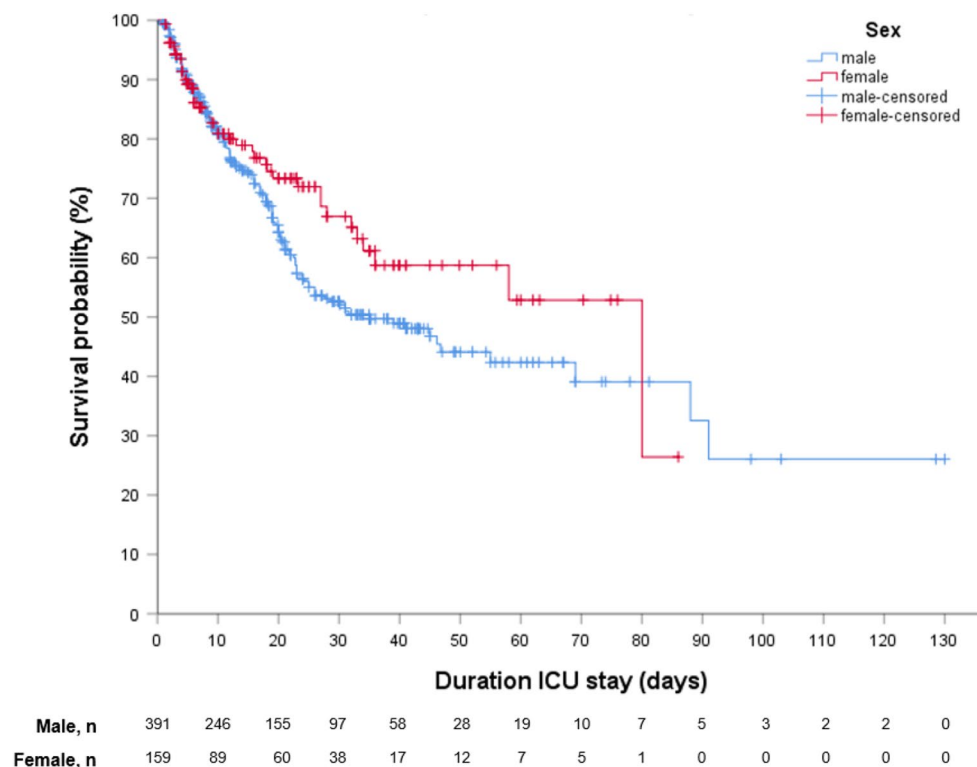


Figure 2. Kaplan–Meier survival estimate by sex ICU, Intensive Care Unit. The Kaplan–Meier survival curves show that more females survive the ICU than males, while the curves cross around 80 days with a very low number of events by then. Number at risk (n) = 550 as 1 patient missed data on duration of ICU stay.

	Full cohort n = 551			Mechanically ventilated subcohort n = 434		
	OR	95% CI	p-value	OR	95% CI	p-value
Model 1. The crude model with a random intercept for hospital	0.59	0.39–0.89	0.012	0.56	0.36–0.89	0.014
Model 2. Model 1 + age and APACHE II score	0.62	0.39–0.96	0.032	0.57	0.35–0.92	0.023
Model 3. Model 2 + obesity, dyslipidemia, diabetes mellitus, hypertension, smoking, chronic liver disease, chronic lung disease and chronic renal disease	0.63	0.40–0.99	0.044	0.61	0.37–1.01	0.052
Model 4. Model 2 + antibacterial therapy, antiviral medication, (hydroxy)chloroquine, remdesivir, interleukin inhibitors, and steroids	0.63	0.39–0.99	0.047	0.58	0.35–0.96	0.036

Table 3. The association between sex and ICU death by mixed-logistic regression analyses. Data are odds ratios (OR) with 95% confidence intervals (95% CI) for females compared to males (as reference). A lower OR indicates an increased survival rate for females. Missings (for the full cohort: obesity (n = 20), dyslipidemia (n = 108), hypertension (n = 1), smoking (n = 96), antiviral medication (n = 3), interleukin inhibitors (n = 1), and steroids (n = 4)) were included in model 3 and 4 as separate category.

for sex and country and sex and obesity to the models, no effect modifications were observed (p-values for interaction > 0.23 and 0.84, respectively). A sensitivity analysis with missing data handled by multiple imputation showed similar results.

In addition, sensitivity analyses of excluding transported patients displayed similar effect estimates, although statistical power was somewhat reduced (Supplementary Table S1).

Discussion

Although patients are individuals, traditionally, we tend to categorize them according to their disease or condition and treat them in the same "diagnosis category" using one-size-fits-all interventions. However, how a disease may unfold in an individual patient has many dimensions, and heterogeneity has major implications on disease course and outcome²⁵. For COVID-19, heterogeneity in the course of the disease and complications has been observed^{9,26}, ranging from typical flu-like symptoms to critical illness requiring intensive care admission and death^{27,28}.

In this cohort study of 551 COVID-19 patients admitted to the ICUs of seven hospitals in three Western European countries, we demonstrated that females had a 40% greater chance to survive ICU stay than males,

independent of age, the severity of acute critical illness, obesity, smoking, major comorbidities, administered anti-infection/inflammatory therapy, and country. The results were similar for the subgroup of invasively mechanically ventilated patients. No effect modifications for sex with country and sex with obesity were present. Secondly, we observed that females were the minority in the Euregio cohort, representing 29% of the study population.

The prevalence of females in our study is in line with the reported prevalence in previous COVID-19 studies in ICU patients⁷. In a multicenter observational study in Italian ICU patients⁸, 20.1% (95%CI 18.9–21.3) of the study population was female with a median age of 64 years, which is in line with the age in our study. However, the reported mortality of approximately 50% is higher than in our study, which may relate to the higher prevalence of comorbidities in their cohort. Nevertheless, in agreement with our findings, they found that the male sex was significantly associated with mortality (HR 1.57 95%CI 1.31–1.88), although they did not adjust for the severity of disease.

Overall, evidence points towards a slightly lower prevalence of symptomatic COVID-19 in females than males (45% vs 55%, respectively)²⁹, with males having a consistently three times higher odds for ICU admission and once admitted an up to 40% higher mortality rate compared with females, both in line with our findings⁶. Notably, these findings are not unique for COVID-19. In fact, higher mortality rates for males were also observed in previous Middle East Respiratory Syndrome Coronavirus and Severe Acute Respiratory Syndrome Coronavirus 1 outbreaks^{30,31}. Several studies have demonstrated that elderly patients with comorbidities are at increased risk of dying from COVID-19^{32–34}. Additionally, underlying health conditions such as cardiovascular disease, hypertension, diabetes mellitus, smoking, and obesity were associated with an increased risk of mortality^{35–37}. Our study shows a higher odds of mortality for males, as other studies do, but is distinctive since results are independent of age, smoking, obesity, comorbidities, APACHE II scores (i.e., the classification system used to assess disease severity)³⁸, anti-infection/inflammatory therapy, and country, indicating that sex might be associated with ICU outcome independently of disease severity at ICU admission.

Although COVID-19 seems to be linked to multiple "traditional" risk factors, its presentation is multidimensional, with sex and gender being essential determining factors. Although it had been suggested that the sex disparities in COVID-19 were due to higher smoking and comorbidity rates observed in males³⁹, we show that the association between sex and ICU outcome is independent of disease severity, "traditional risk factors," and treatments. As treatment could be considered as a mediator, instead of a confounder, in the reported models, the results suggest that treatments evaluated are not a clinically and statistically significant contributor to the causal pathway between sex and ICU outcome. Even more striking is the higher prevalence of obesity seen in females in our cohort, which has been associated with worse outcomes in earlier studies, while it did not affect the better survival of females compared to males in our study.

These findings support the theory that the pathophysiology of SARS-CoV-2 infection may differ between both sexes in the ICU setting^{9,16}. Indeed, evidence on several sex-specific interacting mechanisms on immunological, hormonal, and cardiovascular pathophysiology is accumulating^{4,14,29,40–50}. Since many genes involved in the immunological response to infection are present on the X chromosome, the XX and XY genetic constitutions could also potentially contribute to COVID-19 severity^{40,48}. Females show a more rapid and aggressive immune response to pathogens with a lower degree of systemic inflammation, which facilitates viral clearance^{41,51}. Moreover, females have a more robust T-cell activation during SARS-CoV-2 infection, whereas males have higher plasma levels of innate immune cytokines and increased non-classical monocyte cell populations induction. Both observations are correlated with increased severity in males^{49,50}. In addition, female and male steroid and sex hormones could play a contributory role in pathogenesis. Estrogen in females, for instance, can have immune-enhancing effects, while testosterone in males can exert immune-suppressive effects. Furthermore, the expression of receptors that determine viral cell entry, such as transmembrane protease serine 2 (TMPRSS2) and angiotensin-converting enzyme (ACE), is affected by sex hormones and lower in females than in males^{40–44}. TMPRSS2 is enhanced by testosterone and may play a role in delayed viral clearance^{41,42}, whereas the ACE2 receptor, exerting protective effects in the heart, lungs, kidneys, and guts by deactivating the effects of the renin-angiotensin system (RAS)⁵¹, is encoded on the X chromosome and downregulated by estrogens. Thus, females show a reduced propensity to upregulate RAS activity in COVID-19, which could contribute to higher disease severity in males, as RAS overactivation contributes to pathogenesis in cardiovascular disease and potentially COVID-19⁵¹.

Our study shows for the first time that, *independent* of cardiovascular comorbidities, females have a survival benefit for COVID-19 once admitted to the ICU. Sex differences in the prevalence of subclinical and yet undiagnosed underlying cardiovascular comorbidities may still play a role, as we cannot entirely exclude residual confounding²¹, while our adjustments were comprehensive. However, it is unlikely that residual confounding thoroughly explains the observed sex difference.

Strengths and limitations. Several studies have shown that females have higher survival rates in heterogeneous population-based data sets⁴. Our study, however, is the first to demonstrate that a higher survival rate of females is maintained after admission to a Western European ICU, and more importantly, independent of age, disease severity, obesity, smoking, comorbidities, anti-infection/inflammatory therapy, and country. Sensitivity analyses, excluding transported patients to and out of Euregio, showed similar results, which reduces bias due to loss of ICU follow-up beyond Euregio. In addition, the identification of transports within Euregio reduces bias due to including the same patient twice in the models. Although we collected variables from healthcare systems, our data collection was complete (models 1 and 2), except for a few missings for some potential confounders (obesity and hypertension), while smoking and dyslipidemia only were less complete (> 5% missings) (models 3). Therefore, we additionally used multiple imputation to handle missing data appropriately^{52–55}. The data collection process met high standards, and collected healthcare data were of high quality using a prede-

defined protocol addressing the present hypothesis⁵⁶. Moreover, we used multivariable adjustments to address a comprehensive set of potential confounders. Nevertheless, the study cannot rule out that residual confounding has biased the reported associations^{21,57,58}. We did not follow-up on patients over a predefined time period and classified survivors as those who were discharged from the ICU or transported.

As patients may have died after ICU discharge or transport, we feel that a survival analysis including time cannot be appropriately performed and would present invalid results, which is a limitation of the study. Consequently, no conclusion can be drawn on COVID-19 progression in the ICU based on our data. We recognize that our findings are limited to the ICU population of the Euregio, thereby limiting generalization to other contexts outside the ICU, such as other patient populations (e.g., from national registries or hospitalized) and regions^{59,60}. Admission to the ICU is the result of a selection process, which depends on many factors, including those potentially associated with sex and possibly causes index-event bias^{61,62}. If so, the observed association between sex and ICU survival could function in this selection process. Thus, as an alternative to the pathophysiological explanation for the observed sex differences in ICU outcome as discussed above, the results could also be explained by doctors' decisions regarding admission of patients to the ICU. Unfortunately, our dataset did not include information on the source population (i.e., all patients admitted for COVID-19 to the seven hospitals), and we thus cannot investigate whether selection has occurred. In addition, the results cannot be generalized beyond the ICU. As the large majority of inhabitants of Euregio are of Caucasian descent, diversity due to ethnicity within our cohort was too low for subanalysis. This variable was not considered for the collection, while it was not registered in a standardized way within each of the hospitals. Finally, the observational study design limits to conclude with regard to causality and the relation with subclinical yet undiagnosed underlying cardiovascular disease.

In this study in the Euregio, we demonstrate that females, once admitted to the ICU with COVID-19 pneumonia, have a 40% higher survival rate relative to males and that this association is independent of age, disease severity, obesity, smoking, comorbidities, anti-infection/inflammatory therapy, and country of residence. Understanding the relation between sex and COVID-19 implies recognizing diversity in the role of both biological and social factors in the risk of infection and disease, clinical presentation, the severity of outcomes, and patient selection at the individual as well as population levels. A sex-specific prediction, prognostic and therapeutic approach and sex-stratified analyses strategies should be implemented in future ICU studies, while further studies on sex-specific mechanistic pathways in SARS-CoV-2 are warranted.

Methods

The Euregio Intensive Care COVID cohort, part of the Euregio Covid Data Platform (CoDaP) project, was initiated in early March, at the beginning of the first wave of the COVID-19 pandemic. Seven neighboring ICUs (Supplementary Table S2) in Belgium, the Netherlands, and Germany collaborated and planned to share their data in a predesigned way⁶³.

We consecutively included patients with COVID-19 pneumonia and respiratory failure admitted to the ICU of any of the seven hospitals between the 2nd of March 2020 and the 12th of August 2020 (Fig. 1). At the time of admission, all patients presented with signs and symptoms of viral pneumonia. The diagnosis was confirmed by a positive PCR for SARS-CoV-2 and/or (for the Netherlands only) a positive score on chest CT scan of 4–5 based on the COVID-19 Reporting and Data System (CO-RADS) score as confirmed by a radiologist⁶⁴. Patient admission occurred via the emergency department, non-ICU wards, or from other (international) ICUs, in the latter case either for tertiary care referral or due to lack of bed availability. Follow-up ended when patients were either discharged from ICU or died, from the 11th of March to the 2nd of September.

Data collection. At the beginning of the pandemic, the number of variables was determined in the focus of interest. These included baseline demographic and clinical characteristics, laboratory values, interventions, and outcome variables, which were predefined and routinely obtained during patients' stay in the above-mentioned ICUs. The main outcome variable for the present study was ICU death. Variables were collected mostly retrospectively and pseudo-anonymized at the collecting hospital. Pseudo-anonymization of data is a widely accepted method that aims to secure the patient's privacy about his/her healthcare data while ensuring the possibility to re-collect data at the dispatching hospital. Subsequently, data were shared with Maastricht UMC+, the coordinating center within CoDaP, using electronically secured data transfer methods and stored on a secured hospital hard drive. Data access was only permitted for the primary investigators.

Data cleaning started by checking whether each variable of the study protocol was present in each of the seven datasets. Next, each hospital dataset was standardized (i.e., standardization of the variable names, characteristics, and units). When a variable was missing or inconsistencies were encountered, contact with investigators of the dispatching hospital led to re-collecting, re-calculation, and re-sending of those variables⁶⁵. The seven datasets were then merged into one dataset. Patients transferred between the ICUs of the seven Euregio hospitals were identified. Their whole ICU stay was attributed to the primary admitting ICU to prevent duplicate patient data and missing data by combining baseline and outcome data. Finally, each of the pre-final Euregio cohort variables dataset was evaluated for outliers through running queries, which was checked with the source dataset of the dispatching hospital and corrected if possible and appropriate or defined as missing. Obesity was defined as a body mass index (BMI) equal to or larger than 30 kg/m². Smoking was defined as either active smoking or a history of smoking. Comorbidities were defined either as a history of a medical diagnosis or the actual use of medication for such medical diagnosis before ICU admission.

Statistical analyses. IBM SPSS Statistics version 25 (IBM corporation, NY, USA) was used for all analyses. The full cohort was categorized into females and males, and data were presented. The number of missings per

variable is reported in the table legends. Descriptive statistics were performed on available data only. Differences between females and males were analyzed using the independent Student's T-test, Mann–Whitney U test, Chi-Square, or Fisher's exact test, as appropriate. With a random intercept for a center, mixed-effects logistic regression was used to investigate the association between sex and ICU survival. Crude models were first adjusted for age and APACHE II score, then for obesity, dyslipidemia, diabetes mellitus, hypertension, smoking, chronic liver disease, chronic lung disease, and chronic renal disease²¹, and eventually for antibacterial therapy, antiviral medication such as oseltamivir, ritonavir/lopinavir, (hydroxy)chloroquine and remdesivir, interleukin inhibitors, and steroids. Confounders were treated as continuous or categorical variables, and missing data were included as a separate category. As this method could lead to bias in observational studies^{52–55}, a sensitivity analysis was performed by handling missing data by multiple imputation. Missing values in the variables included in the model were explored, and the imputation number was based on the percentage of patients with at least one missing value. Predictive mean matching was the method of choice, and variables with missing data, auxiliary variables, and outcome variables were added to the model. Effect modifications by sex with country and sex with obesity were investigated by adding interaction terms for categories of sex and country and sex and obesity to the models. Analyses were performed for the full Euregio cohort and the mechanically ventilated patients of the cohort. Subsequently, sensitivity analyses were performed by excluding patients who were transported from a hospital outside the Euregio to our participating Euregio hospitals (i.e., due to missing baseline data), and by additionally excluding patients who were transported out of the Euregio (i.e., due to missing ICU follow-up data from hospitals beyond Euregio). Finally, for illustration, Kaplan–Meier survival curves were created. A two-sided p-value of < 0.05 and a p-interaction of < 0.1 were considered statistically significant.

Ethical approval. Ethical approval was obtained from the medical ethics committee (METC 2020–1565/3 00 523) of Maastricht UMC+. The study was performed in accordance with the General Data Protection Regulation (GDPR) act and the national data privacy laws. Patient data were collected according to good clinical practice and in accordance with relevant guidelines and regulations. Informed consent was waived by the METC of Maastricht UMC+. However, each of the participating hospitals had its own policy and approach. For example, in Maastricht UMC+, the board of directors adopted a policy to inform patients and ask their consent to use collected data⁶³. Data sharing agreements between Maastricht UMC+ and each hospital were drawn up by legal officers of Maastricht UMC+ and Clinical Trial Center Maastricht (CTCM) and subsequently tailored to each hospital. Investigators, heads of ICU departments, and the hospital board of directors of the Maastricht UMC+ and the other hospitals signed the final data-sharing agreement.

Data availability

The datasets generated and/or analyzed during the current study are not publicly available due to data sharing agreements of the participating hospitals. Individual patient data and the pseudo-anonymized dataset will not be made available to others. Only data for the full cohort or a particular subcohort will be published and shared after the provision of a research proposal and signed data access agreement of each participating hospital.

Received: 22 March 2021; Accepted: 13 December 2021

Published online: 14 January 2022

References

1. World Health Organization. *Coronavirus Disease 2019 (COVID-19): Situation Report 141*. https://www.who.int/docs/default-source/coronaviruse/situation-reports/20200609-covid-19-sitrep-141.pdf?sfvrsn=72fa1b16_2 (2020).
2. World Health Organization. *WHO Director General's Opening Remarks at the Media Briefing on COVID-19*. <https://www.who.int/dg/speeches/detail/who-director-general-s-opening-remarks-at-the-media-briefing-on-covid-19---5-june-2020> (2020).
3. Leung, C. Clinical features of deaths in the novel coronavirus epidemic in China. *Rev. Med. Virol.* **30**, e2103 (2020).
4. Gebhard, C., Regitz-Zagrosek, V., Neuhauser, H. K., Morgan, R. & Klein, S. L. Impact of sex and gender on COVID-19 outcomes in Europe. *Biol. Sex Differ.* **11**, 29 (2020).
5. Launer, J. Burnout in the age of COVID-19. *Postgrad. Med. J.* **96**, 367–368 (2020).
6. Pechham, H. *et al.* Male sex identified by global COVID-19 meta-analysis as a risk factor for death and ICU admission. *Nat. Commun.* **11**, 6317 (2020).
7. Grasselli, G. *et al.* Baseline characteristics and outcomes of 1591 patients infected with SARS-CoV-2 admitted to ICUs of the Lombardy region, Italy. *JAMA* **323**, 1574–1581 (2020).
8. Grasselli, G. *et al.* Risk factors associated with mortality among patients with COVID-19 in intensive care units in Lombardy, Italy. *JAMA Intern. Med.* **180**, 1345–1355 (2020).
9. Bels, J. L. M. *et al.* Decreased serial scores of severe organ failure assessments are associated with survival in mechanically ventilated patients; the prospective Maastricht Intensive Care COVID cohort. *J. Crit. Care* **62**, 38–45 (2020).
10. Samuelsson, C., Sjöberg, F., Karlstrom, G., Nolin, T. & Walther, S. M. Gender differences in outcome and use of resources do exist in Swedish intensive care, but to no advantage for women of premenopausal age. *Crit. Care* **19**, 129 (2015).
11. Valentin, A., Jordan, B., Lang, T., Hiesmayr, M. & Metnitz, P. G. Gender-related differences in intensive care: A multiple-center cohort study of therapeutic interventions and outcome in critically ill patients. *Crit. Care Med.* **31**, 1901–1907 (2003).
12. Fowler, R. A. *et al.* Sex- and age-based differences in the delivery and outcomes of critical care. *CMAJ* **177**, 1513–1519 (2007).
13. Mehta, S. *et al.* Gender parity in critical care medicine. *Am. J. Respir. Crit. Care Med.* **196**, 425–429 (2017).
14. Bischof, E., Wolfe, J. & Klein, S. L. Clinical trials for COVID-19 should include sex as a variable. *J. Clin. Invest.* **130**, 3350–3352 (2020).
15. Bischof, E. *et al.* Towards precision medicine: Inclusion of sex and gender aspects in COVID-19 clinical studies-acting now before it is too late-a joint call for action. *Int. J. Environ. Res. Public Health* **17**, 3715 (2020).
16. Schiffer, V. M. M. M. *et al.* The “sex gap” in COVID-19 trials: A scoping review. *EClinicalMedicine* **29**, 100652 (2020).
17. Penna, C., Mercurio, V., Tocchetti, C. G. & Pagliaro, P. Sex-related differences in COVID-19 lethality. *Br. J. Pharmacol.* **177**, 4375–4385 (2020).
18. Ahrenfeldt, L. J., Otavova, M., Christensen, K. & Lindahl-Jacobsen, R. Sex and age differences in COVID-19 mortality in Europe. Preprint at <https://doi.org/10.21203/rs.3.rs-61444/v1> (2020).

19. Mohamed, M. O. *et al.* Sex differences in mortality rates and underlying conditions for COVID-19 deaths in England and Wales. *Mayo Clin Proc.* **95**, 2110–2124 (2020).
20. Barbateskovic, M. *et al.* A new tool to assess clinical diversity in meta-analyses (CDIM) of interventions. *J. Clin. Epidemiol.* **135**, 29–41 (2021).
21. Rothman, K. J., Greenland, S. & Lash, T. L. *Modern Epidemiology* 3rd ed. (Lippincott Williams & Wilkins, 2008).
22. Conti, P. & Younes, A. Coronavirus COV-19/SARS-CoV-2 affects women less than men: Clinical response to viral infection. *J. Biol. Regul. Homeost. Agents* **34**, 339–343 (2020).
23. Cai, H. Sex difference and smoking predisposition in patients with COVID-19. *Lancet Respir. Med.* **8**, e20 (2020).
24. Wenham, C., Smith, J. & Morgan, R. COVID-19: The gendered impacts of the outbreak. *Lancet* **395**, 846–848 (2020).
25. Vincent, J. L. *et al.* COVID-19: What we've done well and what we could or should have done better-the 4 Ps. *Crit. Care.* **25**, 40 (2021).
26. Van Gassel, R. J. J. *et al.* High prevalence of pulmonary sequelae at 3 months after hospital discharge in mechanically ventilated COVID-19 survivors. *Am. J. Respir. Crit. Care Med.* **203**, 371–374 (2020).
27. Wiersinga, W. J., Rhodes, A., Cheng, A. C., Peacock, S. J. & Prescott, H. C. Pathophysiology, transmission, diagnosis, and treatment of coronavirus disease 2019 (COVID-19): A review. *JAMA* **324**, 782–793 (2020).
28. Chen, N. *et al.* Epidemiological and clinical characteristics of 99 cases of 2019 novel coronavirus pneumonia in Wuhan, China: A descriptive study. *Lancet* **395**, 507–513 (2020).
29. Abate, B. B., Kassie, A. M., Kassaw, M. W., Aragie, T. G. & Masresha, S. A. Sex difference in coronavirus disease (COVID-19): A systematic review and meta-analysis. *BMJ Open* **10**, e040129 (2020).
30. Karlberg, J., Chong, D. S. & Lai, W. Y. Do men have a higher case fatality rate of severe acute respiratory syndrome than women do? *Am. J. Epidemiol.* **159**, 229–231 (2004).
31. Alghamdi, I. G. *et al.* The pattern of Middle East respiratory syndrome coronavirus in Saudi Arabia: A descriptive epidemiological analysis of data from the Saudi Ministry of Health. *Int. J. Gen. Med.* **7**, 417–423 (2014).
32. Klang, E. *et al.* Sex differences in age and comorbidities for COVID-19 mortality in urban New York City. *SN Compr. Clin. Med.* **1–4** (2020).
33. Wang, Y. *et al.* Remdesivir in adults with severe COVID-19: A randomised, double-blind, placebo-controlled, multicentre trial. *Lancet* **395**, 1569–1578 (2020).
34. Yanez, N. D., Weiss, N. S., Romand, J. A. & Treggiari, M. M. COVID-19 mortality risk for older men and women. *BMC Public Health* **20**, 1742 (2020).
35. Wu, C. *et al.* Risk factors associated with acute respiratory distress syndrome and death in patients with coronavirus disease 2019 pneumonia in Wuhan, China. *JAMA Intern. Med.* **180**, 934–943 (2020).
36. Zhou, F. *et al.* Clinical course and risk factors for mortality of adult inpatients with COVID-19 in Wuhan, China: A retrospective cohort study. *Lancet* **395**, 1054–1062 (2020).
37. Richardson, S. *et al.* Presenting characteristics, comorbidities, and outcomes among 5700 patients hospitalized with COVID-19 in the New York City Area. *JAMA* **323**, 2052–2059 (2020).
38. Knaus, W. A., Draper, E. A., Wagner, D. P. & Zimmerman, J. E. APACHE II: A severity of disease classification system. *Crit. Care Med.* **13**, 818–829 (1985).
39. The, L. The gendered dimensions of COVID-19. *Lancet* **395**, 1168 (2020).
40. Pradhan, A. & Olsson, P. E. Sex differences in severity and mortality from COVID-19: Are males more vulnerable? *Biol. Sex Differ.* **11**, 53 (2020).
41. Pivonello, R. *et al.* Sex disparities in Covid-19 severity and outcome: Are men weaker or women stronger? *Neuroendocrinology* **111**, 1066–1085 (2020).
42. Hoffmann, M. *et al.* SARS-CoV-2 cell entry depends on ACE2 and TMPRSS2 and is blocked by a clinically proven protease inhibitor. *Cell* **181**, 271–280.e8 (2020).
43. Zhao, Y. *et al.* Single-cell RNA expression profiling of ACE2, the receptor of SARS-CoV-2. *Am. J. Respir. Crit. Care Med.* **202**, 756–759 (2020).
44. Sun, M. *et al.* Sex differences in viral entry protein expression, host responses to SARS-CoV-2, and in vitro responses to sex steroid hormone treatment in COVID-19. Preprint at <https://doi.org/10.21203/rs.3.rs-100914/v1> (2020).
45. Gross, S., Jahn, C., Cushman, S., Bar, C. & Thum, T. SARS-CoV-2 receptor ACE2-dependent implications on the cardiovascular system: From basic science to clinical implications. *J. Mol. Cell Cardiol.* **144**, 47–53 (2020).
46. Xu, K. *et al.* Factors associated with prolonged viral RNA shedding in patients with coronavirus disease 2019 (COVID-19). *Clin. Infect. Dis.* **71**, 799–806 (2020).
47. Zheng, S. *et al.* Viral load dynamics and disease severity in patients infected with SARS-CoV-2 in Zhejiang province, China, January–March 2020: Retrospective cohort study. *BMJ* **369**, m1443 (2020).
48. Scully, E. P., Haverfield, J., Ursin, R. L., Tannenbaum, C. & Klein, S. L. Considering how biological sex impacts immune responses and COVID-19 outcomes. *Nat. Rev. Immunol.* **20**, 442–447 (2020).
49. Takahashi, T. *et al.* Sex differences in immune responses that underlie COVID-19 disease outcomes. *Nature* **588**, 315–320 (2020).
50. Takahashi, T. & Iwasaki, A. Sex differences in immune responses. *Science* **371**, 347–348 (2021).
51. Viveiros, A. *et al.* Sex differences in COVID-19: Candidate pathways, genetics of ACE2, and sex hormones. *Am. J. Physiol. Heart Circ. Physiol.* **320**, H296–H304 (2021).
52. White, I. R., Royston, P. & Wood, A. M. Multiple imputation using chained equations: Issues and guidance for practice. *Stat. Med.* **30**, 377–399 (2011).
53. Lee, K. J. *et al.* Framework for the treatment and reporting of missing data in observational studies: The treatment and reporting of missing data in observational studies framework. *J. Clin. Epidemiol.* **134**, 79–88 (2021).
54. Kenward, M. G. & Carpenter, J. Multiple imputation: Current perspectives. *Stat. Methods Med. Res.* **16**, 199–218 (2007).
55. Carpenter, J. R. & Smuk, M. Missing data: A statistical framework for practice. *Biom. J.* **63**, 915–947 (2021).
56. Wunsch, H., Linde-Zwirble, W. T. & Angus, D. C. Methods to adjust for bias and confounding in critical care health services research involving observational data. *J. Crit. Care.* **21**, 1–7 (2006).
57. Groenwold, R. H. *et al.* Adjustment for continuous confounders: An example of how to prevent residual confounding. *CMAJ* **185**, 401–406 (2013).
58. Royston, P., Altman, D. G. & Sauerbrei, W. Dichotomizing continuous predictors in multiple regression: A bad idea. *Stat. Med.* **25**, 127–141 (2006).
59. Price-Haywood, E. G., Burton, J., Fort, D. & Seoane, L. Hospitalization and mortality among black patients and white patients with Covid-19. *N. Engl. J. Med.* **382**, 2534–2543 (2020).
60. Williamson, E. J. *et al.* Factors associated with COVID-19-related death using OpenSAFELY. *Nature* **584**, 430–436 (2020).
61. Griffith, G. J. *et al.* Collider bias undermines our understanding of COVID-19 disease risk and severity. *Nat. Commun.* **11**, 5749 (2020).
62. Munafo, M. R., Tilling, K., Taylor, A. E., Evans, D. M. & Davey Smith, G. Collider scope: When selection bias can substantially influence observed associations. *Int. J. Epidemiol.* **47**, 226–235 (2018).
63. Tas, J. *et al.* Serial measurements in COVID-19-induced acute respiratory disease to unravel heterogeneity of the disease course: Design of the Maastricht Intensive Care COVID cohort (MaastricCht). *BMJ Open* **10**, e040175 (2020).

64. Prokop, M. *et al.* CO-RADS: A categorical CT assessment scheme for patients suspected of having COVID-19-definition and evaluation. *Radiology* **296**, E97–E104 (2020).
65. Perkins, N. J. *et al.* Principled approaches to missing data in epidemiologic studies. *Am. J. Epidemiol.* **187**, 568–575 (2018).

Author contributions

Conceptualization and study design: D.M., I.C.C.v.d.H., B.C.T.v.B., G.M., C.G.-D.; Data curation: B.C.T.v.B., D.A.M.M., CoDaP investigators; Formal Analysis: B.C.T.v.B., D.A.M.M.; Funding acquisition: D.M., G.M., I.C.C.v.d.H., B.S., B.C.T.v.B.; Investigation: A.H., J.M.-S., C.I.E.S.; Methodology: B.C.T.v.B., I.C.C.v.d.H., S.A.E.P., C.G.-D.; Resources: CoDaP investigators; Supervision: B.C.T.v.B., I.C.C.v.d.H., C.G.-D.; Validation: B.C.T.v.B., D.A.M.M.; Visualisation: B.C.T.v.B., D.A.M.M.; Writing—original draft: C.G.-D., D.A.M.M., B.C.T.v.B.; Writing—review & editing: D.A.M.M., B.C.T.v.B., B.S., J.M.-S., A.H., C.I.E.S., S.A.E.P., W.N.K.A.v.M., I.C.C.v.d.H., G.M., D.M., C.G.-D., CoDaP Investigators.

Funding

Our study was supported by the "Interreg Euregio Meuse-Rhine" (Covid Data Platform (CoDaP) Grant: Interreg-EMR 187). Funding sources were not involved in the study design, data collection, data analysis, data interpretation, writing process, and decision to submit for publication. Researchers were independent of funders, and all authors had full data access.

Competing interests

The authors declare no competing interests.

Additional information

Supplementary Information The online version contains supplementary material available at <https://doi.org/10.1038/s41598-021-04531-x>.

Correspondence and requests for materials should be addressed to D.A.M.M.

Reprints and permissions information is available at www.nature.com/reprints.

Publisher's note Springer Nature remains neutral with regard to jurisdictional claims in published maps and institutional affiliations.



Open Access This article is licensed under a Creative Commons Attribution 4.0 International License, which permits use, sharing, adaptation, distribution and reproduction in any medium or format, as long as you give appropriate credit to the original author(s) and the source, provide a link to the Creative Commons licence, and indicate if changes were made. The images or other third party material in this article are included in the article's Creative Commons licence, unless indicated otherwise in a credit line to the material. If material is not included in the article's Creative Commons licence and your intended use is not permitted by statutory regulation or exceeds the permitted use, you will need to obtain permission directly from the copyright holder. To view a copy of this licence, visit <http://creativecommons.org/licenses/by/4.0/>.

© The Author(s) 2022

CoDaP investigators

Nanon F. L. Heijnen¹, Johannes Bickenbach¹², Meta C. E. van der Woude⁶, Anne Raafs¹⁵, Sander M. J. van Kuijk^{3,17}, Luc J. M. Smits^{1,3}, Emma B. N. J. Janssen¹⁵, Noëlla Pierlet¹³, Ben Goethuys¹³, Jonas Bruggen¹³, Gilles Vermeiren¹³, Hendrik Vervloessem¹³, Mark M. G. Mulder¹, Marcel Koelmann¹, Julia L. M. Bels¹, Laura Bormans-Russell⁶, Micheline C. D. M. Florack^{1,6}, Willem Boer¹³ & Margot Vander Laenen¹³

¹⁷Present address: Department of Clinical Epidemiology and Medical Technology Assessment, Maastricht UMC+, Maastricht, the Netherlands.