

The logo for CAiSE'22 features the text "CAiSE'22" in a bold, red, sans-serif font. A small, 3D-style cube icon is positioned above the letter 'i'.

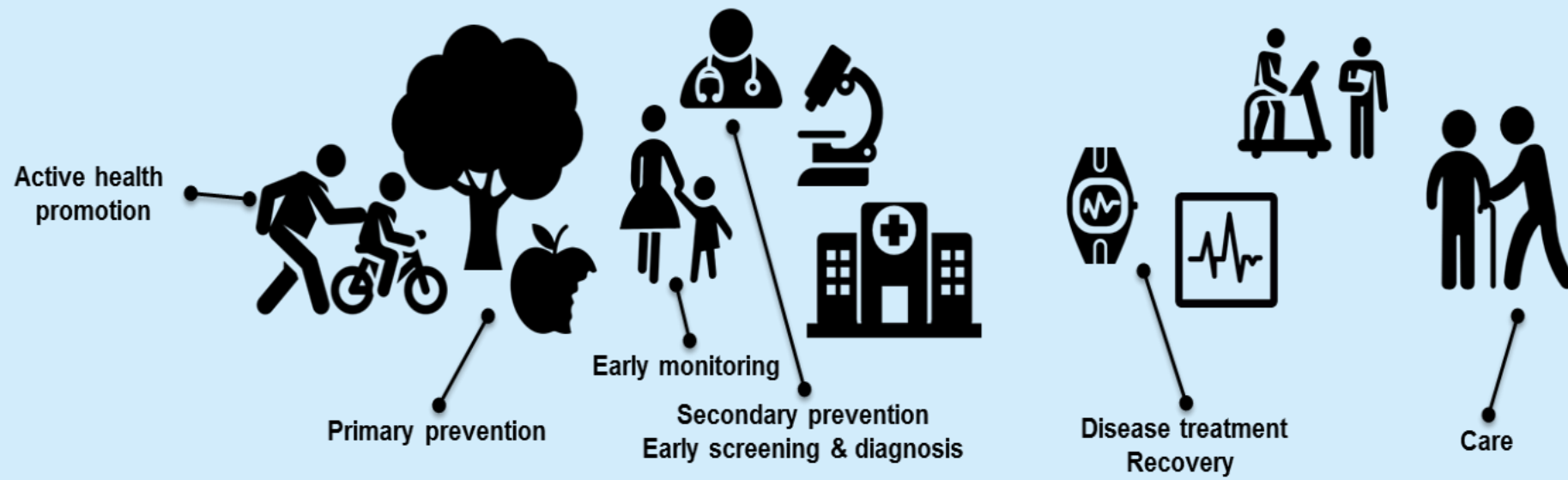
**34th International Conference
on Advanced
Information Systems Engineering**

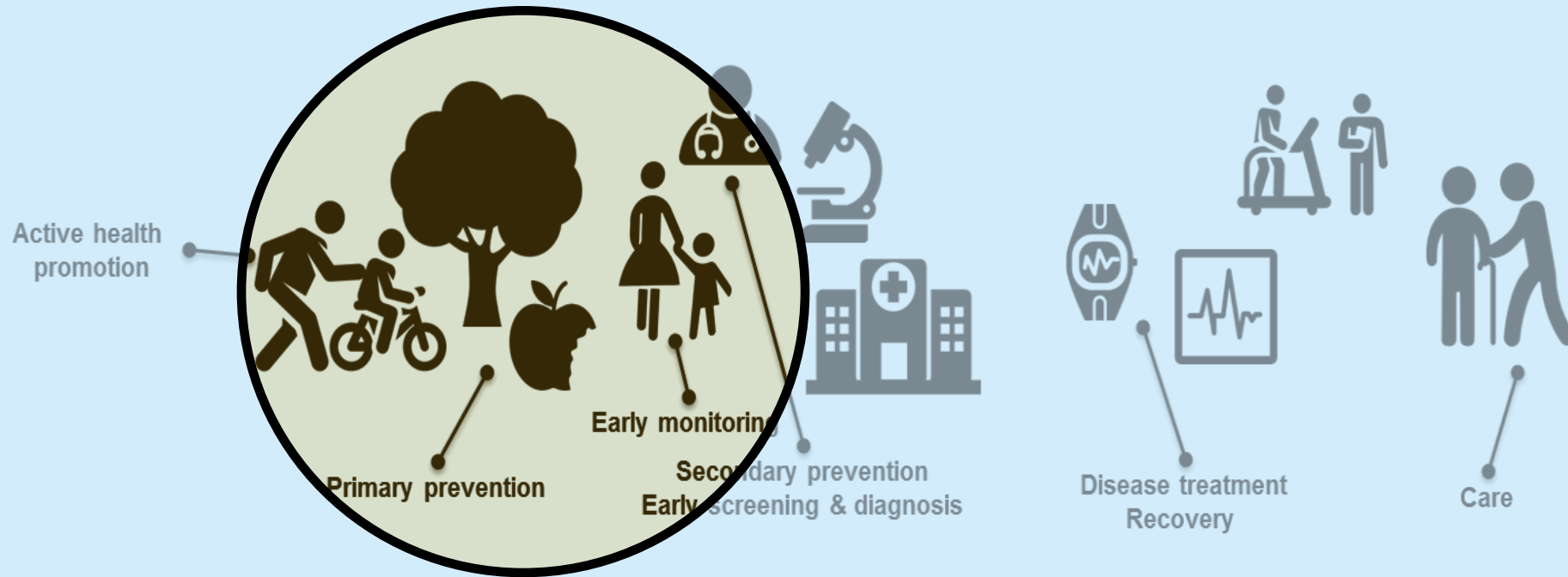
06/06/2022 - 10/06/2022, LEUVEN 2022

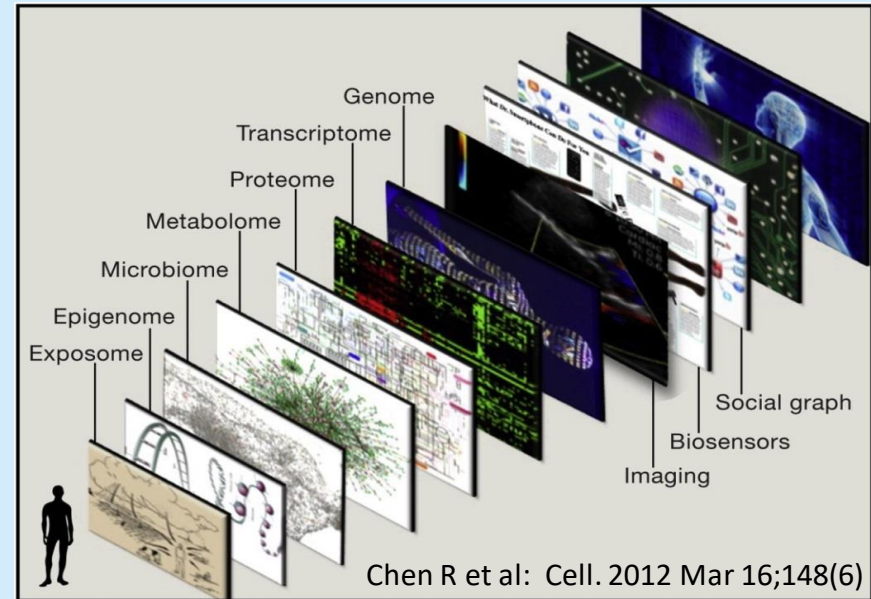
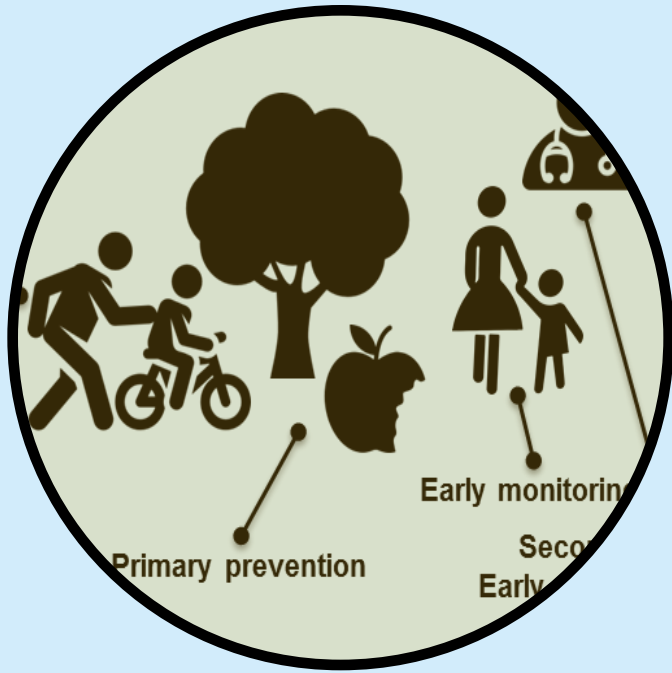
JUNE 9: 09:30 - 10:30
MTC - LARGE AULA

**A CITIZEN-DRIVEN
ECOSYSTEM FOR
PERSONAL HEALTH DATA**

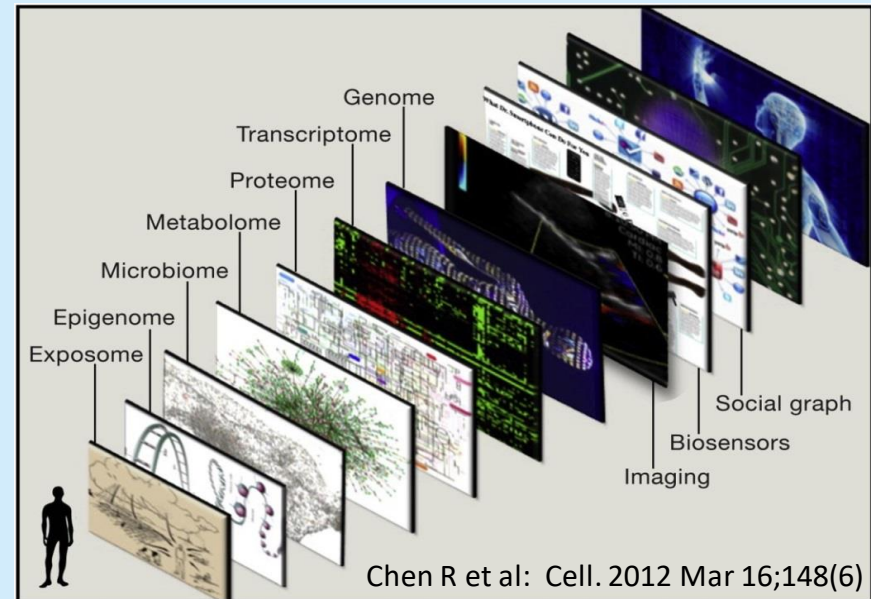
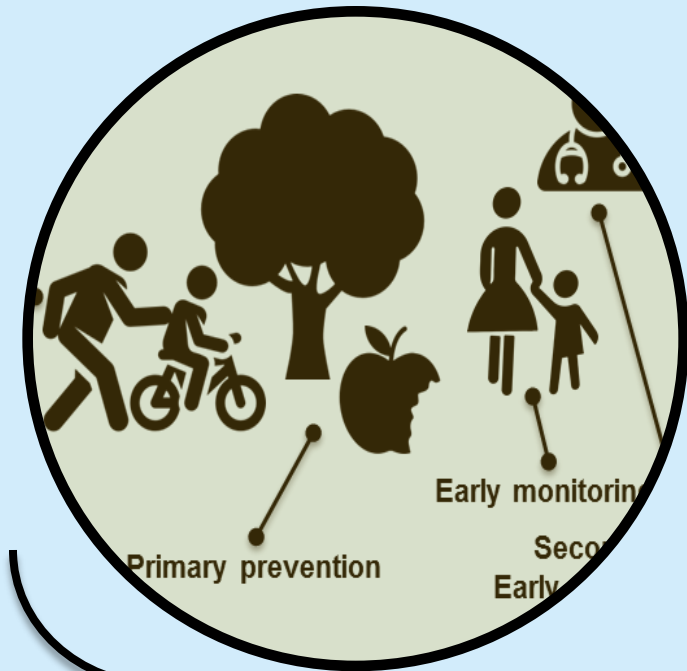
Jef Hooyberghs, VITO - UHasselt







INTEGRATIVE PERSONAL OMICS PROFILE

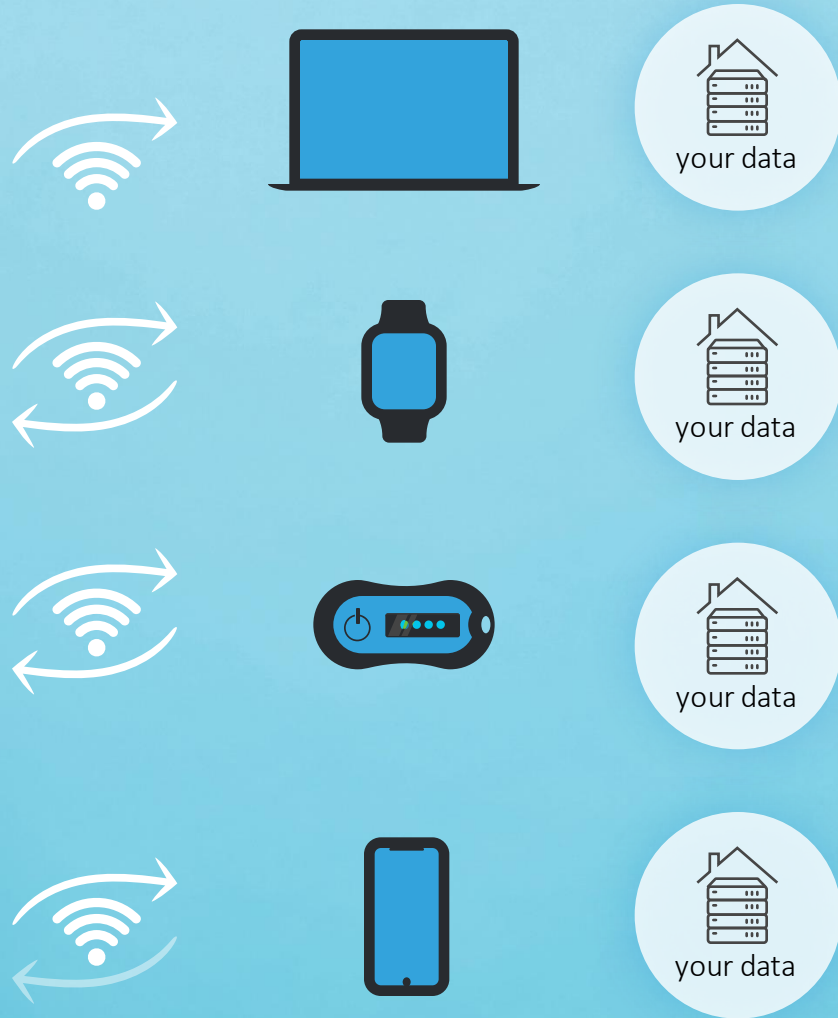


DATA DRIVEN PREVENTION

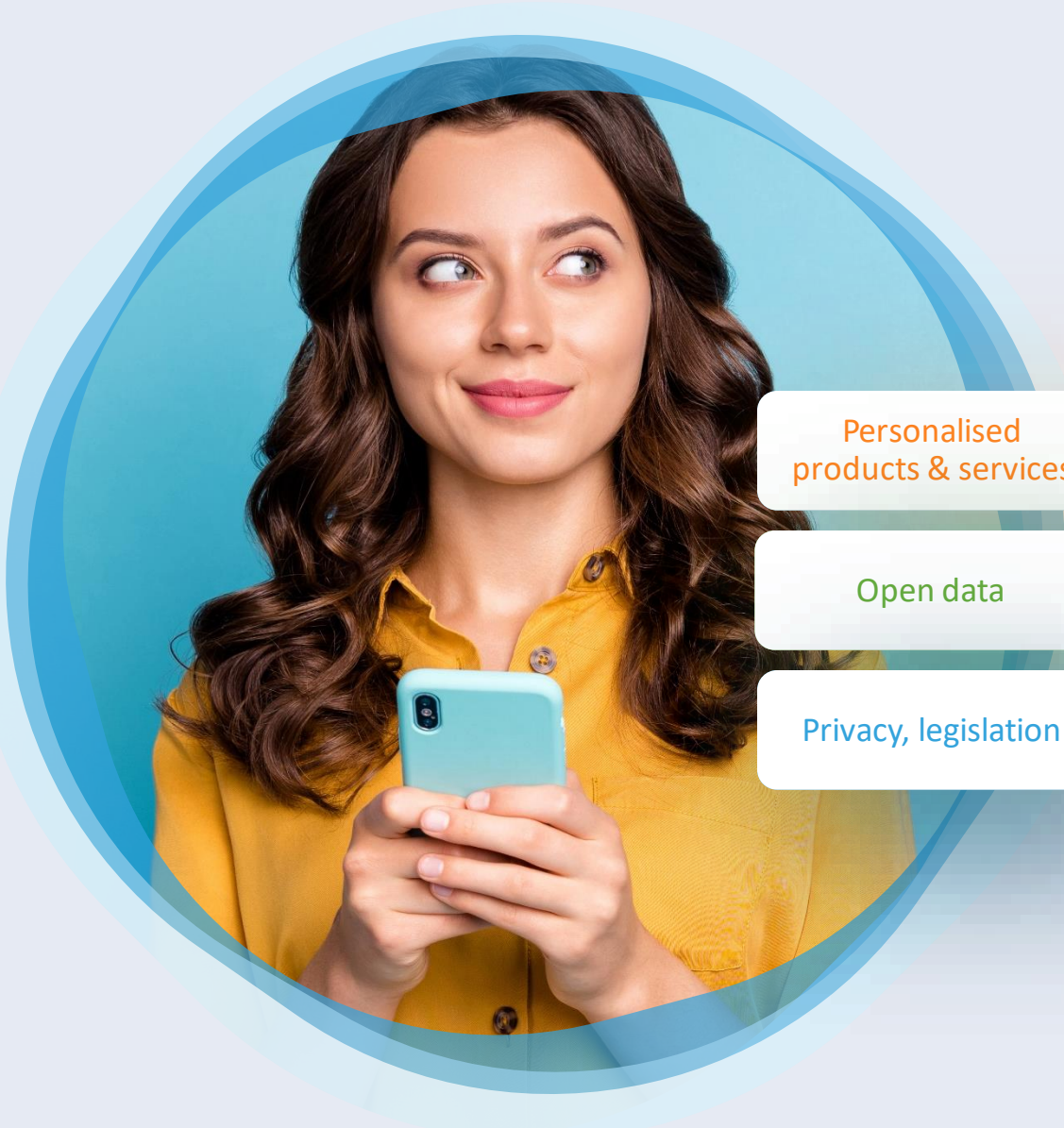
HIGHLY DIVERSE SET OF DATA

INDIVIDUAL DATA

LONGITUDINAL DATA



CURRENT ECOSYSTEM = APPLICATION-CENTRIC



Personalised products & services

Open data

Privacy, legislation



Data economy



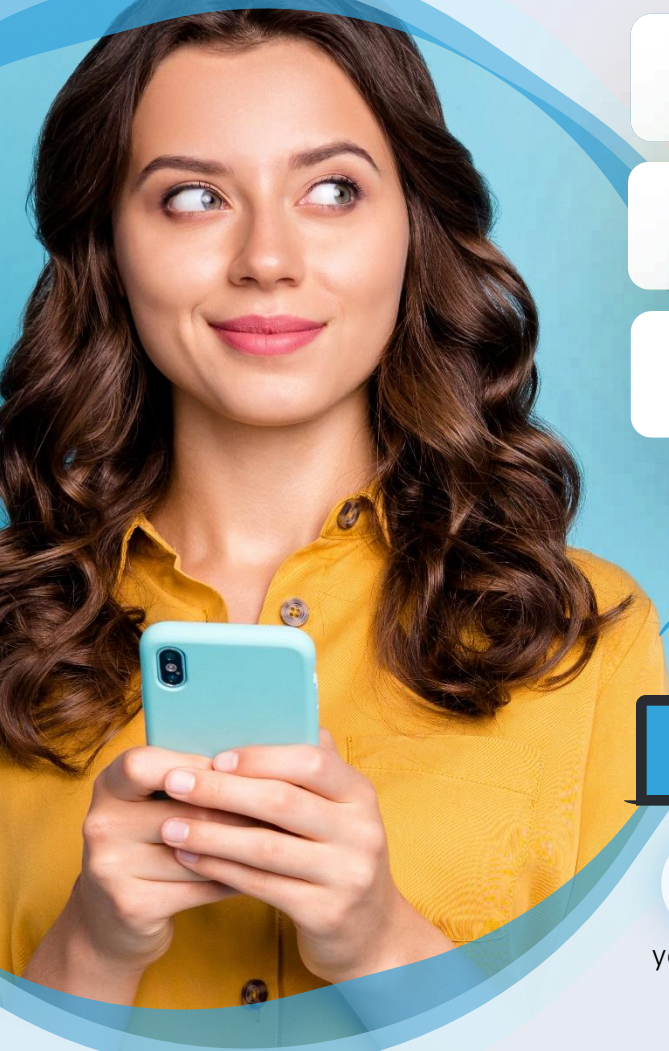
Innovation



Protect & engage end users

SOCIO-ECONOMIC TRENDS

Global & European

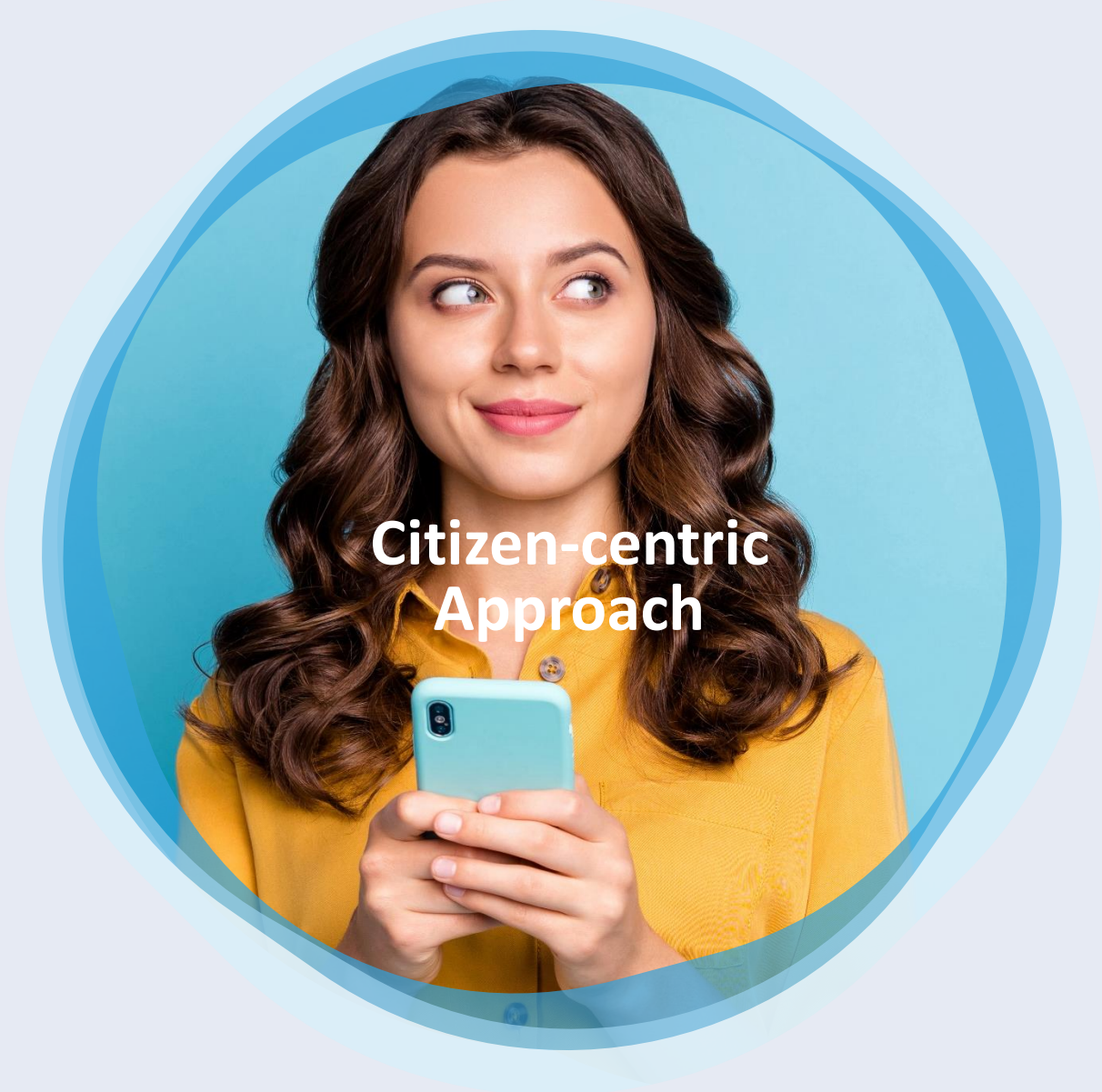


- Counteracting trends
- Ethical issues
- Oligopoly
- ...

Application-centric

SOCIO-ECONOMIC TRENDS

Global & European

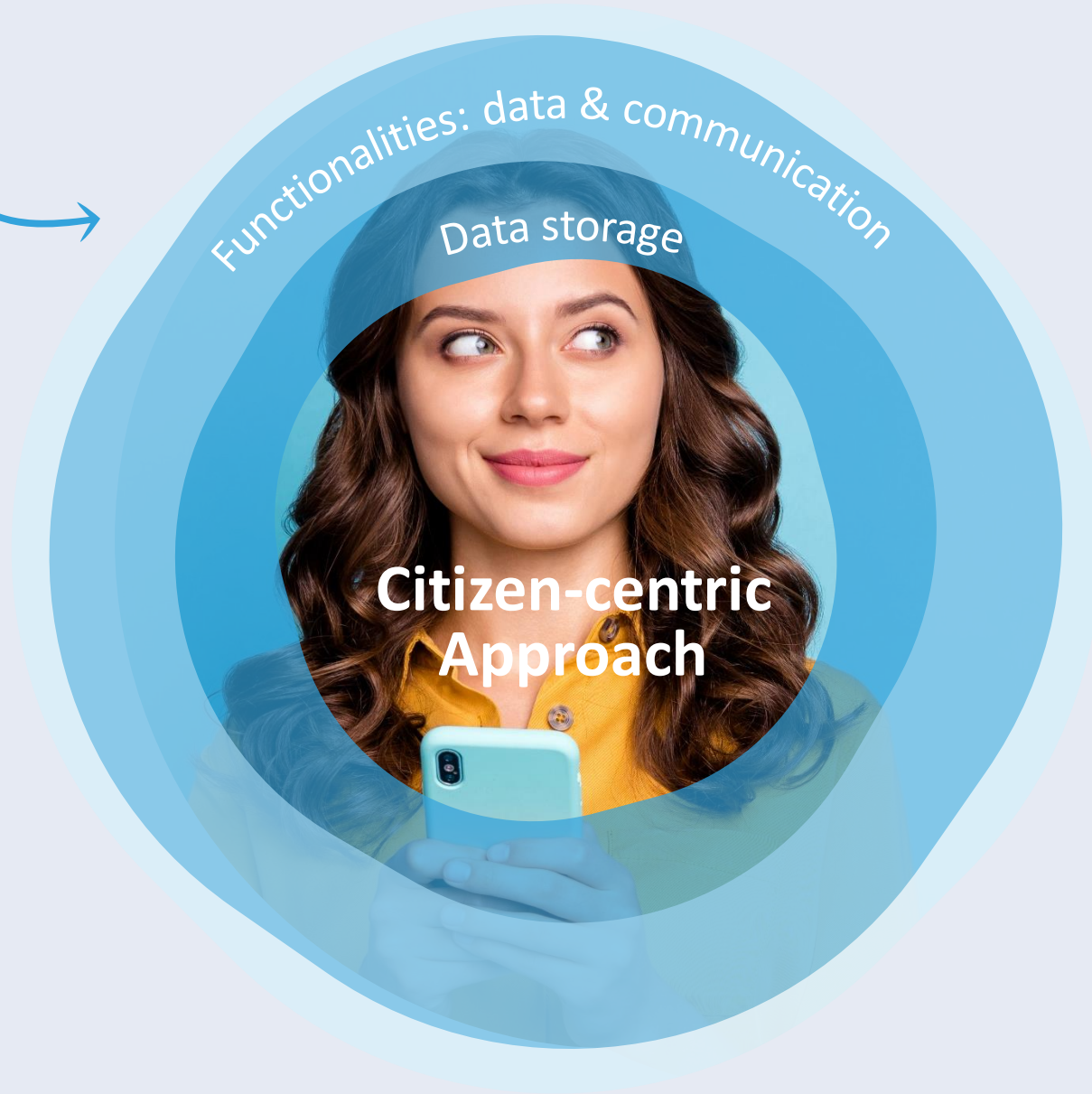


**Citizen-centric
Approach**

**CITIZEN-
CENTRIC
ECOSYSTEM**



Creation and capture of personal health data



Functionalities: data & communication

Data storage

Citizen-centric Approach

CITIZEN-CENTRIC ECOSYSTEM



Creation and capture of personal health data



CONSENT



R&D innovation

Academia

Civil Society

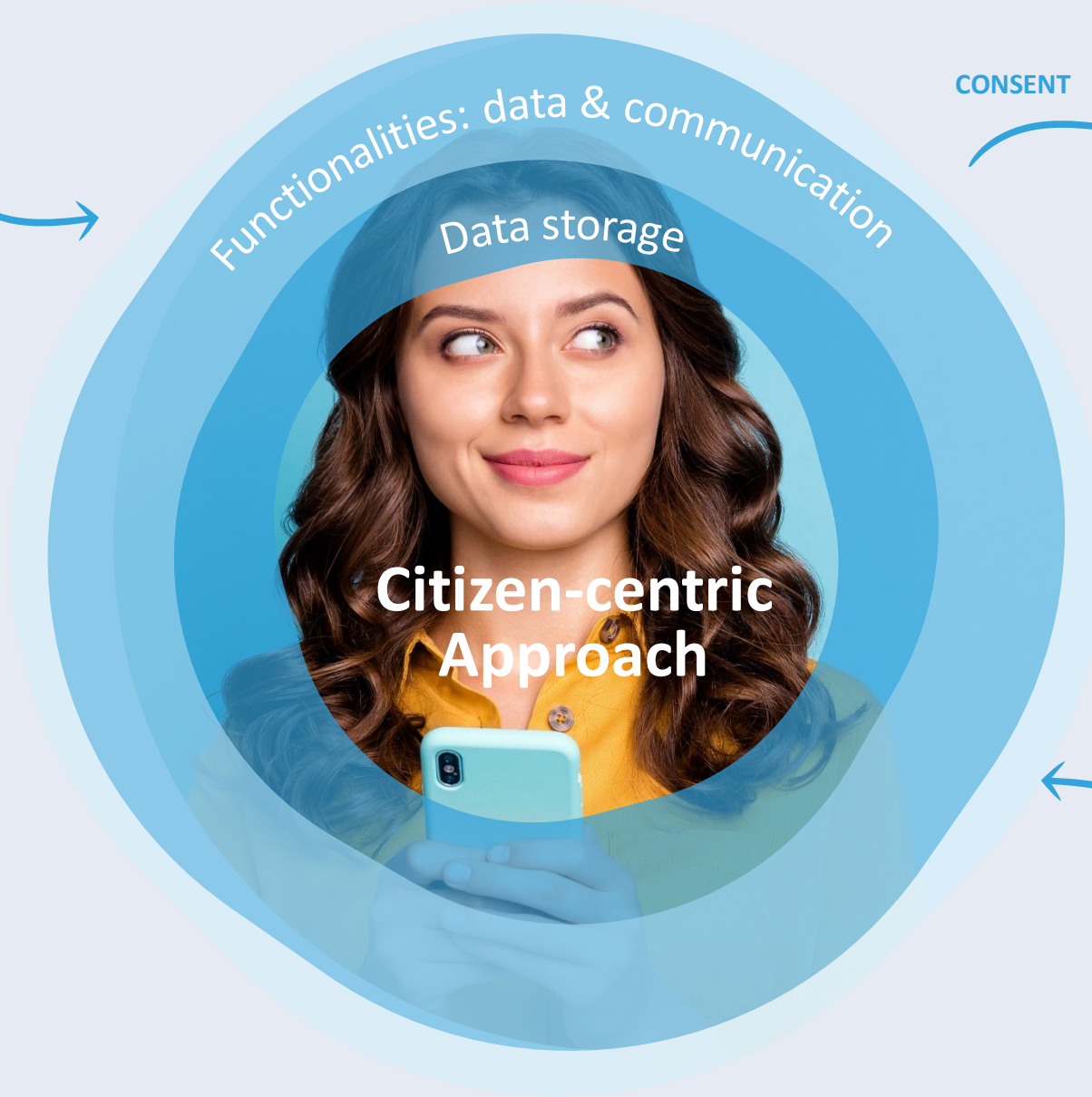
Public authorities

Industry

CITIZEN-CENTRIC ECOSYSTEM



Creation and capture of personal health data



CONSENT



R&D innovation

Academia

Civil Society

Public authorities

Industry

CITIZEN-CENTRIC ECOSYSTEM



Personalised products & services

SEPARATION OF DATA & SERVICE
DATA ACCESS, NOT DATA GOVERNANCE



R&D innovation

Open innovation ecosystem

Systematic user co-creation approach

Integration innovation in real life

Operates as intermediary among companies, citizens, research & government

Rapid prototyping and validation to scale up

A LEVEL PLAYING FIELD



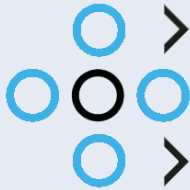
Personalised products & services



R&D innovation



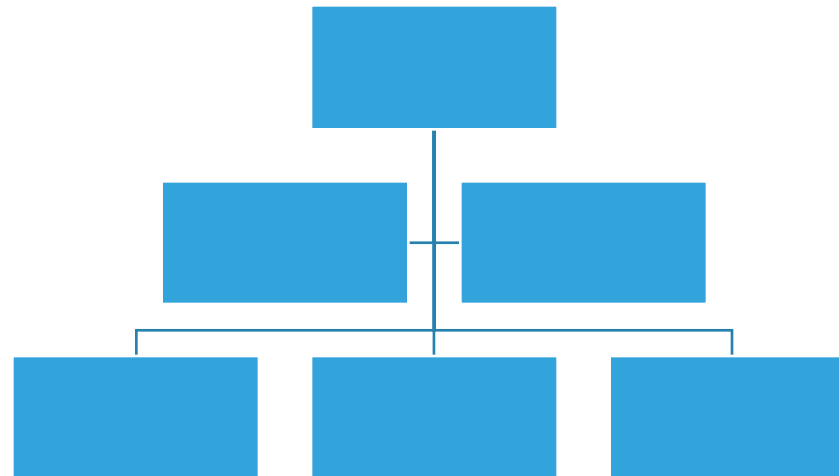
Personalised products & services



we are

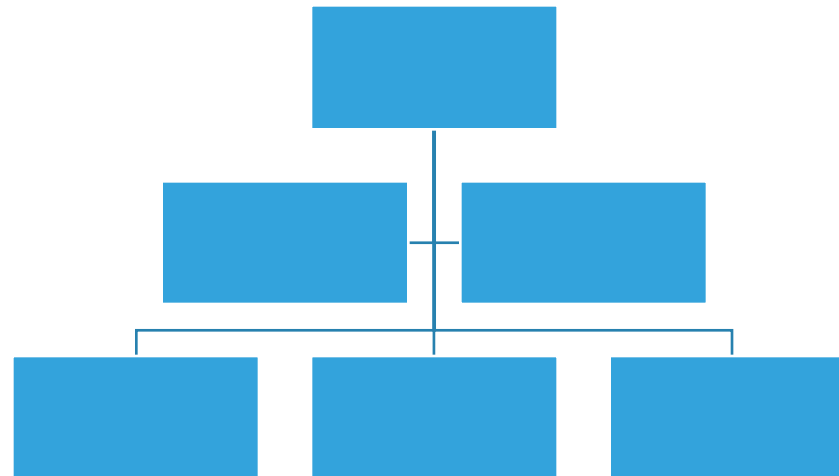
LOCAL - FLANDERS - INTERREGIONAL

 we are



LOCAL - FLANDERS - INTERREGIONAL

 we are



INTERREGIONAL



**VANGUARD
INITIATIVE**

SMART HEALTH

PERSONAL DATA
MANAGEMENT PLATFORM



DEPARTEMENT
ECONOMIE
WETENSCHAP &
INNOVATIE

Sharing personal data? We do it every day and more and more often. **But what happens next with that data?** Flemish Minister of Innovation Hilde Crevits is now co-investing in the development of an Interregional Platform for Personal Data containing a personal digital safe. Flemish Research Centre VITO is developing the system and is further developing it in a broader partnership



INTERREGIONAL

we are

VANGUARD INITIATIVE

SMART HEALTH

PERSONAL DATA MANAGEMENT PLATFORM

Inter-regional platform

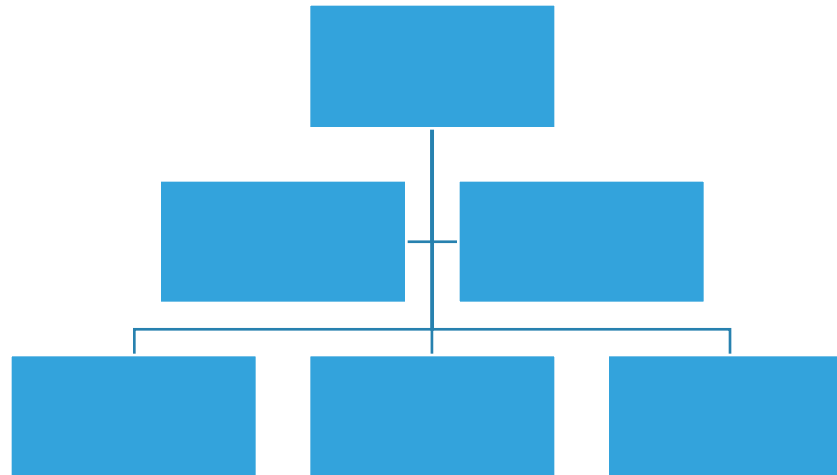


Regional ecosystems

- Regional Innovation Nodes
- Flanders
- East Netherlands
- Northern Ostrobothnia
- ...

LOCAL - FLANDERS - INTERREGIONAL

 we are



PARTNERSHIP

 we are

DOMUS
MEDICA

zorg net
ICURO

 vito

Vlaams
Patiëntenplatform

 B | Koning
Boudewijnstichting
Samen werken aan een betere samenleving

POLICY DOMAINS



INNOVATION



DEPARTEMENT
ECONOMIE
WETENSCHAP &
INNOVATIE

HEALTH



DEPARTEMENT
WELZIJN
VOLKSGEZONDHEID
EN GEZIN

DIGITIZATION



DIGITAAL
VLAANDEREN



we are



- A citizen-centric ecosystem

Empowerment

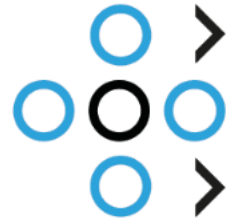


we are



- A citizen-centric ecosystem
- Separating data from applications

Digital Technology



we are



- A citizen-centric ecosystem
- Separating data from applications
- **Shaping applications**

Innovation



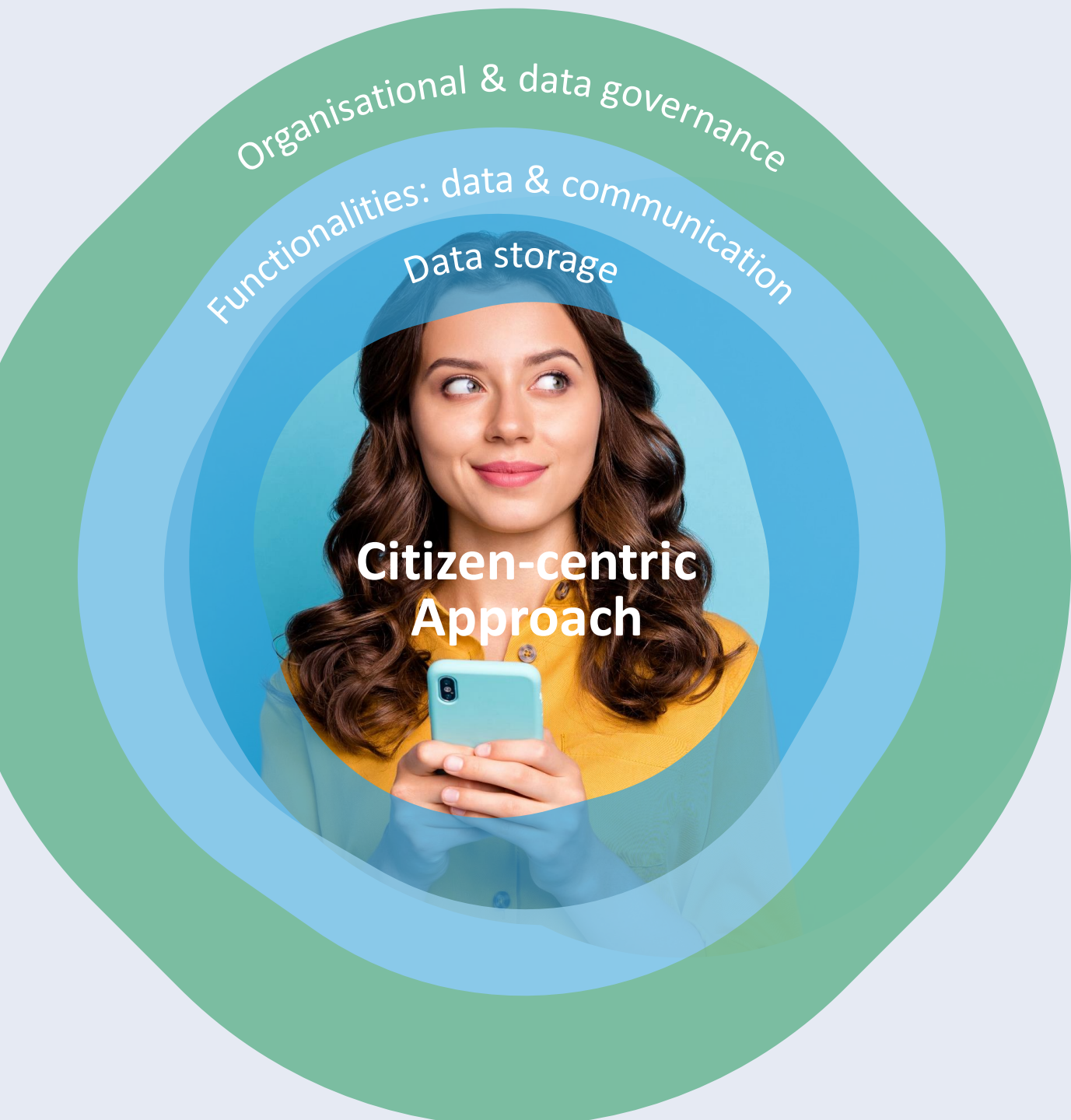
we are



- **A citizen-centric ecosystem**

Empowerment

- Separating data from applications
- Shaping applications



TRUST

 **we are**

Organisational & data governance

Functionalities: data & communication

Data storage

Citizen-centric Approach



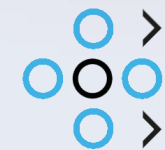
GUIDING PRINCIPLES



Synergy
Privacy &
Innovation

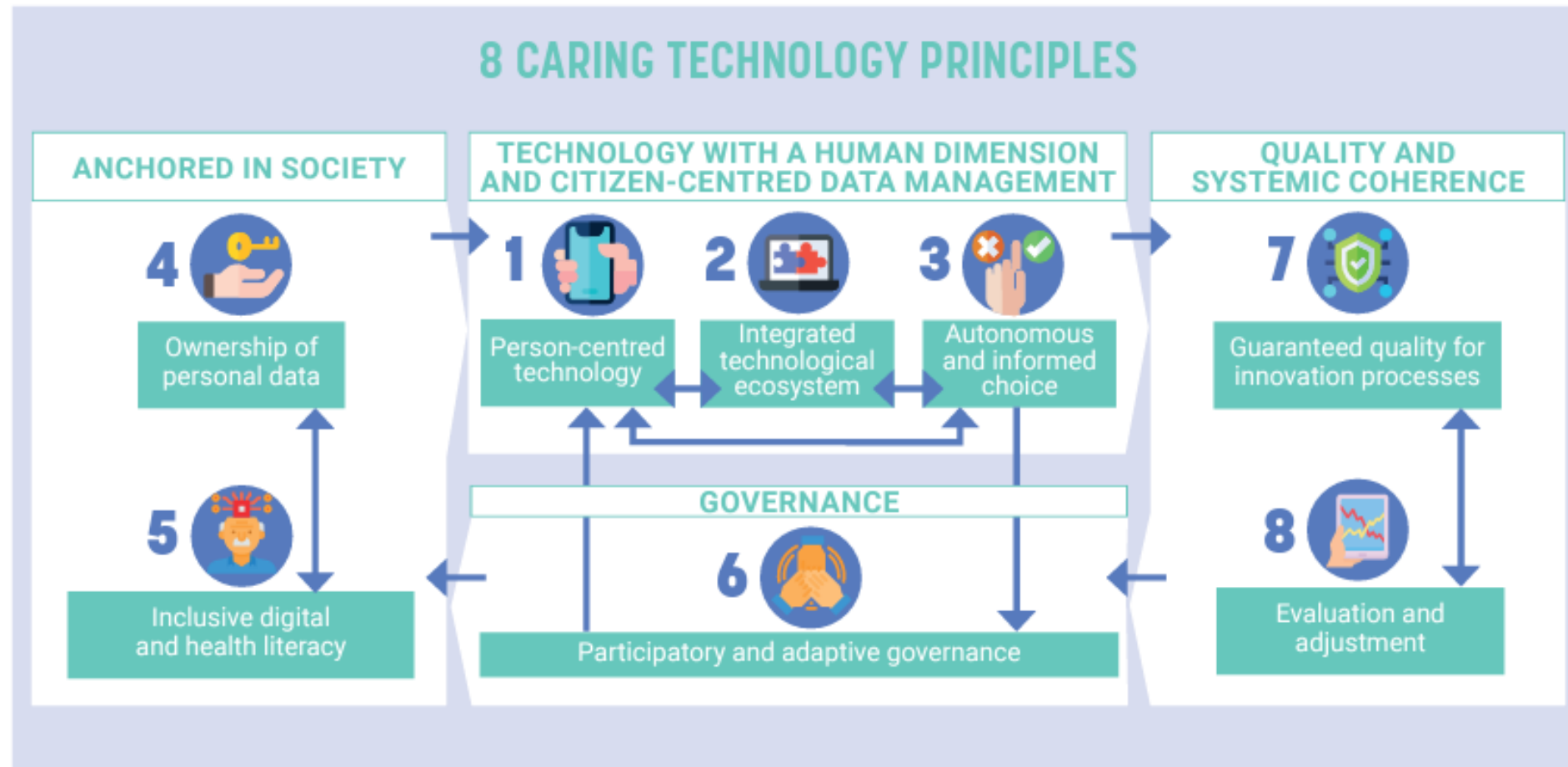
Participatory
Governance

TRUST



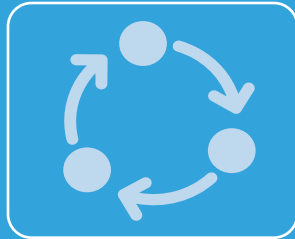
we are

FRAMEWORK OF CARING TECHNOLOGY PRINCIPLES: 8 GUIDING PRINCIPLES



<https://www.fondsdanieldeconinck.be/initiative/caring-technology/?lang=en>

BLUEPRINT RESPONDS TO NEEDS AND CHALLENGES



Blueprint process guidance

- Objective decision making
- Making principles practical



Good practices

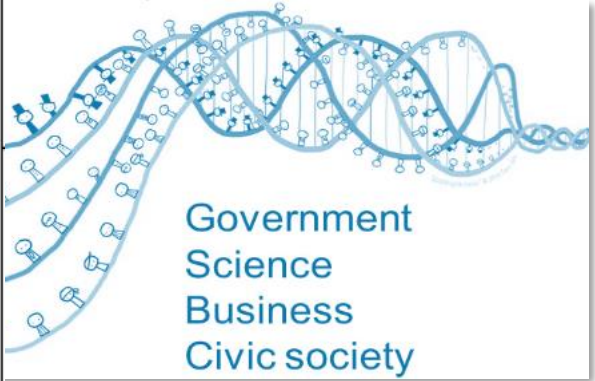
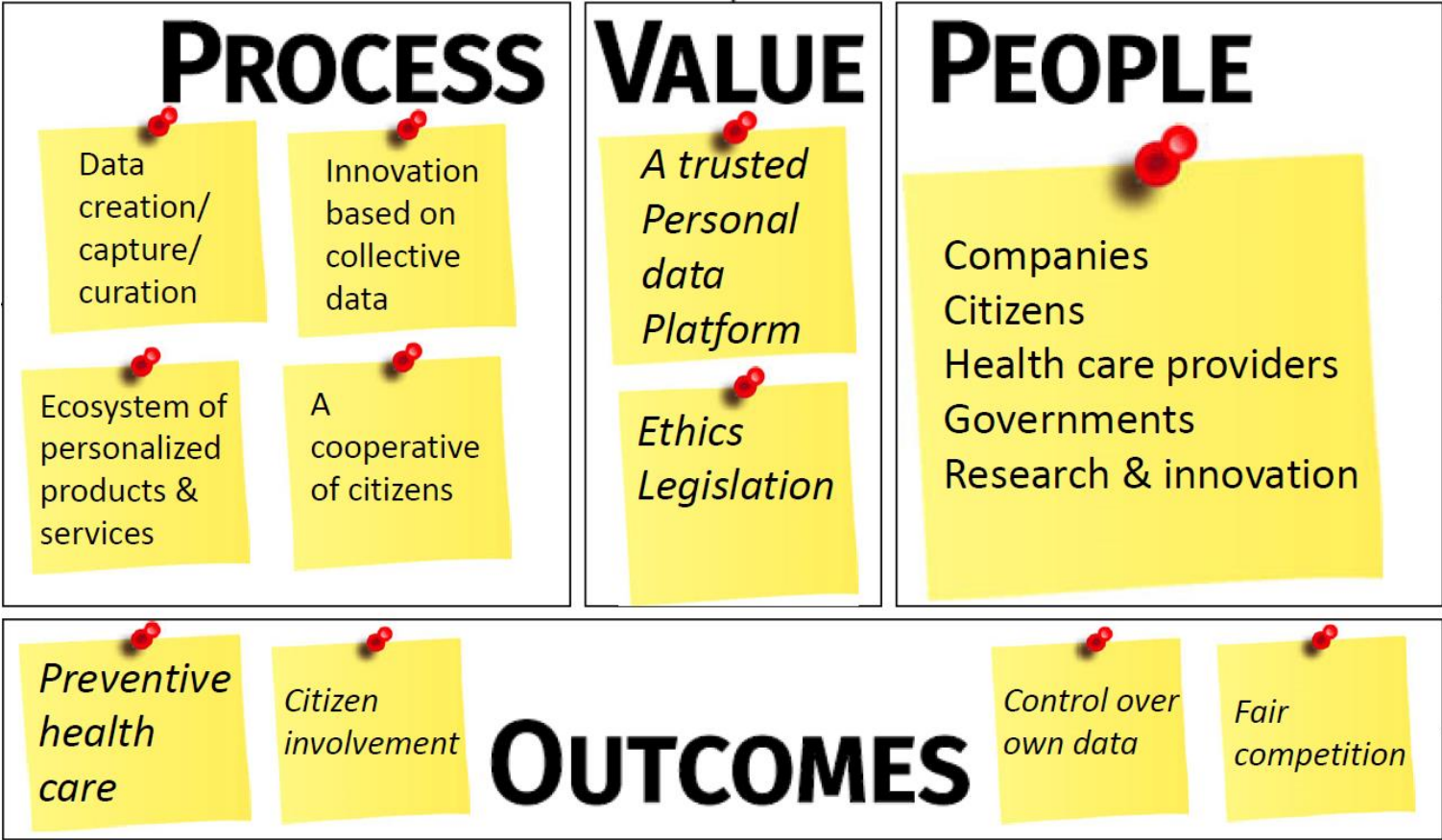
- Learning to deal with modern technology
- Tech affordability
- Resistance to innovations
- ...



Workshops with management, workforce, ...

- Idea implementation within organisation
- Gap between end-user and developer
- Tech integration

BUSINESS MODEL OF GOVERNANCE (ECOSYSTEM)





we are



- A citizen-centric ecosystem
- Separating data from applications
- Shaping applications

Digital Technology

Data storage

Citizen-centric Approach



Move freely
between services



Reuse data across
APPS

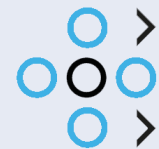


Connect with anyone



Select what you
share precisely

TECHNOLOGY



we are

Vague but exciting ...

CERN DD/OC

Tim Berners-Lee, CERN/DD

Information Management: A Proposal

March 1989

Information Management: A Proposal

Abstract

This proposal concerns the management of general information about accelerators and experiments at CERN. It discusses the problems of loss of information about complex evolving systems and derives a solution based on a distributed hypertext system.

First web page online 1990

Anyone can use the web

Decentralized architecture

Developers free to innovate

Royalty-free (decision by CERN 1993)

World Wide Web Consortium “W3C” for standardization

First web page online 1990

Anyone can use the web

Decentralized architecture

Developers free to innovate

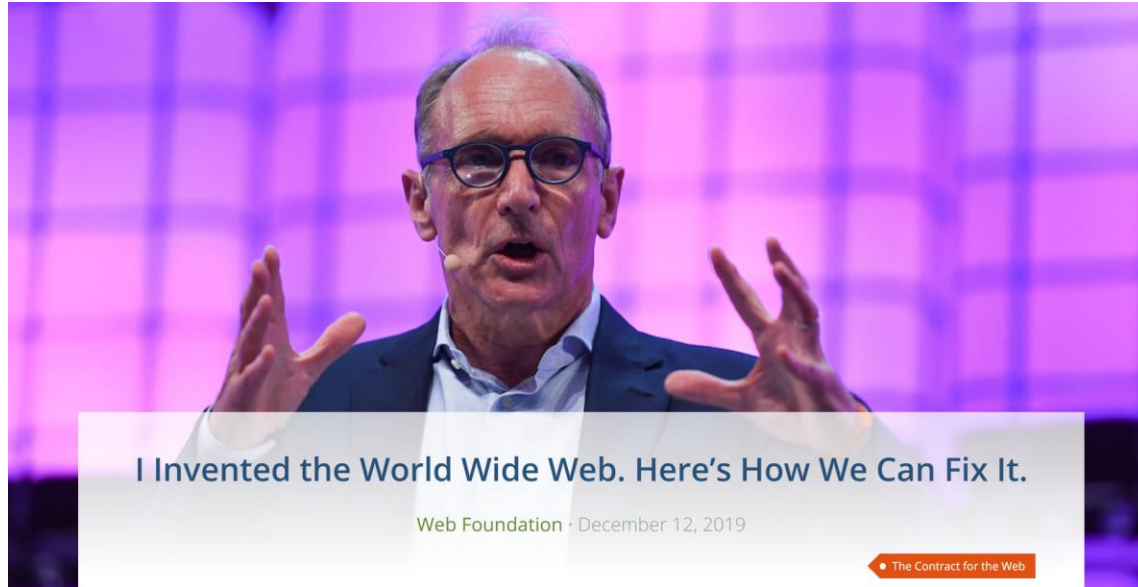
Royalty-free (decision by CERN 1993)

World Wide Web Consortium “W3C” for standardization

CONVERGENCE: platforms and companies that combine and bundle many web-based services

- Loss of personal data to large organizations
- Loss of individual control of personal data
- Loss of level playing field, innovation

"FIXING THE WEB"



<https://webfoundation.org/2019/12/i-invented-the-world-wide-web-heres-how-we-can-fix-it/>



<https://contractfortheweb.org/>



<https://solidproject.org/>

SOLID

is a technical specification and architecture

- Originating from MIT
- Combination of W3C standards
- Builds on top of the existing Web

that lets people store their data securely in decentralized data stores called Pods.



A SOLID POD is

A website with data

Hosted by a webserver

Application agnostic interface

Can contain any data

Comply with Linked Data standards and using RDF

Technological challenges

- How do I run my Pod?
- How do I keep track of my data sharing connections?
- Can a partner also query my data directly?
- Can I delegate my data sharing to a trusted partner?

Technological challenges

- How do I run my Pod?

Pod providers: companies or organizations that host your Pod

- commercial
- government public service
- Flanders -> Data Utility Company

Technological challenges

- How do I keep track of my data sharing connections?

Via your Web Agent, software layer around your Pod

Theoretical Example: Facebook on Solid

You tell your web agent to give FB access to the “Facebook” part of your Pod
You put your posts and comments in your Pod
Web agent notifies FB of new updates

What’s the difference?

Original, and up-to-date, data, resides with you, under your control
You can switch to a FB competitor any time

Technological challenges

- Can a partner also query my data directly?

Effective querying of data assumes:

a data model (relational, XML, RDF, JSON, graph, ...)

a query language (SQL, XPath, SPARQL, ...)

agreement on form, organization, structure of data (**schema**)

Example: Facebook

FB advertises a schema in which they expect your posts and comments

Data in your Pod may be organized differently!

You may be using more than one app for your posts

Technological challenges

- Can a partner also query my data directly?

Mediator

Software that performs schema mapping

Transforms source schema to some target schema
POD query

Schema mapping serves double purpose: also restrict data sharing

Web community is building a schema mapping language standard

Technological challenges

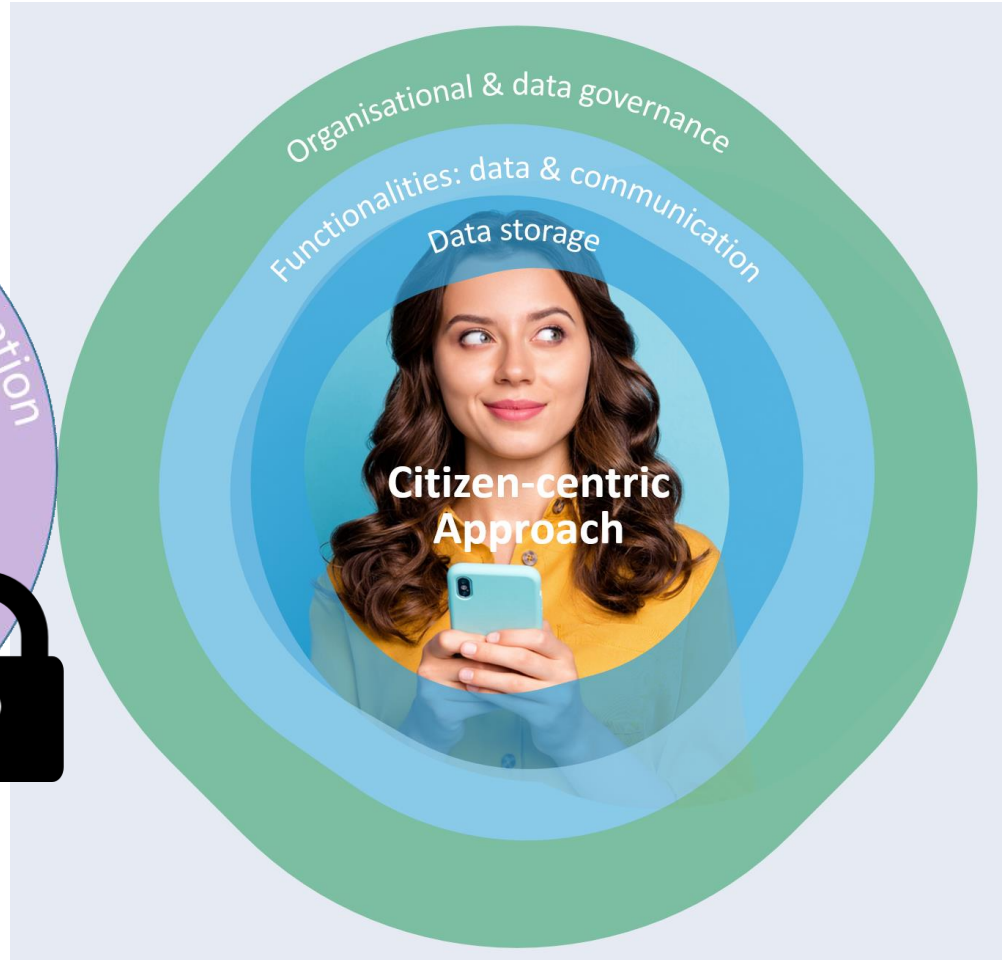
- Can I delegate my data sharing to a trusted partner?

Sure!

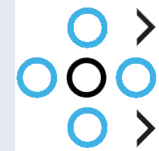
Decentralized web of personal data can be a true network

Citizens can give (partly, conditional, ...) access to an aggregator

That aggregator can then negotiate in the name of its clients with further partners



TECHNOLOGY

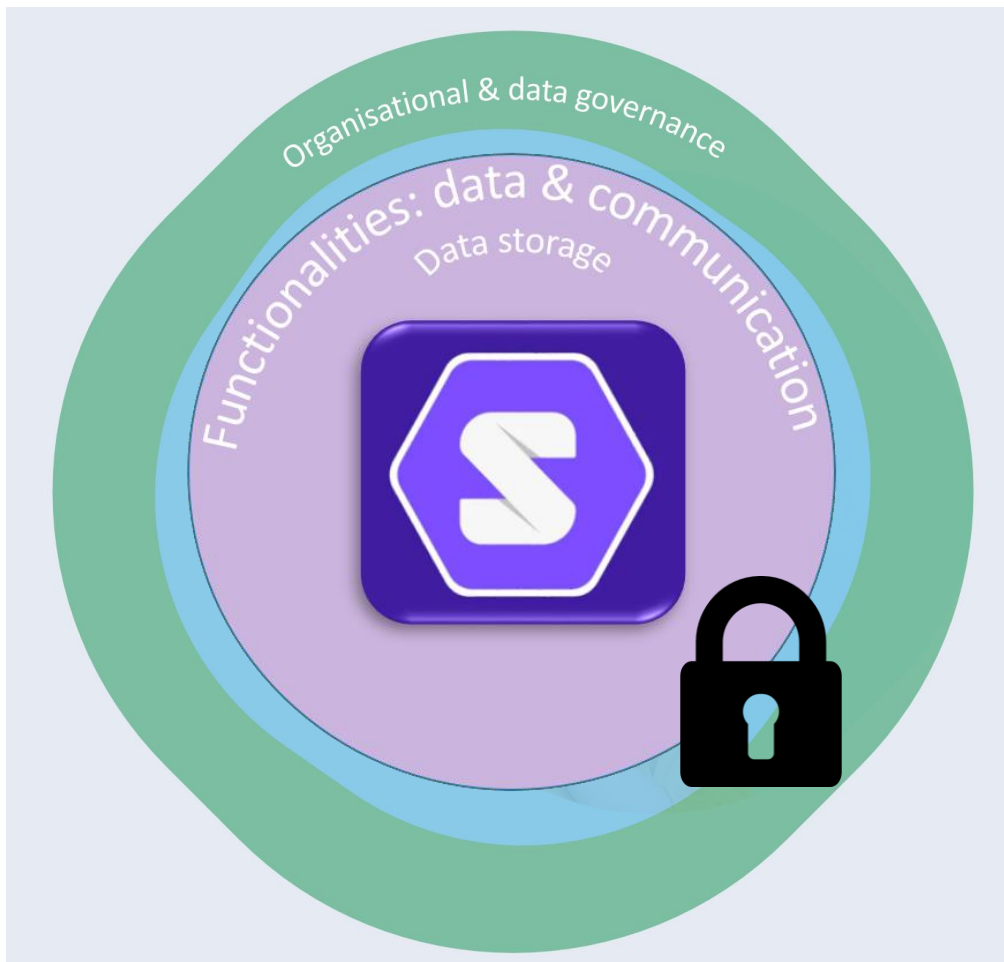


we are



TECHNOLOGY

 we are



data utility company
Server hosting



DIGITAAL
VLAANDEREN

SolidLab
Expert advice

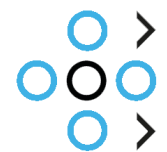


DEPARTEMENT
ECONOMIE
WETENSCHAP &
INNOVATIE

IT industry / SMEs
Consultancy

IT industry / SMEs
App development

TECHNOLOGY



we are



we are



- A citizen-centric ecosystem
- Separating data from applications
- **Shaping applications**

Innovation



R&D innovation



Personalised products & services

**INNOVATIONS
APPLICATIONS**

 **we are**

- **COOCK:** Collective R&D and Collective knowledge sharing/dissemination
- **PURPOSE:** Valorizing (basic) research results by accelerating the introduction of technology and/or knowledge to a broad group of companies.



flanders.healthTech
bridging technologies for healthcare innovation



Define relevant Use Cases



Define the Business Case



Request for Funding (or not)



Implement Use Cases

USE CASE: TELEMONITORING



- J&J en BeWell:



- CLL: Chronic lymphocytic leukaemia
 - Treatment
 - Watch & wait
- Goal: expand telemonitoring to watch & wait
 - Greater need for follow up
 - Uncertainty
 - Impact on quality of life

USE CASE: TELEMONITORING



janssen



PHARMACEUTICAL COMPANIES OF
Johnson & Johnson

BeWell.
innovations

Needs in this use case

- Give patients more control
- Get applications linked to data to improve quality of life & follow-up
 - Personalized advice
 - Contact health care professional when problems arise
- Attention to ethical & legal framework

PATIENT CONTROLS PERSONAL HEALTH SENSOR DATA

Welcome to the VITO
Solid Sandbox

Choose your login method

 Aanmelden

[Sign out](#)

Your account

Email

Password

Stay logged in

[Sign up](#) [Forgot password](#)

 Sensor Monitoring

Analyse dashboard

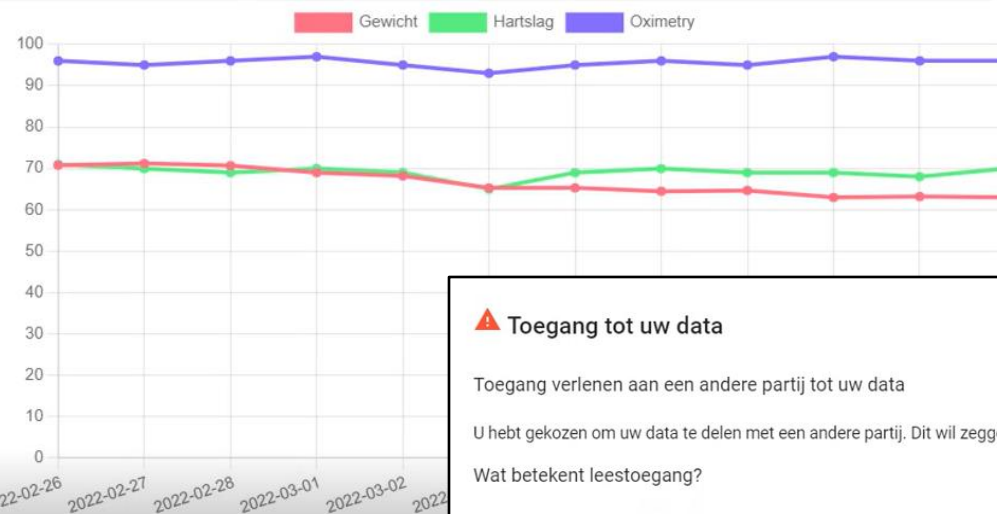
Hartslag

Zuurstof

Gewicht



Er is een gewichtsverlies van meer dan 10% in voorbije 6 maanden. Deel deze data met uw arts



Toegang tot uw data

Toegang verlenen aan een andere partij tot uw data

U hebt gekozen om uw data te delen met een andere partij. Dit wil zeggen dat deze partij leestoeegang krijgt tot uw data. U kan op elk moment deze leestoeegang intrekken.

Wat betekent leestoeegang?

Uw data blijft nog altijd in uw data pod, maar de andere partij mag de data van u op deze locatie bekijken.

GENERAL PRACTITIONER MONITORS & PROVIDES FEEDBACK



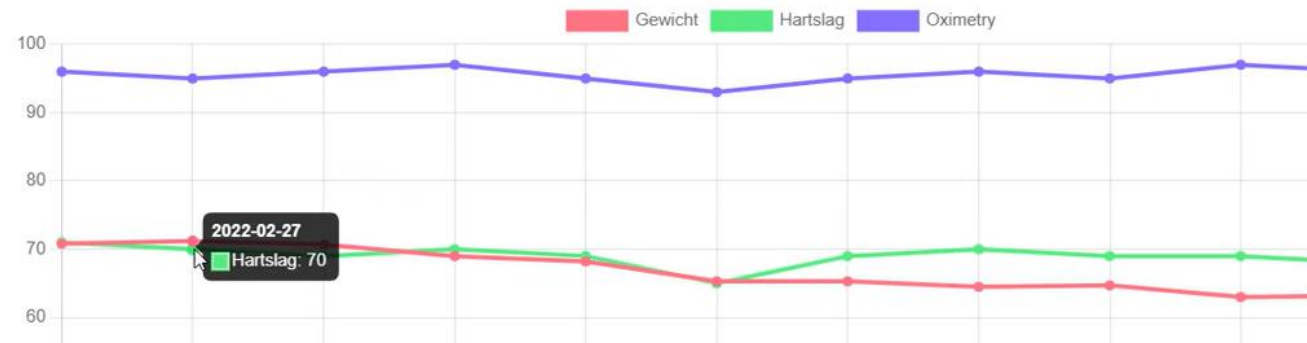
Dokter Monitoring

Geef uw webid om uw dashboard en patiënteninformatie te consulteren.

Solid Server name

1 gewichtsverlies van meer dan 10% in voorbije 6 maanden.

Data van de patient



2022-03-06	64.7	95	69
2022-03-07	63	97	69
2022-03-08	63.2	96	68
2022-03-09	63	96	70

Beantwoorden

Geef feedback

Beste Frederik, uw oximetry en hartslag liggen binnen de voor u acceptabele grenzen. Een gewichtsverlies van 10% over 6 maanden kan wijzen op een onderliggend probleem. Gelieve zo snel mogelijk een afspraak te maken om verder te onderzoeken.
Vriendelijke groeten,
Jens



CLEAN VISION SUMMIT



14
JUNE

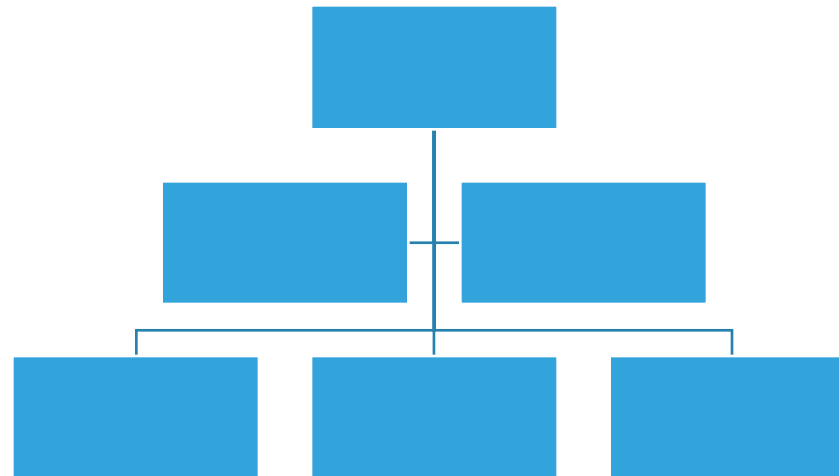
—
BIJLOKE
GENT

< CLEAN VISION SUMMIT

 save data

LOCAL - FLANDERS - INTERREGIONAL

 we are



EMPOWER CITIZENS ON HEALTH PROMOTION



BIBOPP



**Tools for self-
management on health
promotion and
prevention**

**Co-creation and
participation with all
stakeholders**

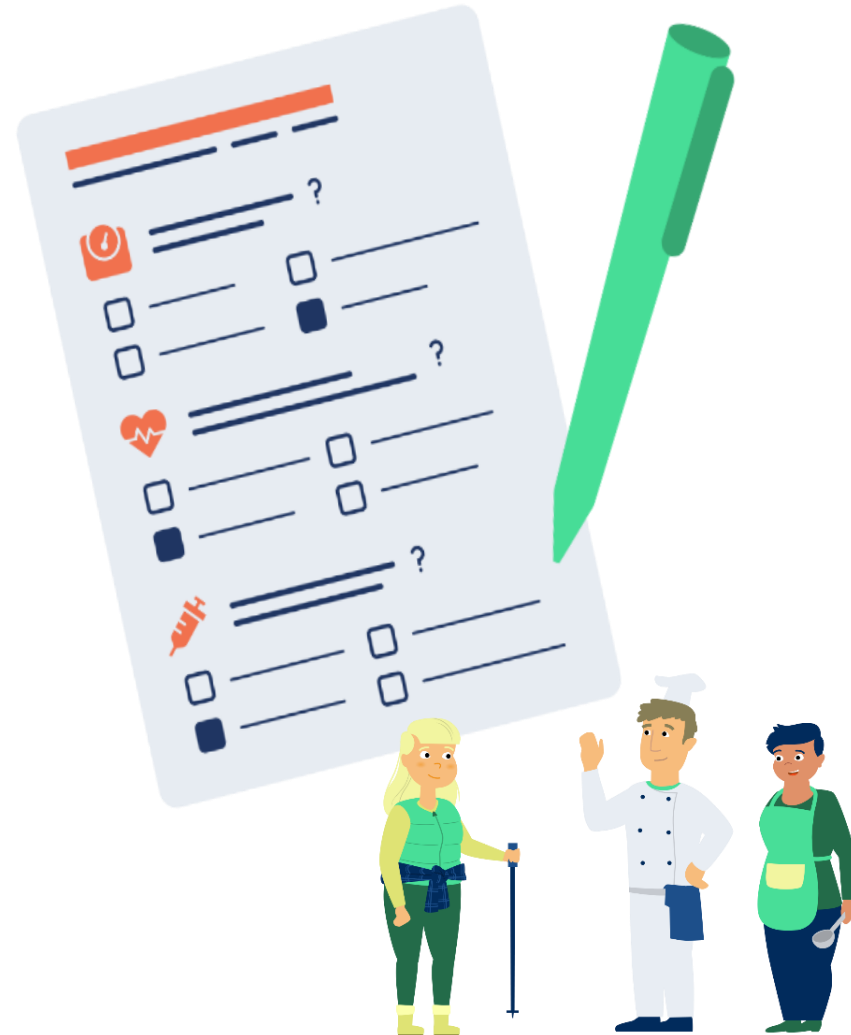


CREATION AND CAPTURE OF PERSONAL HEALTH DATA

REAL WORLD DATA

Online surveys

Through digital services



Medical background

Lifestyle

Behavior

Personal preferences

...

domus
medica

GEZONDHEIDSGIDS

REUSE OF DATA



Hallo! Ik ben Bob, de automatische gesprekspartner van BIBOPP. Ik help je graag bij vragen.

Hoe werk ik? Ik stel een aantal vragen. Ik laat verschillende antwoorden zien. Klik op het antwoord dat past bij je vraag.

Laten we starten! Waarover gaat je vraag precies?

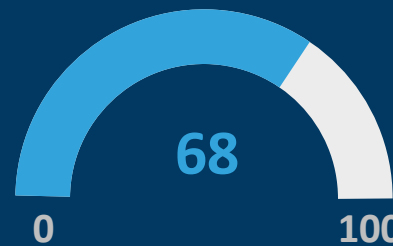
Klik op één van de knoppen om te antwoorden:



19 and Me: COVID-19 Risk Score Calculator

[Score](#) [Method](#) [FAQ](#)

The risk score for people with similar characteristics and behaviors as you is



BIBOPP Startpagina [Mijn actieplan](#) [Mijn coronarisco](#)

Hallo Nathalie

Jouw levensstijl:
Beweging Gezonde voeding

Jouw aandoeningen:
Risico op borst- en eierstokkanker

[Profiel wijzigen](#)
[Verberg profiel](#)

180 resultaten

Actiepunten: [Bewegen](#) [Gezonde voeding](#) [Ziekte-educatie](#)

Categorieën: Alle categorieën zijn geselecteerd.

Postcodes: 2400 - Mol

Aantal personen: Individueel In groep

Plaats: Online Buiten Andere

Recente activiteiten:
LEZING OF CONGRES **Blijvend gewichtsverlies** donderdag 27 januari 2022
SPORT EN BEWEGING **Webinar - Start to Stop** Van zaterdag 15 januari 2022
SPORT EN BEWEGING **Online yoga: gratis voor beginners en niet-beoefenaars** maandag 31 januari 2022
SPORT EN BEWEGING **Fotozoektocht Mol-De Bilt** Van woensdag 1 september 2022

CITIZEN

Based on **health-related needs** and **wishes**, through **human-centered design**



With **Health and digital literacy** organizations



True **informed consent**:
We Are



CARE PROVIDER



Integrated care

Technological: connected to national eHealth platform (EHR)

Referral: different actors primary care zones

Evidence-based population screening



POLICY



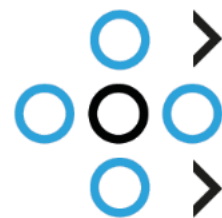
Population Health Management based on real-life data

Participation: co-creation and follow-up

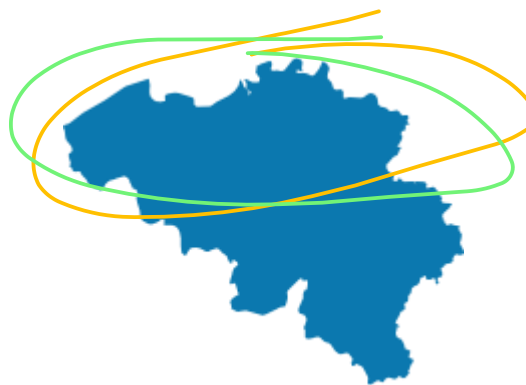
R&D



Blueprint on
implementation of **caring**
technologies



we are



Support to share data
for **own well-being**
and **public interest**,

Allow **ownership** of data

The logo for CAiSE'22 features the text "CAiSE'22" in a bold, red, sans-serif font. A small, 3D-rendered cube with red, white, and blue faces is positioned above the letter 'i' in "CAiSE".

CAiSE'22

**34th International Conference
on Advanced
Information Systems Engineering**

06/06/2022 - 10/06/2022, LEUVEN 2022

<https://we-are-health.eu>

<https://bibopp.be>

**THANK
YOU**

Jef Hooyberghs, VITO - UHasselt