

# INCLUSIVE RESEARCH FOR DIVERSE PERSPECTIVES, EQUITY OF DATA AND OWNERSHIP

Prof. dr. Elke Emmers – School of Educational Sciences, Hasselt University

Nicky Daniels (PhD) – Research Data Management, Hasselt University



[ELKE.EMMERS@UHASSELT.BE](mailto:ELKE.EMMERS@UHASSELT.BE)




**UHASSELT**

KNOWLEDGE IN ACTION

# BACKGROUND INFORMATION

- In the field of **educational sciences**, research aims to generate results that can be applied to policy and **practice** (Creswell, 2012)
- **Active involvement of citizens** throughout the research data life cycle can enhance the generalizability of research outcomes (Ramcharan et al., 2004)



Highlights the significance of **connecting research with society**, demonstrating a commitment to inclusivity by tackling pressing societal issues such as diversity, digitalization, inequality, ...

Start – research on digital resources of underserved students

## Example:

"An initiative aimed at improving access to digital resources for underserved students resulted in a significant increase in their digital skills, which improved their **access to further educational opportunities**,  
... as well as later employment,  
... housing in better neighborhoods, and so on."

# IMPORTANCE OF INCLUSIVITY

This approach highlights the significance of

- ✓ Connecting research with society
- ✓ Tackling societal issues such as



Diversity



Digitalization



Inequality

The voice of the kettle



# OBJECTIVE

- The objective of this presentation is to focus on '**engaged scholarship**,' which highlights the importance of active collaboration among students, teachers, researchers, and the general public.
- Theoretical framework: Critical pedagogy and action research.

(Cahnmann-Taylor & Siegesmund, 2017; Van der Vaart et al., 2018)

# METHODOLOGICAL ASPECTS

---

Protecting privacy of participants through 'privacy by design' or 'data equity' (Gonzalez et al., 2022).

We prioritize the promotion of inclusiveness by

- Actively seeking to involve a diverse range of perspectives
- Ensuring representation from different ethnic and socio-economic backgrounds

Air quality as part of a good classroom environment and air quality at home as a good study environment.

**For us, the results were in the students/parents WHO DID NOT PARTICIPATE.**

# METHODOLOGY

Case study in higher education, focusing on engagement and inclusivity using photovoice.



Lots of questionnaires, lots of interviews - but having their voices really heard?

- Photo + voice
- 20 students
- it's not about nice furniture 🪑
- it's not about the color of the PowerPoint
- it's about **feeling at home**
- it's about feeling like **I belong here**

Article in prep



**UHASSELT**

KNOWLEDGE IN ACTION

# RESEARCH RESULTS

Photovoice case study: Engaging and inclusive methodologies.  
(Wang & Burris, 1997)

Involving students as active participants enhances their perspectives and cultivates ownership and empowerment

## Key findings:

- ✓ Ethical considerations are crucial
- ✓ Empowerment through active participation
- ✓ Collective ownership of research outcomes
- ✓ Collaborative creation and knowledge sharing

Shared wages and the effect on my benefits?

Share concerns and my study results?

Political interests?



**DATA EQUITY**

# DATA EQUITY

A term we use to describe an ethos toward using data for health, well-being, and equity. Data equity recognizes the importance of considering issues of power, bias, and discrimination in data collection, analysis, and interpretation.



**UHASSELT**

KNOWLEDGE IN ACTION



- Still, we do research **about** people
- Often **on** people as well
- Often **with** people

But what if there is a power difference and you want to do research **together with them**?

But whose data is it?



## INCLUSIVE RESEARCH DESIGN

BEFORE – DURING – AFTER



**UHASSELT**

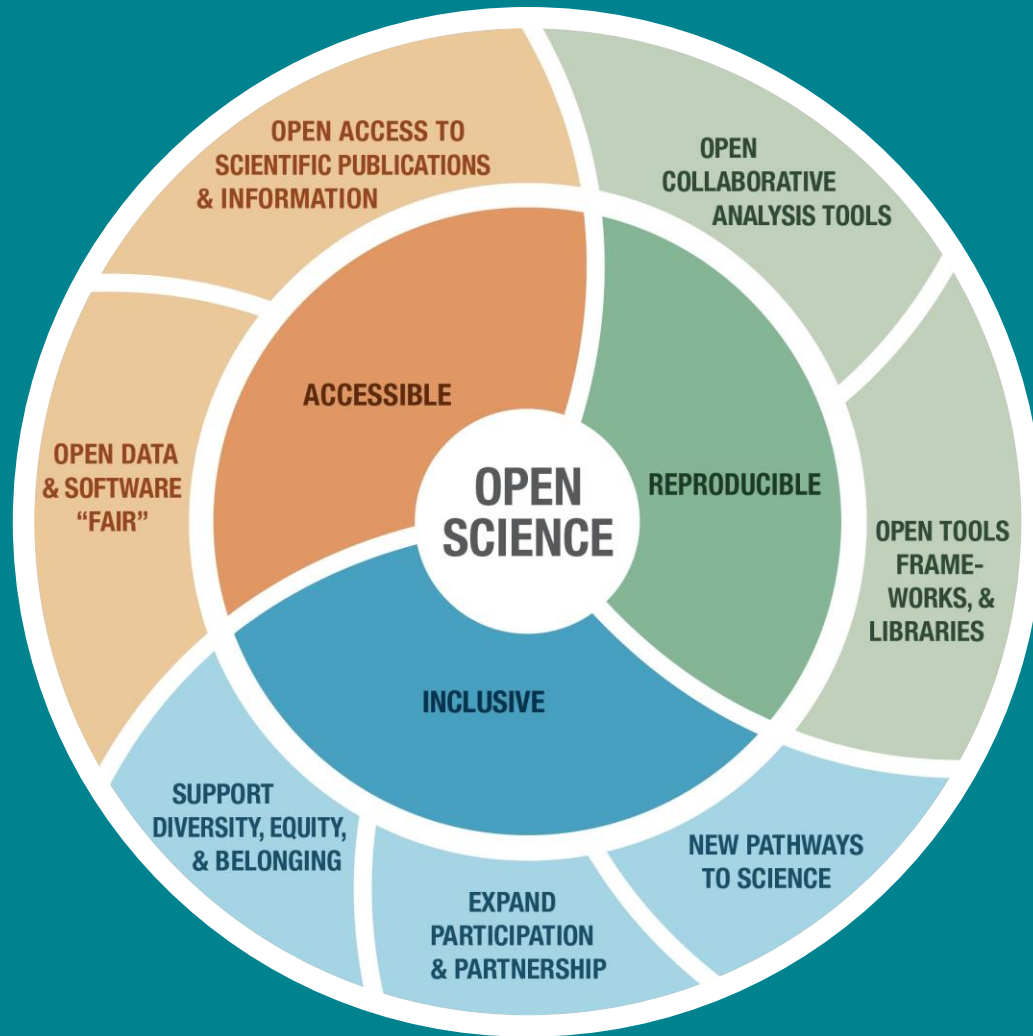
KNOWLEDGE IN ACTION

# HOW INCLUSIVE RESEARCH DESIGN



- Seeking community ownership of data
- Ensuring protection & power-sharing – e.g., privacy by design & by default
- Recognizing and correcting legacies of discrimination
- Using data and storytelling to tell a more complete picture >< factsheets
- Addressing systemic inequities and power imbalances – e.g., community steering committee, participant committee
- Informed consent in a clear and accessible language

# WHY INCLUSIVE RESEARCH DESIGN



## EQUITY

- Takes into diversity of the society

## INTEGRITY

- Transparency
- Trustworthiness of research output
- Better quality of data

## COLLABORATION

- Builds belonging and civic muscle
- Adds sustainability and long-term community partnership
- Interdisciplinary research

## SOCIETAL & ACADEMIC IMPACT

- Improves health and well-being
- Reuse of research output

# INCLUSIVE RESEARCH

is not **about** the community, nor **on** the community, but **with** the community.

This collaboration drives societal impact that extends **beyond academic results**, fostering **genuine, tangible improvements** in people's lives.

- Photos by Unsplash
- Abbasi, A., Sarker, S., & Chiang, R. H. (2016). Big data research in information systems: Toward an inclusive research agenda. *Journal of the association for information systems*, 17(2), 3.
- <https://www.communitycommons.org/collections/An-Introduction-to-Data-Equity>
- Wang, C., & Burris, M. A. (1997). Photovoice: Concept, methodology, and use for participatory needs assessment. *Health education & behavior*, 24(3), 369-387.
- Datnow, A., Greene, J. C., & Gannon-Slater, N. (2017). Data use for equity: Implications for teaching, leadership, and policy. *Journal of Educational Administration*, 55(4), 354-360.
- [Cahnmann-Taylor, M., & Siegesmund, R. \(2017\). Arts-based research in education. Routledge.](#)
- [Creswell, J. W. \(2012\). Educational research: Planning, conducting, and evaluating quantitative and qualitative research. Pearson Education, Inc.](#)
- [Gonzalez, N., Alberty, E., Brockman, S., Nguyen, T., Johnson, M., Bond, S., O'Connell, K., Corriveau, A., Shoji, M., & Streeter, M. \(2022\). Education-to-Workforce Indicator Framework: Using Data to Promote Equity and Economic Security for All. Mathematica. https://eric.ed.gov/?id=ED628916](#)
- [Ramcharan, P., Grant, G., & Flynn, M. \(2004\). Emancipatory and participatory research: How far have we come. The international handbook of applied research in intellectual disabilities, 83-111.](#)
- <https://utrechtuniversity.github.io/dataprivacyhandbook/privacy-by-design.html>
- <https://rdmkit.elixir-europe.org/data life cycle>
- <https://www.earthdata.nasa.gov/technology/open-science/oss-for-eso-workshops>
- [Van der Vaart, G., van Hoven, B., & Huigen, P. P. \(2018\). Creative and arts-based research methods in academic research. Lessons from a participatory research project in the Netherlands. Forum Qualitative Sozialforschung/Forum: Qualitative Social Research, 19\(2\), 30.](#)

# References