

Dorsal unpaired median neurons of *Locusta migratoria* express  
ivermectin- and fipronil-sensitive glutamate-gated chloride channels

Non Peer-reviewed author version

JANSSEN, Daniel; Derst, Christian; BUCKINX, Roeland; VAN DEN EYNDEN, Jimmy; RIGO, Jean-Michel & VAN KERKHOVE, Emmy (2007) Dorsal unpaired median neurons of *Locusta migratoria* express ivermectin- and fipronil-sensitive glutamate-gated chloride channels. In: JOURNAL OF NEUROPHYSIOLOGY, 97(4). p. 2642-2650.

DOI: 10.1152/jn.01234.2006

Handle: <http://hdl.handle.net/1942/8556>

Dorsal Unpaired Median Neurons of *Locusta migratoria* express  
ivermectin- and fipronil-sensitive glutamate-gated chloride  
channels

Running head: "GluCl in DUM neurons of *L. migratoria*"

Daniel Janssen<sup>1\*</sup>, Christian Derst<sup>3</sup>, Roeland Buckinx<sup>2</sup>, Jimmy Van den Eynden<sup>2</sup>, Jean-Michel Rigo<sup>2</sup>, and Emmy Van Kerkhove<sup>1</sup>

<sup>1</sup> Centre of Environmental Sciences, Department of Physiology, Hasselt University and transnationale Universiteit Limburg, Agoralaan, Diepenbeek, 3590, Belgium

<sup>2</sup> Biomedical Research Institute, Hasselt University and transnationale Universiteit Limburg, Agoralaan, Diepenbeek, 3590, Belgium

<sup>3</sup> Institute for Integrative Neuro-anatomy, Charité, Philippstr. 12, 10115 Berlin, Germany

\*Corresponding author; D.V.M. Janssen Daniel

Phone: ++32 (0) 11 26 85 51

Fax: ++32 (0) 11 26 85 99

E-mail: [daniel.janssen@uhasselt.be](mailto:daniel.janssen@uhasselt.be)

## Abstract

Together with type A GABA and strychnine-sensitive glycine receptors, glutamate-gated chloride channels (GluCl) are members of the Cys-loop family of ionotropic receptors, which mediate fast inhibitory neurotransmission. To date, GluCls are found in invertebrates only, and therefore represent potential specific targets for insecticides, such as ivermectin and fipronil.

In this study, we identified the functional expression of GluCls in dorsal unpaired median (DUM) neurons of the metathoracic ganglion of *Locusta migratoria* using electrophysiological and molecular biological techniques. In whole-cell patch-clamped DUM neurons, glutamate-induced changes in both their membrane potentials (current-clamp) and currents (voltage-clamp) were dependent upon the chloride equilibrium potential. Upon continuous application of glutamate, the glutamate-elicited current response became rapidly and completely desensitized. Application of glutamate in the presence of 10  $\mu\text{M}$  fipronil or 100  $\mu\text{M}$  picrotoxin reversibly decreased GluCl-mediated currents by 87% and 39%, respectively. Furthermore, 1  $\mu\text{M}$  ivermectin induced a persistent chloride current, suggesting the expression of ivermectin-sensitive GluCl  $\alpha$  subunits. A degenerate PCR/RACE strategy was used to clone the full-length *Locusta migratoria* LmGluCl $\alpha$  subunit. Finally, RT-PCR experiments demonstrated the presence of LmGluCl $\alpha$  transcripts in locust DUM neurons. Our results provide the first direct evidence of a functional ivermectin-sensitive GluCl channel on the cell surface of DUM neurons of *L. migratoria*.

Key Words: Cys-loop receptors, ligand-gated ion channels, locust, insecticides, patch-clamp.

## Introduction

Glutamate is the main excitatory amino acid neurotransmitter in the central nervous system of vertebrates, where it interacts both with ionotropic receptors, *i.e.*, ligand-gated ion channels, and metabotropic or G protein-coupled receptors (Hogner et al. 2002). In vertebrates, ionotropic glutamate receptors are permeable to cations and can be subdivided into three groups according to their respective main agonist: *N*-methyl-*D*-aspartate (NMDA), AMPA and kainate receptors.

In invertebrates, L-glutamate can also act as an excitatory transmitter at the neuromuscular junction (Wafford and Sattelle 1989; Ikeda et al. 2003). However, a biphasic response to L-glutamate is usually observed, consisting of a depolarization followed by a hyperpolarisation. A pure hyperpolarizing effect can be obtained by applying ibotenate, a conformationally restricted structural analog of glutamate (Wafford and Sattelle 1989). These responses are mediated by another class of glutamate ionotropic receptors. These are involved in inhibitory synaptic transmission, and consist of glutamate-gated chloride channels (GluCl). They were first identified in arthropods as extrajunctional glutamate receptors ('H' receptors) that cause hyperpolarisation of the locust leg muscle (Dudel et al. 1989; Cully et al. 1996). The inhibitory ionotropic glutamate receptor gates a chloride-selective ion channel and belongs to the Cys-loop ligand-gated channel superfamily, together with the nicotinic acetylcholine, type A GABA, type C GABA, glycine, type 3 5-HT receptors (Cull-Candy 1976; Cleland 1996) and the histamine gated chloride channel (Zheng et al. 2002).

Up to now, GluCl channels have only been found in invertebrate nerve and muscle cells (Cleland 1996). GluCl receptors thus form a potentially important target

for the development of insecticides having highly selective toxic activity against insects, which have become resistant to other insecticides (Raymond and Satelle 2002; Zhao et al. 2004b). Chemical compounds that affect GluCl receptors include members of the avermectine/milbemycin (A/M) class of anthelmintics such as ivermectin, as well as the phenylpyrazole insecticides, including fipronil. These products are in common use, and form effective prophylactic and curative treatments against endo- and/or ectoparasitic infestations (Horoszok 2001; Bloomquist 2003). Ivermectin, a macrocyclic lactone derived chemically from the parent macrocyclic lactone avermectin B<sub>1A</sub>, appears directly to activate GluCl or, at lower concentrations, to potentiate the effect of glutamate (Yates and Wolstenholme 2004). However, due to their close homology with GluCl, it is likely that GABA-gated channels in invertebrates are also sites of ivermectin toxicity (Kane et al. 2000). Fipronil has been designated as a new GABA-gated chloride channel blocker, and introduced into pest control, for instance, against the Colorado potato beetle and against some cotton pests (Moffat 1993; Smith and Lockwood 2003). The blocking action of fipronil on GluCl channels has been demonstrated in oocytes transfected with GluCl<sub>s</sub> (Horoszok et al. 2001), and a similar degree of block was observed on chloride currents induced by glutamate and ibotenate in dorsal unpaired median (DUM) neurons of the cockroach *Periplaneta americana* and the grasshopper *Melanoplus sanguinipes* (Smith et al. 1999; Raymond et al. 2000; Ikeda et al. 2003).

At the molecular and functional level, GluCl<sub>s</sub> remain poorly characterized. Up to now, cloning studies have led to the identification of a small family of six GluCl genes in the nematode. In *Haemonchus contortus*, three genes encoding four subunits have been identified. In *Drosophila melanogaster*, a cDNA clone (DmGluCl $\alpha$ ) was obtained by hybridization screening (Cully et al. 1996). Electrophysiological studies

of *D. melanogaster* DmGluCl $\alpha$ , expressed in oocytes, revealed direct activation by the acaricide nodulosporic acid and by ivermectin, as well as by the endogenous ligand glutamate (Kane et al. 2000).

The neurobiology of the locust has been extensively investigated, and the action of L-glutamate upon muscles of in this insect has been well studied (Grolleau and Lapied 2000; Wicher et al. 2001; Heidel and Pflüger 2006). However, in the nervous system of *L. migratoria*, relatively little is known about the effect of glutamate on efferent DUM neurons. In the locust, efferent DUM neurons extend symmetrical pairs of axons to flight and leg (tibia) muscle, where they exert myo- and/or neuromodulatory effects. In other arthropod species, such as *P. americana*, GluCl $\alpha$  seems to have a modulatory effect on the excitability of the DUM neurons and could play a substantial role in muscle and flight control (Dubas 1991; Washio 2002). It is thus tempting to postulate that GluCl $\alpha$  fulfill the same role in DUM neurons of *L. migratoria* and that they might well therefore also represent a useful target for insecticide pest control in this species too.

In the present study, we looked for the presence of a glutamate-gated chloride channel in an *ex vivo* preparation of DUM neurons of the metathoracic ganglion of *L. migratoria* using the whole-cell patch-clamp technique. Under current-clamp conditions, glutamate-induced changes in membrane potential were measured, while under voltage-clamp conditions, glutamate-evoked currents were pharmacologically and kinetically characterized. Finally, using molecular biology techniques, we looked for the expression of GluCl transcripts that could account for the observed glutamate responses.

## Material and Methods

### *Isolation of metathoracic DUM neurons of the locust*

Adult migratory locusts (*L. migratoria*) were used in all experiments. They were taken from a crowded laboratory colony maintained at ~32°C on a 14:10 hour light/dark cycle and on a diet of grass and oatmeal. Isolated DUM neuronal cell bodies were prepared as described previously (Brône et al. 2003). Briefly, the dorsal median region containing the neuromeres T3, A1-A3 of the metathoracic ganglion were mechanically removed and subjected to collagenase/dispase (2mg/ml) treatment. The cells were centrifuged, and subsequently washed three times with culture medium consisting of equal parts of Basal Medium Eagle with Hank's salts (BME) and Grace's Insect Medium (GIM). In the first wash, a 1% penicillin/streptomycin mixture was added to the BME/GIM culture medium. The cells were dissociated by repetitive up and down aspirations through a pipette tip, then plated on Nunc petri dishes and incubated at 28°C in a 5% CO<sub>2</sub> atmosphere. All products were GibcoBRL (obtained from Invitrogen, Belgium), except for the Boehringer collagenase/dispase mixture (from Roche Diagnostics, Belgium). Healthy efferent DUM neurons of diameter of approximately 40 to 60 µm were recognized by their morphological characteristics under phase contrast microscopy (Nikon Diaphot, Japan) – see, e.g., Brône et al. 2003.

### *Electrophysiology*

Changes in the membrane potential of and current in DUM neurons of *L. migratoria* were recorded at room temperature using the whole-cell configuration of the patch-

clamp technique both in current-clamp and voltage-clamp conditions. Locust DUM neurons were transferred onto the stage of an inverted phase contrast microscope (Nikon Diaphot, Japan) in a recording chamber that was continuously perfused with solutions further described in Table 1. Electrodes made from 1.5 mm (o.d.) borosilicate glass capillary tubes, having a resistance between 800 k $\Omega$  and 1.5 M $\Omega$ , were also appropriately filled with the solutions listed in Table 1. In order to reduce contaminating Na<sup>+</sup> and K<sup>+</sup> currents through the voltage-gated ion channels, some experiments were conducted using modified intracellular and extracellular solutions (Table 1). The osmolality of ~380 mOsm/kg of these solutions, corresponding to that of *L. migratoria* hemolymph (Brône et al. 2003), was attained by addition of glucose. Liquid junction (LJ) potentials were calibrated using the Junction Potential Calculator for Windows (JPCalcW, Peter H. Barry, Dept. of Physiology & Pharmacology, Australia and Axon Instruments, Inc., California, USA), and were taken into account at the start of each experiment. The LJ potential between the standard intracellular solution (SIS) and standard extracellular solution (SES) was -18 mV, between highCl<sup>-</sup>-IS and SES was -21.8 mV, between lowNa<sup>+</sup>-ES and lowK<sup>+</sup>highCl<sup>-</sup>-IS was -6.7 mV and between lowNa<sup>+</sup>-ES and lowK<sup>+</sup>lowCl<sup>-</sup>-IS was -19.2 mV. The experimental protocols and data acquisition were carried out using an EPC-10 patch clamp amplifier (HEKA Elektronik, Lambrecht, Germany) controlled by the program Pulse (HEKA Elektronik, Lambrecht, Germany) running on a personal computer (equipped with a Pentium III processor). Capacitive and leak currents were compensated, and residual capacitances and leak currents were eliminated, by means of a P/6 protocol (Moyer and Brown 2002). The series resistance was lower than or equal to 1.5 M $\Omega$  and was compensated up to 53 %. The recording of whole-cell



current was started 5 min after rupture of the cell membrane in order to allow adequate equilibration of the cell interior with the pipette solution.

#### *Data acquisition and analysis*

Data were filtered at 2.9 kHz and sampled at 20 kHz. They were stored on a computer hard disk, and analyzed with the program PulseFit 8.77 (HEKA instruments). Further analyses, including non-linear regression, were carried out using Origin 6.0 Professional (Microcal Software, Northampton, MA).

Current-voltage relationships were fitted with the Goldman-Hodgkin-Katz (GHK) equation:

$$I_x = \frac{z^2 F^2}{RT} P_x V_m \left\{ \frac{[X_i] - [X_o] e^{-zFV_m/RT}}{1 - e^{-zFV_m/RT}} \right\}$$

Desensitization kinetics of individual glutamate-evoked currents was assessed by fitting the desensitizing phase with the following equation:

$$I = I_0 \cdot e^{-\frac{t}{\tau}}$$

Except where stated otherwise, results are expressed as mean  $\pm$  S.E.M., n being the number of experiments. Statistical comparisons were made using the Student's *t* test or one-way analysis of variance (ANOVA) followed by Dunnett's post-tests. Differences were considered significant for  $P \leq 0.05$ .

#### *Chemicals*

Monosodium glutamate (Sigma-Aldrich Chemie GmbH, Steinheim, Germany) and avermectin B<sub>1A</sub> (Sigma-Aldrich Chemie GmbH, Steinheim, Germany) were

dissolved in triply distilled water. Stock solutions of fipronil (PESTANAL<sup>®</sup>, from Sigma-Aldrich GmbH, Seelze, Germany) and picrotoxin (PTX, from Sigma-Aldrich GmbH, Seelze, Germany) were made in ethanol (EtOH) and dimethylsulfoxide (DMSO), respectively. These stock solutions were diluted into the extracellular solutions immediately before the start of each experiment. The final concentrations of EtOH and DMSO in the solutions were  $\leq 0.1\%$ , at which they had no effect on glutamate-induced currents (data not shown). L-glutamate and ivermectin were applied topically through a valve-controlled tubing system positioned laterally above the cell at a distance of approximately 50 – 100  $\mu\text{m}$ . The antagonists fipronil and PTX were applied to the bath.

*Degenerate PCR and RACE.*

To obtain the full length sequence of the *L. migratoria* GluCl $\alpha$  channel, a Marathon RACE library was constructed using a mixture of several tissues (including muscle and neuronal tissues) as described by the manufacturer (Clontech, Hamburg, Germany). Degenerated oligonucleotides were designed and synthesized based upon the predicted amino acid sequences of the conserved regions of the glutamate-activated chloride alpha channel (GluCl $\alpha$ ) after alignment of the GluCl $\alpha$ s from *Drosophila melanogaster* and *Caenorhabditis elegans*:

DEG-F: 5'-GT(CG)TCATGGGT(TA)TCATT(CT)TGG-3'

DEG-R: 5'-TC(CG)AG(CA)AG(TG)GC(CT)CCGAA(CT)AC(AG)AA(CT)GT-3'.

The thermocycler was programmed for 35 cycles at 94°C for 30 seconds, 41.5°C for 45 seconds, and 68°C for 45 seconds using the *L. migratoria* RACE library as a template and the Advantage Taq 2 polymerase mixture (Clontech) as polymerase.

The resulting band of 193 bp was directly sequenced, and the following primers were designed for rapid amplification of cDNA ends (RACE):

GSP-F1: 5'-GGCTCGATCAGGGTGCCGTTC-3'

GSP-F2: 5'-CCGTTCCCGCACGAGTGTCC-3'

GSP-R1: 5'-TCGAGAAGTGCCCCGAATACGA-3'

GSP-R2: 5'-ATGTTAGGCAGACGCCGGTCCA-3'.

The first RACE PCR was performed for 35 cycles at 94°C for 30 seconds and 68°C for 4 minutes using Advantage Taq 2 polymerase mixture and GSP-F1 (3'-RACE) or GSP-R1 (5'-RACE) combined with adaptor primer 1 (AP1). A second nested PCR was performed with GSP-F2 or GSP-R2 and AP2 primer. The PCR fragments (1000-2000bp) obtained were cloned into the pGEM-T vector (Promega, Karlsruhe, Germany) and sequenced until start and stop codons were identified.

*RNA isolation from DUM neurons and RT-PCR.*

DUM neurons of *L. migratoria* were isolated as described above with slight modifications. After the collagenase/dispase treatment, the cells were plated on a NUNC petri dish and incubated for at least 15 minutes at 28°C. The cells were picked up using a borosilicate patch pipette, then washed with ice cold PBS (pH 7.4) and transferred into an RNase-free microtube.

Total RNA was prepared from the material obtained from about 40 DUM neurons with the PicoPure<sup>®</sup> RNA Isolation KIT (Arcturus Bioscience Inc., Westburg B.V., Leusden, Netherlands) with an additional DNase treatment (Rnase-free DNase set, Qiagen) following the instructions of the suppliers. In addition, RNA from a mixture of several neuronal tissues (abdominal and thoracic ganglia, brain) was

prepared. First strand cDNA was synthesized using the Promega RT system of Promega Benelux BV, Leiden, Netherlands).

The cDNA of isolated locust DUM neurons and locust neuronal tissues was used as a template for a PCR using Taq DNA polymerase (Applied Biosystems). A fruitfly cDNA was used as a positive control. PCR primers DEG-f and DEG-R were used for amplification during 40 cycles at 94°C for 30 seconds, 41.5°C for 45 seconds, and 72°C for 45 seconds. PCR products were then separated on a 2% high-resolution agarose gel. Several distinctive bands were observed. The band of interest (~190-200 bp) was extracted from the gel using the Qiaquick gel extraction kit (Qiagen), purified and, in the case of isolated DUM neurons, subjected to a second PCR amplification using the same primers and incubation conditions. The amplified PCR fragments were either directly sequenced or cloned into pGEM-T for sequencing.

## Results

### *Glutamate elicits changes in the membrane properties of locust DUM neurons*

When recorded with solutions close to physiological conditions (SIS-SES; see Methods and Table 1), whole-cell patch- and current-clamp locust DUM neurons had a resting membrane potential of  $-34.4 \pm 3.8$  mV ( $n = 6$ ). As shown in figure 1A, application of 1 mM glutamate hyperpolarized the membrane to  $-62.6 \pm 1.81$  mV ( $n = 6$ ). When  $\text{Cl}^-$  concentrations were identical in intracellular and extracellular solutions, DUM neurons had a resting membrane potential of  $-58.8 \pm 1.4$  mV ( $n = 5$ ), and in that case glutamate induced a depolarisation of the membrane to  $-7.9 \pm 3.4$  mV ( $n = 5$ ; figure 1B).

These results suggested that glutamate could activate a glutamate-gated chloride channel (GluCl) in locust DUM neurons. Such GluCl<sub>s</sub> in other species are often characterized by a complete desensitization under a continuous glutamate superfusion with a time constant on the order of hundreds of milliseconds to seconds. In order to examine the kinetics of the glutamate-evoked currents in DUM neurons, recordings were obtained under voltage-clamp conditions using identical chloride concentrations in the intracellular and extracellular solutions. Under those conditions, application of 1 mM glutamate at a holding potential of  $-70$  mV elicited an inward current that reached a peak amplitude of  $-4.2 \pm 0.7$  nA ( $n = 7$ ) within 150–250 ms (figure 2). As expected for GluCl<sub>s</sub>, the current desensitized completely in the continuous presence of glutamate following a mono-exponential time course ( $\tau_{\text{decay}} = 194 \text{ ms} \pm 39 \text{ ms}$ ,  $n = 7$ ).

#### *Glutamate-induced currents are carried by chloride ions*

To assess whether or not the main ionic species carrying the glutamate-induced currents was chloride, the current-voltage relationships were obtained using two different intracellular solutions: one containing nearly identical intracellular and extracellular  $\text{Cl}^-$  concentrations (low $\text{K}^+$ high $\text{Cl}^-$ -IS) and a second one containing a lower  $\text{Cl}^-$  concentration in the intracellular solution (low $\text{K}^+$ low $\text{Cl}^-$ -IS). These solutions were also modified (see Table 1) in order to reduce contaminating currents through the voltage-dependent channels (e.g.,  $\text{K}_v$ ,  $\text{Na}_v$ ,  $\text{Ca}_v$ ). Currents were evoked by repeatedly applying 1 mM glutamate for 3 seconds and at the same time applying a voltage step ranging from  $-60$  mV up to  $+60$  mV. In between applications,  $V_H$  was returned to  $-70$  mV and glutamate was washed out (Figure 3A).

Maximum peak currents were measured at each voltage step and normalized for the cell capacitance. The reversal potential ( $E_{\text{Glu}}$ ) was calculated after fitting the data with the GHK equation (see Methods; Figure 3B). Using nearly identical  $\text{Cl}^-$  concentrations in the extracellular and intracellular solutions, glutamate-induced currents reversed in polarity at a membrane potential of +2.6 mV ( $n = 4$ ), which was close to the calculated chloride equilibrium potential ( $E_{\text{Cl}^-} = -0.9$  mV). At lower intracellular  $\text{Cl}^-$  concentrations,  $E_{\text{Glu}}$  shifted to a more negative value (-13.6 mV;  $n = 3$ ), which was in good agreement with the expected shift in the calculated Nernst equilibrium potential for chloride ions ( $E_{\text{Cl}^-} = -20$  mV).

These results clearly demonstrate that the glutamate-induced currents in locust DUM neurons are mainly carried by chloride ions.

#### *Pharmacology of glutamate-induced currents*

Glutamate-induced currents in locust DUM neurons were then tested for their sensitivity to two known blockers of GluCl<sub>s</sub>: fipronil and picrotoxin (PTX). As shown in Figures 4A and 4B, both drugs reversibly inhibited glutamate-gated currents. Ten micromolar fipronil inhibited to  $13.1 \pm 2.5$  % of controls ( $n = 5$ ; Figure 4A<sub>2</sub>). After washout, glutamate currents recovered to  $74.4 \pm 4.4$  % ( $n = 5$ ) of the control. In the presence of PTX, glutamate-evoked currents were reduced to  $38.8 \pm 4.2\%$  ( $n = 4$ ; Figure 4B<sub>2</sub>), whereas recovery was to  $87.8\% \pm 8.2\%$  ( $n = 4$ ) after washout.

Finally, currents induced by ivermectin (IVM), a macrocyclic lactone which is known irreversibly to activate GluCl channels directly (Cleland, 1996), were compared to glutamate-induced currents. In this series of recordings, currents induced by 1 mM glutamate in locust DUM neurons had a mean peak amplitude of  $-2.7$  nA  $\pm$  0.7 nA ( $n = 5$ ; Figure 4C<sub>1</sub>). In contrast, 1  $\mu$ M IVM induced a current that did not

desensitize, and did not even fully reverse after the removal of IVM. IVM-induced currents amounted to  $-5.9 \pm 1.5$  nA ( $n = 6$ ; Figure 4C<sub>2</sub>).

These pharmacological data further support the presence of a glutamate-gated chloride channel in efferent DUM neurons of *L. migratoria*.

#### *Cloning of full length LmGluCl $\alpha$*

Since functional GluCl $\alpha$ s usually require the expression of at least GluCl $\alpha$  subunits (Cully et al. 1996, Semenov and Pak 1999), we developed a degenerate PCR and RACE strategy in an attempt to clone the full length sequence of *L. migratoria* GluCl $\alpha$  (LmGluCl $\alpha$ ). Within the isolated cDNA prepared as described in the Method section, a 1362 bp open reading frame was identified encoding for a 453 amino acid protein. Typical features of GluCl subunits as in other members of the Cys-loop ligand-gated ion channel superfamily were found: a large extracellular N-terminal domain containing the ligand-binding site, a conserved Cys-loop and four transmembrane regions (Figure 5). Moreover, the LmGluCl $\alpha$  subunit showed strong homology to orthologous sequences from *Drosophila melanogaster* (CAA05260, 82.2% identity, 87.6% similarity), *Tribolium castaneum* (XP\_973383, 84.8% identity, 91.4% similarity), *Anopheles gambiae* (XP\_321697, 83.8% identity, 88.6% similarity), *Apis mellifera* (ABG75738, Jones & Sattelle 2006, 78.3% identity, 87.1% similarity), *Musca domestica* (BAD16657, 81.3% identity, 86.7% similarity), and *Lucilia cuprina* (AAC31949, 83.7% identity, 89.1% similarity). The cDNA sequence of the LmGluCl $\alpha$  subunit was deposited in GenBank under Acc.No. DQ643254.

### *DUM neurons of L. migratoria express LmGluCl $\alpha$ messengers*

The expression of LmGluCl $\alpha$  in locust DUM neurons was assessed as follows. mRNAs of isolated DUM neurons were reverse transcribed and used as template for a two-step PCR procedure. After the first PCR, a faint band was visible (Figure 6A). This PCR band was excised, purified and re-amplified (Figure 6B). Direct DNA sequencing confirmed the LmGluCl $\alpha$  sequence.

## **Discussion**

In the work reported in this paper, we have clearly demonstrated that efferent DUM neurons of *L. migratoria* express functional glutamate-gated chloride channels (GluCl $\alpha$ s), using molecular biology and electrophysiological methods. In the presence of physiological solutions mimicking the hemolymph, glutamate hyperpolarised the membrane of DUM neurons as would be expected were GluCl $\alpha$ s to be present and active. Voltage-clamp experiments indicated that glutamate-induced currents in locust DUM neurons: 1) desensitize completely under continuous glutamate application, 2) are mainly carried by chloride ions, and 3) are blocked by fipronil and PTX, consistent with the properties of GluCl $\alpha$ s in other invertebrate species. Expression of GluCl $\alpha$  subunit-containing GluCl $\alpha$ s was suggested by the sensitivity to IVM, which induced non-desensitizing persistent currents. Expression was confirmed by the RT-PCR detection of GluCl $\alpha$  transcripts in locust DUM neurons. Finally, we also report the full DNA sequence of the GluCl $\alpha$  subunit of *L. migratoria*.

In invertebrates, glutamate can interact with two classes of ionotropic receptors: excitatory channels, mainly permeable to cations as in vertebrates, and inhibitory anionic channels that are only found in invertebrates. When using intra- and



extracellular solutions with an ionic composition close to that of the hemolymph, we observed a hyperpolarizing response upon glutamate application, suggesting that locust DUM neurons only express inhibitory glutamate-activated channels (Wafford and Sattelle 1989; Ikeda et al. 2003). The chloride dependence of glutamate-induced responses was further confirmed by the shift to depolarization when  $E_{Cl^-}$  was changed from  $-79.6$  to  $-4.1$  mV and by the concordance of reversal potentials of glutamate-induced currents with chloride equilibrium potentials. Thus, it appears that *L. migratoria* DUM neurons express inhibitory ionotropic glutamate receptors only, and not their excitatory counterparts. This was also observed for DUM neurons of other insect species such as the cockroach *Periplaneta americana* (Washio et al. 2002), and for the stomatogastric ganglion of the lobster *Panulus interruptus* (Cleland and Selverston 1998). This is in contrast to the expression of both inhibitory and excitatory glutamate receptors by muscle cells in the locust or the crayfish (Kerry et al. 1987, 1988; Dudel and Franke 1987), or by motor neurons such as the fast coxal depressor motor neuron of the cockroach thoracic ganglion (Wafford and Sattelle 1989).

In our hands, both glutamate-induced voltage and current changes were monophasic. Furthermore, under voltage-clamp conditions, glutamate-induced currents completely desensitized in about 1 second in the continuous presence of glutamate. These properties are similar with those reported for *Caenorhabditis elegans* GluCl<sub>s</sub> expressed in *Xenopus* oocytes (Forrester et al. 2003). In cockroach DUM neurons, on the other hand, biphasic glutamate responses were observed, consisting of an initial transient and a subsequent prolonged phase (Raymond et al. 2000; Heckman and Dudel 1995; Zhao et al. 2004a). The desensitizing and non-desensitizing components of the glutamate-induced responses seem to be due to the

presence of pharmacologically distinct GluCl<sub>s</sub>: the former sensitive and the latter insensitive to PTX or BIDN. The desensitizing glutamate-evoked current we report in locust DUM neurons is also PTX-sensitive. It therefore probably corresponds to the transient current described in cockroach CNS neurons.

In locust DUM neurons, fipronil seems to be a more powerful antagonist of GluCl-mediated responses than does PTX. At 10  $\mu$ M, it blocked 86 % of glutamate-gated currents. This is in good agreement with the 75 % block by 10  $\mu$ M fipronil of the transient component of glutamate responses in cockroach DUM neurons reported by Raymond et al. (2000). To the best of our knowledge, our work is the first report of an effect of fipronil on isolated DUM neurons of *L. migratoria*. The blocking effect of fipronil on GluCl<sub>s</sub> had been proposed to explain part of the toxicity of this insecticide, which is widely used in pest control to eradicate dieldrin-resistant insects (Horoszok et al. 2001; Tingle et al. 2003; Zhao et al. 2004b; Smith and Lockwood 2003).

Ivermectin (IVM) at 1  $\mu$ M generated an irreversible inward current under identical chloride concentrations in DUM neurons of *L. migratoria*. At concentrations in the micromolar range, avermectin-derivatives are known activators of ligand-gated chloride channels, *i.e.* strychnine-sensitive glycine receptors (Shan et al. 2001), GABA receptors (Robertson 1989; Adelsberger et al. 2000), and GluCl<sub>s</sub> (Cleland 1996). Since glycine receptors are not found in invertebrates, the IVM-induced current observed in DUM neurons could be the consequence of the activation of either GABA receptors or GluCl<sub>s</sub> – or even both, as already demonstrated in the fruit fly (Ludmerer et al. 2002). Accordingly, the amplitude of the current induced by 1  $\mu$ M IVM was significantly higher than that induced by 1 mM glutamate, a potentially saturating concentration for GluCl<sub>s</sub>. This could suggest that IVM activates both GABA receptors and GluCl<sub>s</sub> in DUM neurons of the locust. On the other hand,

ivermectin-sensitive chloride currents in *Xenopus* oocytes injected with *C. elegans* mRNA were GABA-insensitive, but sensitive to glutamate (Yates et al. 2003). Further characterization of IVM-induced currents is needed to solve this issue, but that is beyond the scope of this work. As far as GluCl $\alpha$ s are concerned, it is usually accepted that the ability to irreversibly bind IVM is typically diagnostic for  $\alpha$ -like subunits of GluCl $\alpha$ s (Cully et al. 1994; Li et al. 2002). This has been demonstrated in several invertebrate species: locust (*Schistocerca americana*; Rohrer et al. 1994), barber pole worm (*Haemonthus contortus*; Forrester et al. 2001; Portillo et al. 2003), heartworm (*Dirofilaria immitis*, Yates et al. 2004), elegant worm (*Caenorhabditis elegans*; Horoszok et al. 2001; Dent et al. 1997, 2000), and strongylid worm (*Cooperia oncophora*; Njue et al. 2004). As opposed to GluCl $\alpha$  subunits, GluCl $\beta$  subunits have never been shown to respond to IVM (Cully et al. 1994; Li et al. 2002). Note, however, in some species, splice variants of GluCl $\alpha$  subunits have been shown to be IVM resistant, e.g., DiGluCl $\alpha$ 3A from *Dirofilaria immitis* (Yates et al. 2004) or CoGluCl $\alpha$ 3 from *Cooperia oncophora* (Njue et al. 2004).

The functional expression of  $\alpha$  subunit-containing GluCl $\alpha$ s by locust DUM neurons suggested by their IVM sensitivity was demonstrated at the molecular level. A full length LmGluCl $\alpha$  channel was cloned, using a PCR/RACE strategy, and its messenger RNA in isolated DUM neurons was detected by RT-PCR. This does not rule out the expression of other LmGluCl subunits and, hence, does not allow any conclusion about the homo- or heteromeric nature of locust GluCl $\alpha$ s. Transfection of the cloned LmGluCl $\alpha$  in heterologous expression systems might help to solve this question.

The functional implication of glutamate-gated chloride channels in DUM neurons of *L. migratoria* certainly deserves further attention. Since metathoracic

efferent DUM neurons innervate flight and leg muscles, their modulation by inhibitory GluCl s is likely to influence flight control (Groleau and Lapied, 2000). Furthermore, and more generally, since GluCl s have been described up to now in invertebrates only, a better insight into their functioning would undoubtedly contribute to the development of novel insecticides both more selective and more potent (Raymond and Satelle 2002; Zhao et al. 2004b).

## Acknowledgments

We would like to thank Jo Janssen and Rosette Beenaerts for their excellent technical support, Dr. Robert Dale for careful reading of the manuscript, and Dr. Inge Mertens, Laboratory of Developmental Physiology, Genomics and Proteomics of the Katholieke Universiteit Leuven for supplying the *D. melanogaster*.

## References

1. **Adelsberger H, Lepier A, and Dudel J.** Activation of rat recombinant alpha(1)beta(2)gamma(2S) GABA(A) receptor by the insecticide ivermectin. *Eur J Pharmacol* 394: 163-70, 2000.
2. **Bloomquist JR.** Chloride Channels as Tools for Developing Selective Insecticides. *Archives of Insect Biochemistry and Physiology* 54: 145-156, 2003.
3. **Brône B, Tytgat J, Wang DC, and Van Kerkhove E.** Characterization of Na<sup>+</sup> currents in isolated dorsal unpaired median neurons of *Locusta migratoria* and effect of the alpha-like scorpion toxin BmK M1. *Journal of Insect Physiology* 49(2): 171-182, 2003.
4. **Cleland TA.** Inhibitory Glutamate Receptor Channel. *Molecular Neurobiology* 13(2): 97-136, 1996.
5. **Cleland TA and Selverston AI.** Inhibitory glutamate receptor channels in cultured lobster stomatogastric neurons. *J Neurophysiol* 79: 3189-96, 1998.
6. **Cull-Candy, SG.** Two types of extrajunctional L-glutamate receptors in locust muscle fibres. *J Physiol* 255(2): 449-464, 1976.
7. **Cully DF, Paress PS, Liu, KK, Schaeffer JM, and Arena JP.** Identification of a *Drosophila melanogaster* glutamate-gated chloride channel sensitive to the antiparasitic agent avermectin. *J Biol Chem* 271(33): 20187-20191, 1996.
8. **Cully DF, Vassilatis DK, Liu KK, Paress PS, Van der Ploeg LH, Schaeffer JM, and Arena JP.** Cloning of an avermectin-sensitive glutamate-gated chloride channel from *Caenorhabditis elegans*. *Nature* 371(6499):707-711, 1994.

9. **Dent JA, Wayne DM, and Avery L.** *avr-15* encodes a chloride channel subunit that mediates inhibitory glutamergic neurotransmission and ivermectin sensitivity in *Caenorhabditis elegans*. *The EMBO journal* 16(19): 5867-5879, 1997.
10. **Dent JA, Smith MM, Vassilatis DK, and Avery L.** The genetics of ivermectin resistance in *Caenorhabditis elegans*. *Proc Natl Acad Sci U S A* 97(6): 2674-2679, 2000.
11. **Dubas F.** Actions of the putative amino acid neurotransmitter on the neuropile arborization of locust flight motoneurons. *J. Exp. Biol* 155: 337-356, 1991.
12. **Dudel J and Franke C.** Single glutamate-gated synaptic channels at the crayfish neuromuscular junction. II. Dependence of channel open time on glutamate concentration. *Pflugers Arch* 408: 307-14, 1987.
13. **Dudel J, Franke C, Hatt H, and Usherwood PN.** Chloride channels gated by extrajunctional glutamate receptors (H-receptors) on locust leg muscle. *Brain Res* 481(2) :215-220, 1989.
14. **Forrester SG, Prichard RK, Dent JA, and Beech R.** *Haemonchus contortus*: HcGluCla expressed in *Xenopus* oocytes forms a glutamate-gated channel that is activated by ibotenate and the antiparasitic drug ivermectin. *Molecular and Biochemical Parasitology* 192: 115-121, 2003.
15. **Grolleau F and Lapied B.** Dorsal unpaired median neurones in the insect central nervous system: towards a better understanding of the ionic mechanisms underlying spontaneous electrical activity. *J Exp Biol* 203 Pt 11:1633-1648, 2000.

16. **Heckmann M and Dudel J.** Recordings of glutamate-gated ion channels in outside-out patches from *Drosophila* larval muscle. *Neurosci Lett* 196(1-2): 53-56, 1995.
17. **Heidel E and Pfluger HJ.** Ion currents and spiking properties of identified subtypes of locust octopaminergic dorsal unpaired median neurons. *Eur J Neurosci* 23: 1189-1206, 2006.
18. **Hogner A, Kastrop JS, Jin R, Liljefors T, Mayer ML, Egebjerg J, Larsen IK, and Gouaux E.** Structural basis for AMPA receptor activation and ligand selectivity: crystal structures of five agonist complexes with the GluR2 ligand-binding core. *J Mol Biol* 322(1): 93-109, 2002.
19. **Horoszok L, Raymond V, Sattelle DB, and Wostenholme AJ.** GLC-3: a novel fipronil and BIDN-sensitive, but picrotoxinin-insensitive, L-glutamate-gate chloride channel subunit from *Caenorhabditis elegans*. *British Journal of Pharmacology* 132: 1247-1254, 2001.
20. **Ikeda T, Zhao X, Kono Y, Yeh JZ, and Narahashi T.** Fipronil modulation of glutamate-induced chloride currents in cockroach thoracic ganglion neurons. *Neurotoxicology* 24(6): 807-815, 2003.
21. **Jones AK and Sattelle DB.** The cys-loop ligand-gated ion channel superfamily of the honeybee, *Apis mellifera*. *Invert Neurosci* 6: 123-32, 2006.
22. **Kane NS, Hirschberg B, Qian S, Hunt D, Thomas B, Brochu R, Ludmerer SW, Zheng Y, Smith M, Arena JP, Cohen CJ, Schmatz D, Warmke J, and Cully D.** Drug-resistant *Drosophila* indicate glutamate-gated chloride channels are targets for the antiparasitics nodulisporic acid and ivermectin. *Proceedings of the National Academy of Sciences* 97(25): 13949-13954, 2000.



23. **Kerry CJ, Ramsey MS, Sansom MSP, and Usherwood PNR.** Glutamate receptor channel kinetics. *J. Biophys* 53: 39-52, 1988
24. **Kerry CJ, Ramsey MS, Sansom MSP, Usherwood PNR, and Washio H.** Single-channel studies of the action of (+)-tubocurarine on locust muscle glutamate receptors *J exp Biol* 127: 121-134, 1987
25. **Li P, Slimko EM, and Lester HA.** Selective elimination of glutamate activation and introduction of fluorescent proteins into a *Caenorhabditis elegans* chloride channel. *FEBS Lett* 528(1-3): 77-82, 2002.
26. **Ludmerer SW, Warren VA, Williams BS, Zheng Y, Hunt DC, Ayer MB, Wallace MA, Chaudhary AG, Egan MA, Meinke PT, Dean DC, Garcia ML, Cully DF, and Smith MM.** Ivermectin and nodulisporic acid receptors in *Drosophila melanogaster* contain both gamma-aminobutyric acid-gated Rdl and glutamate-gated GluCl alpha chloride channel subunits. *Biochemistry* 41: 6548-60, 2002.
27. **Moffat AS.** New chemicals seek to outwit insect pests. *Science* 261(5121): 550-551, 1993.
28. **Moyer JR and Brown TH.** Patch Clamp techniques applied to brain slices. In: *Patch-Clamp analysis: Advanced Techniques*, edited by Walz W, Boulton AA, and Baker GB. Totowa, NJ: Humana, 2002, chapt. 5, p. 173
29. **Njue AI, Hayashi J, Kinne L, Feng XP, and Prichard RK.** Mutations in the extracellular domains of glutamate-gated chloride channel alpha3 and beta subunits from ivermectin-resistant *Cooperia oncophora* affect agonist sensitivity. *J Neurochem* 89(5): 1137-1147, 2004.
30. **Portillo V, Jagannathan S, and Wolstenholme AJ.** Distribution of Glutamate-gated Chloride Channel Subunits in the Parasitic Nematode

- Haemonchus contortus*. *The Journal of Comparative Neurobiology* 462: 213-222, 2003.
31. **Raymond V, Sattelle DB, and Lapied B.** Co-existence in DUM neurons of two GluCl channels that differ in their picrotoxin sensitivity. *Neuroreport* 11(12): 2695-2701, 2000.
32. **Raymond V and Sattelle DB.** Novel animal-health drug targets from ligand-gated chloride channels. *Nat Rev Drug Discov* 1: 427-36, 2002.
33. **Robertson B.** Actions of anaesthetics and avermectin on GABAA chloride channels in mammalian dorsal root ganglion neurones. *Br J Pharmacol* 98: 167-76, 1989.
34. **Rohrer SP, Birzin ET, Costa SD, Arena JP, Hayes EC, and Schaeffer JM.** Identification of neuron-specific ivermectin binding sites in *Drosophila melanogaster* and *Schistocerca americana*. *Insect Biochem Mol Biol* 25(1): 11-17, 1995.
35. **Semenov EP and Pak WL.** Diversification of *Drosophila* chloride channel gene by multiple posttranscriptional mRNA modifications. *J Neurochem* 72: 66-72, 1999.
36. **Shan Q, Haddrill JL, and Lynch JW.** Ivermectin, an unconventional agonist of the glycine receptor chloride channel. *J Biol Chem* 276: 12556-64, 2001.
37. **Smith DI and Lockwood JA.** Horizontal and trophic transfer of diflubenzuron and fipronil among grasshoppers (*Melanoplus sanguinipes*) and between grasshoppers and darkling beetles (*Tenebrionidae*). *Arch Environ Contam Toxicol* 44(3): 377-82, 2003.
38. **Smith MM, Warren VA, Thomas BS, Brochu R, Ertel EA, Rohrer S, Schaeffer J, Schmatz D, Petuch BR, Tang YS, Meinke PT, Kaczorowski**

- GJ, and Cohen CJ.** Nodulisporic acid opens insect glutamate-gated chloride channels: identification of a new high affinity modulator. *Biochemistry* 39(18): 5543-5554, 2000
39. **Smith MM, Thomas B, Warren VA, Brochu R, Dick I, and Hirschberg B.** Fipronil blocks invertebrate ligand-gated chloride channels. *Soc Neurosci Abstr* 25: 1483, 1999
40. **Tingle CC, Rother JA, Dewhurst CF, Lauer S, and King WJ.** Fipronil: environmental fate, ecotoxicology, and human health concerns. *Rev Environ Contam Toxicol* 176:1-66, 2003.
41. **Wafford KA and Satelle DB.** L-Glutamate receptors on the cell body membrane of an identified insect motor neurone. *J Exp Biol* 144:449-462, 1989.
42. **Washio H.** Glutamate receptors on the somata of dorsal unpaired median neurons in cockroach, *Periplaneta americana*, thoracic ganglia. *Zoolog Sci* 19(2): 153-162, 2002.
43. **Wicher D, Walther, C, and Wicher C.** Non-synaptic ion channels in insects-basic properties of currents and their modulation in neurons and skeletal muscles. *Prog Neurobiol* 64: 431-525, 2001.
44. **Yates DM and Wolstenholme AJ.** An ivermectin-sensitive glutamate-gated chloride channel subunit from *Dirofilaria immitis*. *Int J Parasitol* 34(9): 1075-1081, 2004.
45. **Yates DM, Portillo V, and Wolstenholme AJ.** The avermectin receptors of *Haemonchus contortus* and *Caenorhabditis elegans*. *Int J Parasitol* 33(11): 1183-1193, 2003.

46. **Zhao X, Salgado VL, Yeh JZ, and Narahashi T.** Kinetic and pharmacological characterization of desensitizing and non-desensitizing glutamate-gated chloride channels in cockroach neurons. *Neurotoxicology* 25(6): 967-980, 2004a.
47. **Zhao X, Yeh JZ, Salgado VL, and Narahashi T.** Fipronil is a potent open channel blocker of glutamate-activated chloride channels in cockroach neurons. *J Pharmacol Exp Ther* 310(1): 192-201, 2004b.
48. **Zheng Y, Hirschberg B, Yuan J, Wang AP, Hunt DC, Ludmerer SW, Schmatz DM, and Cully DF.** Identification of two novel *Drosophila melanogaster* histamine-gated chloride channel subunits expressed in the eye. *J Biol Chem* 277(3): 2000-2005, 2002.

Figure 1. Glutamate-induced membrane potential changes in locust metathoracic ganglion DUM neurons, recorded with the whole-cell patch-clamp technique in current-clamp mode. (A) In the presence of standard intracellular and extracellular solutions (SIS – SES; see inset), application of 1 mM glutamate for 1 second hyperpolarized the DUM neuron membrane potential from  $-35$  to  $-61$  mV. (B) When using almost identical chloride concentrations in the intracellular and extracellular solutions (highCl<sup>-</sup>-IS – SES; see inset), glutamate generated a depolarisation from  $-55$  to  $-19$  mV.

Figure 2. Glutamate-evoked currents in locust metathoracic ganglion DUM neurons, recorded with the whole-cell patch-clamp technique in voltage-clamp conditions. This figure shows a typical experiment. In the presence of almost identical chloride concentrations in the intracellular and extracellular solutions (HighCl<sup>-</sup>IS – SES; see inset) and at a holding potential ( $V_H$ ) of  $-70$  mV, the application of 1 mM glutamate evoked an inward current that reached a peak amplitude of 5.6 nA. Current production desensitized completely during glutamate administration, with a mono-exponential time-course ( $\tau = 246$  ms).

Fig 3. Current-voltage relationship of glutamate-induced currents in locust DUM neurons recorded with the whole-cell patch-clamp technique.

(A) Currents ( $A_2$ ) were evoked by 1 mM glutamate applications at holding potentials ranging from  $-60$  to  $+60$  mV ( $A_1$ ), in the presence of almost identical Cl<sup>-</sup> concentrations and intracellular (lowK<sup>+</sup>HighCl<sup>-</sup>-IS) and extracellular solutions (lowNa<sup>+</sup>-ES) modified to reduce contaminating voltage-dependent currents. Between voltage steps,  $V_H$  was returned to  $-70$  mV and glutamate was washed out. B)  $I$ - $V$

relationship, obtained from glutamate induced currents described in (A) ( $[Cl^-]_i$ ; closed circles). Maximum peak currents were normalized for the cell capacitance and are plotted against the holding potentials. The relation was best-fitted with the GHK equation, which yielded a reversal potential of +2.65 mV. This was close to the calculated equilibrium potential (-0.9mV). When the intracellular chloride concentration was lowered to 83 mM ( $[Cl^-]_i$ ; open circles), the reversal potential shifted to -13.6 mV in agreement with the theoretically expected shift (-20 mV).

Figure 4. Pharmacological properties of the glutamate-gated chloride channel in DUM neurons of *L. migratoria*. 1 mM glutamate was applied for 3 seconds at a  $V_H$  of -70 mV in High $Cl^-$ -IS and SES conditions (see Methods), alone or in combination with 10  $\mu$ M fipronil ( $A_1$ ) or 100  $\mu$ M picrotoxin (PTX,  $B_1$ ). Recovery from inhibition (washout) was also checked. The histograms in  $A_2$  and  $B_2$  summarize fipronil- and PTX-induced inhibition of glutamate-activated currents (mean  $\pm$  SEM;  $n = 5$  for fipronil, 4 for PTX; \*\*  $P < 0.001$  and \*\*\*  $P < 0.0001$ : one-way ANOVA followed by Dunnett's post-tests). (C) A 1 mM glutamate application was followed by perfusion for 3 seconds with 1 $\mu$ M ivermectin (IVM), which elicited an inward current that persisted on washout of IVM.

Fig.5: cDNA and protein sequence of LmGluCl $\alpha$ . Start and stop codons are shown in bold/italics. Transmembrane regions (grey) and conserved cysteine residues of the Cys-loop (in box) are indicated. In addition, the position of the primers used for initial degenerate PCR are shown (underlined).

Fig 6. Expression of the GluCl $\alpha$  channel in DUM neurons of *L. migratoria*. (A) Agarose electrophoresis of the first PCR using locust DUM neuron cDNA as a template (lane a2; marker = 100 bp ladder shown in lane a1). (B) Re-amplification of the corresponding 193 bp PCR product for DNA sequencing (lane b3; marker = 50 bp ladder shown in lane b1). The positive control used was DmGluCl $\alpha$  (lane b2).

Table 1. Composition of the solutions used in patch-clamp experiments on isolated DUM neurons of *L. migratoria*.

	Extracellular solutions (ES, mM)		Intracellular solutions (IS, mM)				
	SES	lowNa <sup>+</sup> -ES	SIS	highCl <sup>-</sup> -IS	lowK <sup>+</sup> highCl <sup>-</sup> -IS	lowK <sup>+</sup> lowCl <sup>-</sup> -IS	
NaCl	172.5	40	NaCl	6.5	6.5	6.5	6.5
KCl	6.5	6.5	K gluconate	160	-	-	-
CaCl <sub>2</sub>	2	3	CaCl <sub>2</sub>	1	1	1	1
MgCl <sub>2</sub>	7.7	7	MgCl <sub>2</sub>	-	-	-	-
HEPES	10	10	Mg ATP	2	2	2	2
choline Cl	-	90	EGTA	10	5	5	5
CdCl <sub>2</sub>	-	2	HEPES	10	10	10	10
tetraethylammoniumCl	-	25	CsCl	-	-	170	75
4-aminoperidine	-	5	KCl	-	160	-	-
tetrodotoxin	-	100 nM					
			*free [Ca <sup>2+</sup> ]	0.2 μM	0.2 μM	0.2 μM	0.2 μM
pH	6.8	6.8	pH	6.65	6.65	6.65	6.65
osmolality	380	380	osmolality	380	380	380	380

The free Ca<sup>2+</sup> concentrations of the intracellular solutions were calculated for given concentrations of Ca<sup>2+</sup>, Mg<sup>2+</sup> and chelators using the freeware Sliders v. 2.10, WinMAXC v.2.10 (both available at <http://www.stanford.edu/~cpatton>) and CaBuf (at <ftp://ftp.cc.KuLeuven.ac.be/pub/droogmans>).



Figure 1

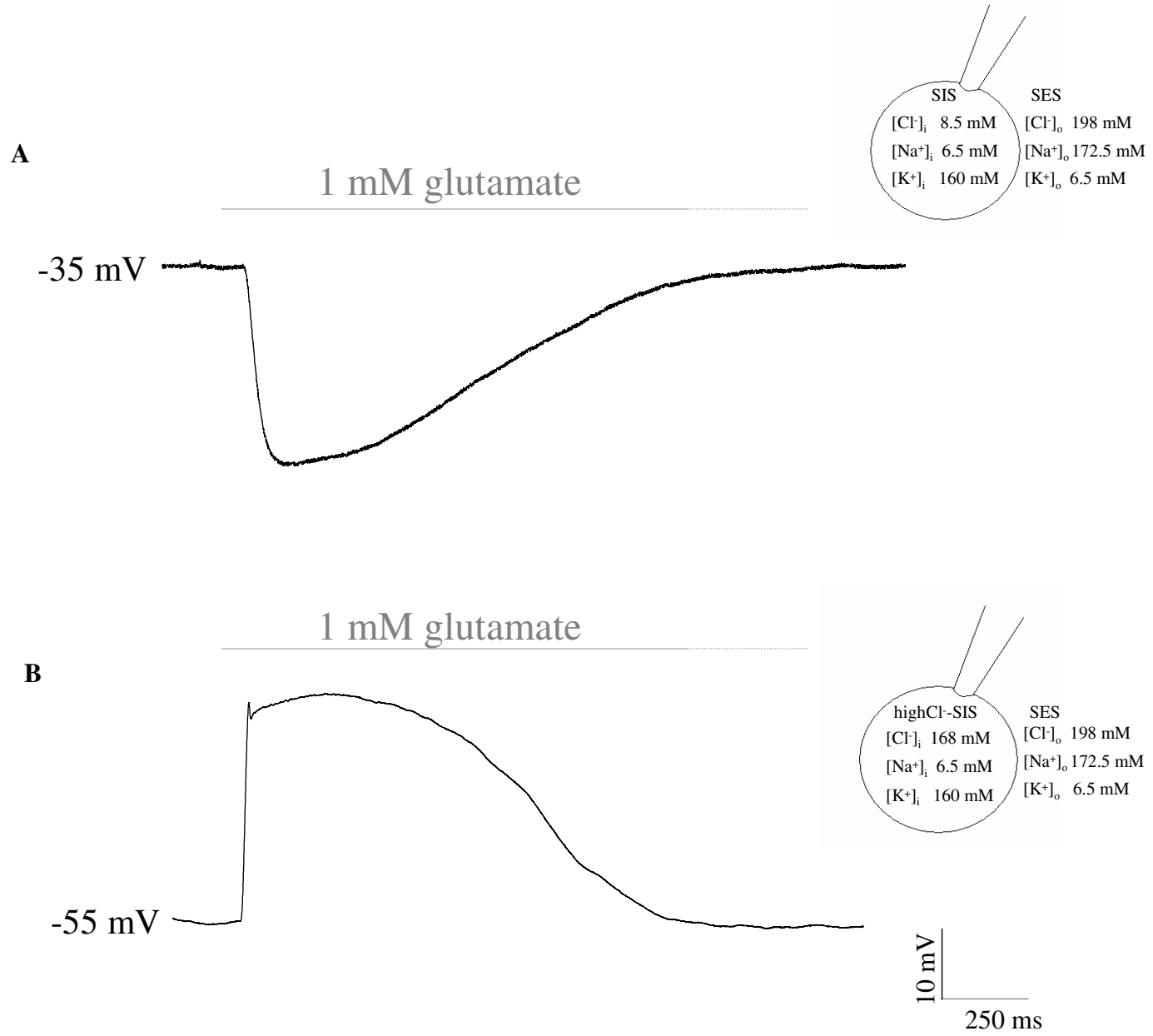


Figure 2

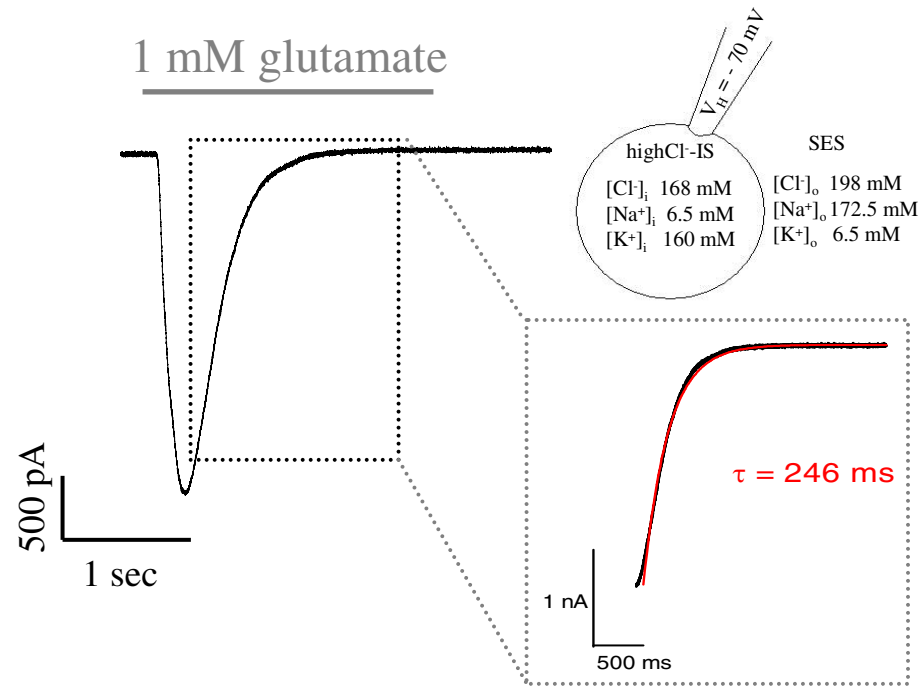


Figure 3

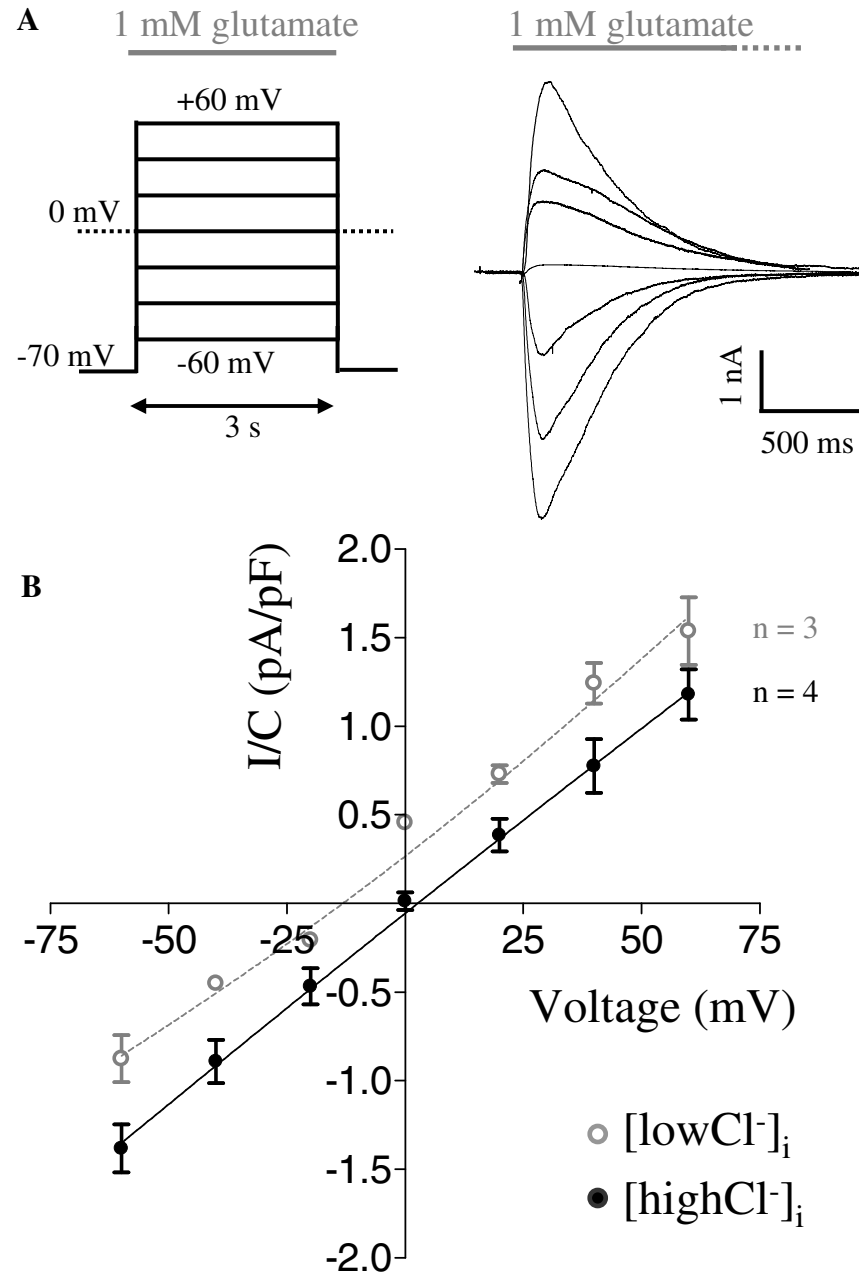


Figure 4

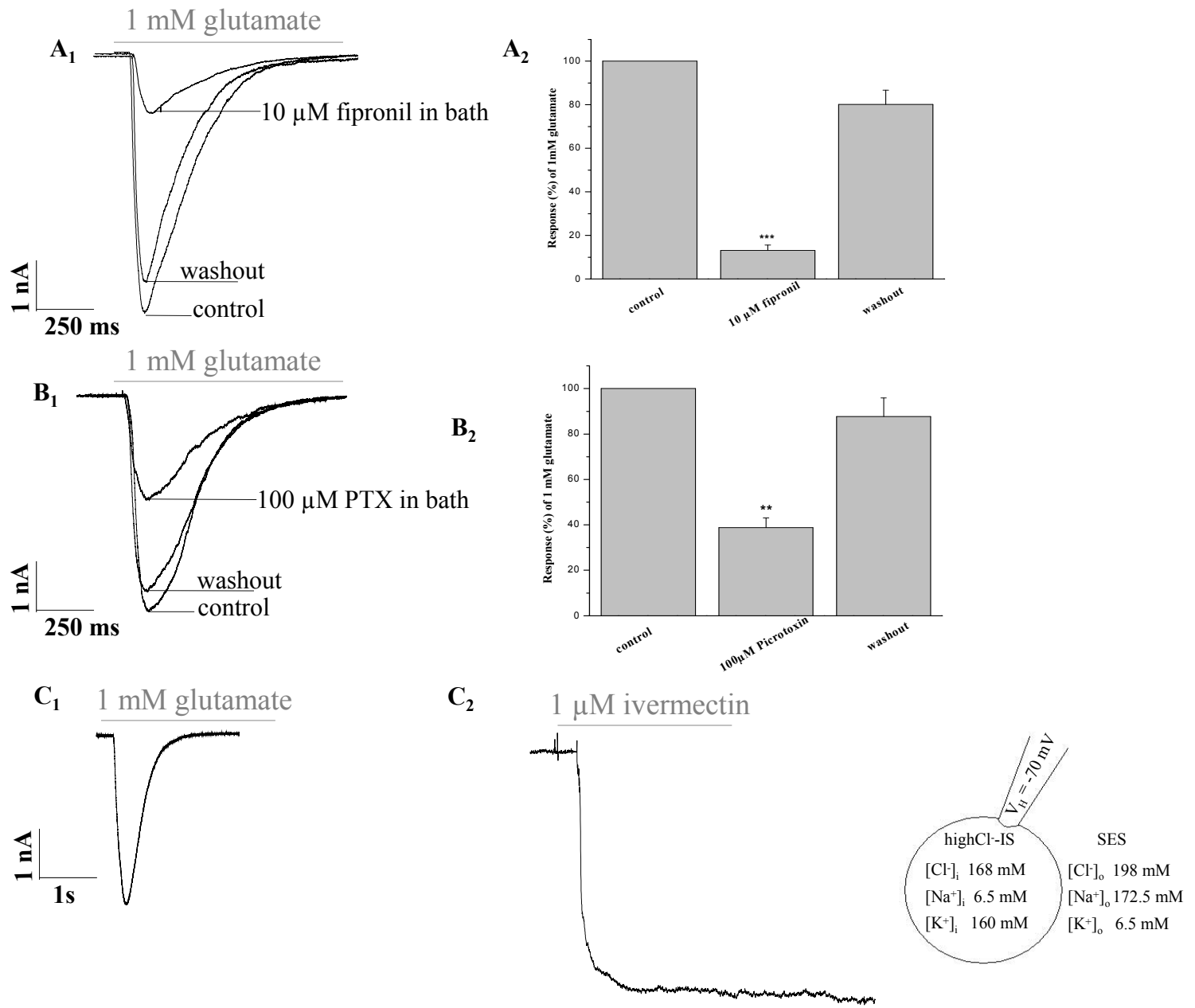
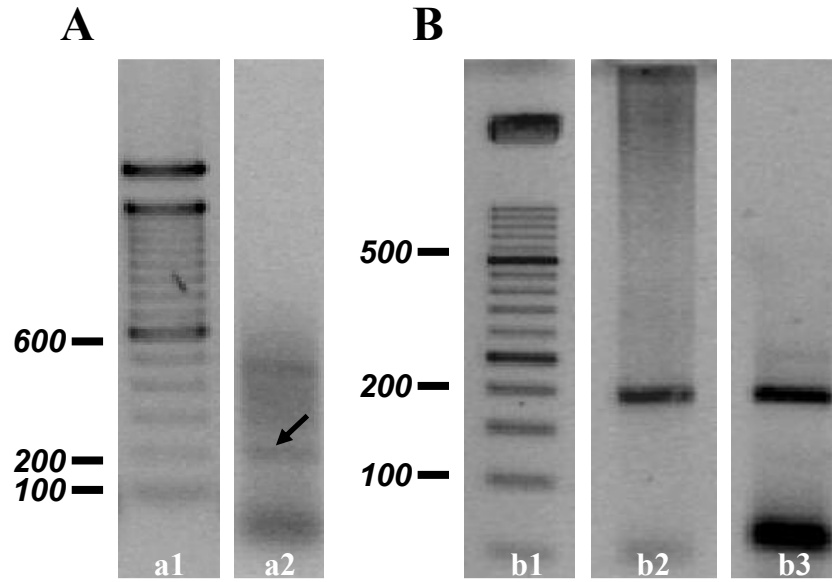


Figure 6.



TGACGGCCGCGGGCAGGGACTCACACCACGACCTGAGAATACATGGGCGCTCCTAACCG  
\*  
TTCTCAGGCAGTACC**ATG**GCCACTGTGGCCTCGTCGCTGTGGCCACCCTGTGTCTTGCTA  
M A T V A S S L W P P C V L L  
CTCGTGCTACTGGTGCATGTGGGCTGGTGCAATCAGCCGAAAGTGAACCTCAGGGAGAAG  
L V L L V H V G W C N Q P K V N F R E K  
GAGAAGCAGGTTCTGGATCAGATTCTGGGTCCCGCCGCTACGACGCGAGGATCCGTCCC  
E K Q V L D Q I L G P G R Y D A R I R P  
TCTGGAATCAACGGCACAACGGACGCACCCGACATTTGTCACTGTCAACATCTTCTTCCG  
S G I N G T T D A P T F V T V N I F L R  
TCAATCAGCAAATAGACGATTACAAAATGGAATACAGTGTCCAGCTTACATTCCGAGAA  
S I S K I D D Y K M E Y S V Q L T F R E  
CAGTGGATGGACGAGAGACTCAAATTCAACGATGTTGGAGGTAAAATCAAGTACCTTACC  
Q W M D E R L K F N D V G G K I K Y L T  
CTCACAGACGCCAACAGGGTATGGATGCCAGATTTGTTCTTCGCCAATGAGAAGGAAGGT  
L T D A N R V W M P D L F F A N E K E G  
CACTTTTCATAACATCATTATGCCCAACGTGTACATTAGAATTTTCCCATATGGTTTCAGTA  
H F H N I I M P N V Y I R I F P Y G S V  
CTGTACAGTATTCGAATCTCGCTGACGTTGGCATGCCCGATGAATTTGAAGCTGTATCCA  
L Y S I R I S L T L A C P M N L K L Y P  
CTGGATCGTCAGGTTTGTCACTAAGGATGGCAAGCTACGGGTGGACCACTGCCGACCTC  
L D R Q V **C** S L R M A S Y G W T T A D L  
GTTTTCTCTGGAAGGAAGGCGACCCCGTGCAGGTGGTCAAGAATCTACACTTACCACGT  
V F L W K E G D P V Q V V K N L H L P R  
TTTACATTGGAAAAATTTCTTACAGATTATTGTAATAGCAAGACCAACACGGGAGAGTAC  
F T L E K F L T D Y **C** N S K T N T G E Y  
AGCTGCCTGAAGGTCGACCTGCTCTTCAAGCGGGAGTTCAGCTACTACCTGATCCAGATC  
S **C** L K V D L L F K R E F S Y Y L I Q I  
TACATCCCCTGCTGTATGCTGGTCATTGTGTCGTGGGTCTCCTTCTGGCTCGATCAGGGT  
Y I P C C M L V I V S W V S F W L D Q G  
GCCGTTCCCGCACGAGTGTCCCTCGGAGTCACCACGCTCCTTACTATGGCCACCCAAACC  
A V P A R V S L G V T T L L T M A T Q T  
TCGGGAATCAACGCCTCACTCCCGCCTGTATCCTACACTAAGGCCATCGACGTTTGGACC  
S G I N A S L P P V S Y T K A I D V W T  
GGCGTCTGCCTAACGTTTGTGTTTCGGCGCACTGCTAGAGTTTCGCGTTAGTCAACTATGCG  
G V C L T F V F G A L L E F A L V N Y A  
TCAAGATCCGATATGCACCGAGAAAACATGAAGAAACAGAGGCGGCAATGTGAGTTGGAG  
S R S D M H R E N M K K Q R R Q C E L E  
CACGCAGCCAGCTTGGAGGCCGCTGCCGACCTTCTCGAGGACGGTGCCACCACCTTCGCC  
H A A S L E A A A D L L E D G A T T F A  
ATGAAGCCGCTGGTCCGACATCCGGGAGACGCCCTGACGCTGGAGAAGGTGCGCCAGTGC  
M K P L V R H P G D A L T L E K V R Q C  
GAGATCCACATGCAGCCCAAGAGGGAGAAGTGTGCTGCCGACCTGGCTGTCCAAATTCCCC  
E I H M Q P K R E N C C R T W L S K F P  
ACCAGGAGCAAGAGGATCGACGTCATCTCGCGCATAACCTTCCCGCTGGTTTTTGCACCT  
T R S K R I D V I S R I T F P L V F A L  
TTCAACCTGGTCTACTGGTGCACCTACCTGTTCCGCGAGGAGGCAGAAGACAAC**TGA**ACT  
F N L V Y W S T Y L F R E E A E D N \*  
GTGCTGTGTTATATCAGAAGCAATACGGTGGTCTTGCTCAAGACACGGTGGTGTAGCTGT  
TAGATTGTATAGCACCACGAAGGAAACAATCACCTCTCTTTAGCGATACGAGTGCACCTT  
GTAATTATCATAACATACGCCAACAAAGCGTGGACAGCGGAGGTGGATTGTTAATGACGAGG